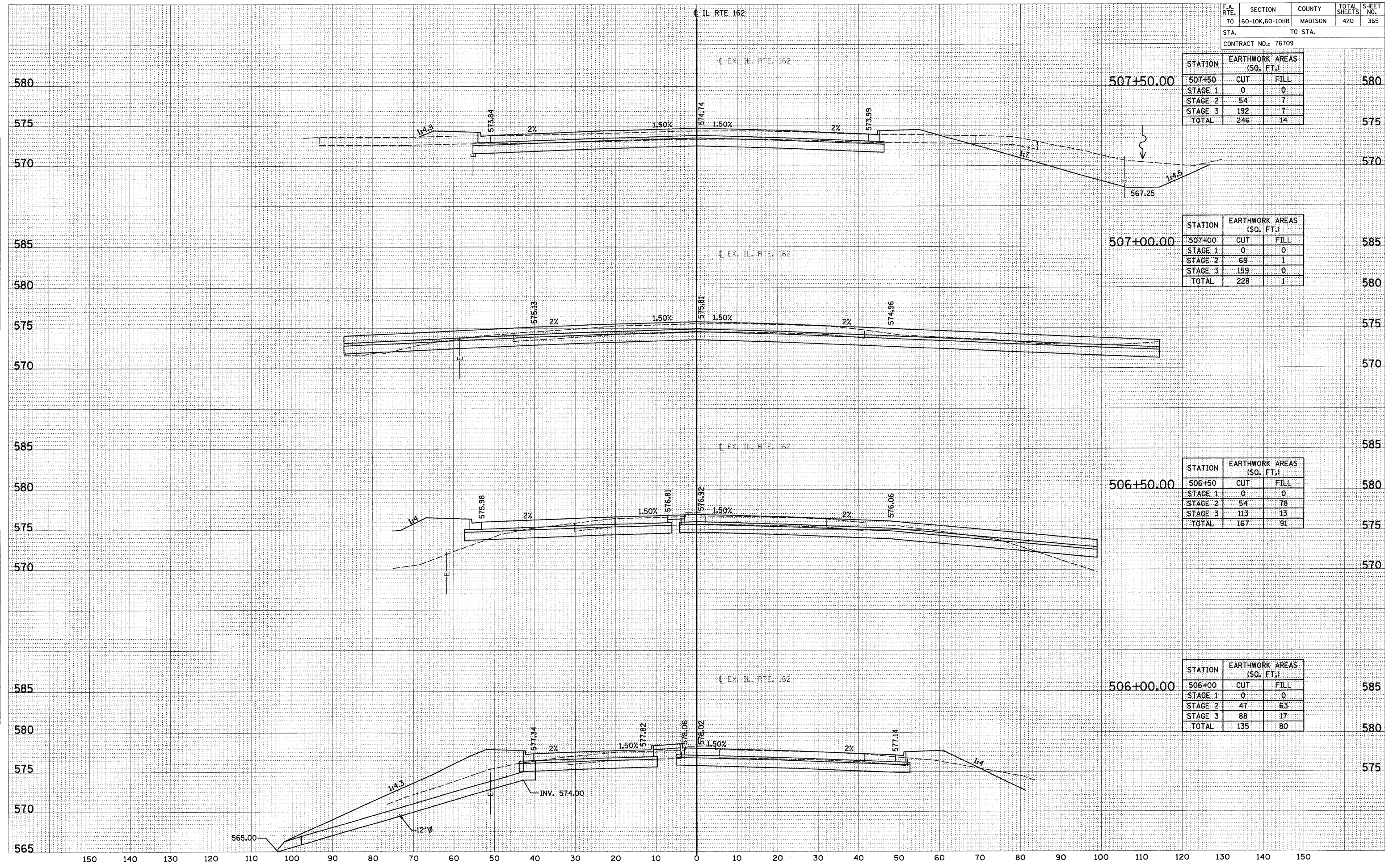


STATION	EARTHWORK AREAS (SQ. FT.)		
	CUT	FILL	
507+50	0	0	580
STAGE 1	0	0	
STAGE 2	54	7	
STAGE 3	192	7	
TOTAL	246	14	575

STATION	EARTHWORK AREAS (SQ. FT.)		
	CUT	FILL	
507+00	0	0	585
STAGE 1	0	0	
STAGE 2	69	1	
STAGE 3	159	0	
TOTAL	228	1	580

STATION	EARTHWORK AREAS (SQ. FT.)		
	CUT	FILL	
506+50	0	0	580
STAGE 1	0	0	
STAGE 2	54	78	
STAGE 3	113	13	
TOTAL	167	91	575

STATION	EARTHWORK AREAS (SQ. FT.)		
	CUT	FILL	
506+00	0	0	585
STAGE 1	0	0	
STAGE 2	47	63	
STAGE 3	88	17	
TOTAL	135	80	580



DATE _____ BY _____
 SURVEYED _____ PLOTTED _____
 FINAL SURVEY _____ NOTE BOOK _____
 NO. _____ AREAS CHECKED _____

DATE _____ BY _____
 SURVEYED _____ PLOTTED _____
 ORIGINAL SURVEY _____ NOTE BOOK _____
 NO. _____ AREAS CHECKED _____