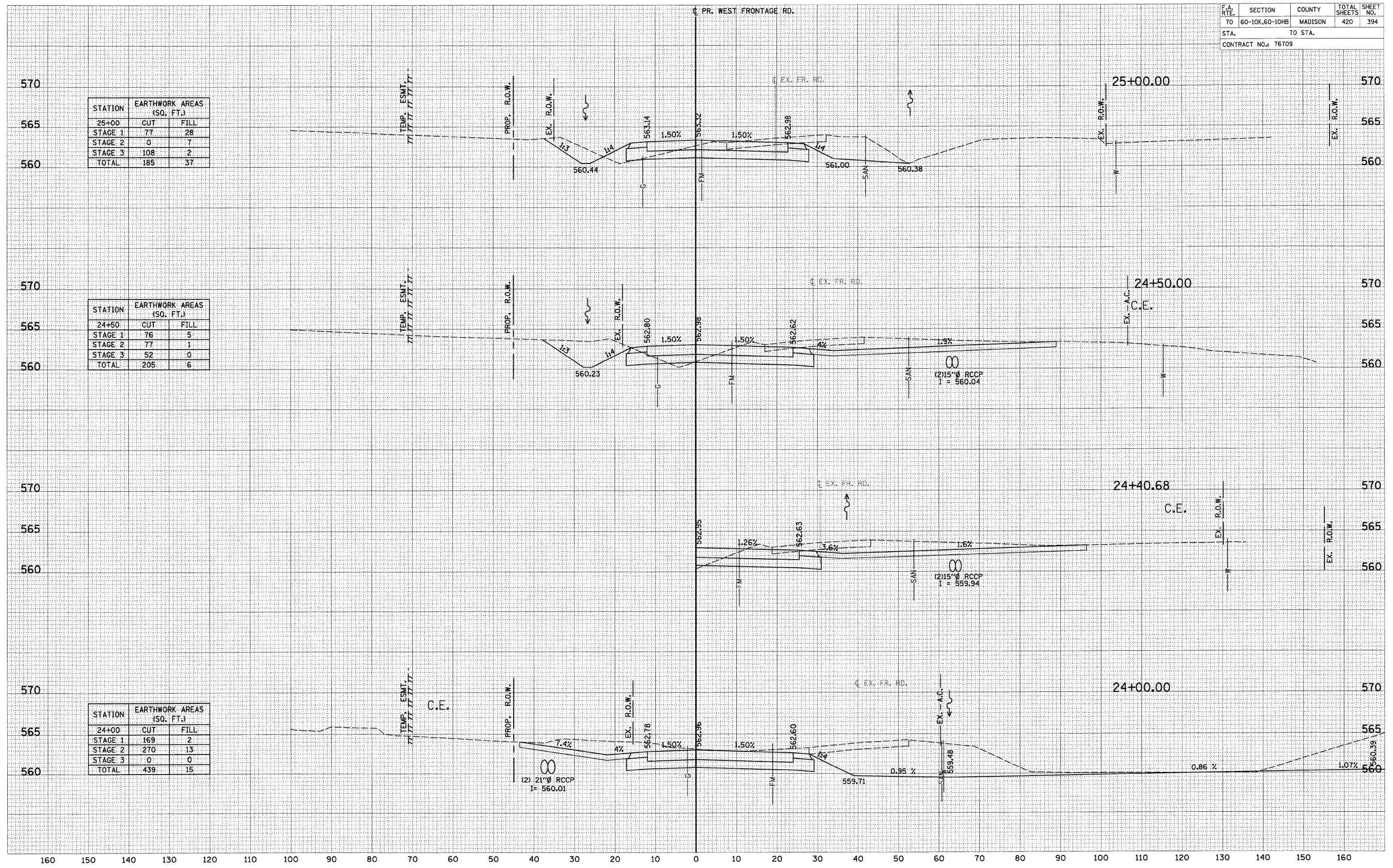


STATION	EARTHWORK AREAS (SQ. FT.)	
	CUT	FILL
25+00		
STAGE 1	77	28
STAGE 2	0	7
STAGE 3	108	2
TOTAL	185	37

STATION	EARTHWORK AREAS (SQ. FT.)	
	CUT	FILL
24+50		
STAGE 1	76	5
STAGE 2	77	1
STAGE 3	52	0
TOTAL	205	6

STATION	EARTHWORK AREAS (SQ. FT.)	
	CUT	FILL
24+00		
STAGE 1	169	2
STAGE 2	270	13
STAGE 3	0	0
TOTAL	439	15



ORIGINAL SURVEYED BY: _____ DATE: _____
 SURVEYED BY: _____ DATE: _____
 NOTE BOOK NO.: _____
 TEMPLATE AREAS CHECKED: _____
 AREAS CHECKED: _____