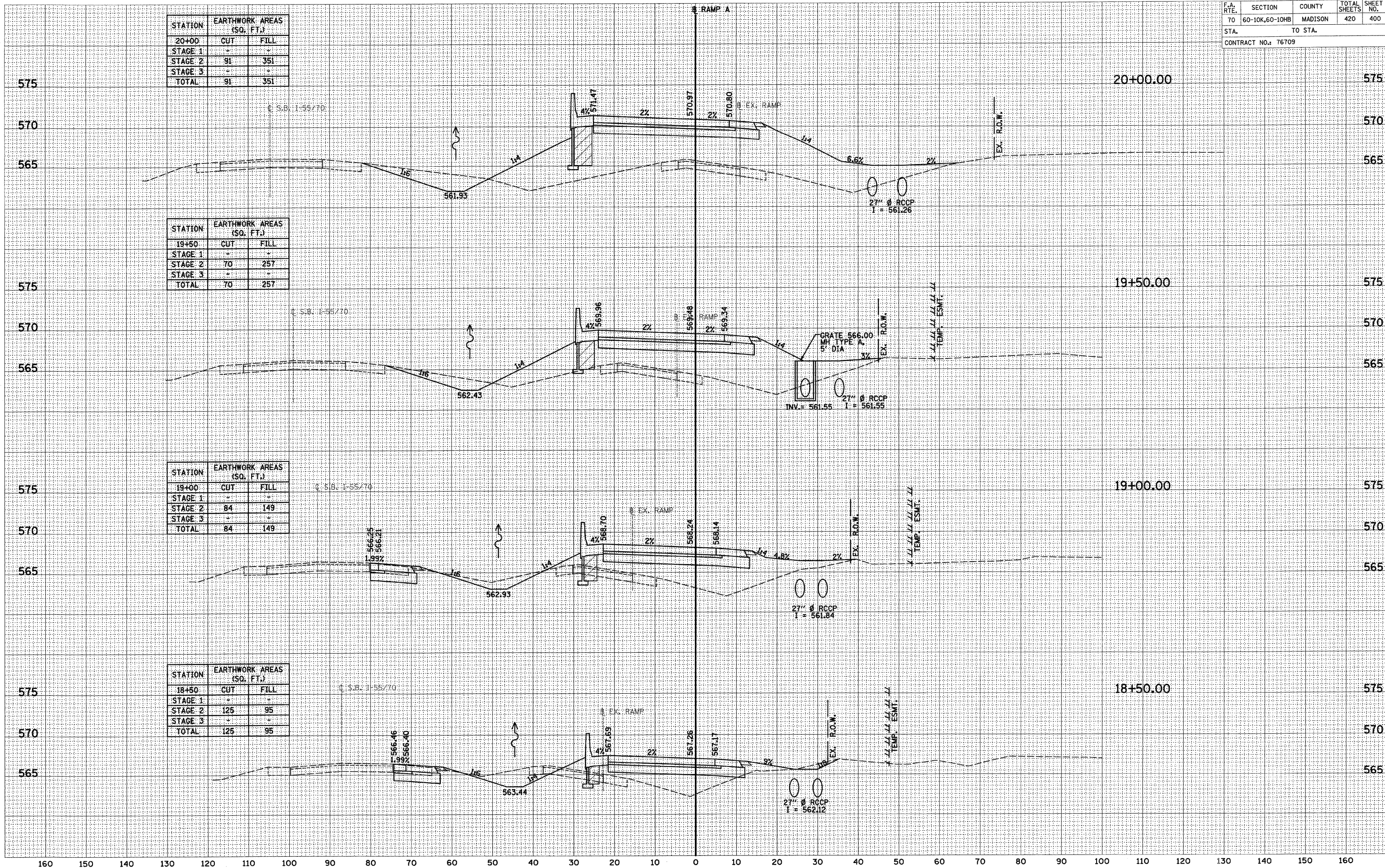


STATION	EARTHWORK AREAS (SQ. FT.)	
	CUT	FILL
20+00	-	-
STAGE 1	-	-
STAGE 2	91	351
STAGE 3	-	-
TOTAL	91	351

STATION	EARTHWORK AREAS (SQ. FT.)	
	CUT	FILL
19+50	-	-
STAGE 1	-	-
STAGE 2	70	257
STAGE 3	-	-
TOTAL	70	257

STATION	EARTHWORK AREAS (SQ. FT.)	
	CUT	FILL
19+00	-	-
STAGE 1	-	-
STAGE 2	84	149
STAGE 3	-	-
TOTAL	84	149

STATION	EARTHWORK AREAS (SQ. FT.)	
	CUT	FILL
18+50	-	-
STAGE 1	-	-
STAGE 2	125	95
STAGE 3	-	-
TOTAL	125	95



DATE: _____
 BY: _____
 SURVEYED: _____
 PLOTTED: _____
 TEMPLATE: _____
 NOTE BOOK: _____
 AREAS CHECKED: _____
 NO. _____

DATE: _____
 BY: _____
 SURVEYED: _____
 PLOTTED: _____
 TEMPLATE: _____
 NOTE BOOK: _____
 AREAS CHECKED: _____
 NO. _____