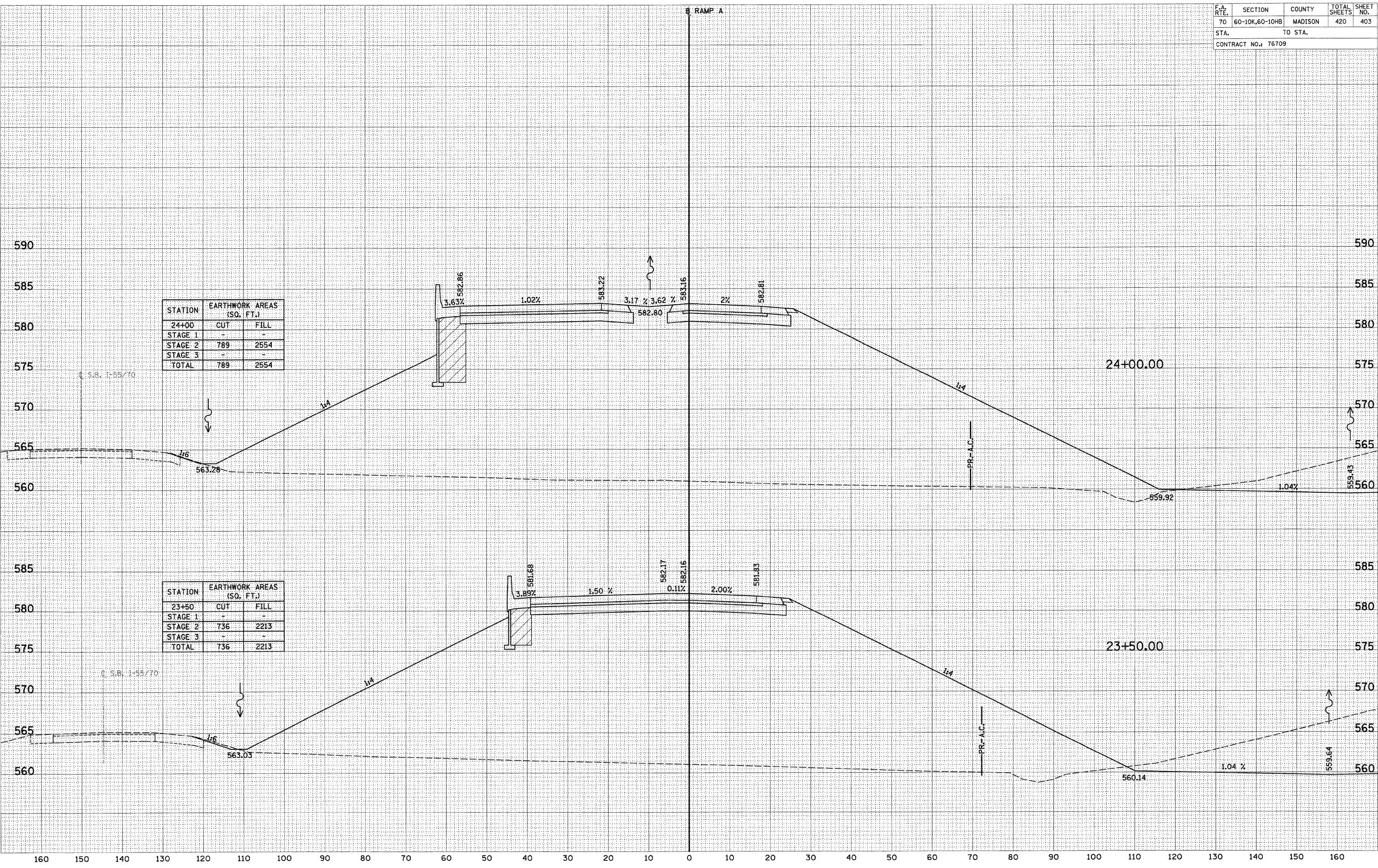


STATION	EARTHWORK AREAS (SQ. FT.)	
	CUT	FILL
24+00	-	-
STAGE 1	-	-
STAGE 2	789	2554
STAGE 3	-	-
TOTAL	789	2554

STATION	EARTHWORK AREAS (SQ. FT.)	
	CUT	FILL
23+50	-	-
STAGE 1	-	-
STAGE 2	736	2213
STAGE 3	-	-
TOTAL	736	2213



DATE _____
 BY _____
 SURVEYED _____
 CHECKED _____
 NOTE BOOK _____
 TEMPLATE _____
 AREAS CHECKED _____
 NO. _____

DATE _____
 BY _____
 SURVEYED _____
 CHECKED _____
 NOTE BOOK _____
 TEMPLATE _____
 AREAS CHECKED _____
 NO. _____