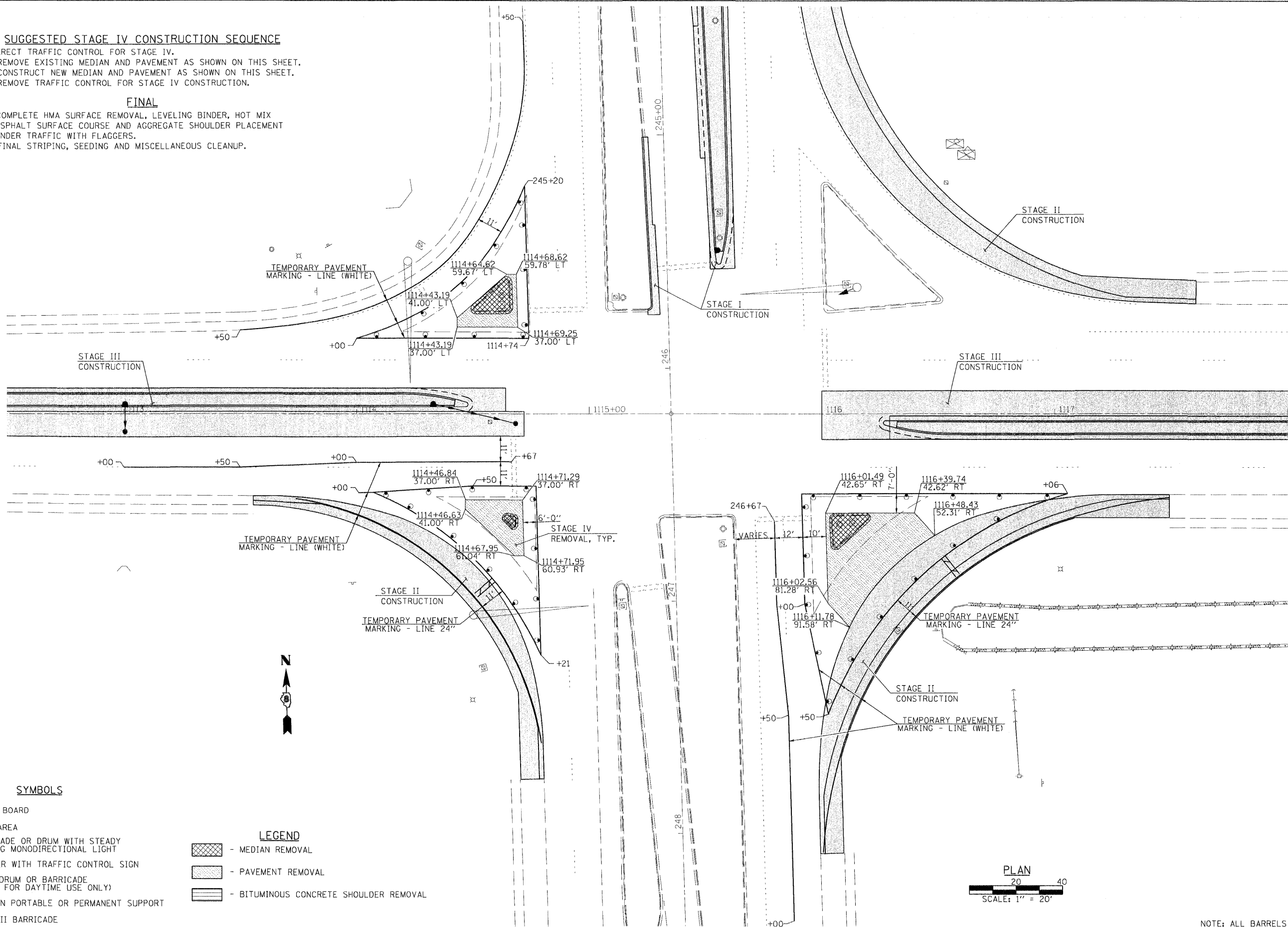


SUGGESTED STAGE IV CONSTRUCTION SEQUENCE

1. ERECT TRAFFIC CONTROL FOR STAGE IV.
2. REMOVE EXISTING MEDIAN AND PAVEMENT AS SHOWN ON THIS SHEET.
3. CONSTRUCT NEW MEDIAN AND PAVEMENT AS SHOWN ON THIS SHEET.
4. REMOVE TRAFFIC CONTROL FOR STAGE IV CONSTRUCTION.

FINAL

1. COMPLETE HMA SURFACE REMOVAL, LEVELING BINDER, HOT MIX ASPHALT SURFACE COURSE AND AGGREGATE SHOULDER PLACEMENT UNDER TRAFFIC WITH FLAGGERS.
2. FINAL STRIPING, SEEDING AND MISCELLANEOUS CLEANUP.

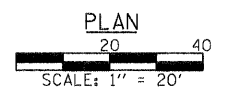


SYMBOLS

- ↑ ARROW BOARD
- ▨ WORK AREA
- BARRICADE OR DRUM WITH STEADY BURNING MONODIRECTIONAL LIGHT
- FLAGGER WITH TRAFFIC CONTROL SIGN
- CONE, DRUM OR BARRICADE (CONES FOR DAYTIME USE ONLY)
- ⊥ SIGN ON PORTABLE OR PERMANENT SUPPORT
- ⊥ TYPE III BARRICADE

LEGEND

- ▨ - MEDIAN REMOVAL
- ▨ - PAVEMENT REMOVAL
- ▨ - BITUMINOUS CONCRETE SHOULDER REMOVAL



NOTE: ALL BARRELS ARE AT 20' O.C.

FILE NAME =	USER NAME = #USER#	DESIGNED -	REVISED -	Allen Henderson & Associates, Inc. Civil and Structural Engineers Springfield, IL 62703 Phone: (217)544-8033 IL Design Firm No. 184-001907	STAGE IV TRAFFIC CONTROL	F.A.P. RTE.	SECTION	COUNTY	TOTAL SHEETS	SHEET NO.	
#FILE#		DRAWN -	REVISED -		SCALE: 1" = 20'	SHEET NO. 20 OF 58 SHEETS	674	410-1-N	ST. CLAIR	58	22
		CHECKED -	REVISED -		STA.	TO STA.	CONTRACT NO. 76C63				
		DATE -	REVISED -		FED. ROAD DIST. NO. ILLINOIS FED. AID PROJECT						