



Illinois Department of Transportation
Division of Highways
Illinois Department of Transportation

SOIL BORING LOG

Page 1 of 1

Date 8/5/95

ROUTE FAP 674 DESCRIPTION Traffic Signals at IL 158 and Seibert Road LOGGED BY Larry Ford

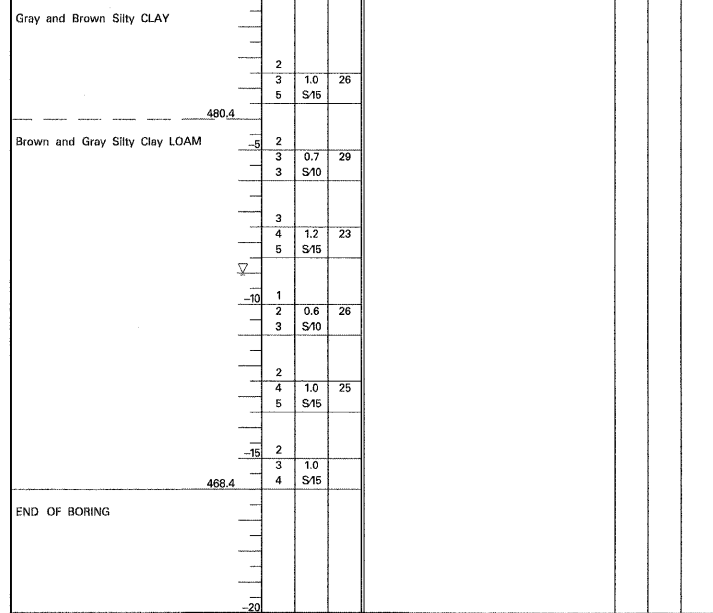
SECTION 410-1-N LOCATION SW 14, NE 14, SEC. 9, TWP. 1N, RNG. 7W, 3 PM

COUNTY St. Clair DRILLING METHOD Hollow Stem Auger HAMMER TYPE 140# Automatic

STRUCT. NO. NA Station NA
BORING NO. B-4 Station 114+51
Offset 90.00ft Right
Ground Surface Elev. 484.4 ft

DEPTH (ft)	SOIL TYPE	UCS (tsf)	MOISTURE (%)
2			
3	1.0	26	
5	S15		
8			
9			
10			
11			
12			
13			
14			
15			
16			
17			
18			
19			
20			

Surface Water Elev. _____ ft
Stream Bed Elev. _____ ft
Groundwater Elev.:
First Encounter _____ ft
Upon Completion 475.4 ft
After _____ Hrs. _____ ft



The Unconfined Compressive Strength (UCS) Failure Mode is indicated by (B-Bulge, S-Shear, P-Penetrometer)
The SPT (N value) is the sum of the last two blow values in each sampling zone (AASHTO T208)
BBS, from 137 (Rev. 8-99)