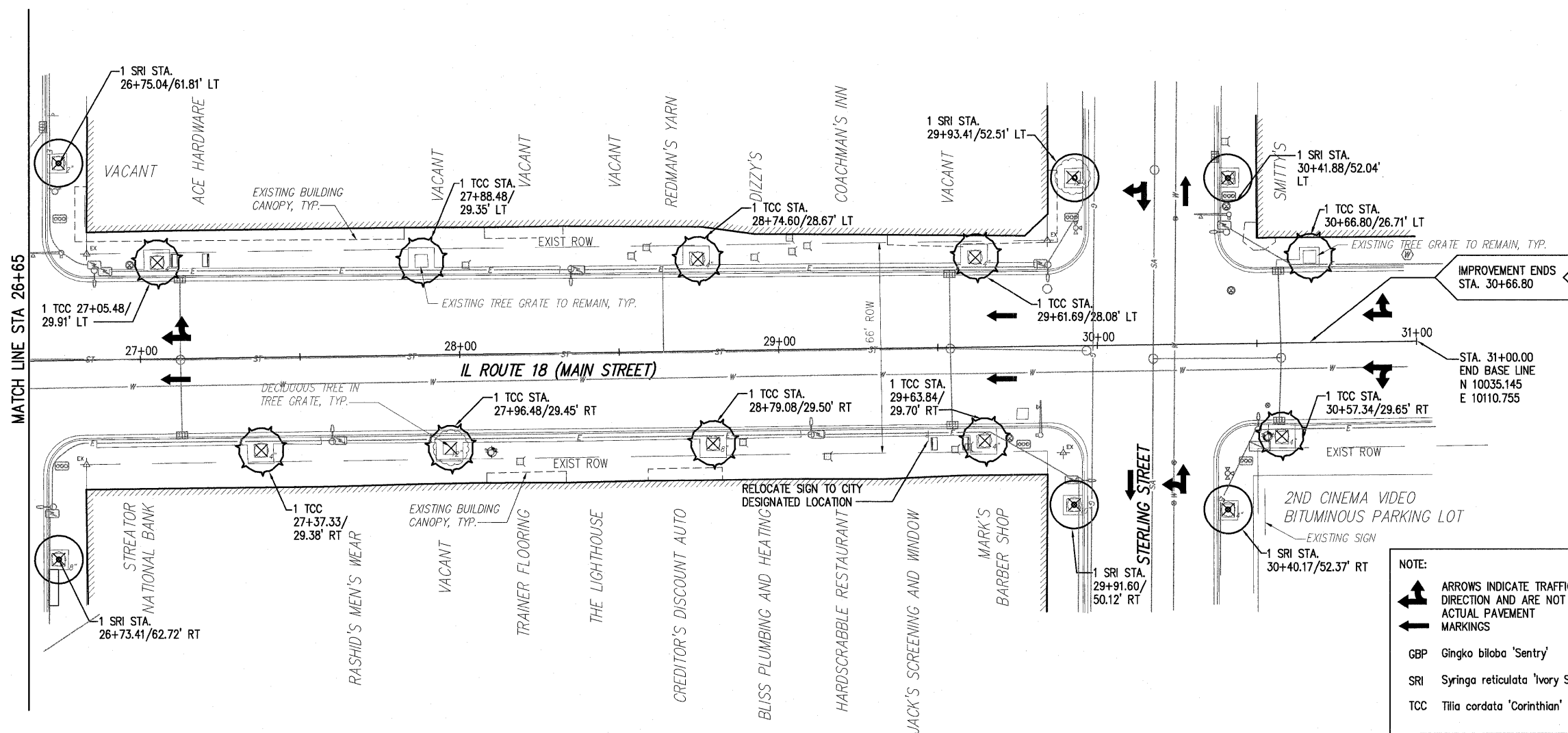
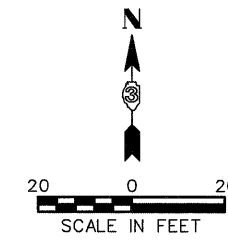


SECTION 24, TOWNSHIP 31 N, RANGE 03 E



SECTION 36, TOWNSHIP 31 N, RANGE 03 E

NOTE:
 ARROWS INDICATE TRAFFIC DIRECTION AND ARE NOT ACTUAL PAVEMENT MARKINGS
 GBP Ginkgo biloba 'Sentry'
 SRI Syringa reticulata 'Ivory Silk'
 TCC Tilia cordata 'Corinthian'



p:\2007\0070058500-Stratcor II, Route 18 Streetscape Design\Phase 2\Draw

FILE NAME = \$FILEL\$	USER NAME = \$USERS\$	DESIGNED -- BRD	REVISED -- 03/27/09	STATE OF ILLINOIS DEPARTMENT OF TRANSPORTATION	STREETScape IMPROVEMENT PLAN	F.A.P. RTE. 653	SECTION 06-00085-00-LT	COUNTY LaSALLE	TOTAL SHEETS 10	SHEET NO. 08	
PLOT SCALE = \$SCALE\$	DRAWN -- STH	CHECKED -- BAB	REVISED --			SCALE: 1" = 20'	SHEET NO. 08 OF 10 SHEETS	STA. 26+65.00 TO STA. 31+00.00	CONTRACT NO. 87334		
PLOT DATE = \$DATE\$	DATE -- 02/27/09	REVISED --	REVISED --			FED. ROAD DIST. NO. ILLINOIS FED. AID PROJECT					
7707 NORTH KNOXVILLE AVENUE, PEORIA, ILLINOIS 61614 (309)689-9888 / (309)689-9820 FAX www.f-w.com											