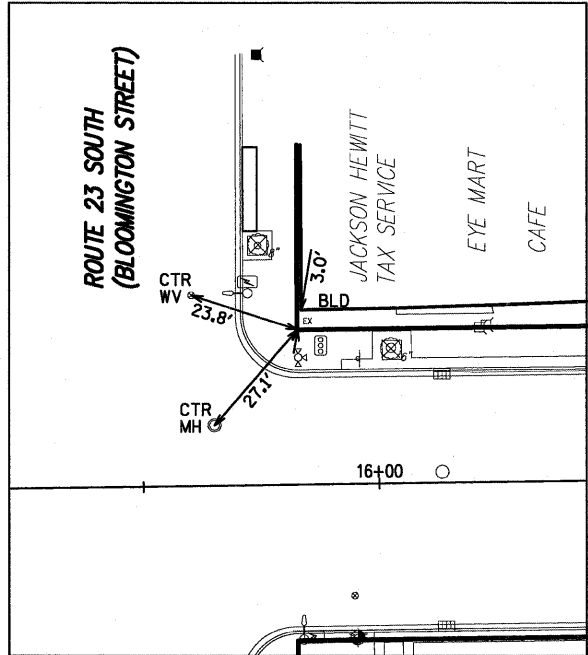
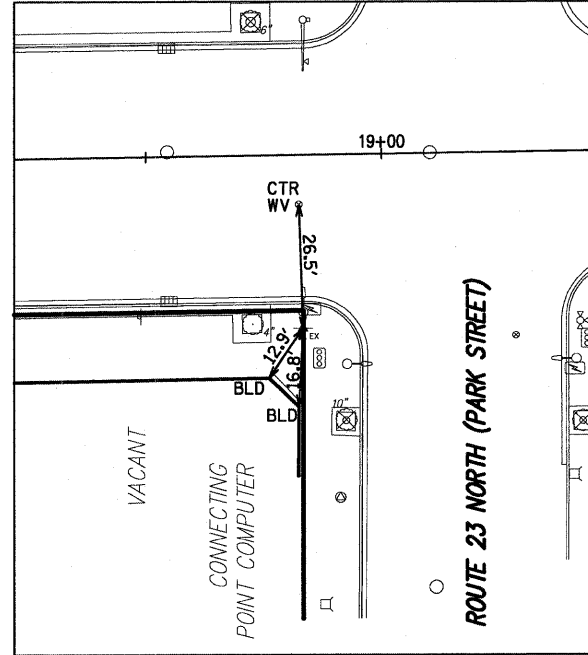


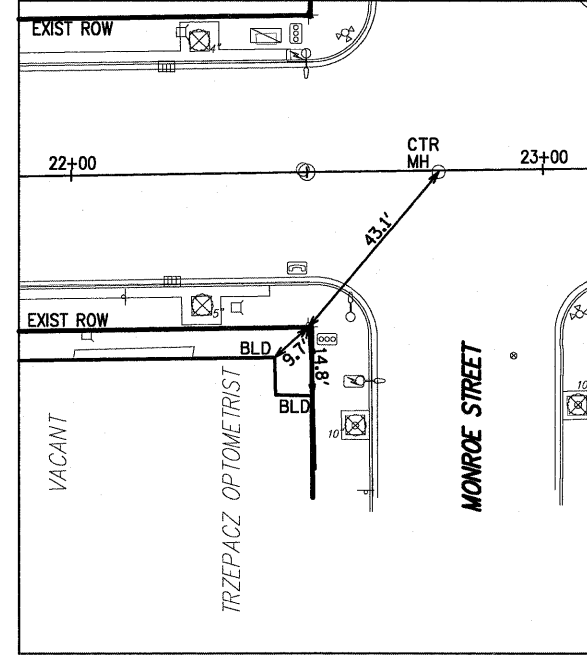
CONTROL TIE #12  
 CHISELED X  
 STA. 10+25.33/18.89' RT  
 N 9987.988  
 E 8036.539



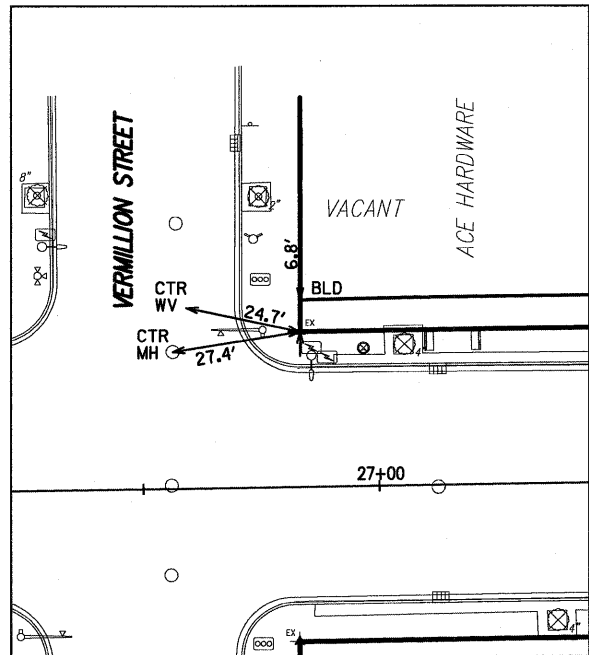
CONTROL TIE #10  
 CHISELED X  
 STA. 15+83.15/33.05' LT  
 N 10047.527  
 E 8593.593



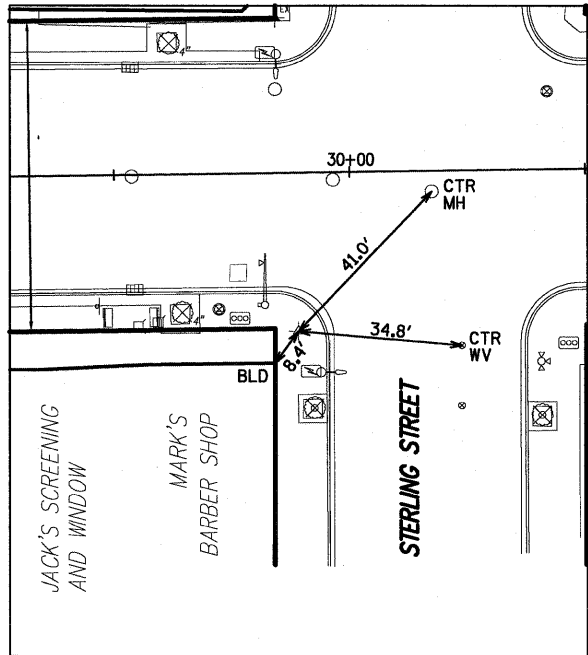
CONTROL TIE #7  
 CHISELED X  
 STA. 18+82.93/36.90' RT  
 N 9981.665  
 E 8894.302



CONTROL TIE #5  
 CHISELED X  
 STA. 22+49.84/32.97' RT  
 N 9990.598  
 E 9261.126



CONTROL TIE #3  
 CHISELED X  
 STA. 26+83.61/33.00' LT  
 N 10062.470  
 E 9693.957



CONTROL TIE #1  
 PK NAIL  
 STA. 29+88.78/33.63' RT  
 N 10000.000  
 E 10000.000

IMPROVEMENT BEGINS  
 COORDINATES  
 STA. 12+54.30/26.27' LT  
 N 10035.753  
 E 8264.856

IMPROVEMENT ENDS  
 COORDINATES  
 STA. 30+66.80/26.91' RT  
 N 10061.598  
 E 10077.362

D:\2007\007005800-Streetor IL Route 18 Streetscape Design\Phase 2.DGN

FILE NAME =	USER NAME = #USER#	DESIGNED - BRD	REVISED - 03/27/09	<b>STATE OF ILLINOIS DEPARTMENT OF TRANSPORTATION</b>	<b>CONTROL AND SURVEY TIES</b>			F.A.P. RTE.	SECTION	COUNTY	TOTAL SHEETS	SHEET NO.
#FILEL#		DRAWN - AJD	REVISED -		SCALE:	SHEET NO. 9 OF 10 SHEETS	STA. 12+54.30 TO STA. 30+66.80	653	06-00085-00-LT	LOGSALLE	10	9
		CHECKED - BAB	REVISED -					<b>CONTRACT NO. 87334</b>				
		DATE - 02/27/09	REVISED -		FED. ROAD DIST. NO. [ILLINOIS] FED. AID PROJECT							