

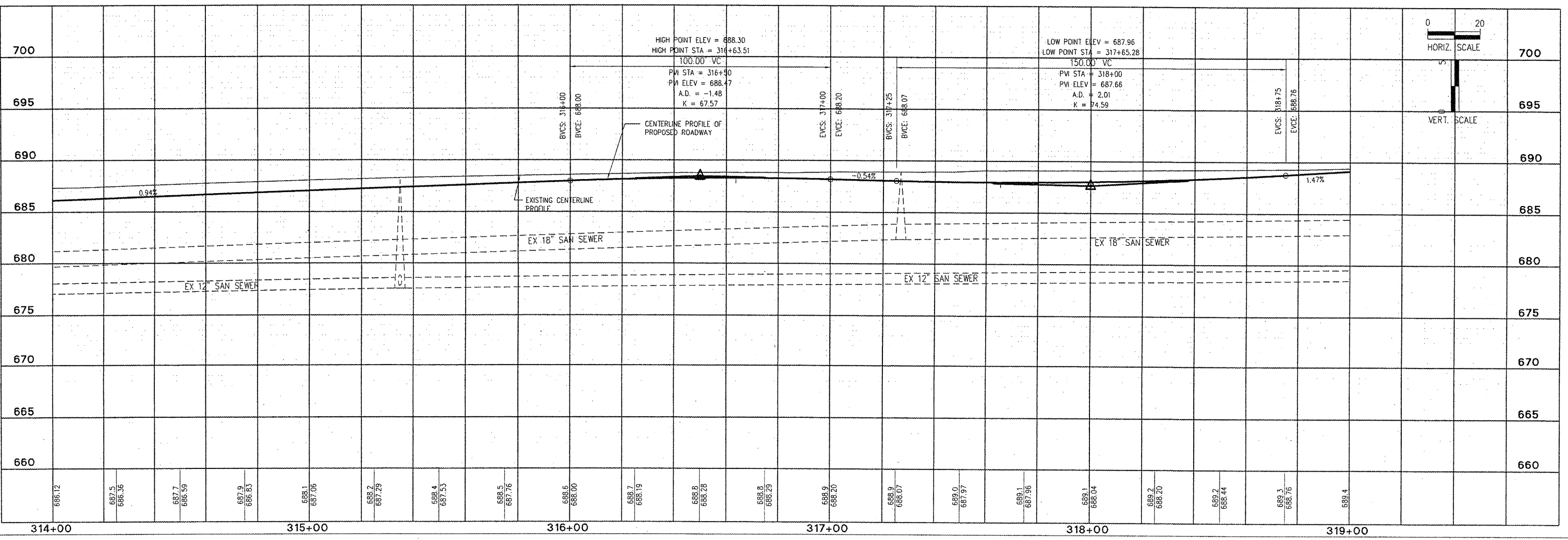
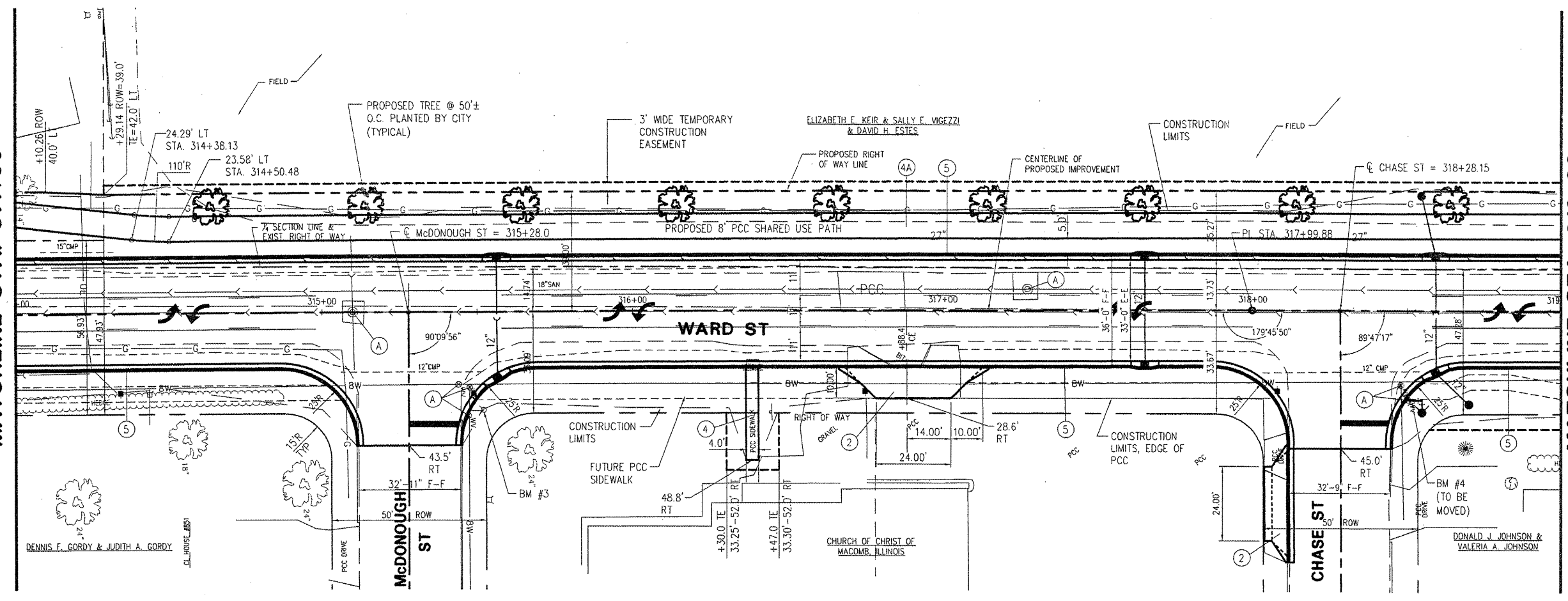
- ITEM LEGEND**
- ① PCC DRIVEWAY PAVEMENT, 6"
 - ② PCC DRIVEWAY PAVEMENT, 7"
 - ③ AGGREGATE SURFACE COURSE, TYPE A, 6"
 - ④ PCC SIDEWALK, 4"
 - ④A PCC SIDEWALK 5"
 - ⑤ COMB. CONC. CURB & GUTTER, TYPE B6.18
 - ⑥ CONCRETE CURB, TYPE B, 6"
 - ⑦ SIDEWALK RAMP W/ DETECTABLE WARNING
 - ⑧ AGGREGATE SURFACE COURSE, TYPE A, 8"
 - Ⓐ MANHOLE, VALVE BOX, WATER SERVICE BOX OR METER VAULT TO BE ADJUSTED

McClure Engineering Associates, Inc.
 Macomb, Illinois 61455
 714 East Jackson Street
 (609) 833-4900
 FAX (609) 831-4909
 Design firm License #008016 Copyright 2008 by McClure Engineering Associates, Inc.

PLOTTING SCALE: 1" = 20'	DATE:
DRAWN BY: TAB/APS	CHECKED BY: ECM
	DATE: OCTOBER 2008

MATCHLINE STA. 314+00

MATCHLINE STA. 319+00



NO.	REVISIONS	DATE

WARD STREET IMPROVEMENTS
PLAN AND PROFILE - STA. 314+00 TO 319+00
 CITY OF MACOMB

SOUTH WARD ST.
 FILE NAME: W:\DRAWINGS\MACOMB\WARDST\WARD-51-2007 FIELD BOOK No. 2237 JOB NUMBER: 03-26-08098