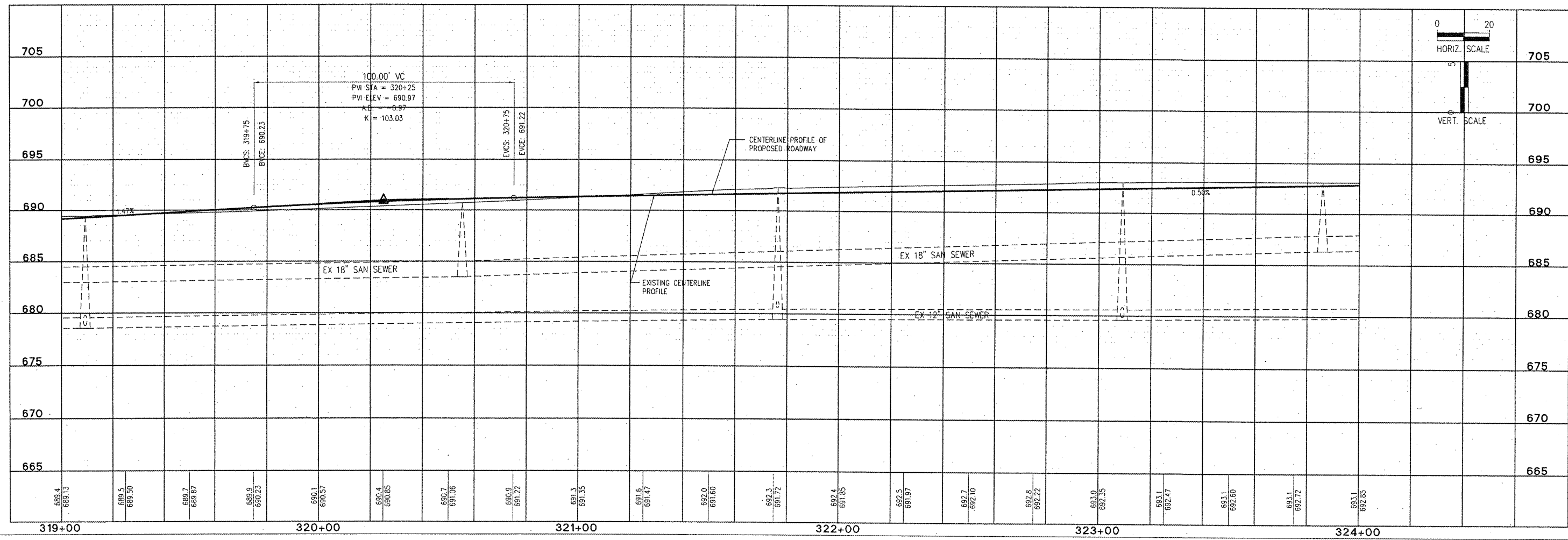
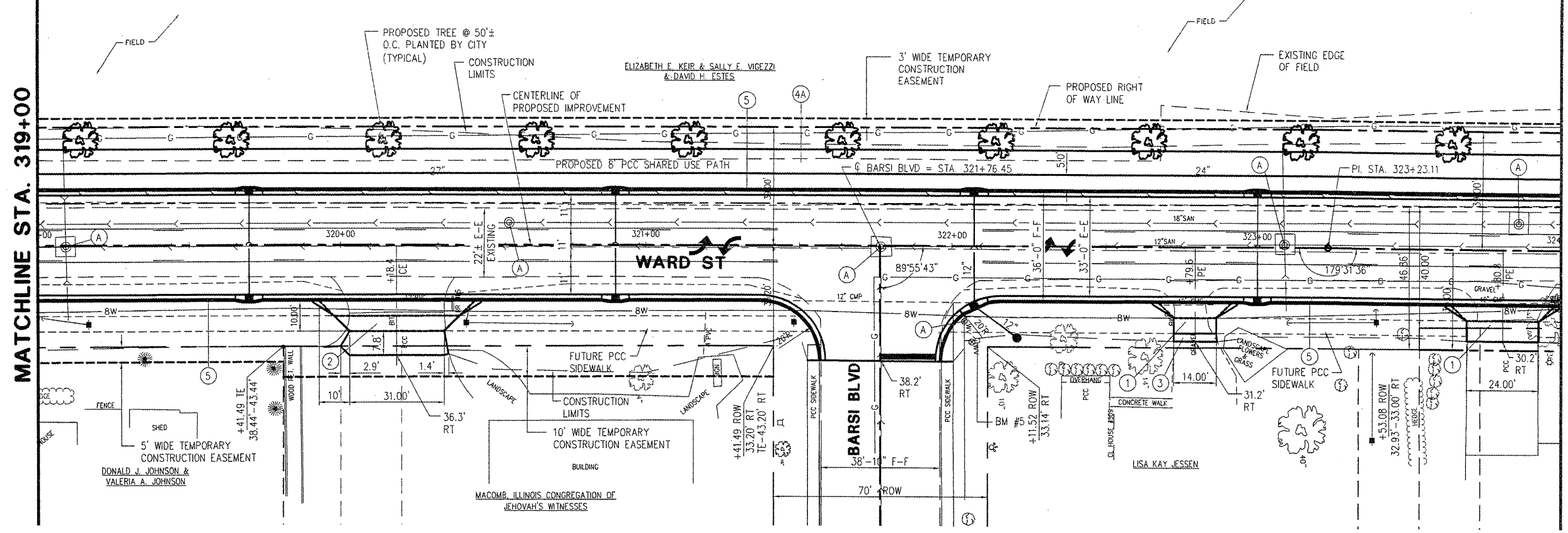


- ITEM LEGEND**
- ① PCC DRIVEWAY PAVEMENT, 6"
 - ② PCC DRIVEWAY PAVEMENT, 7"
 - ③ AGGREGATE SURFACE COURSE, TYPE A, 6"
 - ④ PCC SIDEWALK, 4"
 - ④A PCC SIDEWALK 5"
 - ⑤ COMB. CONC. CURB & GUTTER, TYPE B6.18
 - ⑥ CONCRETE CURB, TYPE B, 6"
 - ⑦ SIDEWALK RAMP W/ DETECTABLE WARNING
 - ⑧ AGGREGATE SURFACE COURSE, TYPE A, 8"
 - Ⓐ MANHOLE, VALVE BOX, WATER SERVICE BOX OR METER VAULT TO BE ADJUSTED

McClure Engineering Associates, Inc.
 Macomb, Illinois 61455
 714 East Jackson Street
 (509) 831-8300 FAX (509) 837-8809
 Design firm License #184-000816 Copyright 2008 by McClure Engineering Associates, Inc.

MATCHLINE STA. 319+00

MATCHLINE STA. 324+00



Plotting Scale: 1" = 20'

Drawn By:	TAB/APS
Checked By:	ECM
Date:	OCTOBER 2008

NO.	REVISIONS	DATE

WARD STREET IMPROVEMENTS
PLAN AND PROFILE - STA. 319+00 TO 324+00
 CITY OF MACOMB

SOUTH WARD ST.
 FILE NAME: W:\DRAWINGS\MACOMB\WARDST\WARD-ST-2007 FIELD BOOK No. 2257 JOB NUMBER: 03-26-08058
 MACOMB, ILLINOIS