

MATCHLINE STA. 324+00

- STORM INL-24**  
MANHOLE SPECIAL TYPE 1  
STA. 324+10, 18.5' LT  
EP=692.64  
IE=688.76(E)  
IE=688.46(N)  
IE=688.36(S)
- STORM INL-22**  
MANHOLE SPECIAL TYPE 1  
STA. 325+20, 18.5' LT  
EP=693.19  
IE=689.30(E)  
IE=689.02(N)  
IE=688.92(S)
- STORM INL-20**  
MANHOLE SPECIAL TYPE 1  
STA. 326+10, 18.5' LT  
EP=693.64  
IE=689.75(E)  
IE=689.70(N)  
IE=689.47(S)
- STORM MH-J**  
MH TY A, 7", TY 1 FR&OL  
STA. 326+50, 21.5' LT  
RIM=694.27  
IE=690.09(NE)  
IE=689.67(NW)  
IE=689.77(S)  
LIZABETH F. KEIR & SALLY F. WIGZIZI & DAVID H. ESTES
- STORM INL-19**  
INLET SPECIAL No. 1  
STA. 326+79.7, 32.5' LT  
EP=693.97  
IE=690.25(W)  
IE=690.24(SE)



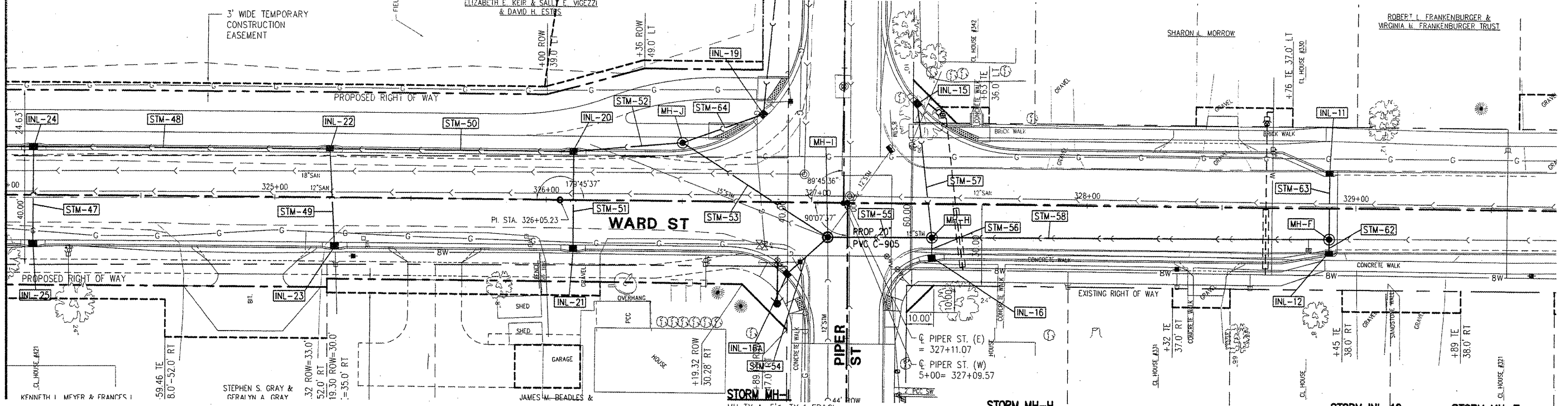
SEE SHEET 24 FOR WEST PIPER

- STORM INL-15**  
INLET SPECIAL No. 2  
STA. 327+36.4, 37.1' LT  
EP=693.88  
IE=690.73(E)
- STORM INL-11**  
INL TY A, 2", TY 3 FR&GR  
STA. 328+90, 12.8' LT  
EP=694.80  
IE=691.29(E)

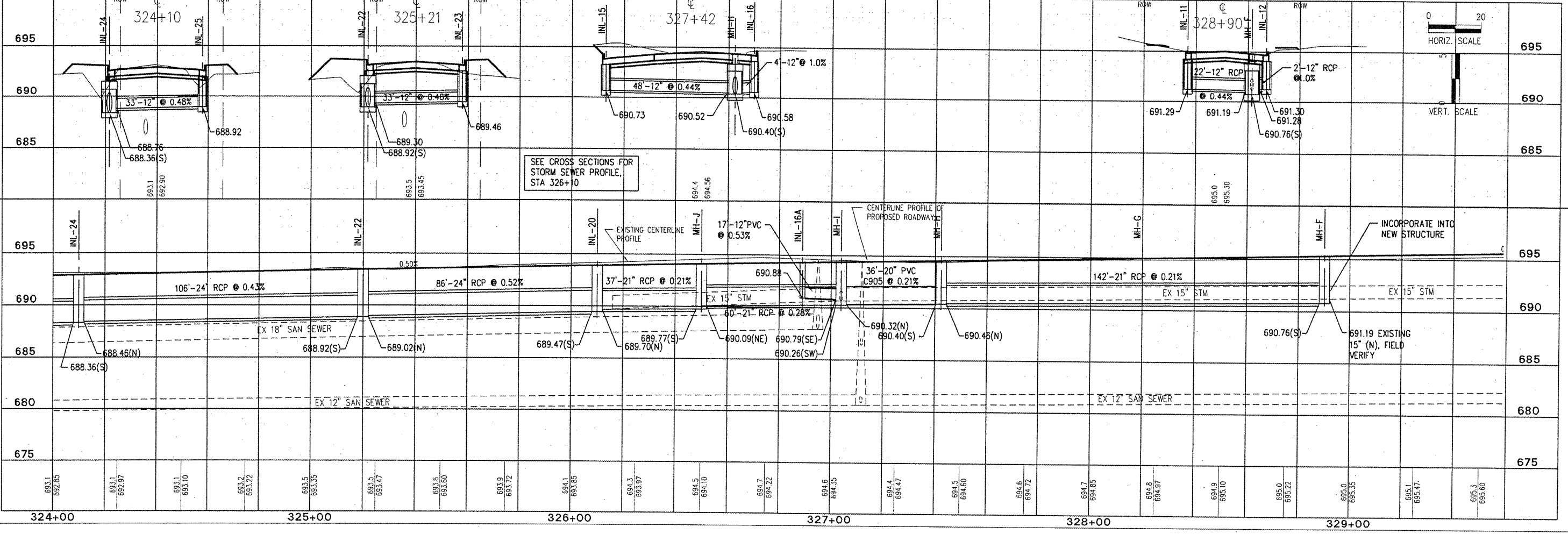
CITY OF MACOMB-WARD STREET	
SEC. 06-00139-00-PV	F.A.U. 6919
PROJ. M05040 (009)	
CONTRACT No. 89469	SHT 23 OF 59

SHEET NO. **23**  
of **59**

**McClure Engineering Associates, Inc.**  
Macomb, Illinois 61455  
714 East Jackson Street  
13091 833-4594  
FAX 13091 837-4909  
Design firm License #18-000816 Copyright 2008 by McClure Engineering Associates, Inc.



- STORM INL-25**  
INLET SPECIAL No. 1  
STA. 324+10, 17.75' RT  
EP=692.64  
IE=688.92(W)
- STORM INL-23**  
INLET SPECIAL No. 1  
STA. 325+22, 17.75' RT  
EP=693.20  
IE=689.46(W)
- STORM INL-21**  
INLET SPECIAL No. 1  
STA. 326+10, 17.75' RT  
EP=693.64  
IE=689.91(W)
- STORM INL-16A**  
INL TY A, 2", TY 3 FR&GR  
STA. 326+89.13, 36.27' RT  
EP=693.88  
IE=690.88(W)
- STORM MH-I**  
MH TY A, 5", TY 1 FR&OL  
STA. 327+04, 12.6' RT  
RIM=694.17  
IE=690.79(SE)  
IE=690.70(E)EXIST 12"  
(FIELD VERIFY)  
IE=690.36(N)  
IE=690.35(SW)
- STORM INL-16**  
INLET SPECIAL No. 1  
STA. 327+42.4, 19.9' RT  
EP=694.29  
IE=690.58(W)
- STORM MH-H**  
MH TY A, 5", TY 1 FR&OL  
STA. 327+43, 12.4' RT  
RIM=694.37  
IE=690.53(E)  
IE=690.52(W)  
IE=690.46(N)  
IE=690.40(S)
- STORM INL-12**  
INL TY A, 2", TY 3 FR&GR  
STA. 328+90, 15.7' RT  
EP=694.68  
IE=691.30(W)
- STORM MH-F**  
MH TY A, 5", TY 1 FR&OL  
STA. 328+90, 11.4' RT  
RIM=694.78  
IE=691.28(E)  
IE=691.19(W)  
IE=691.19(N)EXIST 15"(VERIFY)  
IE=690.76(S)



PLOTTING SCALE: 1" = 20'  
DRAWN BY: JAB  
CHECKED BY: JAP  
DATE: OCTOBER 2008

NO.	REVISIONS	DATE

**WARD STREET IMPROVEMENTS**  
**STORM SEWER PLAN AND PROFILE - STA. 324+00 TO 329+00**  
CITY OF MACOMB  
SOUTH WARD ST.  
FILE NAME: W:\DR\HW\3\MACOMB\WARDST\WARD-ST-2007 FIELD BOOK No. 2257 JOB NUMBER: 01-28-08098  
MACOMB, ILLINOIS