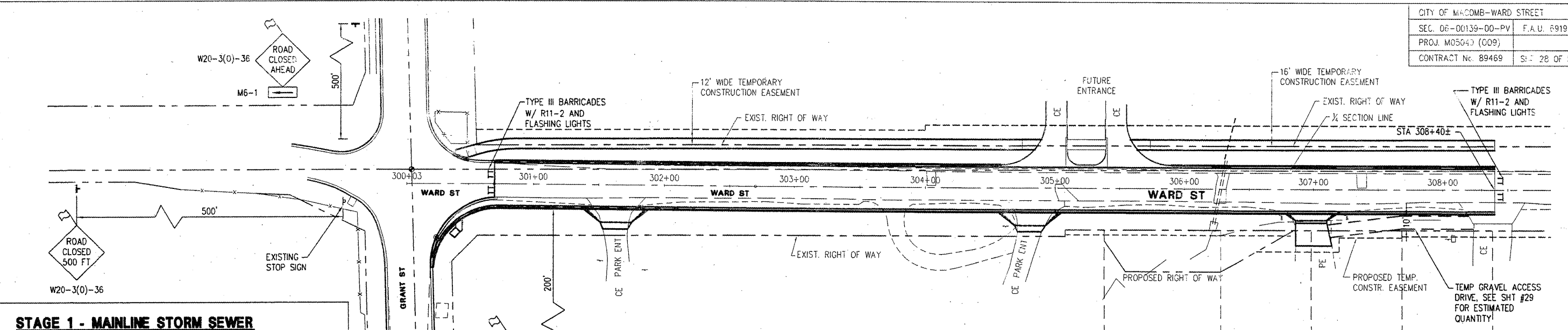


McClure
 Engineering Associates, Inc.
 Macomb, Illinois 61455
 114 East Jackson Street
 (309) 833-4594
 Design Firm License #184-000816 Copyright 2008 by McClure Engineering Associates, Inc.



STAGE 1 - MAINLINE STORM SEWER

CONSTRUCTION

1. WORK FROM SOUTH TO NORTH TO MINIMIZE TRAFFIC CONFUSION AND DISRUPTION.
2. CONSTRUCT ALL NEW MAINLINE STORM SEWERS.
3. COORDINATE UTILITY ADJUSTMENTS. (BY OTHERS)

TRAFFIC

A. CONSTRUCT UNDERGROUND UTILITIES WHILE KEEPING THE ROAD OPEN AS MUCH AS POSSIBLE. COMPLETE CLOSURES WILL NOT BE ALLOWED AT THIS TIME. A MINIMUM OF 1-LANE, 2-WAY TRAFFIC SHALL BE MAINTAINED DURING WORKING HOURS. FLAGGERS SHALL BE USED AS NEED DURING CONSTRUCTION OPERATIONS. OUTSIDE OF WORKING HOURS, 2-LANE, 2-WAY TRAFFIC SHALL BE MAINTAINED.

B. MINIMIZE CLOSURE OF DRIVEWAYS. DRIVEWAYS SHALL BE CLOSED ONLY DURING CONSTRUCTION OF STORM SEWER THROUGH ADJACENT PAVEMENT. NO DRIVEWAYS SHALL REMAIN CLOSED AFTER WORKING HOURS. THE DRIVEWAYS TO RAIN TREE TRAILER COURT AT STA. 313+15.5 SHALL NOT BE CLOSED SIMULTANEOUSLY.

STAGE 2

CONSTRUCTION

1. CONSTRUCT TEMPORARY ACCESS AS DETAILED.
2. REMOVE EXISTING PAVEMENT AND OTHER ITEMS INDICATED.
3. CONSTRUCT CROSSROAD AND LATERAL STORM SEWER.
4. PERFORM EARTHWORK.
5. FINAL UTILITY ADJUSTMENTS SHALL BE PERFORMED.
6. CONSTRUCT CURB AND GUTTER AND PAVEMENT
7. DRIVEWAY APRONS AT STA. 306+98.5 AND 308+38.5 SHALL NOT BE CONSTRUCTED UNTIL STAGE 2 IS OPEN TO TRAFFIC AND TEMPORARY AGGREGATE IS REMOVED
8. ALL OTHER DRIVEWAY APRONS, SIDEWALK, AND OTHER ITEMS WITHIN THE LIMITS OF STAGE 2 CAN BE COMPLETED NOW OR IN LATER STAGES.
9. REMOVE TEMPORARY ACCESS ITEMS AFTER OPENING WARD STREET BACK UP TO TRAFFIC.

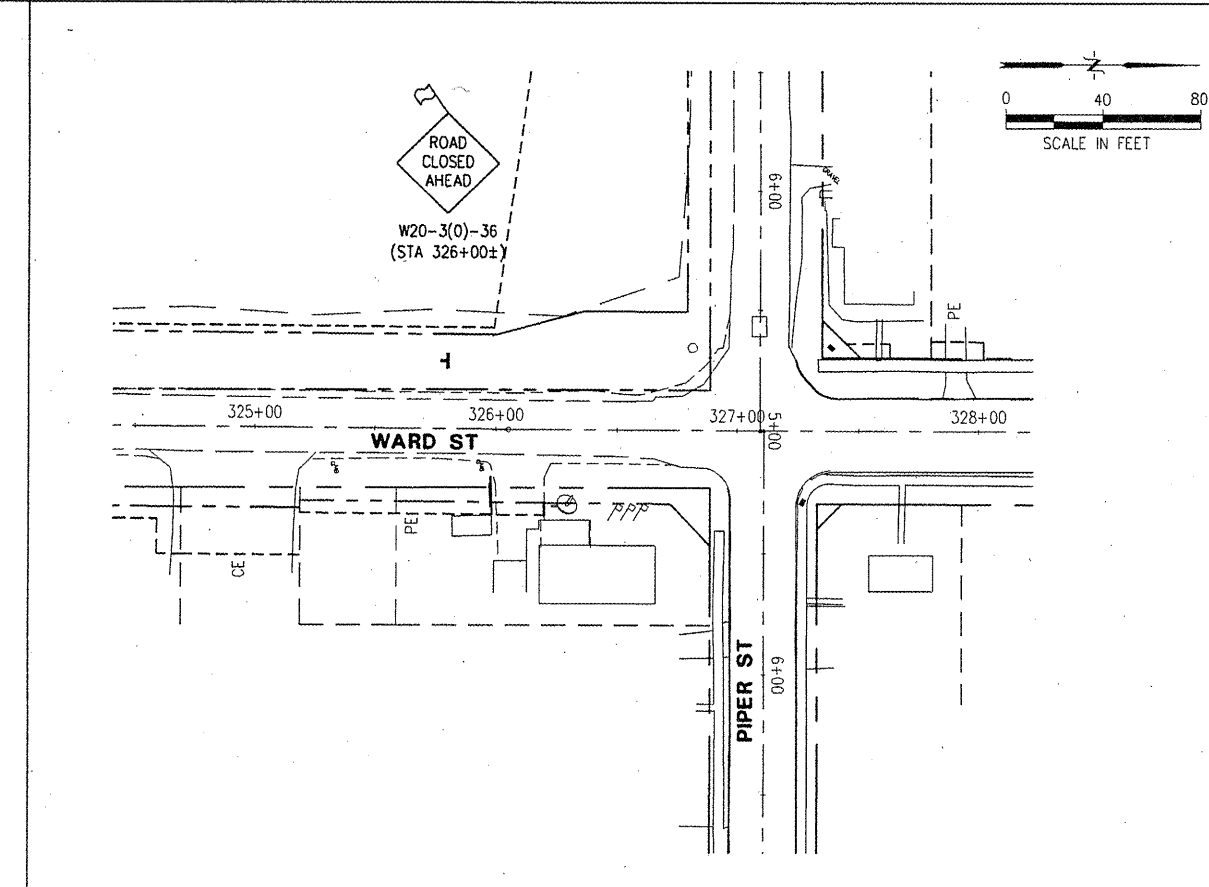
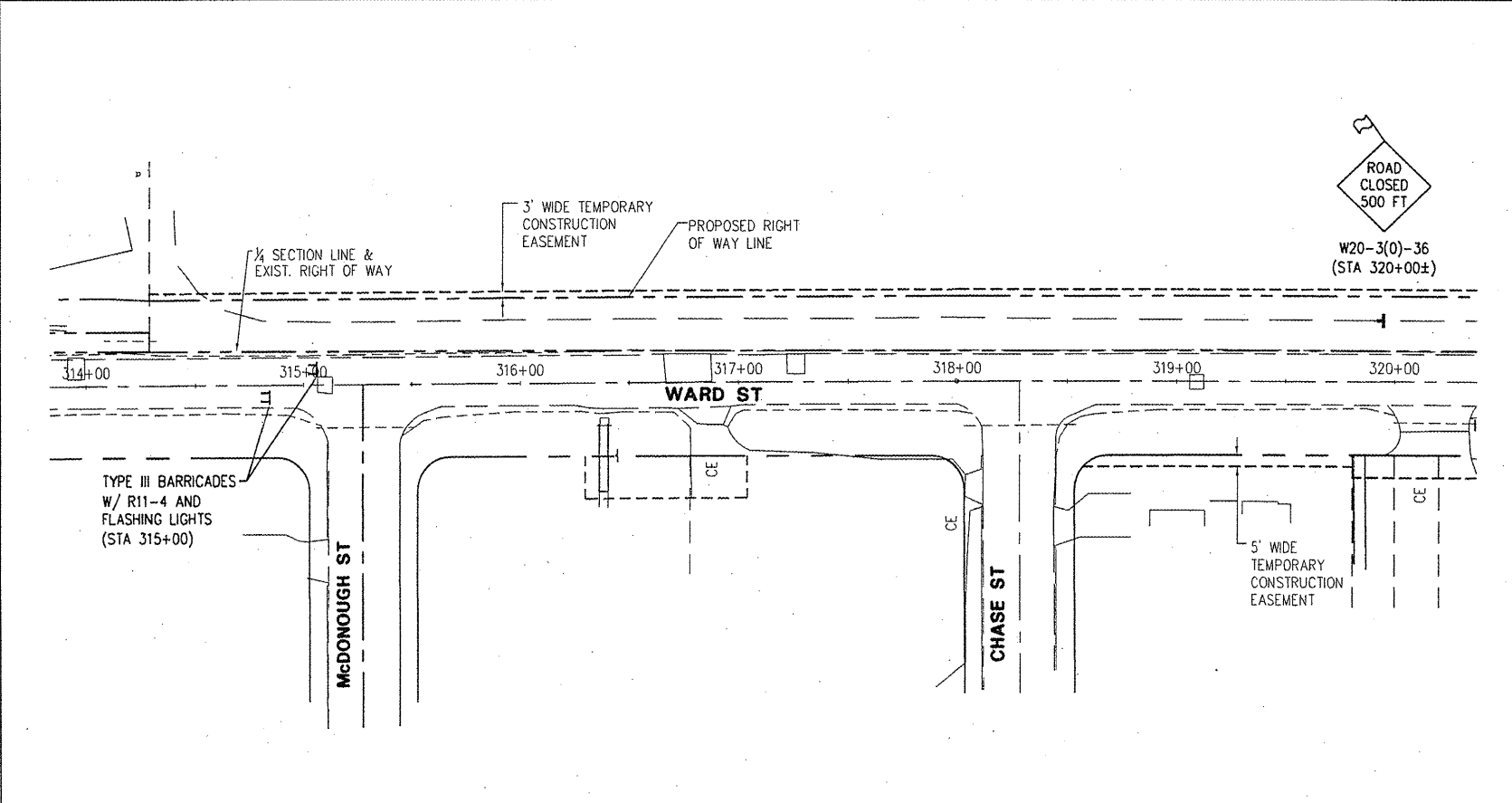
STAGE 2

TRAFFIC

- A. CONSTRUCT IMPROVEMENTS FROM GRANT STREET TO STA. 308+40 WHILE CLOSING THIS PORTION OF SOUTH WARD STREET TO ALL TRAFFIC. TWO-LANE, 2-WAY TRAFFIC SHALL BE MAINTAINED OUTSIDE OF THESE LIMITS.
- B. A TEMPORARY GRAVEL ACCESS DRIVE SHALL BE CONSTRUCTED FROM THE DRIVE AT STA. 306+98.5 TO THE DRIVE AT STA. 308+38.5, PRIOR TO CLOSING THIS PORTION OF WARD STREET. THIS WILL MAINTAIN ACCESS TO ALL RESIDENTS DURING THIS STAGE OF CONSTRUCTION.
- C. COORDINATE REMOVAL OF EXISTING BARRICADES LOCATED IN PATTON PARK WITH THE CITY OF MACOMB DURING THIS STAGE OF CONSTRUCTION TO ALLOW FOR ACCESS FROM THE SOUTH ENTRANCE TO THE PARK WHILE THE NORTH ENTRANCE IS CLOSED OFF.
- D. IMPLEMENT SPECIAL SIGN TABLE IN SPECIAL PROVISIONS.

STAGE 2
 GRANT STREET TO STA 308+40:

PLOTTING SCALE: 1" = 40'	DATE:
DRAWN BY: JAH	DATE:
CHECKED BY: JAR	DATE:
DATE: OCTOBER 2008	



WARD STREET IMPROVEMENTS
CONSTRUCTION STAGING PLAN
 CITY OF MACOMB

SOUTH WARD ST.
 FILE NAME: \MACOMB\WARDST\WARD-ST-2007-STAGING FIELD BOOK No: 2257 JOB NUMBER: 01-28-08-098
 MACOMB, ILLINOIS
 FIELD BOOK No: 2257