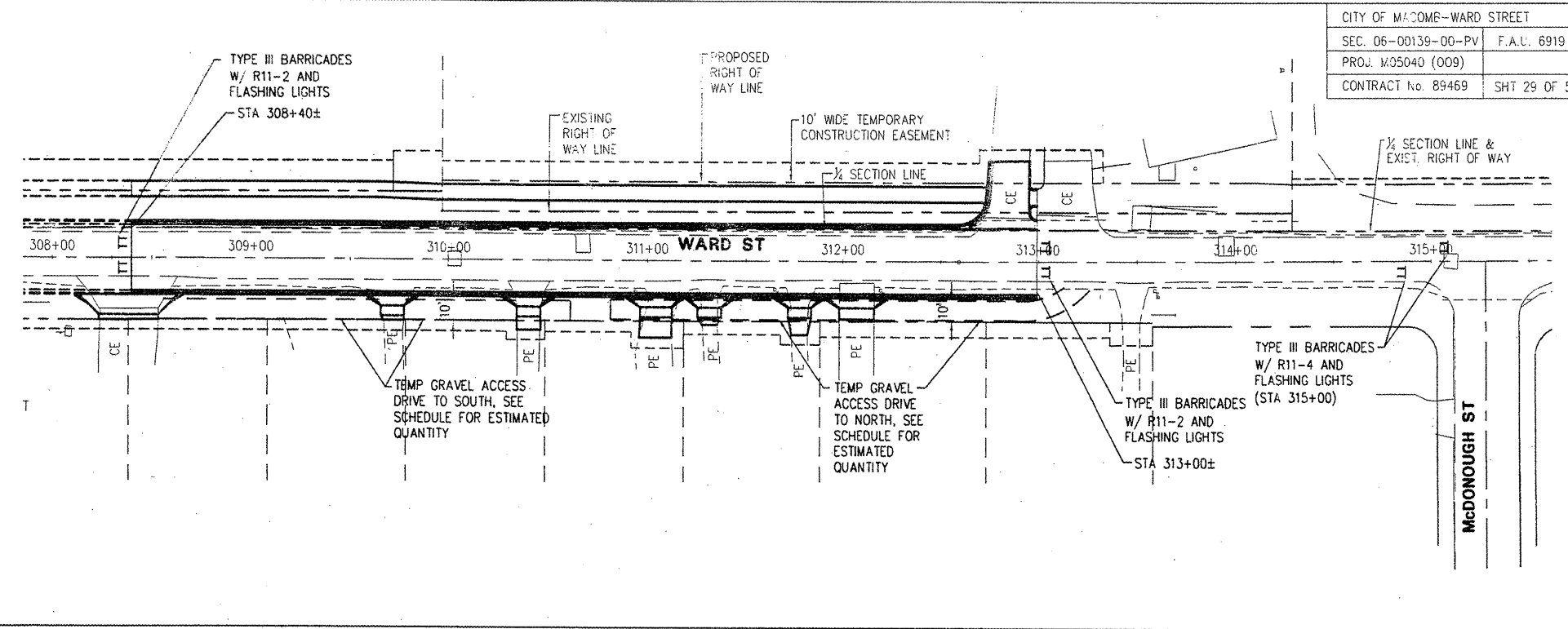
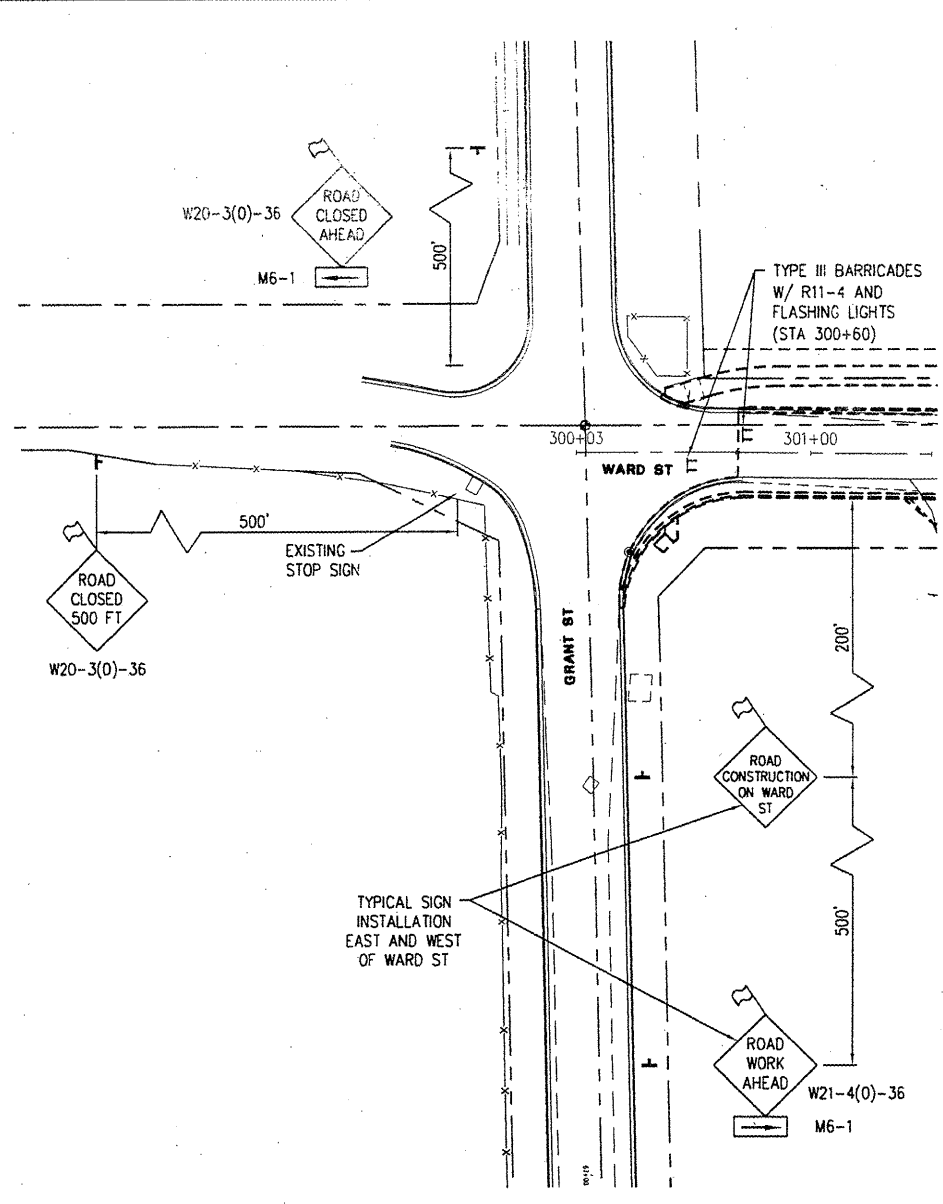


McClure Engineering Associates, Inc.
 Macomb, Illinois 61455
 714 East Jackson Street
 (309) 633-4594
 Design firm license #184-000816 Copyright 2008 by McClure Engineering Associates, Inc.

PLOTTING SCALE: 1" = 40'
 DRAWN BY: TAB/JAH
 CHECKED BY: ECM
 DATE: AUGUST 2008

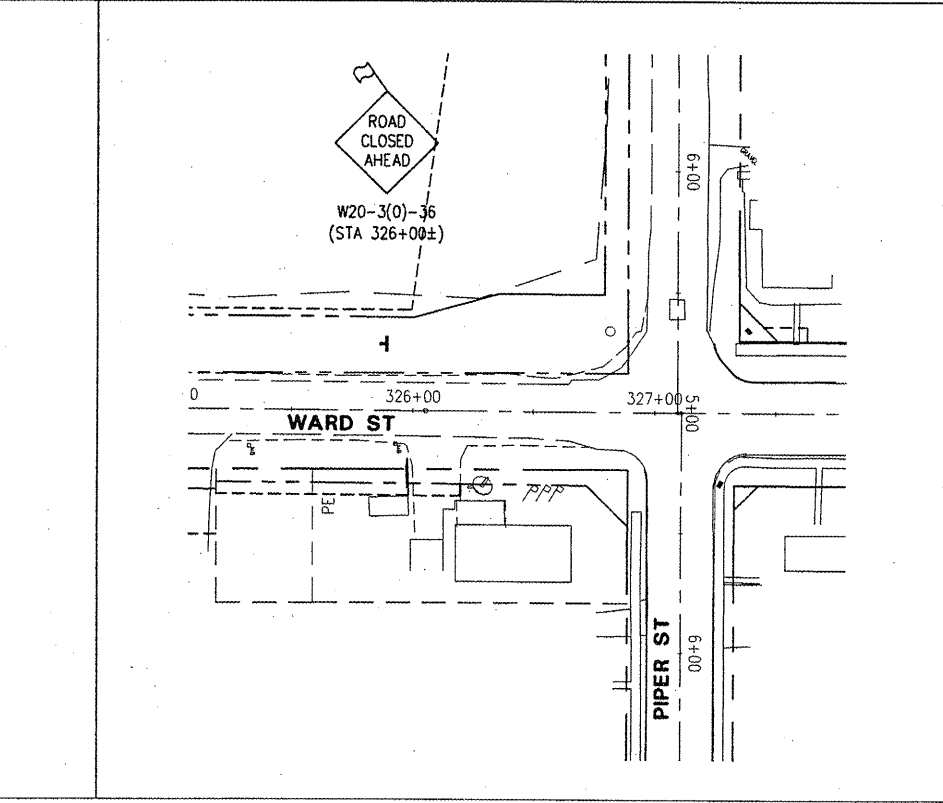
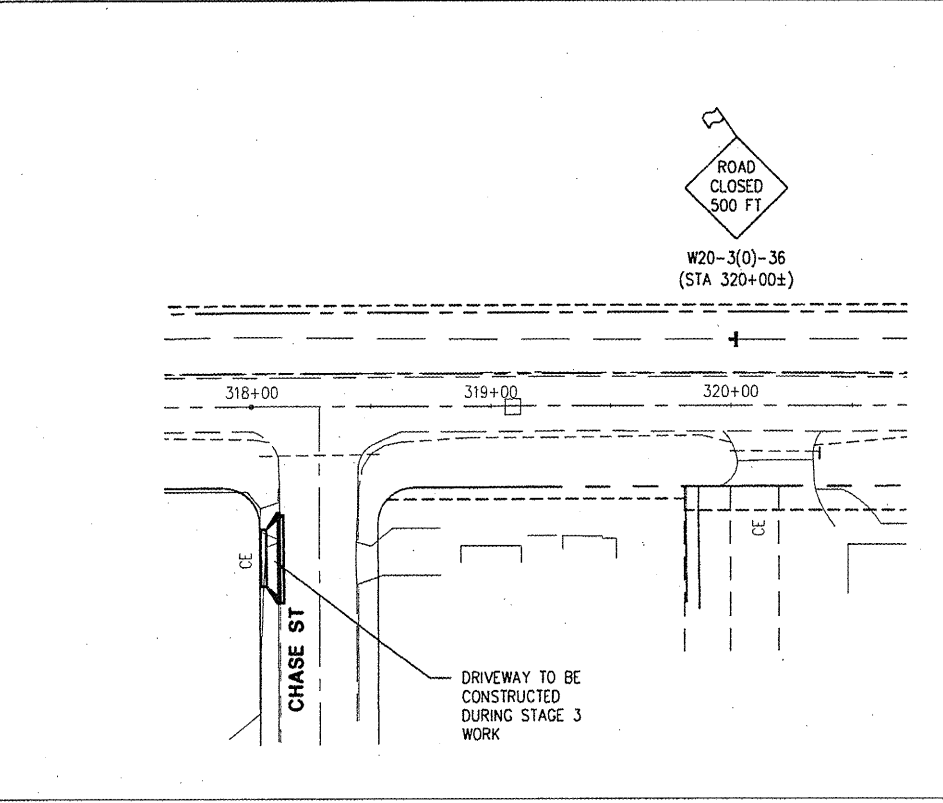
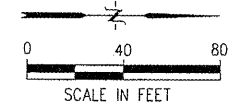
NO.	REVISIONS	DATE

WARD STREET IMPROVEMENTS CONSTRUCTION STAGING PLAN
 CITY OF MACOMB
 SOUTH WARD ST.
 FILE NAME: \MACOMB\WARDST\WARD-ST-2007-STAGING FIELD BOOK No. 2257 JOB NUMBER: 02-28-08-058
 MACOMB, ILLINOIS



AGGREGATE FOR TEMPORARY ACCESS

LOCATION	THICKNESS	TONS
CONSTRUCTION STAGING ACCESS		
RT. STA. 307+65±	6"	42
RT. STA. 305+56 TO STA. 310+61	6"	89
RT. STA. 310+82 TO STA. 313+10	6"	78
RT. STA. 312+80 TO STA. 313+57	6"	35
RT. STA. 323+95 TO STA. 324+60	6"	28
TEMPORARY DETOUR ROAD		
LT. STA. 326+00±	12"	493
STORM SEWER INSTALLATION	8"	183
DRIVEWAY TEMPORARY ACCESS	6"	176
TOTAL		1124



STAGE 3

CONSTRUCTION

1. CONSTRUCT TEMPORARY ACCESS AS DETAILED.
2. REMOVE EXISTING PAVEMENT AND OTHER ITEMS INDICATED.
3. CONSTRUCT CROSSROAD AND LATERAL STORM SEWER.
4. PERFORM EARTHWORK.
5. FINAL UTILITY ADJUSTMENTS SHALL BE PERFORMED.
6. CONSTRUCT CURB AND GUTTER AND PAVEMENT
7. DRIVEWAY APRONS AT STA. 308+38.5, 309+72, 310+39.9, 311+31.4, 311+78 AND 312+07.2 SHALL NOT BE CONSTRUCTED UNTIL STAGE 3 IS OPEN TO TRAFFIC AND TEMPORARY AGGREGATE BETWEEN DRIVEWAYS IS REMOVED.
8. ALL OTHER DRIVEWAY APRONS, SIDEWALK, AND OTHER ITEMS WITHIN THE LIMITS OF STAGE 3 CAN BE COMPLETED NOW OR IN LATER STAGES.
9. REMOVE TEMPORARY ACCESS ITEMS AFTER OPENING WARD STREET BACK UP TO TRAFFIC.

TRAFFIC

- A. CONSTRUCT IMPROVEMENTS FROM STA. 308+40 TO STA. 313+00 WHILE CLOSING THIS PORTION OF SOUTH WARD STREET TO ALL TRAFFIC. WARD STREET SHALL BE CLOSED TO THRU TRAFFIC FROM STA. 300+50 TO STA. 308+40 AND STA. 313+00 TO STA. 315+00. TWO-LANE, 2-WAY TRAFFIC SHALL BE MAINTAINED OUTSIDE OF THESE LIMITS.
- B. TEMPORARY GRAVEL ACCESS SHALL BE CONSTRUCTED PRIOR TO CLOSING THIS PORTION OF WARD STREET. GRAVEL SHALL BE PLACED BETWEEN DRIVES AT STA. 308+38.5, STA. 309+72, AND STA. 310+39.9, ALLOWING ACCESS FOR THESE RESIDENCES TO THE SOUTH OF THE CONSTRUCTION LIMITS. GRAVEL SHALL ALSO BE PLACED BETWEEN DRIVES AT STA. 311+04, STA. 311+31.4, STA. 311+78, AND STA. 312+07.2, OUTLETTING VEHICLES FROM THESE RESIDENCES JUST TO THE NORTH OF THE CONSTRUCTION LIMITS FOR THIS PHASE.
- C. IMPROVEMENTS FOR THE CHASE STREET ENTRANCE TO THE CHURCH OF CHRIST SHALL BE CONSTRUCTED SIMULTANEOUSLY WITH STAGE 3 WORK. ACCESS TO THE CHURCH OFF OF WARD STREET SHALL REMAIN OPEN UNTIL THESE IMPROVEMENTS ARE COMPLETED AND THIS ENTRANCE IS AVAILABLE TO TRAFFIC.
- D. IMPLEMENT SPECIAL SIGN TABLE IN SPECIAL PROVISIONS.

STAGE 3
 STA 308+40: TO STA 313+00: