

**McClure Engineering Associates, Inc.**  
 114 East Jackson Street  
 Macomb, Illinois 61455  
 (815) 833-4699 FAX (815) 833-4698  
 Design Firm License #18-000016 Copyright 2008 by McClure Engineering Associates, Inc.

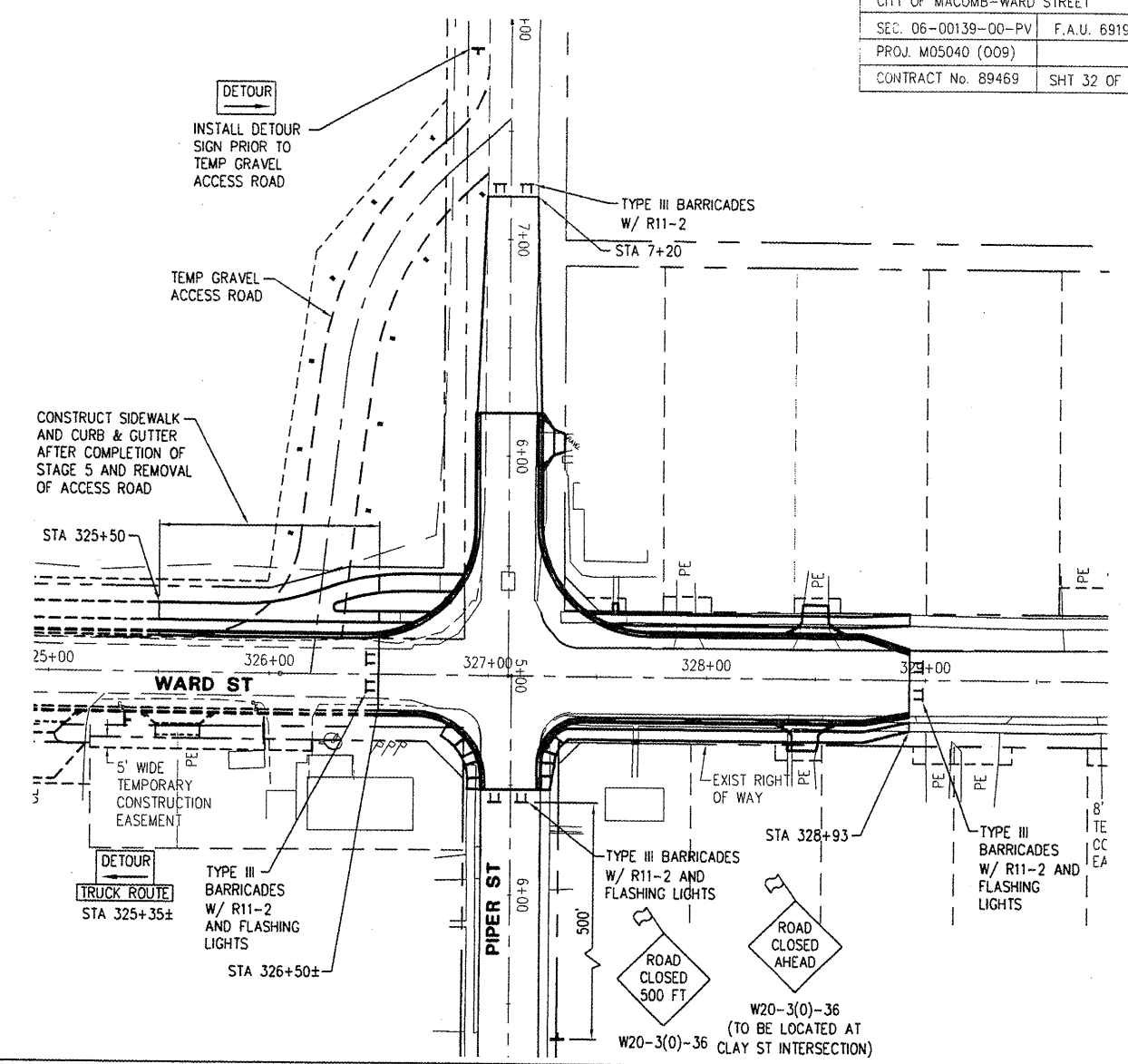
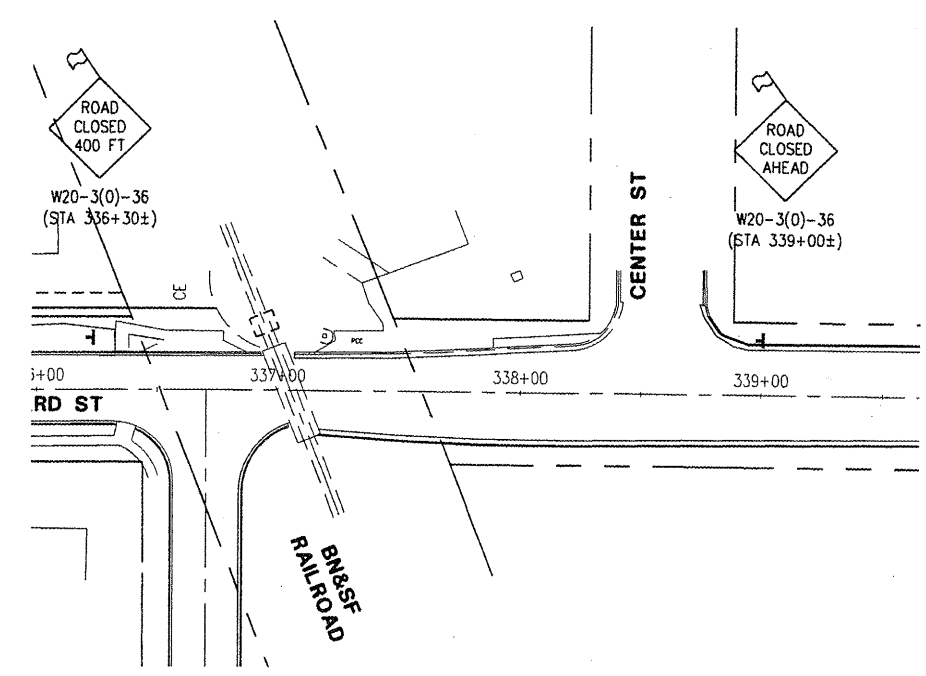
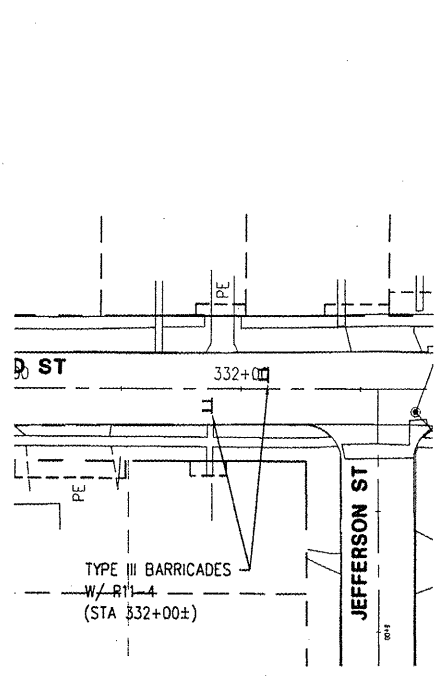
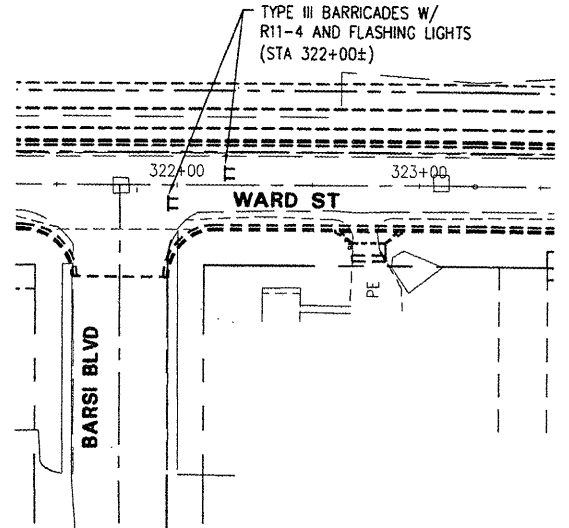
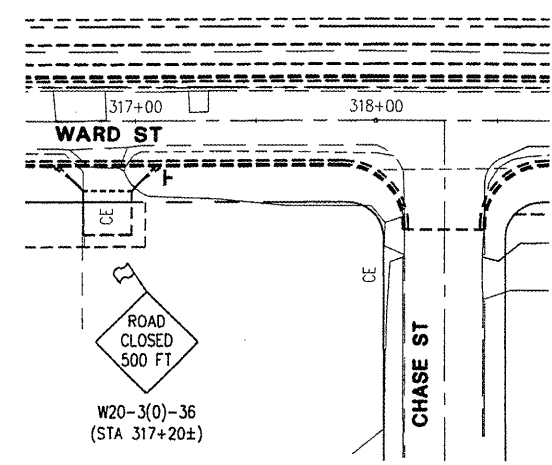
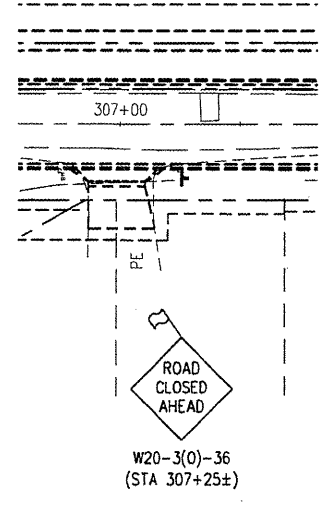
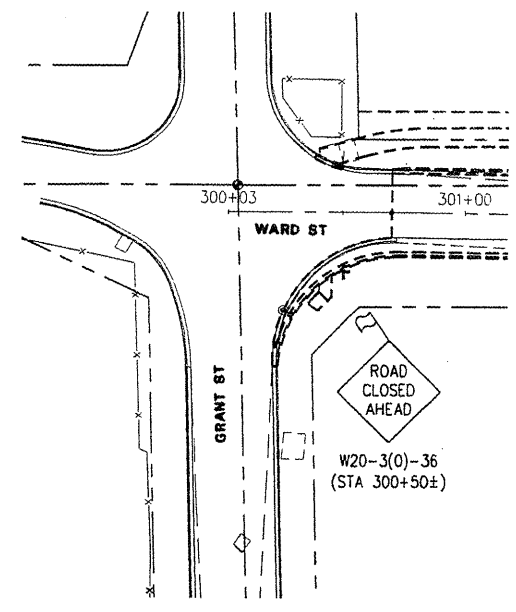
PLOTTING SCALE: 1" = 40'  
 DRAWN BY: JAH  
 CHECKED BY: JAR  
 DATE: OCTOBER 2008

NO.	REVISIONS	ITEM	DATE

**WARD STREET IMPROVEMENTS CONSTRUCTION STAGING PLAN**  
 CITY OF MACOMB

MACOMB, ILLINOIS  
 FIELD BOOK No. 2257 JOB NUMBER: 03-28-08-098  
 FILE NAME: \MACOMB\WARD\ST-2007-STAGING

SEE STAGE 4 FOR TYPICAL SIGN INSTALLATION TO THE EAST, WEST AND SOUTH OF WARD ST AND GRANT ST INTERSECTION



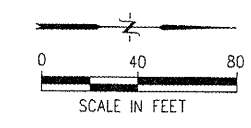
**STAGE 6**

**CONSTRUCTION**

1. REMOVE EXISTING PAVEMENT AND OTHER ITEMS INDICATED.
2. CONSTRUCT CROSSROAD AND LATERAL STORM SEWER.
3. PERFORM EARTHWORK.
4. FINAL UTILITY ADJUSTMENTS SHALL BE PERFORMED.
5. CONSTRUCT CURB AND GUTTER AND PAVEMENT.
6. DRIVEWAY APRONS, SIDEWALK, AND OTHER ITEMS CAN BE COMPLETED NOW OR AFTER STAGE 6 PAVEMENT IS OPEN TO TRAFFIC.
7. FOLLOWING REOPENING OF PIPER STREET INTERSECTION, REMOVE TEMPORARY GRAVEL ACCESS ROAD AND RESTORE SURFACE TO ORIGINAL CONDITION

**TRAFFIC**

- A. CONSTRUCT IMPROVEMENTS FROM STA. 326+50 TO STA. 328+93 WHILE CLOSING THIS PORTION OF WARD STREET AND THE PIPER STREET INTERSECTION TO ALL TRAFFIC. WARD STREET SHALL BE CLOSED TO THRU TRAFFIC FROM STA. 322+00 TO STA. 326+50 AND STA. 327+75 TO STA. 332+00. TWO-LANE, TWO-LANE, 2-WAY TRAFFIC SHALL BE MAINTAINED OUTSIDE OF THESE LIMITS.
- B. TRAFFIC TO BUSINESSES ON WEST PIPER STREET SHALL BE DIRECTED BY WAY OF THE TEMPORARY GRAVEL ACCESS ROAD COMPLETED IN STAGE 5.
- C. ACCESS TO THE PROPERTY AT THE NORTHWEST CORNER OF WARD AND PIPER WILL BE GAINED THROUGH THE ALLEY ADJACENT TO THE WEST EDGE OF THE PROPERTY. RESIDENTS OF THE PROPERTY AT 331 S. WARD STREET SHALL BE ALLOWED TO PARK ON THE STREET DURING THIS STAGE OF CONSTRUCTION.
- D. IMPLEMENT SPECIAL SIGN TABLE IN SPECIAL PROVISIONS.



**STAGE 6**  
 STA 326+50 TO STA 328+93