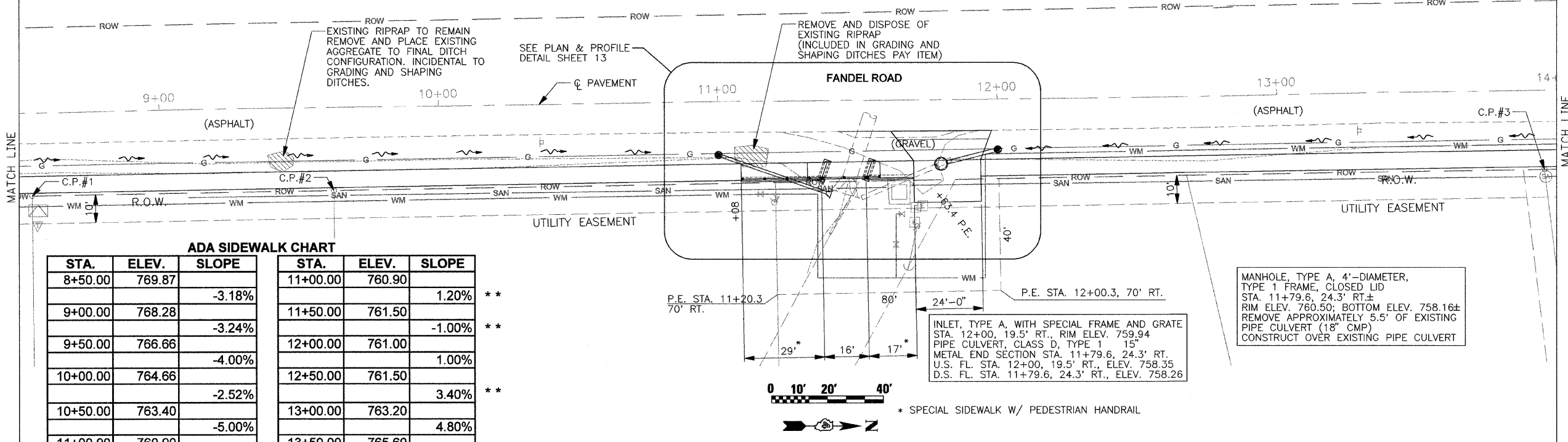


PLAN SURVEYED BY DATE  
 PLOTTED BY  
 CHECKED BY  
 RT. OF WAY CHECKED BY  
 NO. CAD FILE NAME

PROFILE SURVEYED BY DATE  
 PLOTTED BY  
 CHECKED BY  
 STRUCTURE NOTATIONS CHFD  
 NO. FILE NAME

INLET, TYPE A, WITH SPECIAL FRAME AND GRATE  
 STA. 11+00, 19.7' RT., RIM ELEV. 759.74  
 PIPE CULVERT, CLASS D, TYPE 1 12"  
 METAL END SECTION STA. 11+38.3, 33.9' RT.  
 U.S. FL. STA. 11+00, 19.7' RT., ELEV. 758.24  
 D.S. FL. STA. 11+38.3, 32.9' RT., ELEV. 756.79

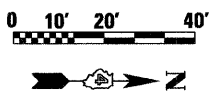
MANHOLE, TYPE A, 4'-DIAMETER,  
 TYPE 1 FRAME, CLOSED LID  
 STA. 11+79.6, 24.3' RT.±  
 RIM ELEV. 760.50; BOTTOM ELEV. 758.16±  
 REMOVE APPROXIMATELY 5.5' OF EXISTING  
 PIPE CULVERT (18" CMP)  
 CONSTRUCT OVER EXISTING PIPE CULVERT



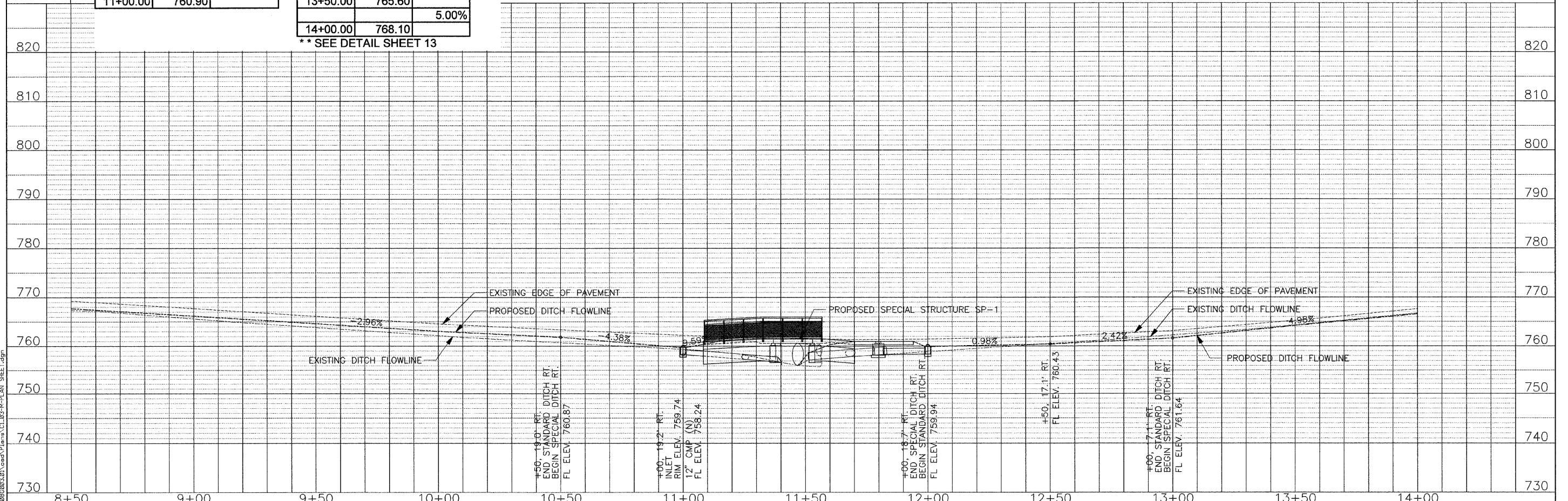
**ADA SIDEWALK CHART**

STA.	ELEV.	SLOPE	STA.	ELEV.	SLOPE
8+50.00	769.87	-3.18%	11+00.00	760.90	1.20% **
9+00.00	768.28	-3.24%	11+50.00	761.50	-1.00% **
9+50.00	766.66	-4.00%	12+00.00	761.00	1.00%
10+00.00	764.66	-2.52%	12+50.00	761.50	3.40% **
10+50.00	763.40	-5.00%	13+00.00	763.20	4.80%
11+00.00	760.90		13+50.00	765.60	5.00%
			14+00.00	768.10	

\*\* SEE DETAIL SHEET 13



\* SPECIAL SIDEWALK W/ PEDESTRIAN HANDRAIL



FILE NAME: X:\PEL\12\2008\080003.dwg, Plans\CL03-M-PLAN, SHEET.dgn

	USER NAME = oxi	DESIGNED -	REVISED -	<b>STATE OF ILLINOIS</b> <b>DEPARTMENT OF TRANSPORTATION</b>	<b>PLAN &amp; PROFILE</b> <b>STA 8+50 TO STA 14+00</b>	F.A. SECTION COUNTY TOTAL SHEET RTE. 08-00000-00-SW WOODFORD 21 No. CONTRACT NO. 89503 9
	PLOT SCALE = 20,000' / IN. PLOT DATE = 4/7/2009	CHECKED - DATE -	REVISED - REVISED - REVISED -			