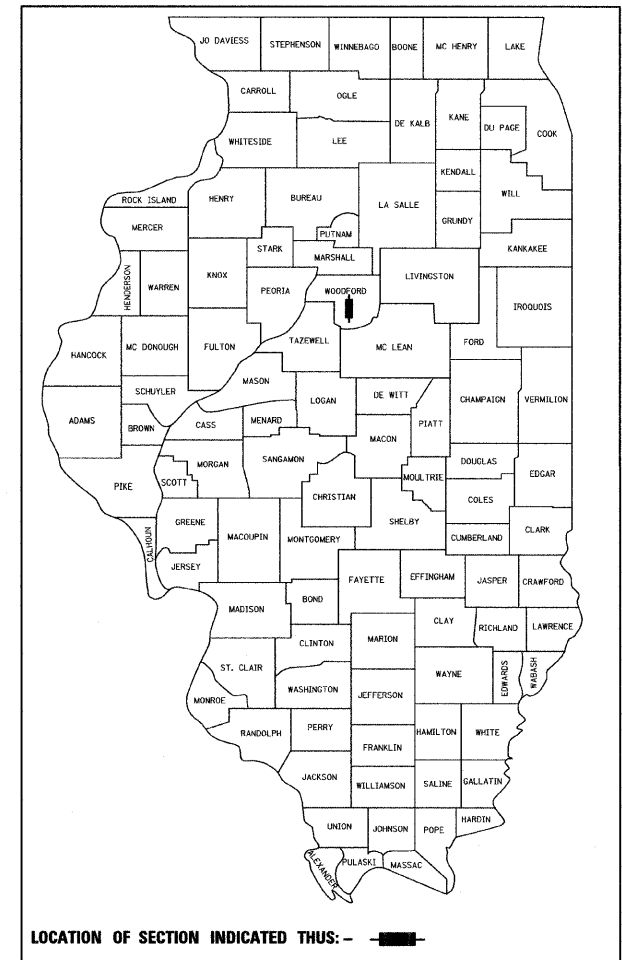


F.A. RTE.	SECTION	COUNTY	TOTAL SHEETS	SHEET NO.
	08-0000-00-SW	WOODFORD	21	1
		ILLINOIS	CONTRACT NO. 89503	

P-40-032-08
C-40-032-08



LOCATION OF SECTION INDICATED THUS: - ■ -

STATE OF ILLINOIS

DEPARTMENT OF TRANSPORTATION

DIVISION OF HIGHWAYS

VILLAGE OF GERMANTOWN HILLS
FANDEL ROAD
SIDEWALK IMPROVEMENTS

UNMARKED ROUTE
SECTION 08-0000-00-SW
PROJECT SRTS-4008(010)
SIDEWALK IMPROVEMENT
WOODFORD COUNTY

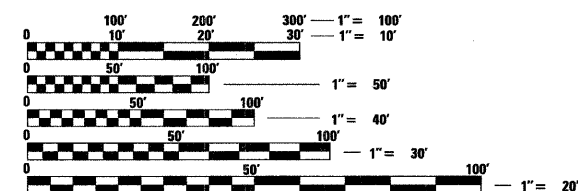
C-40-032-08

INDEX OF SHEETS

- 1 COVER SHEET
- 2 STANDARD ABBREVIATIONS AND SYMBOLS
- 3 GENERAL NOTES & SUMMARY OF QUANTITIES
- 4 TYPICAL SECTIONS
- 5-6 SCHEDULE OF QUANTITIES
- 7-11 PLAN & PROFILES
- 12 EROSION CONTROL PLAN
- 13-14 DETAILS
- 15-16 STRUCTURE DETAILS
- 17-21 CROSS SECTIONS

STANDARDS

- 000001-05
- 424001-05
- 602301-02
- 602401-02
- 602601-02
- 604001-03
- 604036-02
- 701006-03
- 701011-02
- 701301-03
- 701326-03
- 701901-01
- 720001-01
- 720006-02
- 728001-01
- 729001-01



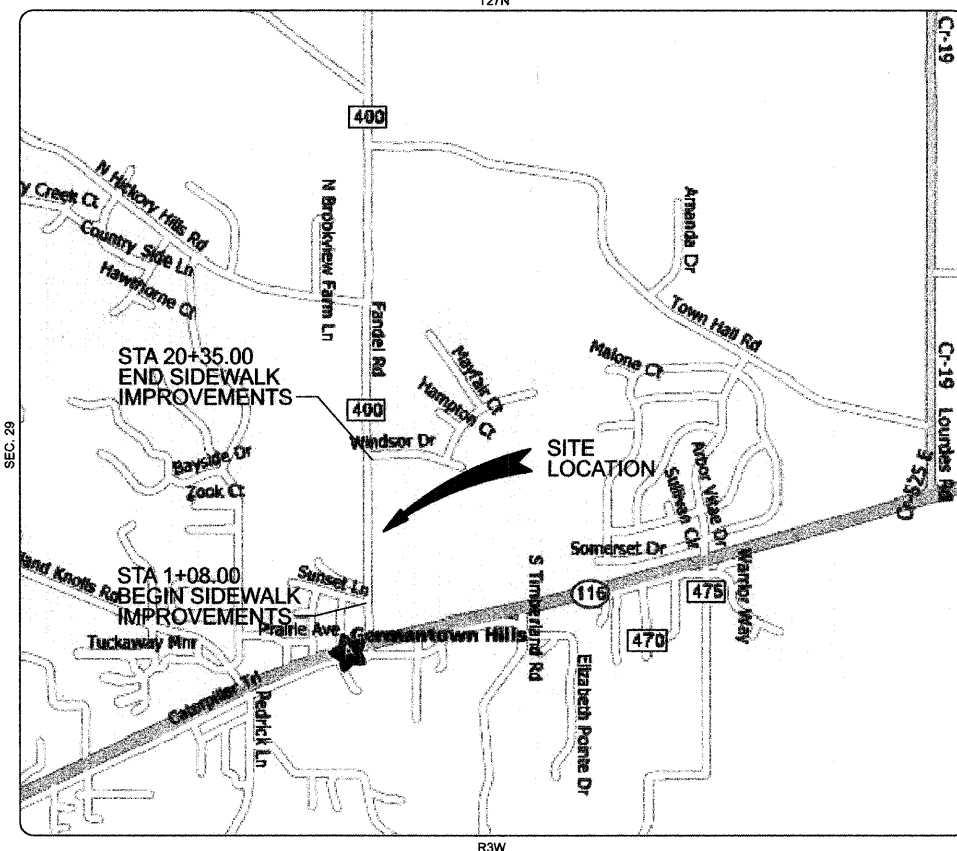
FULL SIZE PLANS HAVE BEEN PREPARED USING STANDARD ENGINEERING SCALES. REDUCED SIZED PLANS WILL NOT CONFORM TO STANDARD SCALES. IN MAKING MEASUREMENTS ON REDUCED PLANS, THE ABOVE SCALES MAY BE USED.

J.U.L.I.E.
JOINT UTILITY LOCATION INFORMATION FOR EXCAVATION
1-800-892-0123
OR 811

PROJECT ENGINEER
PROJECT MANAGER

CONTRACT NO. 89503

Foth
Foth Infrastructure & Environment, LLC
7500 North Harker Drive
Peoria, IL 61615
Phone: 309-691-5300 Fax: 309-691-1892
Illinois Registration Number 184.004913



LOCATION MAP
NOT TO SCALE

GROSS LENGTH = 1,927 FT. = 0.364 MILE
NET LENGTH = 1,927 FT. = 0.364 MILE

JAMES F. SCHMUIDE
36931 JAMES F. SCHMUIDE, P.E.
REGISTERED PROFESSIONAL ENGINEER
ILLINOIS NO. 36931 EXPIRES 11-30-09
DATE
April 6, 2009

VILLAGE OF GERMANTOWN HILLS

APPROVED April 6 2009
Marvin J. Johnson
MARVIN J. JOHNSON
VILLAGE PRESIDENT

STATE OF ILLINOIS
DEPARTMENT OF TRANSPORTATION

PASSED 4/8 2009
Charles Caballe
DISTRICT FOUR ENGINEER OF
LOCAL ROADS & STREETS

Releasing For
Bid Based on
Limited Review April 6 2009
James F. Schmuide
DEPUTY DIRECTOR OF HIGHWAYS,
REGION THREE ENGINEER

PRINTED BY THE AUTHORITY
OF THE STATE OF ILLINOIS

COMMITMENTS

No Commitments.

GENERAL NOTES

UTILITIES – LOCATIONS/INFORMATION ON PLANS

The locations of existing water mains, gas mains, sewers, electric power lines, telephone lines and other utilities as shown on the plans are based on careful field investigation and the best information available, but they are not guaranteed. Unless elevations are shown — all utility locations shown on the cross sections are based on the approximate depth supplied by the utility company. It shall be the Contractor's responsibility to ascertain their exact location from the utility companies and by field inspection.

TREE REMOVAL – UTILITY RELOCATION

Tree removal may be necessary prior to utility companies being able to relocate their facilities outside the construction limits. The Contractor should coordinate any contract tree removal activities with the utility companies to eliminate conflicts and potential delays caused by utility tree removal activities or incomplete utility relocations.

TEMPORARY MATERIAL REQUIREMENTS – UTILITY AND DRIVEWAY CROSSINGS

Incidental bituminous surface shall be used for all temporary side road crossings. Aggregate surface course may be used for all driveway crossings except during winter shutdown in accordance with Article 107.09.

ORDERING LENGTH CONFIRMATION – DRAINAGE ITEMS

The Contractor shall consult with the Engineer in regard to the exact length of the box/pipe culverts, storm sewers, and/or pipe drains required prior to ordering these items.

STORM SEWER AND WATER MAIN SEPARATION

Storm sewer water main is to be used at locations where lateral separation between the sewer and water main is less than 10 ft. (3.0 m) and the water main invert is less than 1.5 ft. (0.45 m) above the storm sewer crown.

ENVIRONMENTAL REVIEWS

Prior to the use of any proposed borrow areas, use areas (temporary access roads, detours, run-arounds, etc.) and/or waste areas, the Contractor shall file the required environmental resource request surveys according to Section 107.22 of the Standard Specifications. These surveys are required in order for the Department to conduct cultural and biological resource surveys for the proposed site.

Prior to any waste materials being removed from the construction site the required environmental resource surveys will need to be obtained and filed by the Contractor. Excess waste products removed from the construction site shall be disposed of as required in Section 202.03 of the Standard Specifications.

Any protruding metal bars shall be removed prior to the disposal of broken concrete at approved disposal sites.

The required environmental resource documentation shall include the following:

- * BDE Form 2289 (Environmental Survey Request)
- * A location map showing the size limits and location of the use area
- * Signed property owner agreement form
- * Color photographs depicting the use area

Please note that a minimum of two weeks shall be allowed for the District to obtain the required environmental clearances.

GRADING & SHAPING DITCHES\EMBANKMENT UTILIZATION\BORROW EXCAVATION

The earthwork balance assumes a 25% shrinkage factor. The area of Porous Granular Embankment has been removed from the calculation.

$C = 327.5 \text{ cy}$ $F = 264 \text{ cy}$

Onsite materials are to be utilized first. In the event additional materials are required, 50 cy of borrow material has been provided by the Contract.

CODE #	PAY ITEM	UNIT	QUANTITY
20100210	TREE REMOVAL (OVER 15 UNITS DIAMETER)	UNIT	24
20400100	BORROW EXCAVATION	CU YD	90
20700110	POROUS GRANULAR EMBANKMENT	TON	214
20800150	TRENCH BACKFILL	CU YD	135
21400100	GRADING AND SHAPING DITCHES	FOOT	1694
25000210	SEEDING, CLASS 2A	ACRE	0.5
25000400	NITROGEN FERTILIZER NUTRIENT	POUND	39
25000500	PHOSPHORUS FERTILIZER NUTRIENT	POUND	39
25000600	POTASSIUM FERTILIZER NUTRIENT	POUND	39
25100105	MULCH, METHOD 1	ACRE	0.5
25100630	EROSION CONTROL BLANKET	SQ YD	2071
28000300	TEMPORARY DITCH CHECKS	EACH	4
28000400	PERIMETER EROSION BARRIER	FOOT	1565
28000500	INLET AND PIPE PROTECTION	EACH	17
42300400	PORTLAND CEMENT CONCRETE DRIVEWAY 8 INCH	SQ YD	186
42400100	PORTLAND CEMENT CONCRETE SIDEWALK 4 INCH	SQ FT	9566
42400410	PORTLAND CEMENT CONCRETE SIDEWALK 8 INCH	SQ FT	648
42400440	PORTLAND CEMENT CONCRETE SIDEWALK 6 INCH, SPECIAL	SQ FT	672
42400800	DETECTABLE WARNINGS	SQ FT	24
44212899	PAVEMENT PATCHING (FULL DEPTH)	SQ YD	8
48102100	AGGREGATE WEDGE SHOULDER, TYPE B	TON	51
50104600	CONCRETE RETAINING WALL REMOVAL	FOOT	11.6
50105210	REMOVE EXISTING CULVERTS	FOOT	157
50900895	PEDESTRIAN RAILING	FOOT	266
542D0217	PIPE CULVERTS, CLASS D, TYPE 1 12"	FOOT	250
542D0220	PIPE CULVERTS, CLASS D, TYPE 1 15"	FOOT	21
54215547	METAL END SECTIONS 12"	EACH	8
54215550	METAL END SECTIONS 15"	EACH	1
550A0050	STORM SEWERS, CLASS A, TYPE 1 12"	FOOT	430
550B0020	STORM SEWERS, CLASS B, TYPE 1 6"	FOOT	10
55100500	STORM SEWER REMOVAL 12"	FOOT	2
* 56109210	WATER VALVES TO BE ADJUSTED	EACH	3
* 56400300	FIRE HYDRANTS TO BE ADJUSTED	EACH	1
60100915	PIPE DRAINS 6"	FOOT	48
60107600	PIPE UNDERDRAINS 4"	FOOT	44
60108100	PIPE UNDERDRAINS 4" (SPECIAL)	FOOT	6
60218400	MANHOLES, TYPE A, 4'-DIAMETER, TYPE 1 FRAME, CLOSED LID	EACH	7
60220230	MANHOLES, TYPE A, 4'-DIAMETER, WITH SPECIAL FRAME AND GRATE	EACH	1
60238700	INLETS, TYPE A, WITH SPECIAL FRAME AND GRATE	EACH	8
67100100	MOBILIZATION	L SUM	1
70103700	TRAFFIC CONTROL COMPLETE	L SUM	1
72000100	SIGN PANEL - TYPE 1	SQ FT	8
72800100	TELESCOPING STEEL SIGN SUPPORT	FOOT	30
* 78001130	PAINT PAVEMENT MARKING - LINE 6"	FOOT	260
* 78001180	PAINT PAVEMENT MARKING - LINE 24"	FOOT	41
* X0322468	GAS VALVE TO BE ADJUSTED	EACH	1
XX002804	STORM SEWERS, PVC 12" (SPECIAL)	FOOT	23
XX003653	SPECIAL STRUCTURE SP-1	EACH	1

FILE NAME = X:\PE\12\2008\0803\01\001\plan\08_02-H-GENERAL_NOTES & SUMMARY OF QUANTITIES.dgn



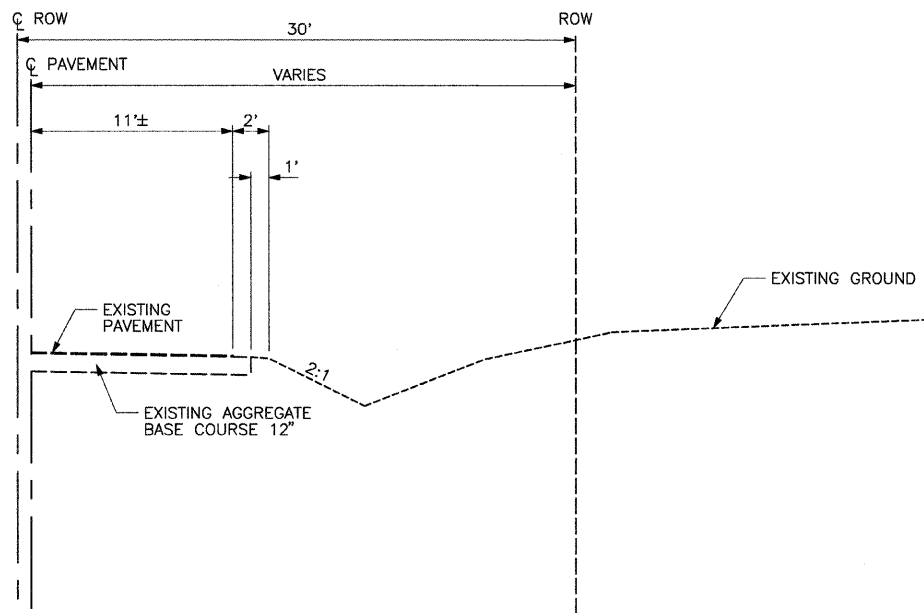
USER NAME = cx1	DESIGNED -	REVISED -
	DRAWN -	REVISED -
PLOT SCALE = 1.00' / IN.	CHECKED -	REVISED -
PLOT DATE = 4/7/2009	DATE -	REVISED -

**STATE OF ILLINOIS
DEPARTMENT OF TRANSPORTATION**

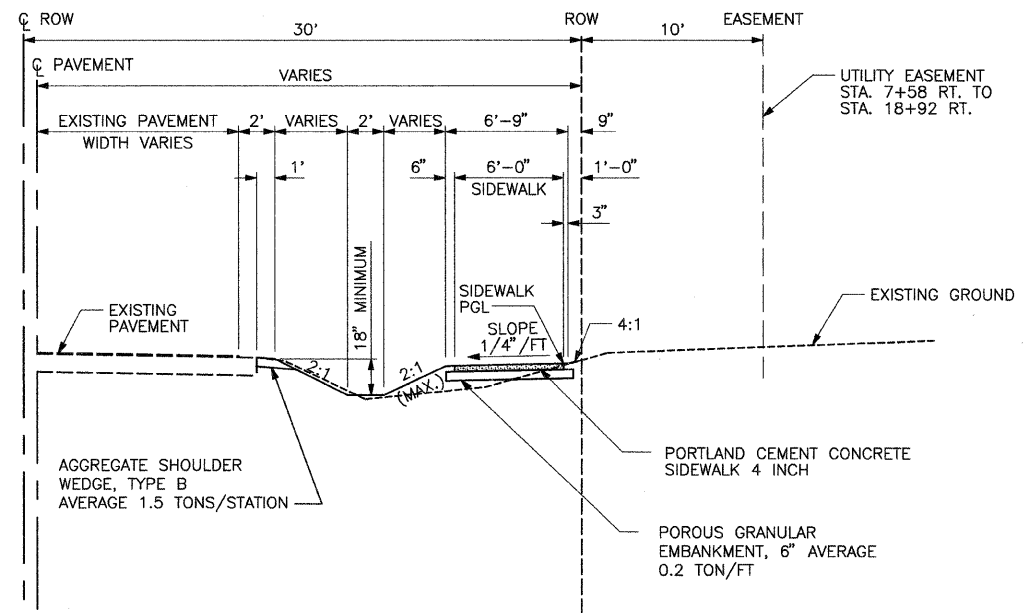
**GENERAL NOTES AND
SUMMARY OF QUANTITIES**

SCALE: SHEET NO. OF SHEETS STA. TO STA.

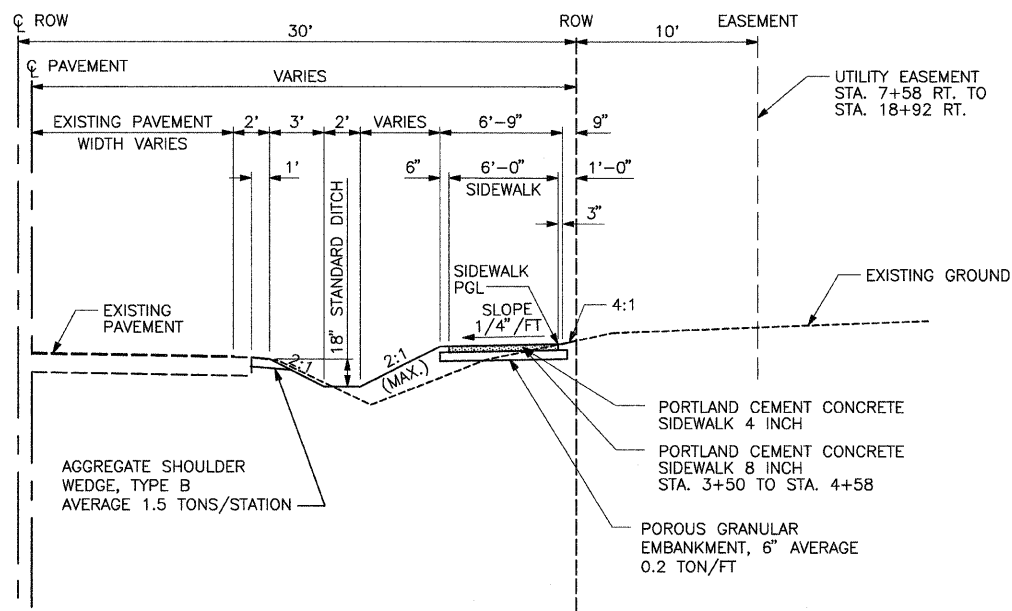
F.A. RTE.	SECTION	COUNTY	TOTAL SHEETS	SHEET NO.
	08-0000-00-SW	WOODFORD	21	3
ILLINOIS FED. AID PROJECT			CONTRACT NO. 89503	



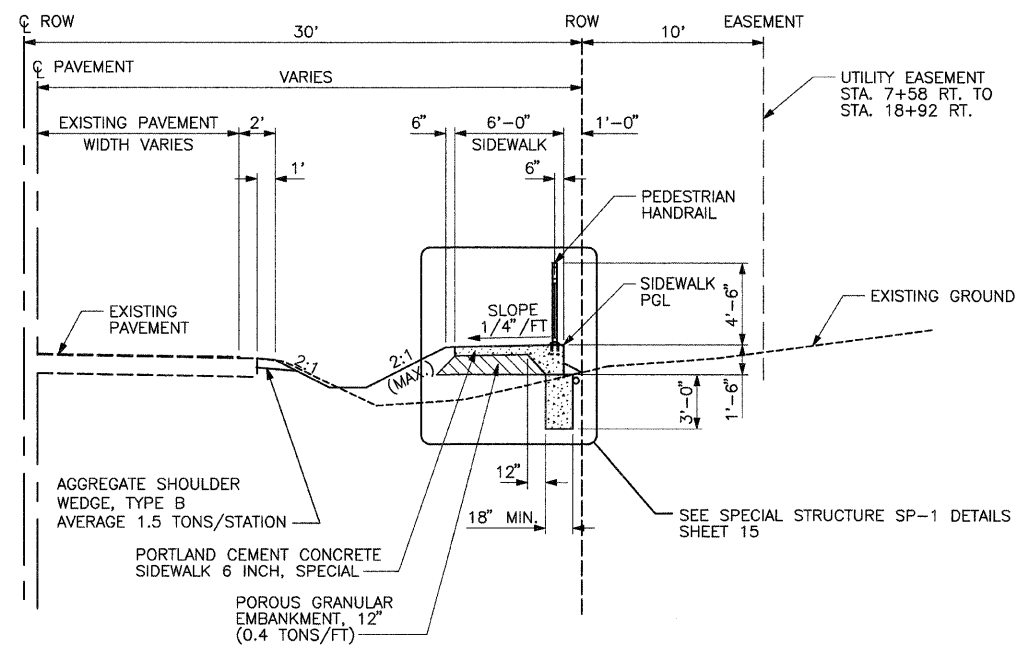
EXISTING TYPICAL SECTION
(LOOKING NORTH)



TYPICAL SECTION WITH SPECIAL DITCH
 STA. 1+62 RT. TO STA. 2+00 RT. (DITCH TRANSITION TO EXISTING)
 STA. 5+50 RT. TO STA. 8+00 RT.
 STA. 10+50 RT. TO STA. 11+08 RT.
 STA. 11+70 RT. TO STA. 12+50 RT.
 STA. 13+00 RT. TO STA. 15+00 RT.
 STA. 15+26 RT. TO STA. 16+50 RT.
 STA. 17+50 RT. TO STA. 17+60 RT.
 STA. 17+80 RT. TO STA. 19+90 RT.



TYPICAL SECTION WITH STANDARD DITCH
 STA. 2+00 RT. TO STA. 5+50 RT.
 STA. 8+00 RT. TO STA. 10+50 RT.
 STA. 12+50 RT. TO STA. 13+00 RT.
 STA. 15+00 RT. TO STA. 15+26 RT.
 STA. 16+50 RT. TO STA. 17+50 RT.



TYPICAL SECTION WITH SPECIAL SIDEWALK
 STA. 11+08 RT. TO STA. 11+37 RT. (DITCH TRANSITION TO EXISTING)
 STA. 11+53 RT. TO STA. 11+70 RT.
 STA. 17+60 RT. TO STA. 17+80 RT.
 STA. 19+90 RT. TO STA. 20+36 RT. (DITCH TRANSITION TO EXISTING)

FILE NAME = X:\P\121_2008\080202.dwg
 X:\P\121_2008\080202.dwg\03-01-TYPICAL SECTIONS.dgn



USER NAME = cxi
 PLOT SCALE = 5/8" = 1' IN.
 PLOT DATE = 4/7/2009

DESIGNED -	REVISED -
DRAWN -	REVISED -
CHECKED -	REVISED -
DATE -	REVISED -

STATE OF ILLINOIS
DEPARTMENT OF TRANSPORTATION

TYPICAL SECTIONS	
SCALE:	SHEET NO. OF SHEETS STA. TO STA.

F.A. RTE.	SECTION	COUNTY	TOTAL SHEETS	SHEET NO.
	08-00000-00-SW	WOODFORD	21	4
CONTRACT NO. 89503				
ILLINOIS FED. AID PROJECT				

LANDSCAPING SCHEDULE				SEEDING, CLASS 2A	NITROGEN FERTILIZER NUTRIENT	PHOSPHOROUS FERTILIZER NUTRIENT	POTASSIUM FERTILIZER NUTRIENT	MULCH, METHOD 1
LOCATION	LENGTH	WIDTH	ACRE	POUND	POUND	POUND	ACRE	
STA. 1+08.00 TO 2+89.30	181.3	11.0	0.05	4.12	4.12	4.12	0.05	
STA. 3+04.30 TO 7+06.70	402.4	11.0	0.10	9.15	9.15	9.15	0.10	
STA. 7+36.70 TO 11+08.00	371.3	11.0	0.09	8.44	8.44	8.44	0.09	
STA. 11+94.00 TO 15+67.00	373	11.0	0.09	8.48	8.48	8.48	0.09	
STA. 16+24.00 TO 19+90.00	366	11.0	0.09	8.32	8.32	8.32	0.09	
TOTAL			0.50	39.0	39.0	39.0	0.50	

PORTLAND CEMENT CONCRETE SIDEWALK 4 INCH						
LOCATION	LENGTH	WIDTH	SQ FT			
STA. 1+08.00 TO 2+89.30	181.3	* 6.0	1087.8			
STA. 3+04.30 TO 3+50.00	45.7	* 6.0	274.2			
STA. 4+58.00 TO 7+06.70	248.7	* 6.0	1492.2			
STA. 7+36.70 TO 11+08.00	371.3	* 6.0	2227.8			
STA. 11+94.00 TO 15+67.00	373.0	* 6.0	2238.0			
STA. 16+24.00 TO 17+60.00	136.0	* 6.0	816.0			
STA. 17+80.00 TO 19+90.00	210.0	* 6.0	1260.0			
STA. 2+00.00 TO 2+10.00	10.0	* 17.0	170.0			
TOTAL			9566.0			

PORTLAND CEMENT CONCRETE SIDEWALK 6 INCH, SPECIAL						
LOCATION	LENGTH	WIDTH	SQ FT			
STA. 11+08.00 TO 11+37.00	29.0	* 6.0	174.0			
STA. 11+53.00 TO 11+70.00	17.0	* 6.0	102.0			
STA. 17+60.00 TO 17+80.00	20.0	* 6.0	120.0			
STA. 19+90.00 TO 20+36.00	46.0	* 6.0	276.0			
TOTAL			672.0			

PORTLAND CONCRETE CEMENT SIDEWALK, 8 INCH						
LOCATION	LENGTH	WIDTH	SQ FT			
STA. 3+50.00 TO 4+58.00	108.00	* 6.0	648.0			
TOTAL			648.0			

PCC DRIVEWAY				PVM'T, 8 INCH		PVM'T PATCH (FD)	
LOCATION	WIDTH	SQ YD	SQ YD	SQ YD	SQ YD		
STA. 2+96.80 RT.	15.0	38.0	1.7				
STA. 7+21.70 RT.	30.0	68.0	3.3				
STA. 11+82.00 RT.	24.0	80.0	2.7				
TOTAL		186.0	8.0				

AGGREGATE WEDGE SHOULDER, TYPE B					
LOCATION	LENGTH	WIDTH	TONS		
STA. 1+08.00 TO 2+89.30	181.3	2.0	5.4		
STA. 3+04.30 TO 7+06.70	402.4	2.0	12.1		
STA. 7+36.70 TO 11+08.00	371.3	2.0	11.1		
STA. 11+94.00 TO 15+67.00	373	2.0	11.2		
STA. 16+24.00 TO 19+90.00	366	2.0	11.0		
TOTAL		1694	51.0		

TREE REMOVAL (OVER 15 UNITS DIAMETER)		
LOCATION	UNITS	
STA. 3+25.00 , 25.0 RT.	24	
TOTAL		24

CONCRETE RETAINING WALL REMOVAL		
LOCATION	FOOT	
STA. 17+70.60 , 23.7 RT. TO 17+82.20 , 23.7 RT.	11.6	
TOTAL		11.6

SIGN PANEL - TYPE 1		
LOCATION	SQ FT	
W11A-2 - STA. 0+50	4	
W11A-2 - STA. 4+50	4	
TOTAL		8

TELESCOPING STEEL SIGN SUPPORT		
LOCATION	FOOT	
W11A-2 - STA. 0+50	15	
W11A-2 - STA. 4+50	15	
TOTAL		30

PEDESTRIAN RAILING		
LOCATION	FOOT	
STA. 3+50.00 , 28.5' RT. TO 4+58.00 , 28.5' RT.	108.0	
STA. 3+50.00 , 23.5' RT. TO 4+58.00 , 23.5' RT.	108.0	
STA. 11+08.00 , 28.5' RT. TO 11+37.00 , 28.5' RT.	29.0	
STA. 11+37.00 , 28.5' RT. TO 11+53.00 , 28.5' RT.	16.0	
STA. 11+53.00 , 28.5' RT. TO 11+58.00 , 28.5' RT.	5.0	
TOTAL		266

SPECIAL STRUCTURE SP-1		
LOCATION	EACH	
STA. 11+37.00 TO 11+53.00	1	
TOTAL		1

TRAFFIC CONTROL COMPLETE		
LOCATION	L SUM	
JOBSITE	1	
TOTAL		1

MOBILIZATION		
LOCATION	L SUM	
JOBSITE	1	
TOTAL		1

DETECTABLE WARNINGS		
LOCATION	SQ FT	
STA. 15+67±, RT.	8	
STA. 16+24±, RT.	8	
STA. 20+36±, RT.	8	
TOTAL		24

PAINT PAVEMENT MARKING - LINE 24"		
LOCATION	FOOT	
STA. 15+94.50 , 34.5 RT. TO 16+17.50 , 34.5 RT.	23.0	
STA. 20+54.50 , 34.5 RT. TO 20+72.30 , 34.5 RT.	17.8	
TOTAL		41.0

PAINT PAVEMENT MARKING - LINE 6"		
LOCATION	FOOT	
STA. 1+99.70 , 6.2 RT. TO 1+99.70 , 19.2 LT.	25.4	
STA. 2+10.20 , 6.3 RT. TO 2+10.20 , 19.1 LT.	25.4	
STA. 15+67.00 , 29.3 RT. TO 16+23.00 , 29.3 RT.	56.0	
STA. 15+64.20 , 22.8 RT. TO 16+28.40 , 22.8 RT.	64.2	
STA. 20+30.80 , 22.8 RT. TO 20+80.80 , 22.8 RT.	50.0	
STA. 20+35.80 , 29.3 RT. TO 20+74.60 , 29.3 RT.	38.8	
TOTAL		260.0

FILE NAME = X:\PROJECTS\2009\080002\01\cand\P\enn\05_02_M-SCHEDULE OF QUANTITIES.dgn



USER NAME = cxi	DESIGNED -	REVISED -
PLOT SCALE = 1/8" = 1' IN.	DRAWN -	REVISED -
PLOT DATE = 4/7/2009	CHECKED -	REVISED -
	DATE -	REVISED -

STATE OF ILLINOIS
DEPARTMENT OF TRANSPORTATION

SCHEDULE OF
QUANTITIES

SCALE: SHEET NO. OF SHEETS STA. TO STA.

F.A. RTE.	SECTION	COUNTY	TOTAL SHEETS	SHEET NO.
	08-00000-00-SW	WOODFORD	21	6
ILLINOIS FED. AID PROJECT			CONTRACT NO. 89503	

SCHEDULE OF CONTROL POINTS

CONTROL POINT	NORTHING	EASTING	ELEVATION	STATION	OFFSET	DESCRIPTION
C.P.#1	1495072.582	2490431.290	770.089	8+53.9	29.7' RT.	FOUND I.P. AT PROPERTY CORNER
C.P.#2	1495180.548	2490429.429	766.640	9+61.9	29.7' RT.	FOUND I.P. AT PROPERTY CORNER
C.P.#3	1495613.721	2490422.082	-	13+95.2	28.3' RT.	FOUND I.P. AT PROPERTY CORNER
C.P.#4	1495760.947	2490419.584	-	15+42.6	28.4' RT.	FOUND I.P. AT PROPERTY CORNER

ADA SIDEWALK CHART

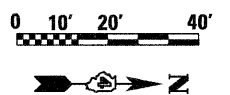
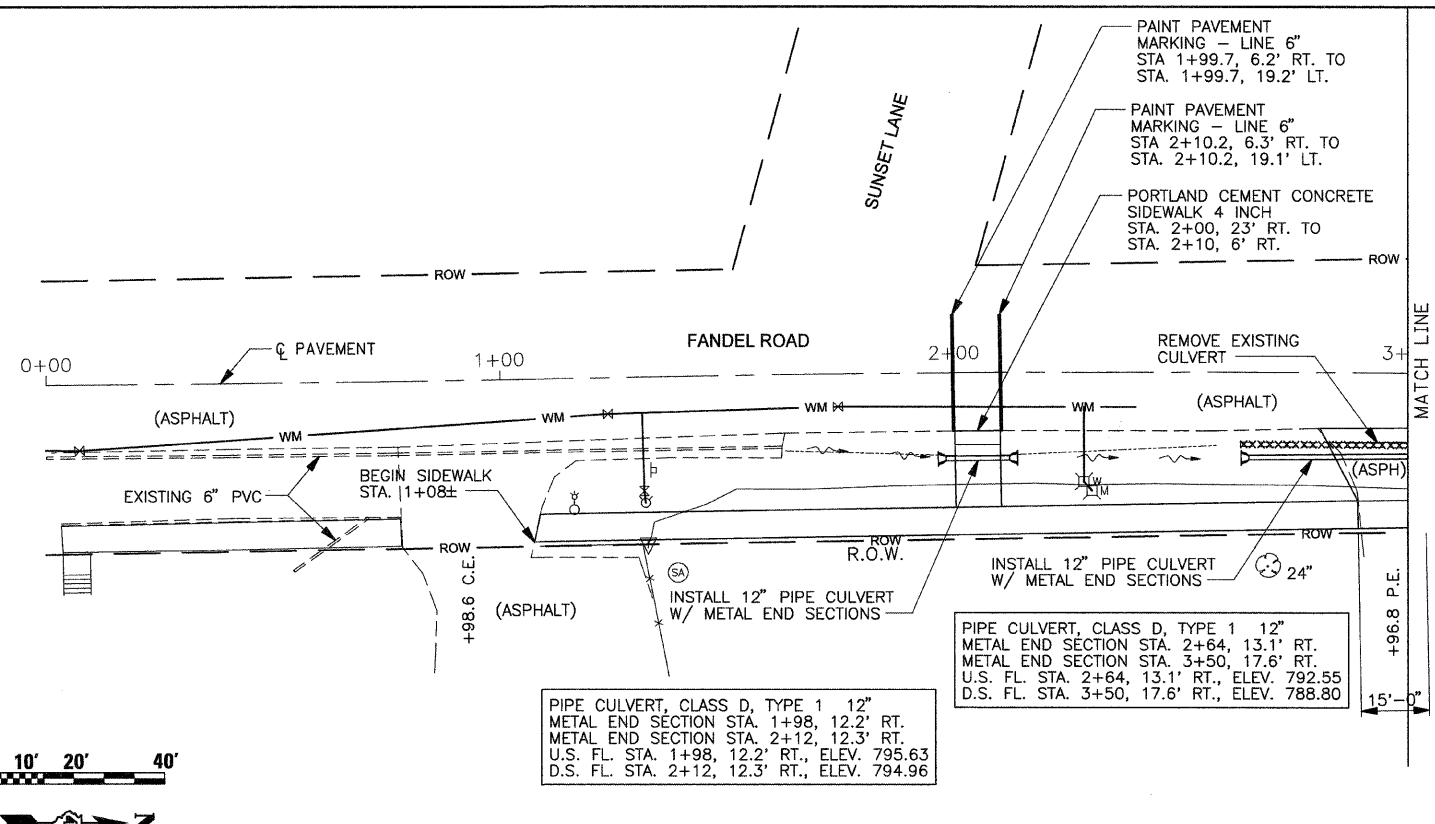
STA.	ELEV.	SLOPE
1+50.00	801.10	
		-5.00%
2+00.00	798.60	
		-4.00%
2+50.00	796.60	
		-4.80%
3+00.00	794.20	



W11A-2 - 24X24 WITH TELESCOPING SIGN SUPPORT
STA. -0+50, RT.
FIELD ADJUST LOCATION AS NECESSARY

BENCH MARK

2074	NW CAP BOLT FIRE HYDRANT SE QUAD FANDEL ROAD AND HANNAH ROAD ELEVATION 778.43
204	NORTH CAP BOLT FIRE HYDRANT SW QUAD FANDEL ROAD ELEVATION 765.05



PIPE CULVERT, CLASS D, TYPE 1 12"
METAL END SECTION STA. 1+98, 12.2' RT.
METAL END SECTION STA. 2+12, 12.3' RT.
U.S. FL. STA. 1+98, 12.2' RT., ELEV. 795.63
D.S. FL. STA. 2+12, 12.3' RT., ELEV. 794.96

PIPE CULVERT, CLASS D, TYPE 1 12"
METAL END SECTION STA. 2+64, 13.1' RT.
METAL END SECTION STA. 3+50, 17.6' RT.
U.S. FL. STA. 2+64, 13.1' RT., ELEV. 792.55
D.S. FL. STA. 3+50, 17.6' RT., ELEV. 788.80

PLAN

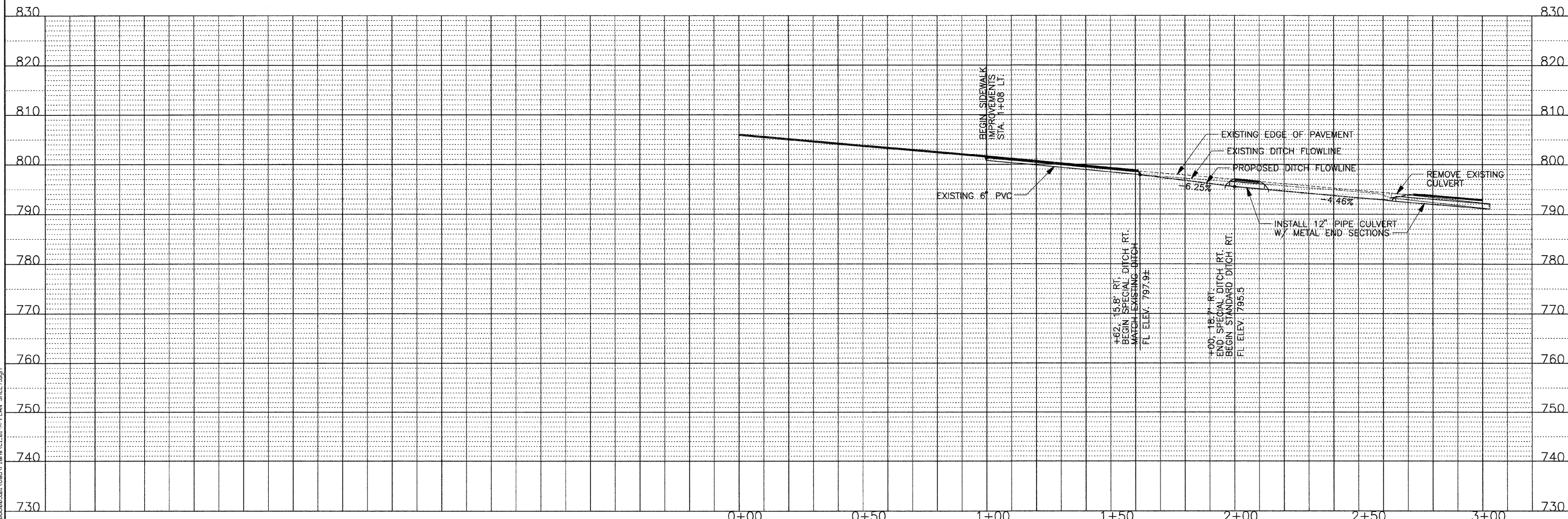
DATE	BY

SURVEYED
 ALIGNED
 CHECKED
 NOTE BOOK
 PLOTTED
 FILE NAME
 NO.

PROFILE

DATE	BY

SURVEYED
 GRADES CHECKED
 NOTE BOOK
 STRUCTURE NOTATIONS CHECKED
 NO.



USER NAME = ex1	DESIGNED -	REVISED -
PLOT SCALE = 20,000' / IN.	DRAWN -	REVISED -
PLOT DATE = 4/7/2009	CHECKED -	REVISED -
	DATE -	REVISED -

**STATE OF ILLINOIS
DEPARTMENT OF TRANSPORTATION**

**PLAN & PROFILE
STA 0+00 TO STA 3+00**

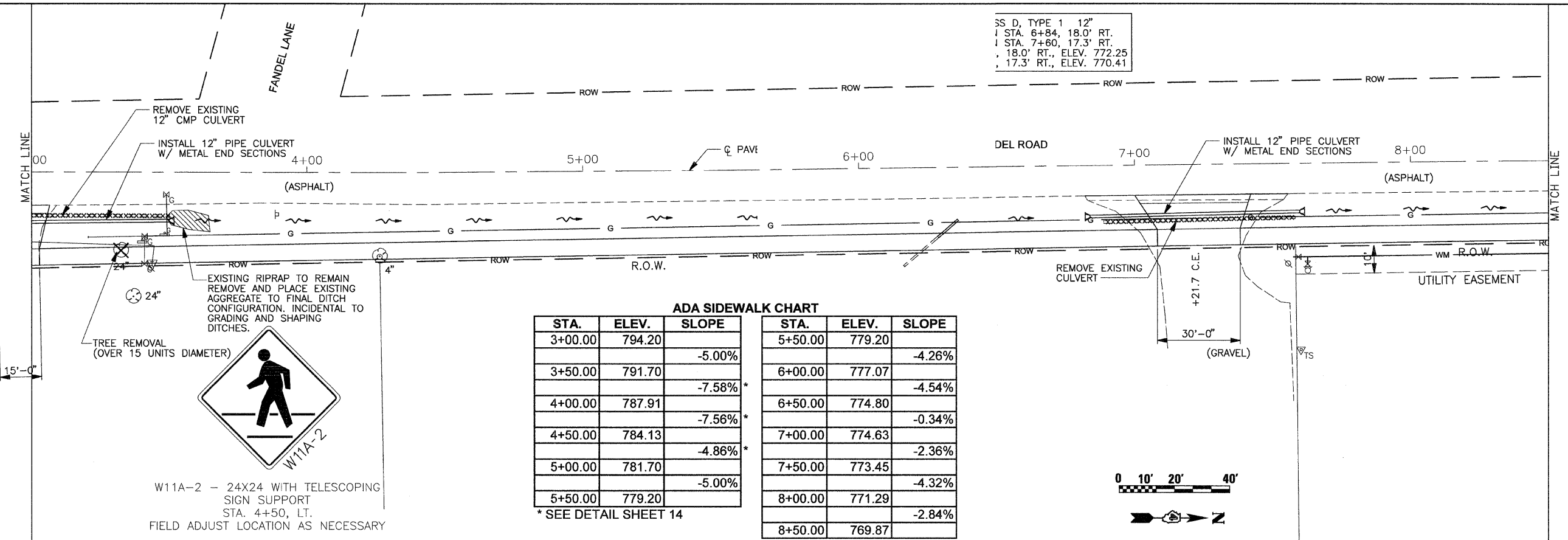
SCALE:	SHEET NO.	OF SHEETS	STA.	TO STA.

F.A. RTE.	SECTION	COUNTY	TOTAL SHEETS	SHEET NO.
	08-00000-00-SW	WOODFORD	21	7

CONTRACT NO. 89503
ILLINOIS FED. AID PROJECT

FILE NAME: K:\PE\12\2008\89503\01\cond\plan\plan.dgn
 SHEET: 7

SS D, TYPE 1 12"
 I STA. 6+84, 18.0' RT.
 I STA. 7+60, 17.3' RT.
 I 18.0' RT., ELEV. 772.25
 I 17.3' RT., ELEV. 770.41



ADA SIDEWALK CHART

STA.	ELEV.	SLOPE	STA.	ELEV.	SLOPE
3+00.00	794.20		5+50.00	779.20	-4.26%
3+50.00	791.70	-5.00%	6+00.00	777.07	-4.54%
4+00.00	787.91	-7.58%*	6+50.00	774.80	-0.34%
4+50.00	784.13	-7.56%*	7+00.00	774.63	-2.36%
5+00.00	781.70	-4.86%*	7+50.00	773.45	-4.32%
5+50.00	779.20	-5.00%	8+00.00	771.29	-2.84%
			8+50.00	769.87	

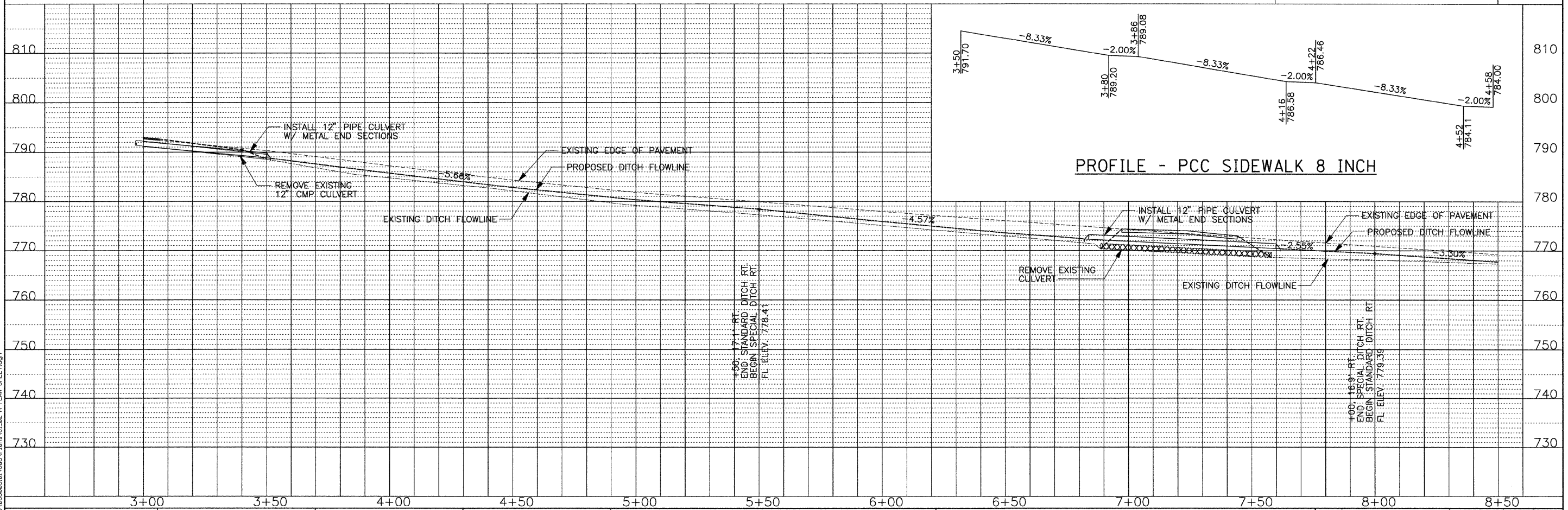
* SEE DETAIL SHEET 14

PLAN

DATE	
BY	
SURVEYED	
ALIGNED	
CHECKED	
NO.	

PROFILE

DATE	
BY	
SURVEYED	
GRADES	
CHECKED	
NO.	

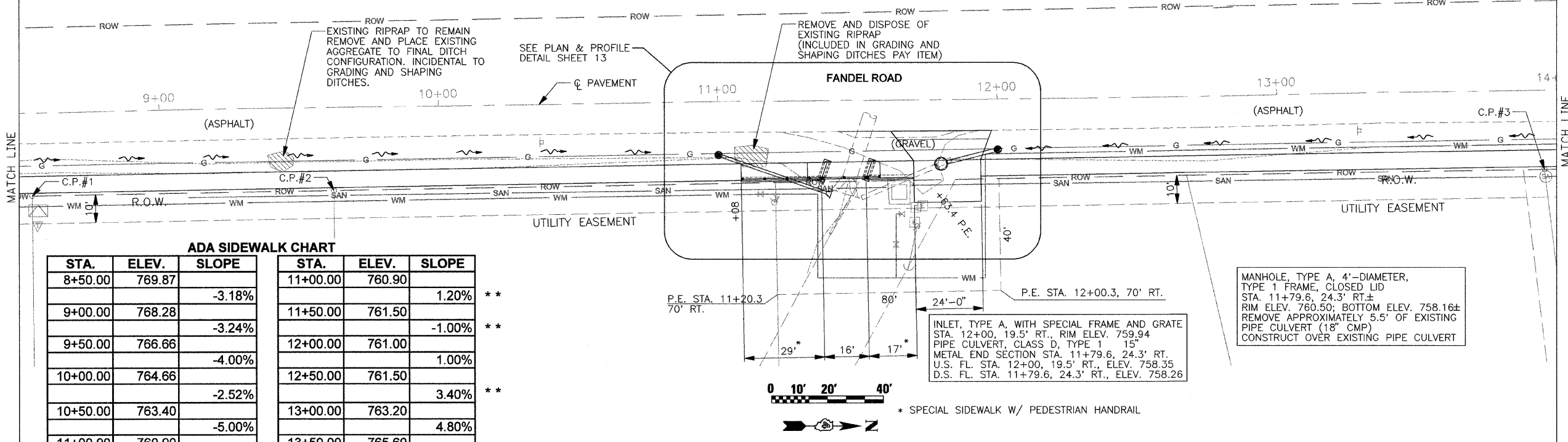


PLAN SURVEYED BY DATE
 PLOTTED BY DATE
 CHECKED BY DATE
 RT. OF WAY CHECKED BY DATE
 NO. CAD FILE NAME

PROFILE SURVEYED BY DATE
 PLOTTED BY DATE
 CHECKED BY DATE
 STRUCTURE NOTATIONS CP10
 NO. DATE

INLET, TYPE A, WITH SPECIAL FRAME AND GRATE
 STA. 11+00, 19.7' RT., RIM ELEV. 759.74
 PIPE CULVERT, CLASS D, TYPE 1 12"
 METAL END SECTION STA. 11+38.3, 33.9' RT.
 U.S. FL. STA. 11+00, 19.7' RT., ELEV. 758.24
 D.S. FL. STA. 11+38.3, 32.9' RT., ELEV. 756.79

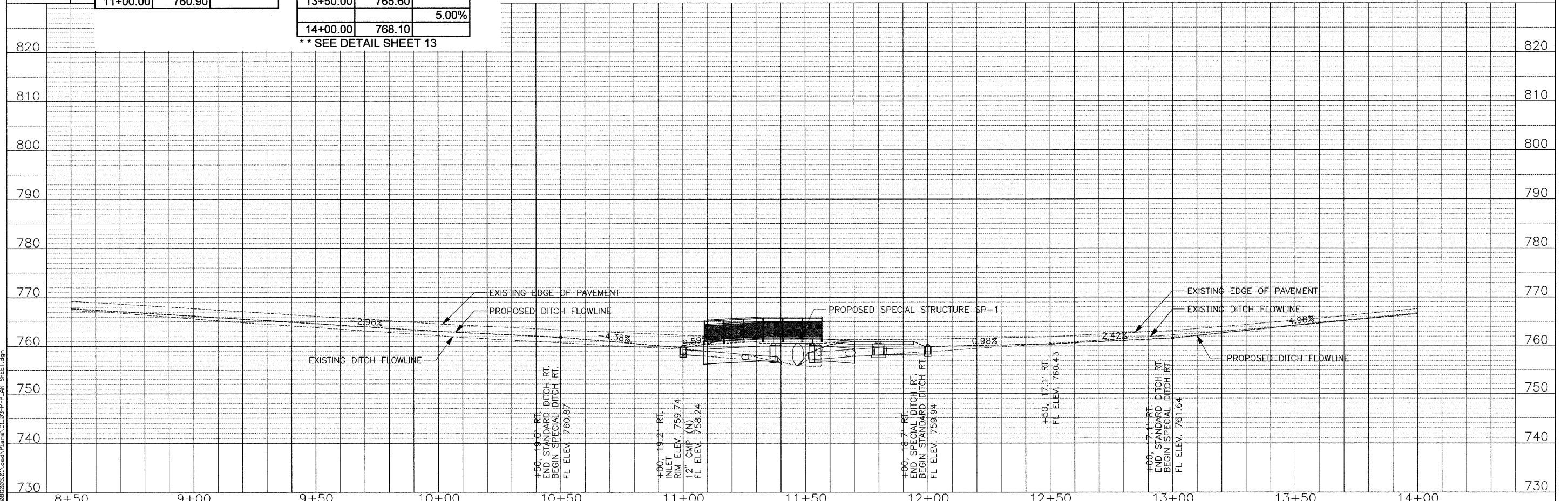
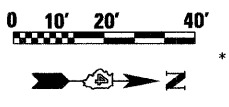
MANHOLE, TYPE A, 4'-DIAMETER,
 TYPE 1 FRAME, CLOSED LID
 STA. 11+79.6, 24.3' RT.±
 RIM ELEV. 760.50; BOTTOM ELEV. 758.16±
 REMOVE APPROXIMATELY 5.5' OF EXISTING
 PIPE CULVERT (18" CMP)
 CONSTRUCT OVER EXISTING PIPE CULVERT



ADA SIDEWALK CHART

STA.	ELEV.	SLOPE	STA.	ELEV.	SLOPE
8+50.00	769.87	-3.18%	11+00.00	760.90	1.20% **
9+00.00	768.28	-3.24%	11+50.00	761.50	-1.00% **
9+50.00	766.66	-4.00%	12+00.00	761.00	1.00%
10+00.00	764.66	-2.52%	12+50.00	761.50	3.40% **
10+50.00	763.40	-5.00%	13+00.00	763.20	4.80%
11+00.00	760.90		13+50.00	765.60	5.00%
			14+00.00	768.10	

** SEE DETAIL SHEET 13



FILE NAME: X:\PEL\12\2008\080003.dwg, Plans\CL103-M-PLAN, SHEET.dgn

	USER NAME = oxl	DESIGNED -	REVISED -	STATE OF ILLINOIS DEPARTMENT OF TRANSPORTATION	PLAN & PROFILE STA 8+50 TO STA 14+00		F.A. SECTION COUNTY TOTAL SHEET NO. RTE. 08-00000-00-SW WOODFORD 21 9 CONTRACT NO. 89503
	PLOT SCALE = 20,000' / IN. PLOT DATE = 4/7/2009	DRAWN - CHECKED - DATE -	REVISED - REVISED - REVISED -		SCALE: SHEET NO. OF SHEETS STA. TO STA.	ILLINOIS FED. AID PROJECT	

PLAN SURVEYED BY DATE
 PLOTTED BY DATE
 CHECKED BY DATE
 NO. OF SHEETS CHECKED
 DATE FILE NAME

PROFILE SURVEYED BY DATE
 PLOTTED BY DATE
 CHECKED BY DATE
 NO. OF SHEETS CHECKED
 DATE FILE NAME

FILE NAME
 X:\PROJECTS\2008\080203\01\001\Plan\14+50-PLAN-SHEET.dgn

INLET, TYPE A, WITH SPECIAL FRAME AND GRATE
 STA. 15+56.0, 31.7' RT., RIM ELEV. 772.70
 PIPE CULVERT, CLASS D, TYPE 1 12"
 U.S. FL. STA. 15+56.0, 31.7' RT., ELEV. 771.20
 D.S. FL. STA. 15+26.5, 18.1' RT., ELEV. 770.71
 METAL END SECTION
 STA. 15+26.5, 18.1' RT., FL. ELEV. 770.71

FUTURE IMPROVEMENT
 INLET, TYPE A, WITH SPECIAL FRAME AND GRATE
 STA. 17+67.3, 35.0' RT., RIM ELEV. 771.90
 STORM SEWER, CLASS A, TYPE 1 12"
 U.S. FL. STA. 17+67.3, 35.0' RT., ELEV. 769.90
 D.S. FL. STA. 17+67.3, 25.0' RT., ELEV. 769.55

INLET, TYPE A, WITH SPECIAL FRAME AND GRATE
 STA. 18+50.0, 19.0' RT., RIM ELEV. 773.08
 STORM SEWER, CLASS A, TYPE 1 12"
 U.S. FL. STA. 18+50.0, 19.0' RT., ELEV. 771.08
 D.S. FL. STA. 18+50.0, 25.0' RT., ELEV. 771.03

INLET, TYPE A, WITH SPECIAL FRAME AND GRATE
 STA. 19+50.0, 19.0' RT., RIM ELEV. 774.90
 STORM SEWER, CLASS A, TYPE 1 12"
 U.S. FL. STA. 19+50.0, 19.0' RT., ELEV. 772.90
 D.S. FL. STA. 19+50.0, 25.0' RT., ELEV. 772.85

MANHOLE, TYPE A, 4'-DIAMETER,
 TYPE 1 FRAME, CLOSED LID
 STA. 18+50.0, 25.0' RT., RIM ELEV. 773.92
 STORM SEWER, CLASS A, TYPE 1 12"
 U.S. FL. STA. 18+50.0, 25.0' RT., ELEV. 770.93
 D.S. FL. STA. 17+67.3, 25.0' RT., ELEV. 769.55

MANHOLE, TYPE A, 4'-DIAMETER,
 TYPE 1 FRAME, CLOSED LID
 STA. 19+50.0, 25.0' RT., RIM ELEV. 775.61
 STORM SEWER, CLASS A, TYPE 1 12"
 U.S. FL. STA. 19+50.0, 25.0' RT., ELEV. 772.75
 D.S. FL. STA. 18+50.0, 25.0' RT., ELEV. 771.03

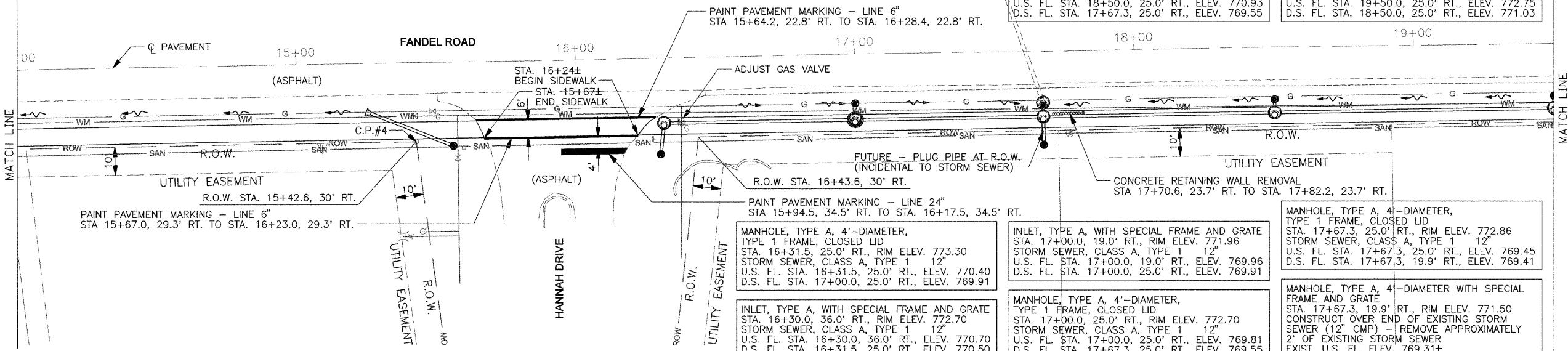
MANHOLE, TYPE A, 4'-DIAMETER,
 TYPE 1 FRAME, CLOSED LID
 STA. 16+31.5, 25.0' RT., RIM ELEV. 773.30
 STORM SEWER, CLASS A, TYPE 1 12"
 U.S. FL. STA. 16+31.5, 25.0' RT., ELEV. 770.40
 D.S. FL. STA. 17+00.0, 25.0' RT., ELEV. 769.91

INLET, TYPE A, WITH SPECIAL FRAME AND GRATE
 STA. 17+00.0, 19.0' RT., RIM ELEV. 771.96
 STORM SEWER, CLASS A, TYPE 1 12"
 U.S. FL. STA. 17+00.0, 19.0' RT., ELEV. 769.96
 D.S. FL. STA. 17+00.0, 25.0' RT., ELEV. 769.91

MANHOLE, TYPE A, 4'-DIAMETER,
 TYPE 1 FRAME, CLOSED LID
 STA. 17+67.3, 25.0' RT., RIM ELEV. 772.86
 STORM SEWER, CLASS A, TYPE 1 12"
 U.S. FL. STA. 17+67.3, 25.0' RT., ELEV. 769.45
 D.S. FL. STA. 17+67.3, 19.9' RT., ELEV. 769.41

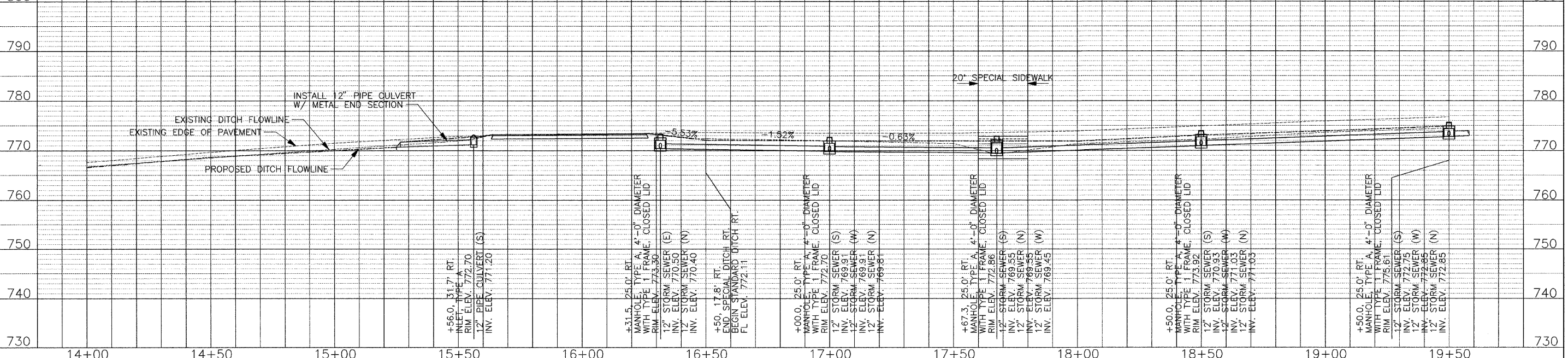
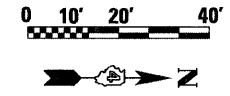
MANHOLE, TYPE A, 4'-DIAMETER,
 TYPE 1 FRAME, CLOSED LID
 STA. 17+00.0, 25.0' RT., RIM ELEV. 772.70
 STORM SEWER, CLASS A, TYPE 1 12"
 U.S. FL. STA. 17+00.0, 25.0' RT., ELEV. 769.81
 D.S. FL. STA. 17+67.3, 25.0' RT., ELEV. 769.55

MANHOLE, TYPE A, 4'-DIAMETER WITH SPECIAL
 FRAME AND GRATE
 STA. 17+67.3, 19.9' RT., RIM ELEV. 771.50
 CONSTRUCT OVER END OF EXISTING STORM
 SEWER (12" CMP) - REMOVE APPROXIMATELY
 2' OF EXISTING STORM SEWER
 EXIST. U.S. FL. ELEV. 769.31±



ADA SIDEWALK CHART

STA.	ELEV.	SLOPE	STA.	ELEV.	SLOPE
14+00.00	768.10		16+50.00	772.78	
14+50.00	769.74	3.28%	17+00.00	772.71	-0.14%
15+00.00	771.30	3.12%	17+50.00	772.81	0.20%
15+50.00	772.83	3.06%	18+00.00	772.97	0.32%
16+00.00	772.78	-0.10%	18+50.00	773.94	1.94%
16+50.00	772.71	-0.14%	19+00.00	774.79	1.70%
			19+50.00	775.61	1.64%



USER NAME = cxi
 DESIGNED -
 DRAWN -
 CHECKED -
 PLOT DATE = 4/7/2009
 REVISED -
 REVISED -
 REVISED -
 REVISED -

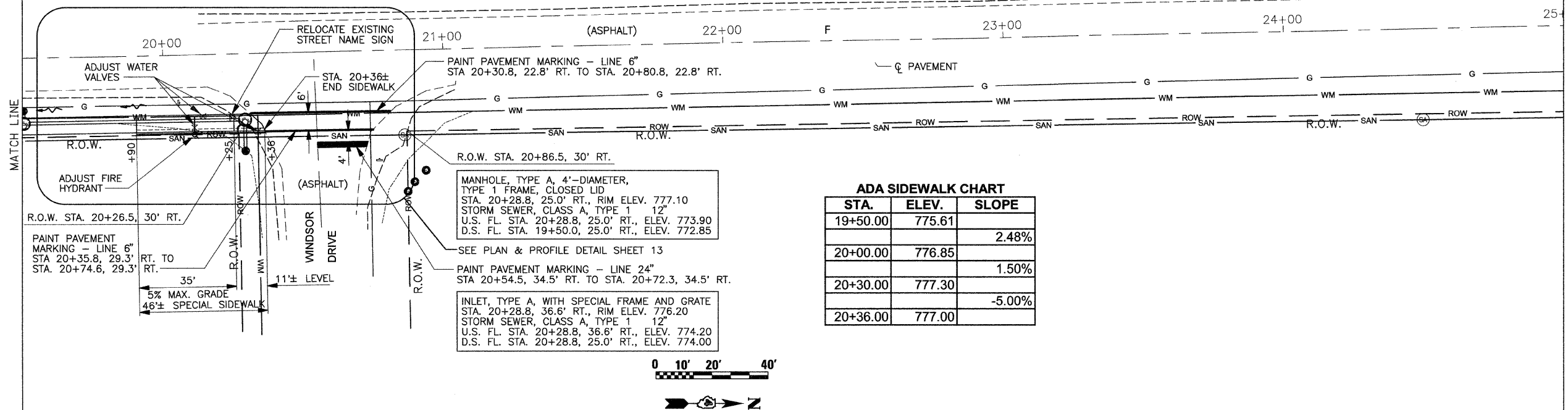
STATE OF ILLINOIS
 DEPARTMENT OF TRANSPORTATION

PLAN & PROFILE
 STA 14+50 TO STA 19+50

SECTION 08-00000-00-SW
 COUNTY WOODFORD
 TOTAL SHEETS 21
 SHEET NO. 10
 CONTRACT NO. 89503
 ILLINOIS FED. AID PROJECT

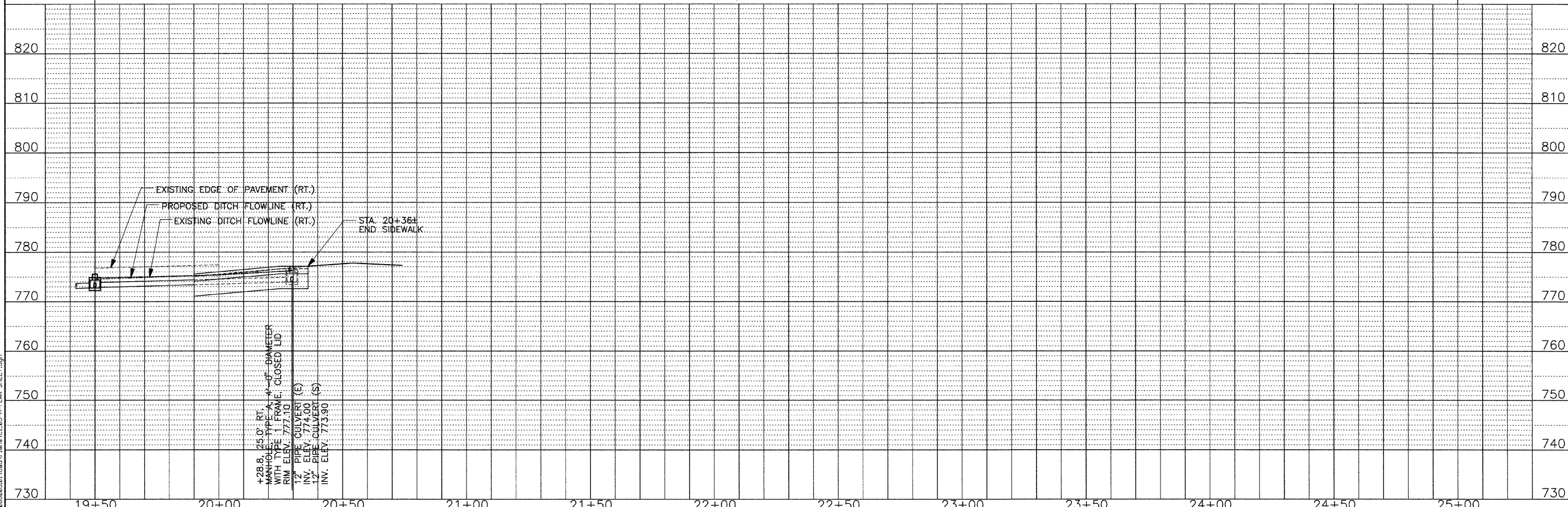
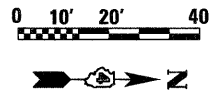


PIPE UNDERDRAIN 4"
 STA. 19+90, 29.7' RT. TO STA. 20+34, 29.7' RT.
 SLOPE TO DRAIN
 PIPE UNDERDRAIN 4" (SPECIAL)
 STA. 20+26.1, 29.7' RT. TO STA. 20+28.8, 25.0' RT.
 DISCHARGE TO MANHOLE



ADA SIDEWALK CHART

STA.	ELEV.	SLOPE
19+50.00	775.61	
20+00.00	776.85	2.48%
20+30.00	777.30	1.50%
20+36.00	777.00	-5.00%



+28.8, 25.0' RT.
 MANHOLE, TYPE A, 4'-DIAMETER
 WITH TYPE 1 FRAME, CLOSED LID
 RIM ELEV. 777.10
 12" PIPE CULVERT (E)
 INV. ELEV. 774.00
 12" PIPE CULVERT (S)
 INV. ELEV. 773.90

DATE _____ BY _____
 SURVEYED _____
 ALIGNMENT CHECKED _____
 NOTE BOOK NO. _____
 FILE NAME _____

DATE _____ BY _____
 SURVEYED _____
 GRADES CHECKED _____
 NOTE BOOK NO. _____
 STRUCTURE NOTATION _____



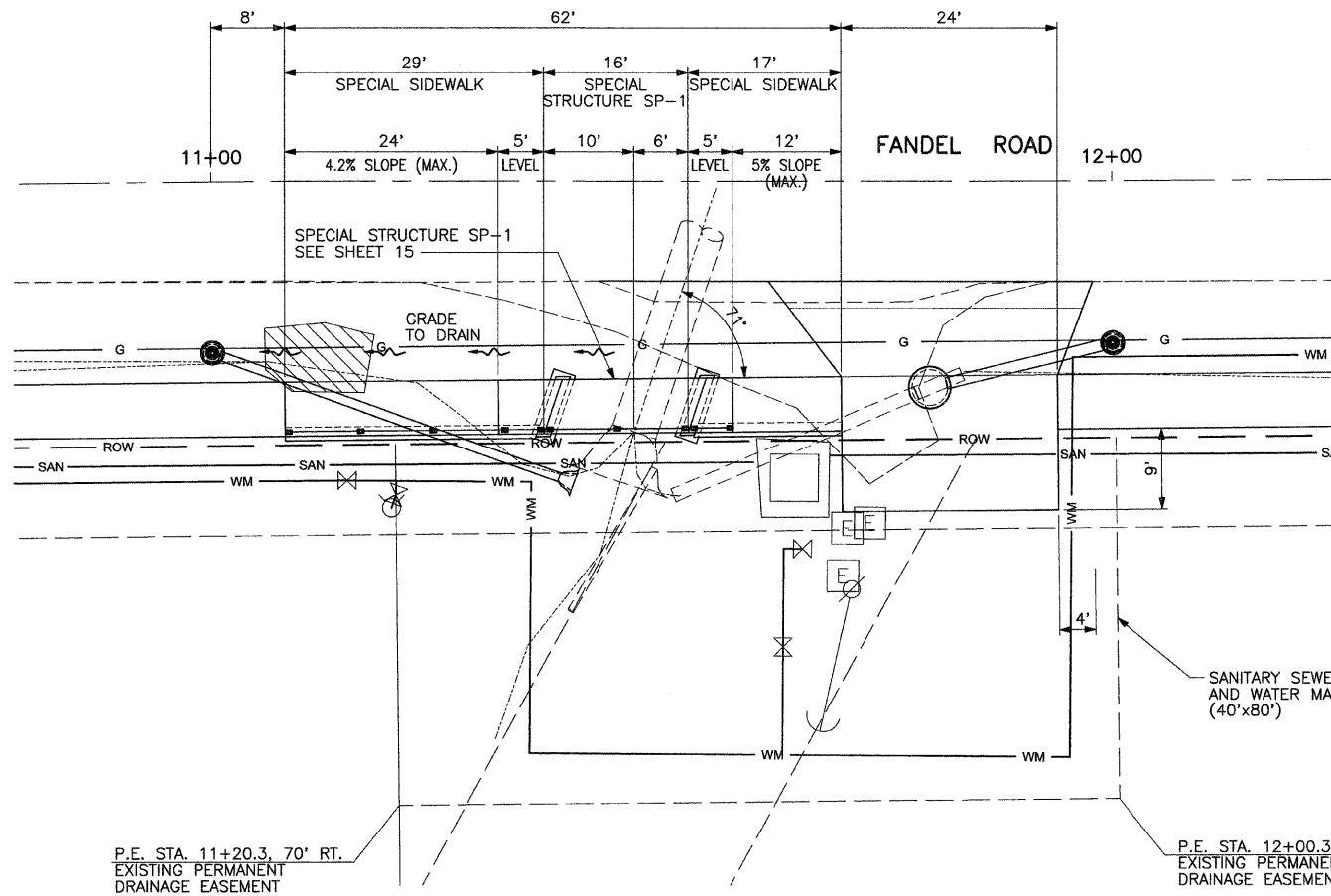
USER NAME = cxi
 PLOT SCALE = 20,000' / IN.
 PLOT DATE = 4/7/2009

DESIGNED -	REVISED -
DRAWN -	REVISED -
CHECKED -	REVISED -
DATE -	REVISED -

STATE OF ILLINOIS
 DEPARTMENT OF TRANSPORTATION

PLAN & PROFILE
 STA 19+50 TO STA 25+00
 SCALE: SHEET NO. OF SHEETS STA. TO STA.

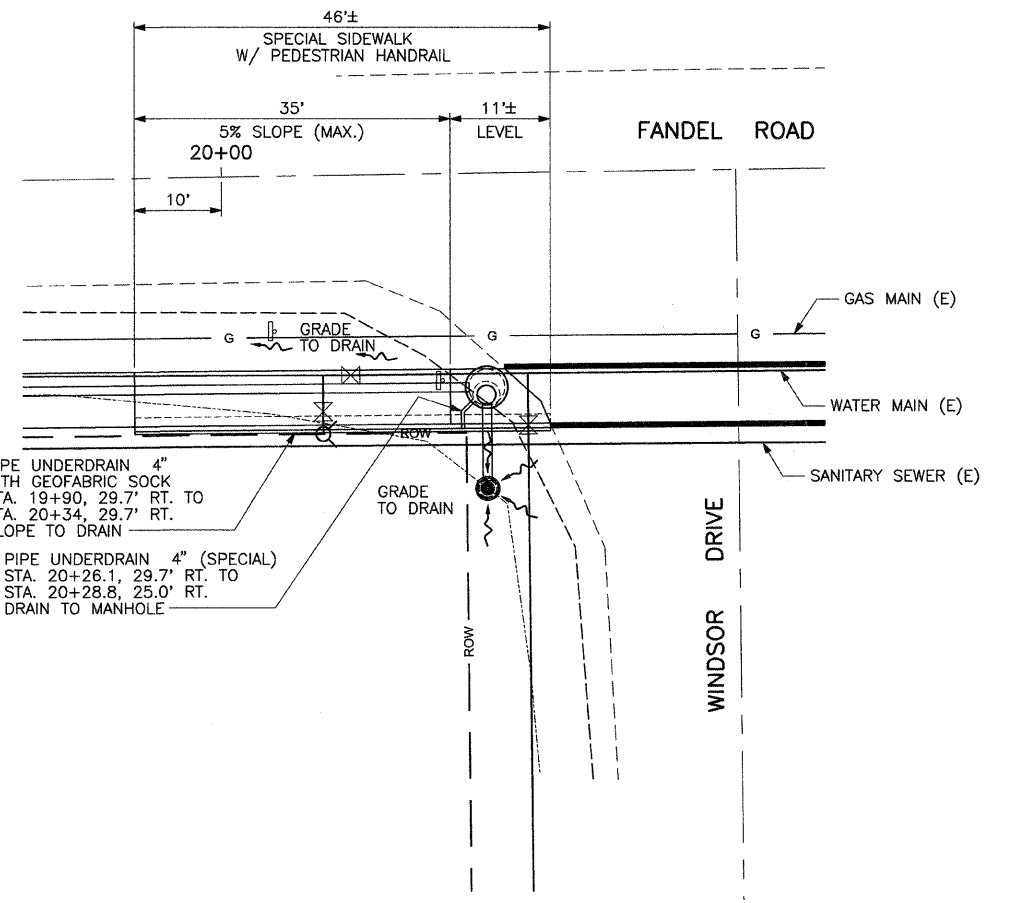
F.A. RTE.	SECTION	COUNTY	TOTAL SHEETS	SHEET NO.
	08-00000-00-SW	WOODFORD	21	11
CONTRACT NO. 89503				
ILLINOIS FED. AID PROJECT				



P.E. STA. 11+20.3, 70' RT.
EXISTING PERMANENT
DRAINAGE EASEMENT

P.E. STA. 12+00.3, 70' RT.
EXISTING PERMANENT
DRAINAGE EASEMENT

SANITARY SEWER LIFT STATION
AND WATER MAIN EASEMENT
(40'x80')

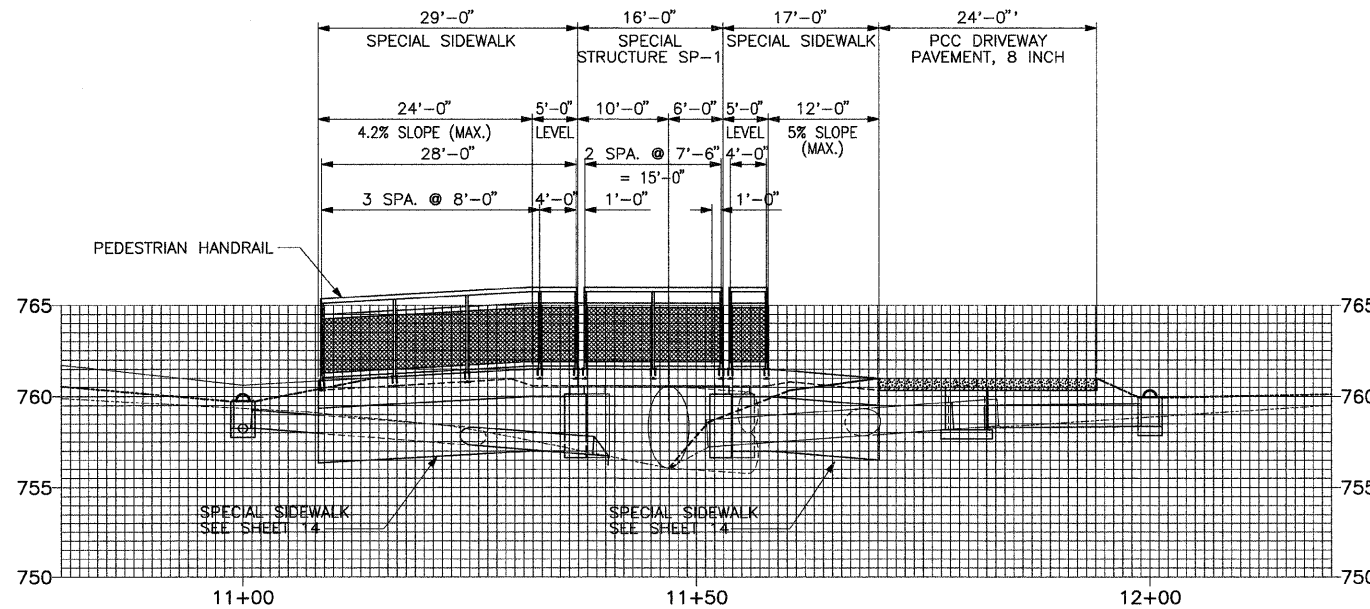


PIPE UNDERDRAIN 4" WITH GEOFABRIC SOCK STA. 19+90, 29.7' RT. TO STA. 20+34, 29.7' RT. SLOPE TO DRAIN

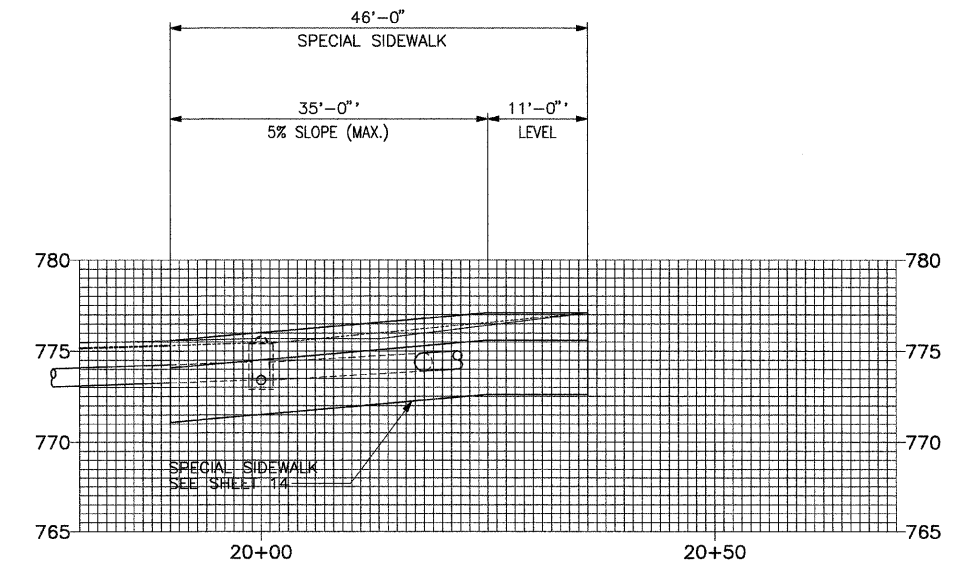
PIPE UNDERDRAIN 4" (SPECIAL) STA. 20+26.1, 29.7' RT. TO STA. 20+28.8, 25.0' RT. DRAIN TO MANHOLE

DETAIL

DETAIL



PROFILE AT RIGHT-OF-WAY LINE



PROFILE AT RIGHT-OF-WAY LINE

FILE NAME = X:\E\12_2009\080203\01\user\Plans\C4_01\PLANS & DETAILS.dgn



USER NAME = cwl	DESIGNED -	REVISD -
PLOT SCALE = 10.00' / IN.	DRAWN -	REVISD -
PLOT DATE = 4/7/2009	CHECKED -	REVISD -
	DATE -	REVISD -

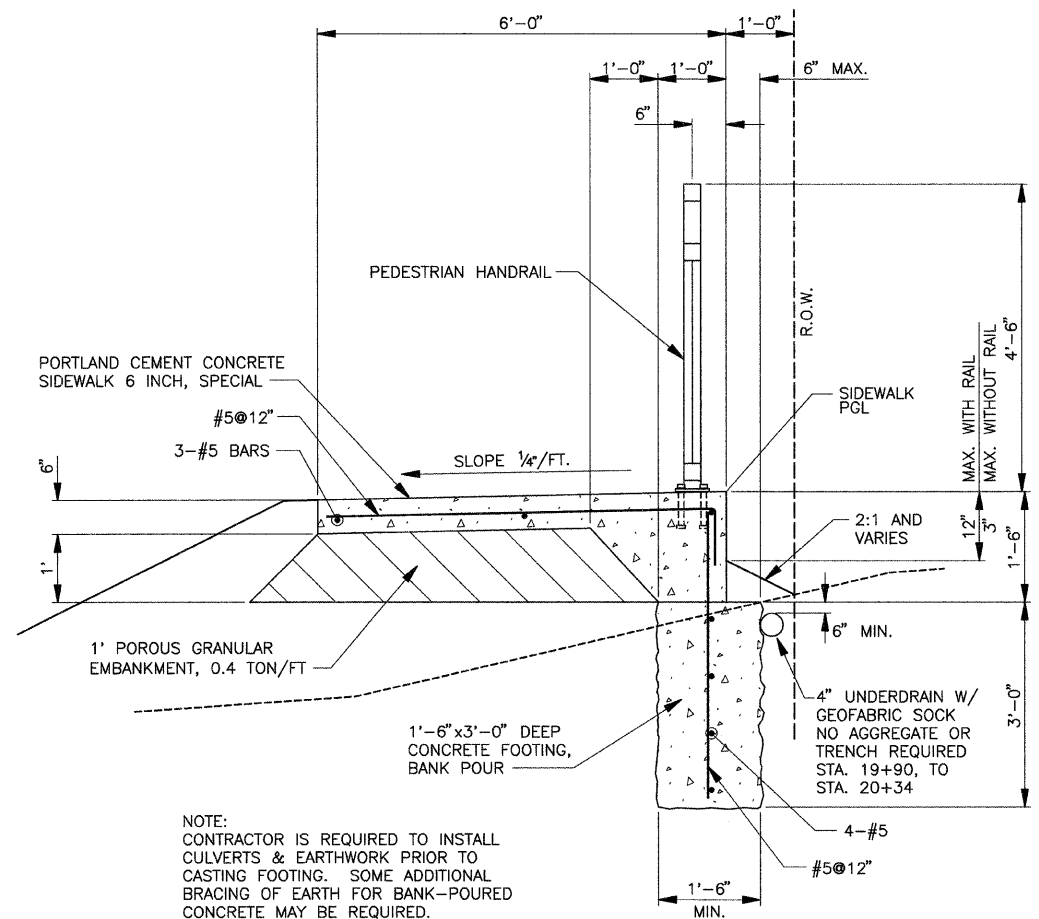
DESIGNED -	REVISD -
DRAWN -	REVISD -
CHECKED -	REVISD -
DATE -	REVISD -

**STATE OF ILLINOIS
DEPARTMENT OF TRANSPORTATION**

**PLAN & PROFILE
DETAIL SHEET**

SCALE:	SHEET NO.	OF SHEETS	STA.	TO STA.
--------	-----------	-----------	------	---------

F.A. RTE.	SECTION	COUNTY	TOTAL SHEETS	SHEET NO.
	08-00000-00-SW	WOODFORD	21	13
CONTRACT NO. 89503				
ILLINOIS FED. AID PROJECT				



NOTE:
CONTRACTOR IS REQUIRED TO INSTALL
CULVERTS & EARTHWORK PRIOR TO
CASTING FOOTING. SOME ADDITIONAL
BRACING OF EARTH FOR BANK-POURED
CONCRETE MAY BE REQUIRED.

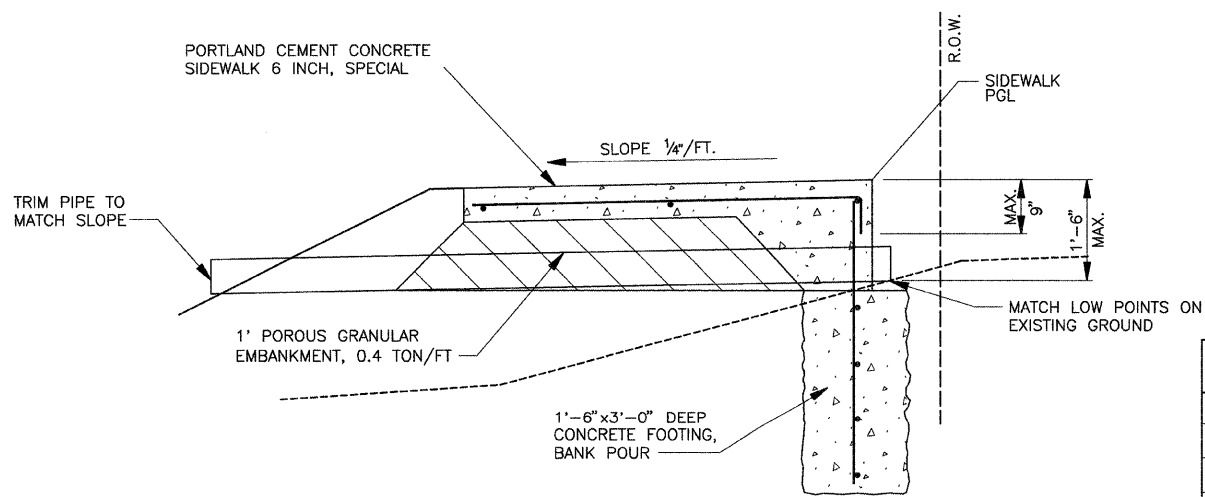
DETAIL - PCC SIDEWALK 6 INCH, SPECIAL

ALL REINFORCEMENT BARS SHALL BE EPOXY COATED

**BILL OF MATERIAL
PCC SIDEWALK 6 INCH, SPECIAL**

SEE TYPICAL SECTIONS FOR LOCATIONS

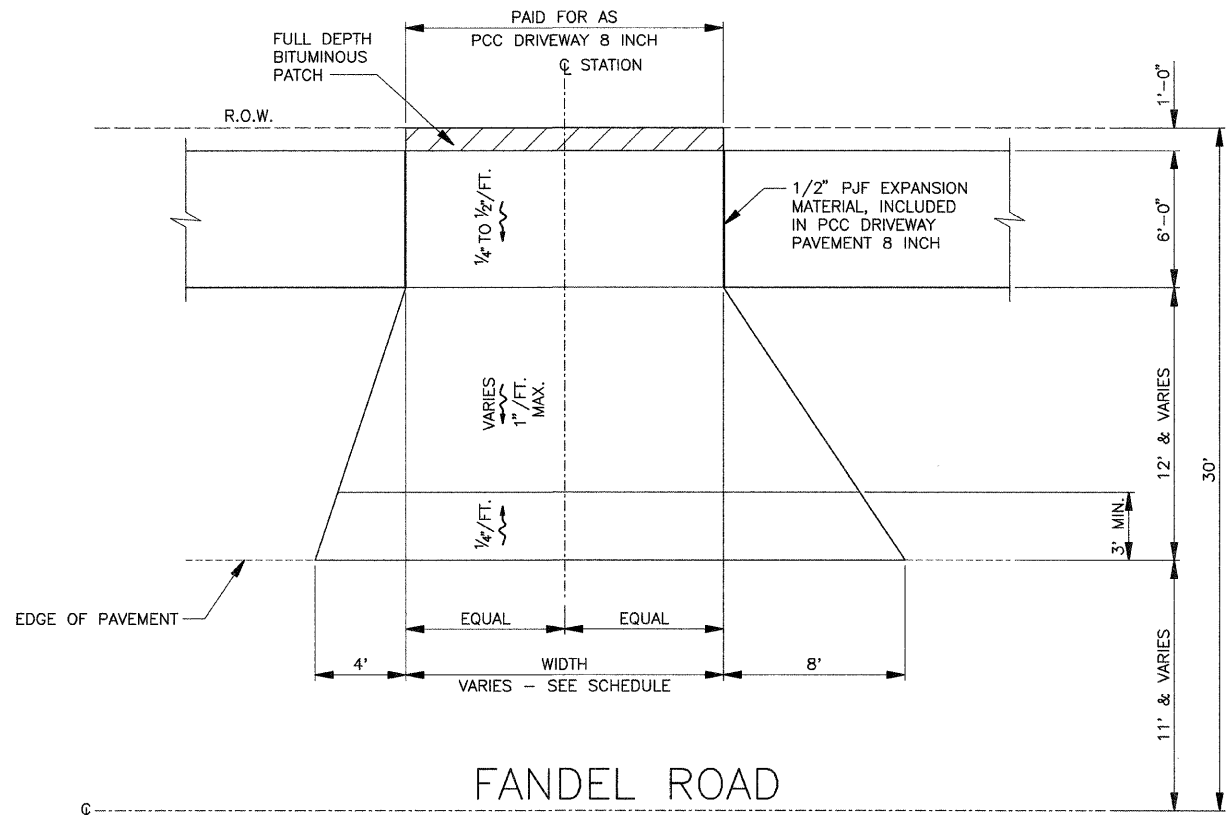
FOOTING - CONCRETE	0.17 CY/FT
FORMED CONCRETE	0.17 CY/FT
REINFORCEMENT BARS (EPOXY COATED)	5.5 LB/FT



DETAIL - PIPE DRAINS UNDER PCC SIDEWALK 6 INCH, SPECIAL

PIPE DRAINS SHALL BE INCIDENTAL TO THE COST OF PCC SIDEWALK 6 INCH, SPECIAL

PIPE DRAIN LOCATION 6"	LIN. FT.
STA. 17+65 RT.	12'
STA. 17+70 RT.	12'
STA. 19+95 RT.	12'
STA. 20+05 RT.	12'
TOTAL	48'



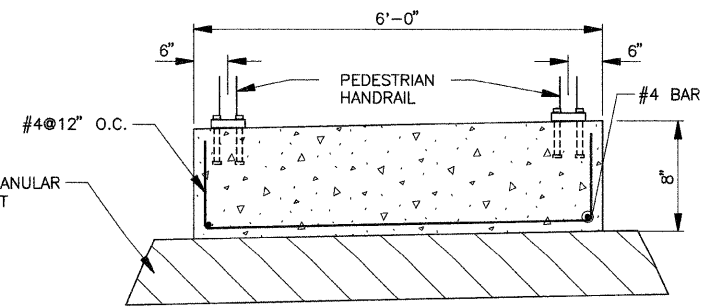
FANDEL ROAD

NOTE: SIDEWALK INCLUDED IN PRICE OF DRIVEWAY

DRIVEWAY DETAIL

DRIVEWAY SCHEDULE

DRIVEWAY LOCATION	DRIVEWAY WIDTH	PCC DRIVEWAY PAVEMENT, 8 INCH PAY AREA (SQ YD)	PAVEMENT PATCHING (FULL DEPTH) PAY AREA (SQ YD)
STA. 2+96.8 RT.	15'	38	1.7
STA. 7+21.7 RT.	30'	68	3.3
STA. 11+82 RT.	24'	80	2.7
TOTAL		186	8



DETAIL - PCC SIDEWALK 8 INCH

STA. 3+50 TO STA. 4+58

FILE NAME = X:\PELUE\2009\080903\01\0001\01\05\01-01-01-01.dgn



USER NAME = cxi
PLOT SCALE = 1/4" = 1' / IN.
PLOT DATE = 4/7/2009

DESIGNED -	REVISED -
DRAWN -	REVISED -
CHECKED -	REVISED -
DATE -	REVISED -

**STATE OF ILLINOIS
DEPARTMENT OF TRANSPORTATION**

**PCC SIDEWALK AND
DRIVEWAY DETAILS**
SCALE: SHEET NO. OF SHEETS STA. TO STA.

F.A. RTE.	SECTION	COUNTY	TOTAL SHEETS	SHEET NO.
	08-0000-00-SW	WOODFORD	21	14
CONTRACT NO. 89503				
ILLINOIS FED. AID PROJECT				

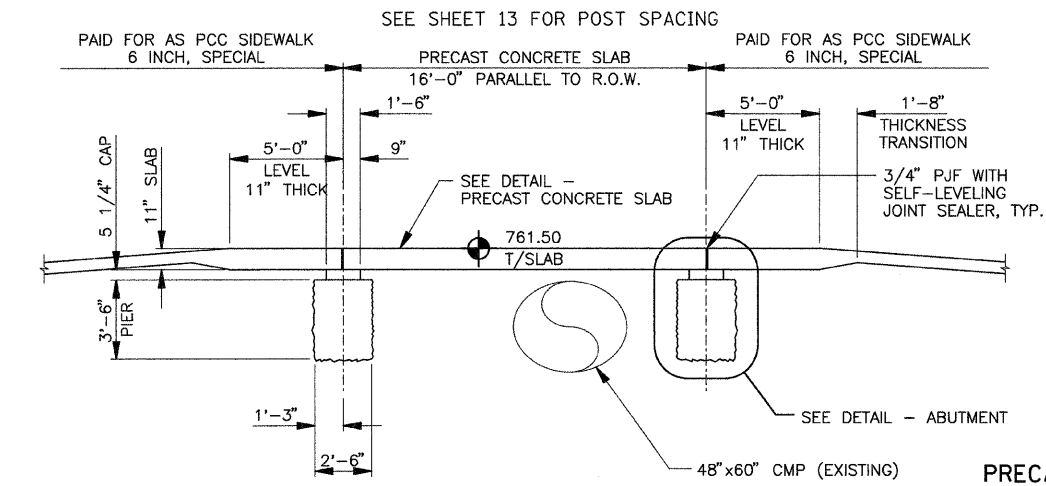
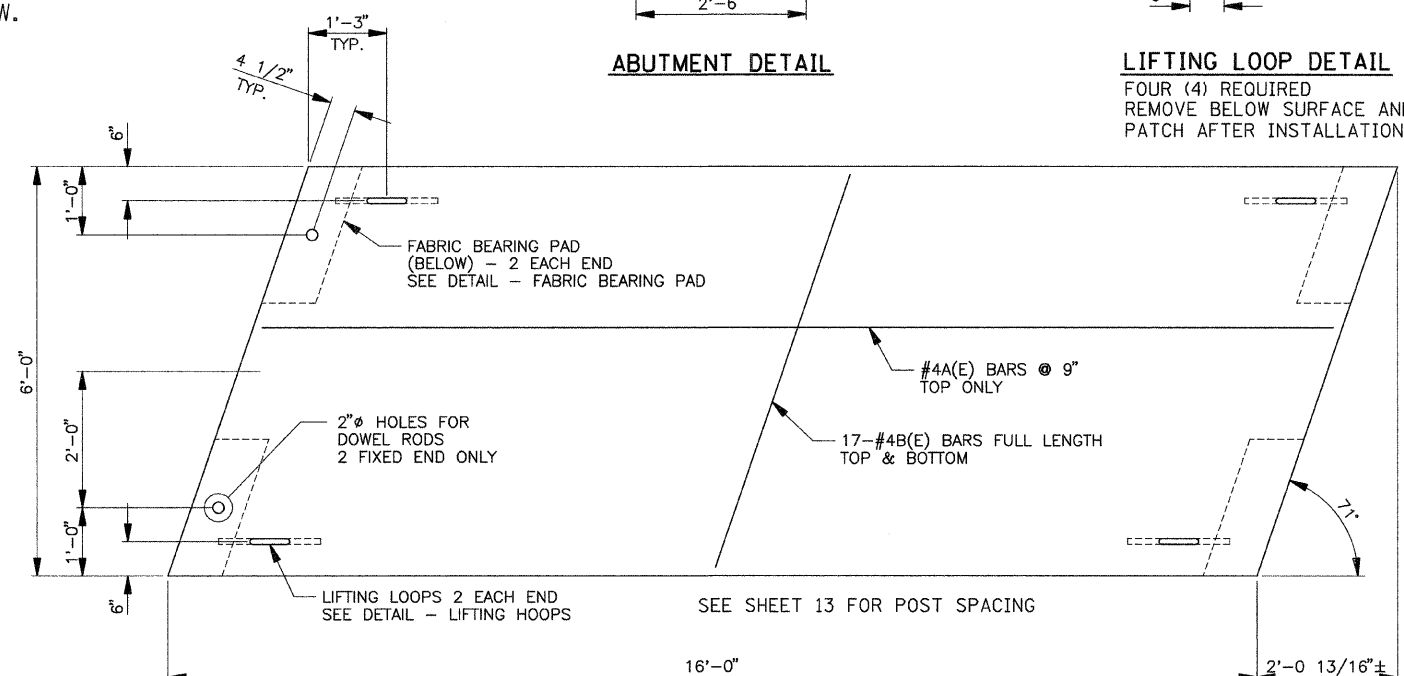
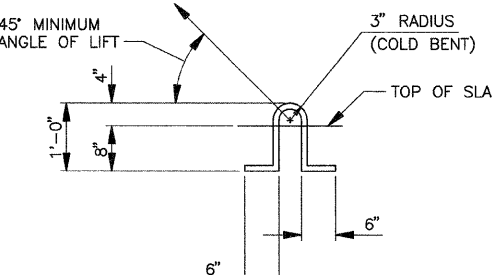
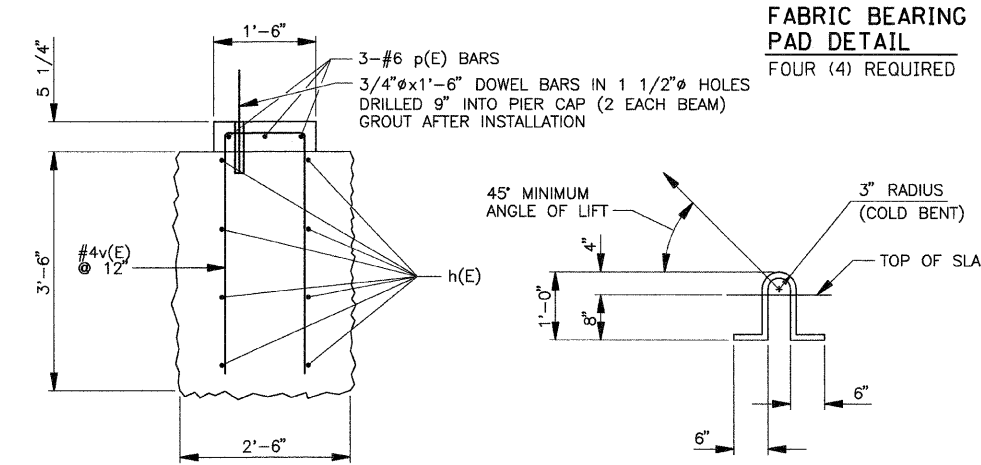
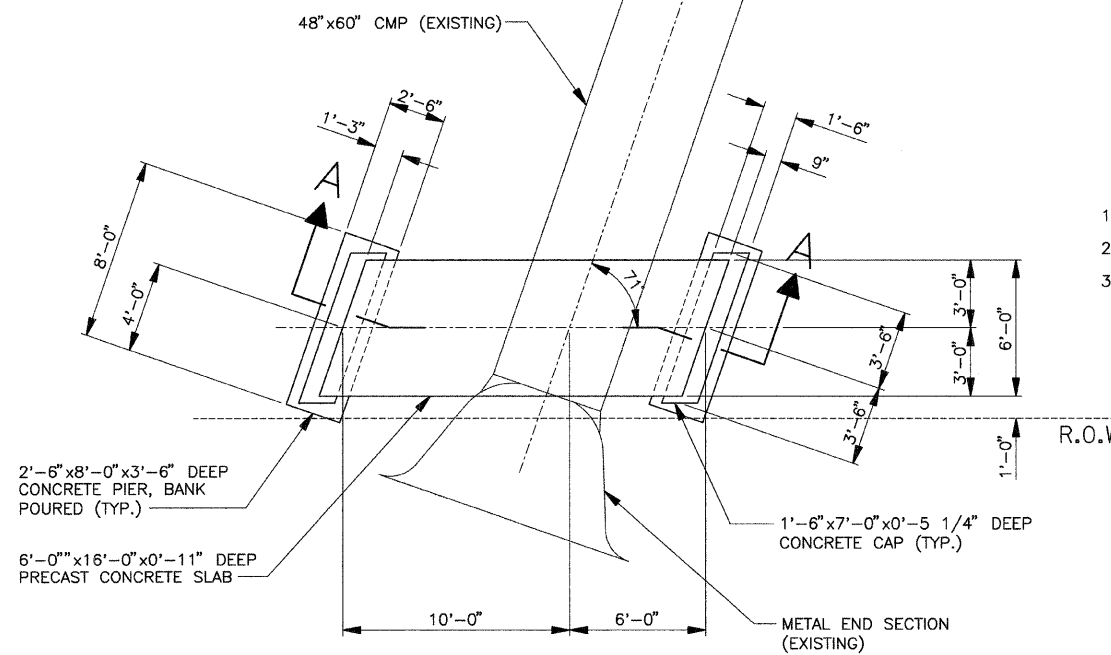
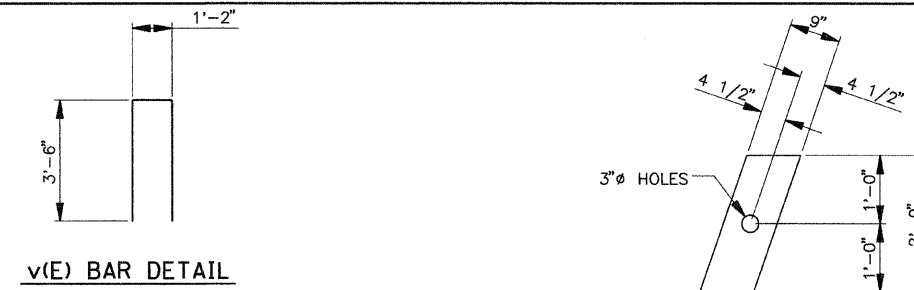
LOADING
 SNOW LOAD: 30 psf
 PEDESTRIAN LOAD: 85 psf
 ALTERNATE CONCENTRATED LOAD: 12 kips

**BILL OF MATERIAL
 SPECIAL STRUCTURE SP-1**

BAR	No.	SIZE	LENGTH	SHAPE
h(E)	16	#5	7'-6"	
p(E)	6	#6	6'-8"	
v(E)	16	#4	8'-2"	
CONCRETE - PIERS		CU YD	5.2	
CONCRETE - CAPS		CU YD	0.35	
REINFORCEMENT BARS EPOXY COATED		POUND	81	
PRECAST SLAB		SQ FT	96	

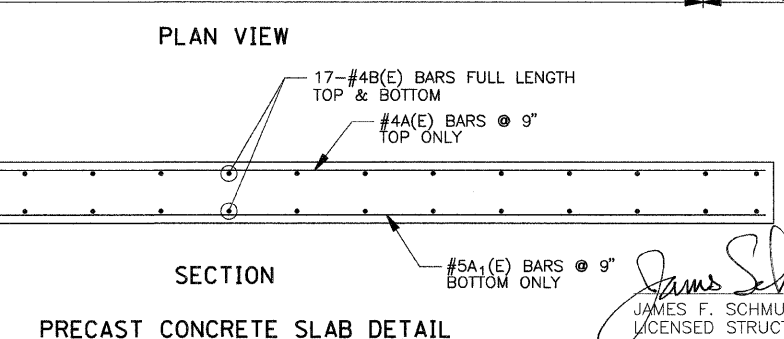
NOTES

- Lifting loops shall be 3-1/2" φ - 270ksi strands, as shown.
- Steel shall conform to AASHTO M-31, M-42 or M-53 Grade 60.
- The bearing seat surfaces shall be adjusted by shimming to assure firm and even bearing. Provide 1/8" fabric adjusting shims as needed.



PRECAST BAR LIST

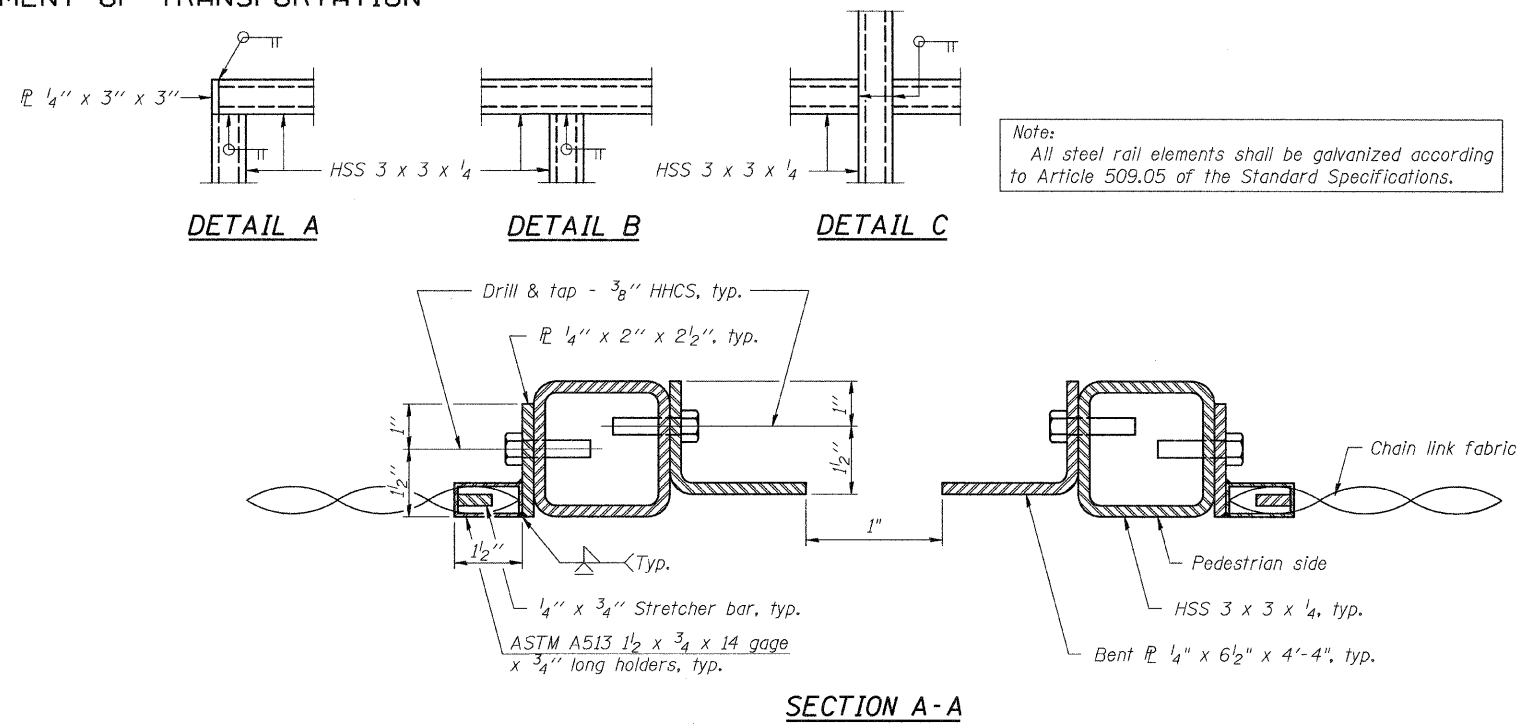
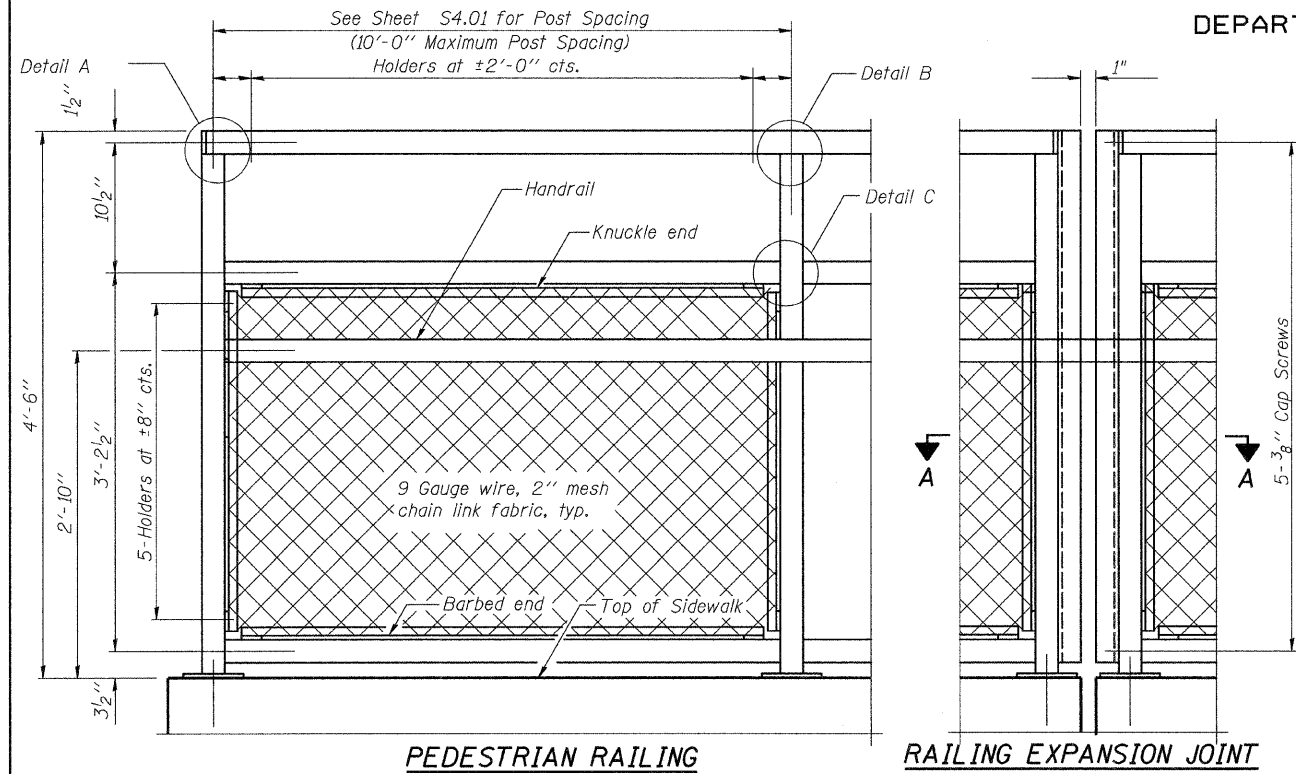
BAR	No.	SIZE	LENGTH	SHAPE
A(E)	9	#4	15'-9"	
A ₁ (E)	9	#5	15'-9"	
B(E)	34	#4	6'-1"	



James F. Schumde April 6, 2009
 JAMES F. SCHUMUDE
 LICENSED STRUCTURAL ENGINEER
 OF ILLINOIS
 ILLINOIS NO. 4422 EXPIRES 11-30-10

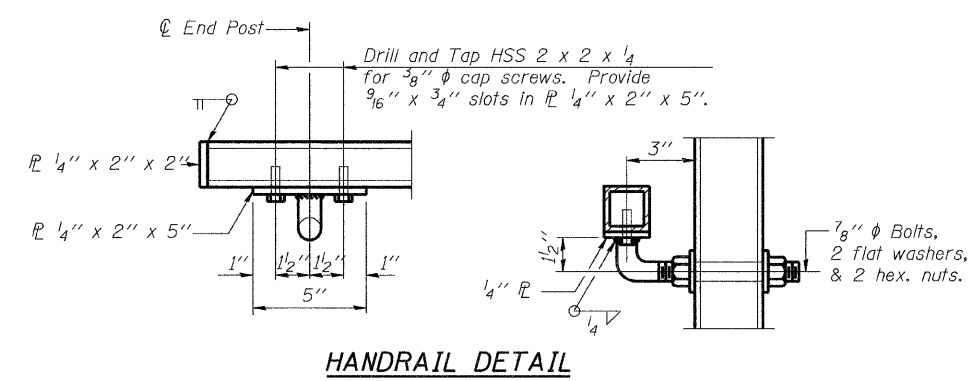
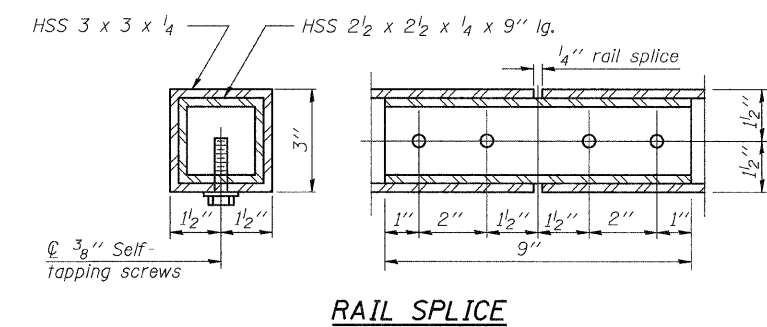
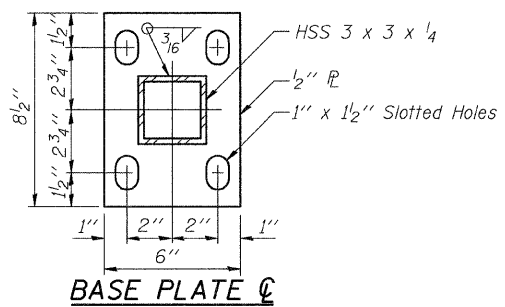
FILE NAME = X:\PE\EL\2008\080803\01\con\Plan\CS.02-H-STRUCTURE DETAILS.dgn

STATE OF ILLINOIS
DEPARTMENT OF TRANSPORTATION



Note:
All steel rail elements shall be galvanized according to Article 509.05 of the Standard Specifications.

Note:
The Contractor shall field drill and set 5/8" ϕ anchor rods according to Article 509.06 of the Standard Specifications. Embedment shall be according to the Manufacturer's Specification.



BILL OF MATERIAL

Item	Unit	Quantity
Pedestrian Railing	Foot	216

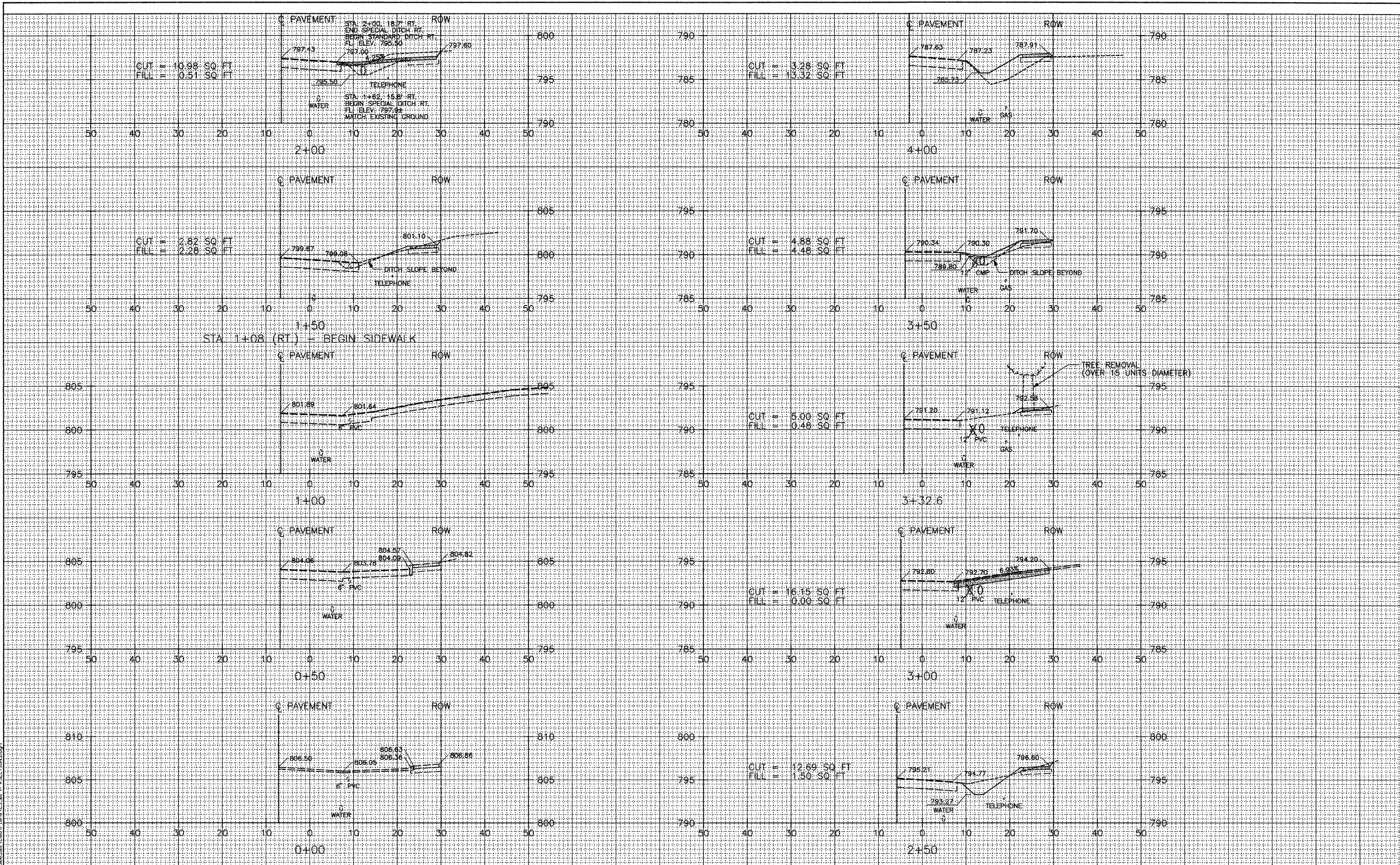
FILE NAME = X:\PEL\2008\086003\01\Draws\Plans\H-PEDESTRIAN RAILING.dgn

	USER NAME = csl	DESIGNED -	REVISED -	STATE OF ILLINOIS DEPARTMENT OF TRANSPORTATION	PEDSTRIAN RAILING DETAILS			F.A. RTE.	SECTION	COUNTY	TOTAL SHEETS	SHEET NO.
	PLOT SCALE = 0.08" / 1"	DRAWN -	REVISED -		08-00000-00-SW	WOODFORD	21	16				
	PLOT DATE = 4/7/2009	CHECKED -	REVISED -		CONTRACT NO. 89503							
		DATE -	REVISED -		ILLINOIS FED. AID PROJECT							
SCALE:					SHEET NO.	OF SHEETS	STA.	TO STA.				

DATE	
BY	
SURVEYED	
PLANNED	
TEMPLATE	
AREAS	
CHECKED	
NO.	

DATE	
BY	
ORIGINAL	
SURVEY	
NOTE	
BOOK	
NO.	

FILE NAME = M:\PE\11-2009\112009\112009.dwg



USER NAME = oxi	DESIGNED -	REVISED -
PLOT SCALE = 18.00' / IN.	DRAWN -	REVISED -
PLOT DATE = 4/7/2009	CHECKED -	REVISED -
	DATE -	REVISED -

**STATE OF ILLINOIS
DEPARTMENT OF TRANSPORTATION**

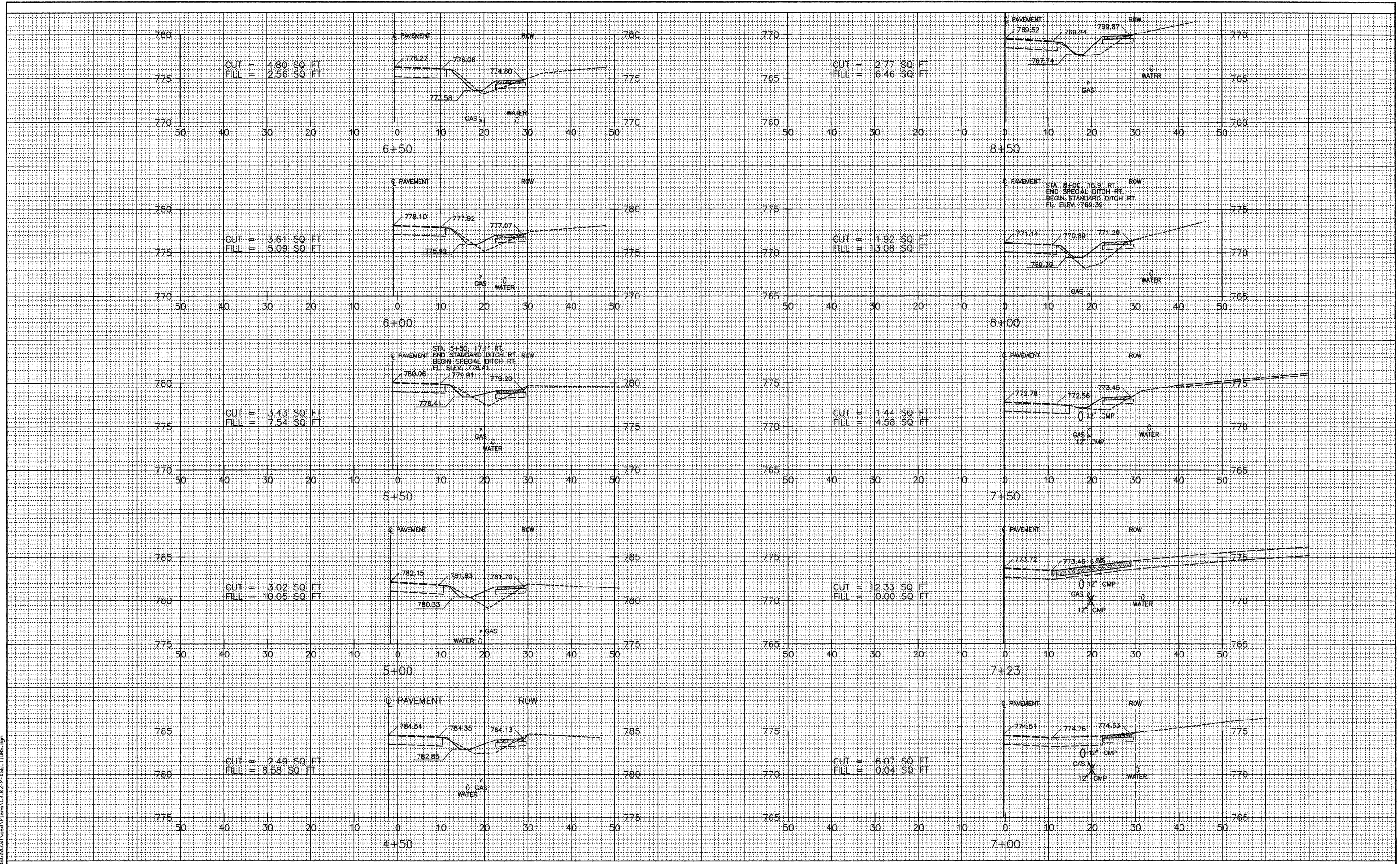
CROSS SECTIONS STA 0+00 TO STA 4+00			
SCALE:	SHEET NO.	OF SHEETS	STA. TO STA.

F.A. RTE.	SECTION	COUNTY	TOTAL SHEETS	SHEET NO.
	08-00000-00-SW	WOODFORD	21	17
CONTRACT NO. 89503				
ILLINOIS FED. AID PROJECT				

DATE _____ BY _____
 SURVEYED _____
 SURVEY _____
 TEMPLATE _____
 NOTE BOOK _____
 AREAS CHECKED _____
 NO. _____

DATE _____ BY _____
 ORIGINAL SURVEY _____
 SURVEY _____
 TEMPLATE _____
 NOTE BOOK _____
 AREAS CHECKED _____
 NO. _____

FILE NAME = X:\VE\12\0808\080803.d\veo1\ma\3_02-HH-SECTION.dgn



USER NAME = cxi	DESIGNED -	REVISED -
PLOT SCALE = 18.00' / IN.	DRAWN -	REVISED -
PLOT DATE = 4/7/2009	CHECKED -	REVISED -
	DATE -	REVISED -

**STATE OF ILLINOIS
DEPARTMENT OF TRANSPORTATION**

**CROSS SECTIONS
STA 4+50 TO STA 8+50**

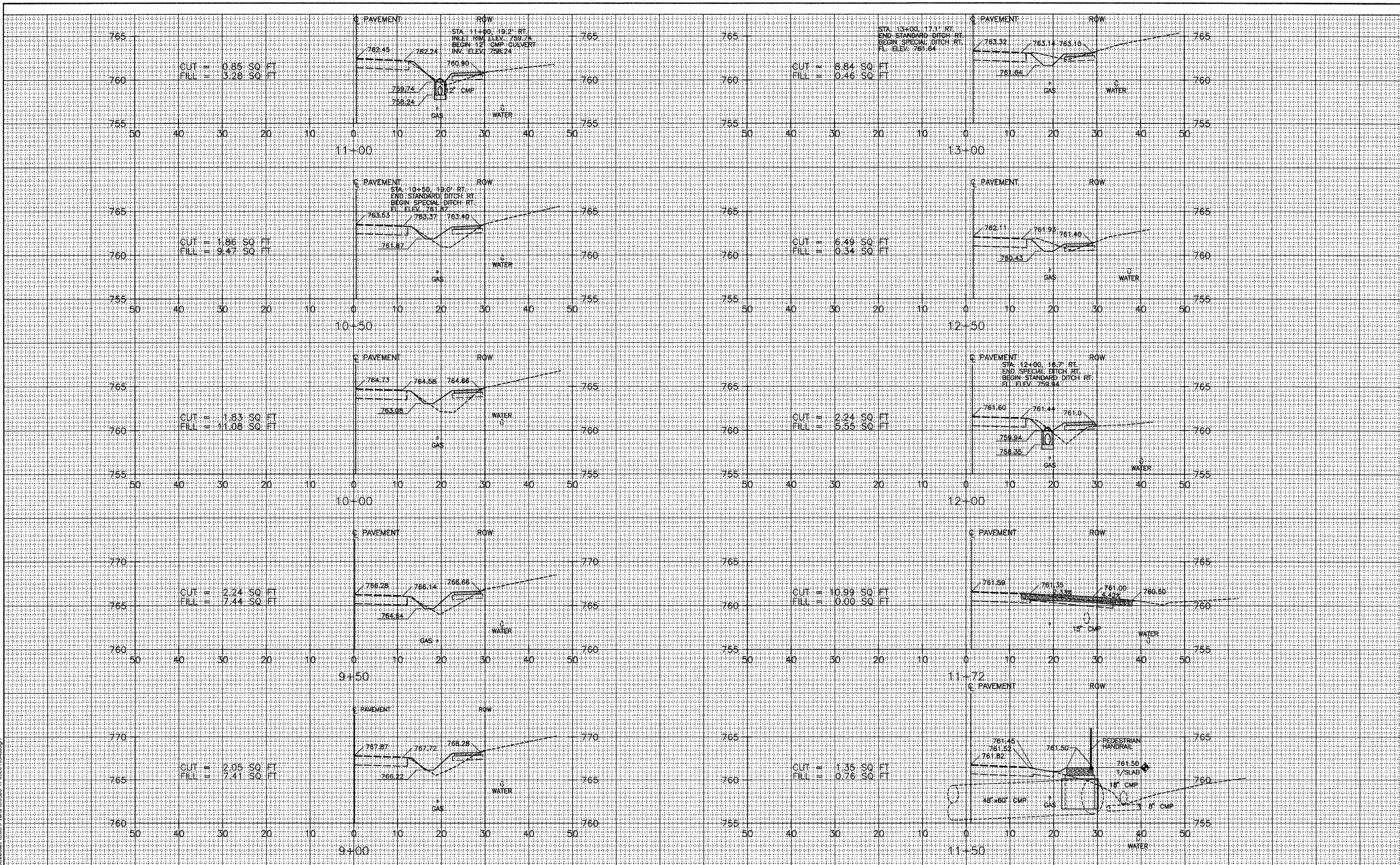
SCALE:	SHEET NO.	OF SHEETS	STA.	TO STA.
--------	-----------	-----------	------	---------

F.A. RTE.	SECTION	COUNTY	TOTAL SHEETS	SHEET NO.
	08-00000-00-SW	WOODFORD	21	18
CONTRACT NO. 89503				
ILLINOIS FED. AID PROJECT				

DATE _____
 BY _____
 SURVEYED _____
 ORIGINAL SURVEY _____
 TEMPLATE _____
 NOTE BOOK _____
 AREAS CHECKED _____
 NO. _____

DATE _____
 BY _____
 SURVEYED _____
 ORIGINAL SURVEY _____
 TEMPLATE _____
 NOTE BOOK _____
 AREAS CHECKED _____
 NO. _____

FILE NAME = X:\PROJECTS\2008\080003\01\Drawings\Plan\CS_09-14\CSSECTIONS.dgn



USER NAME = cx1
 PLOT SCALE = 18.00' / IN.
 PLOT DATE = 4/7/2009

DESIGNED -
 DRAWN -
 CHECKED -
 DATE -

REVISED -
 REVISED -
 REVISED -
 REVISED -

STATE OF ILLINOIS
 DEPARTMENT OF TRANSPORTATION

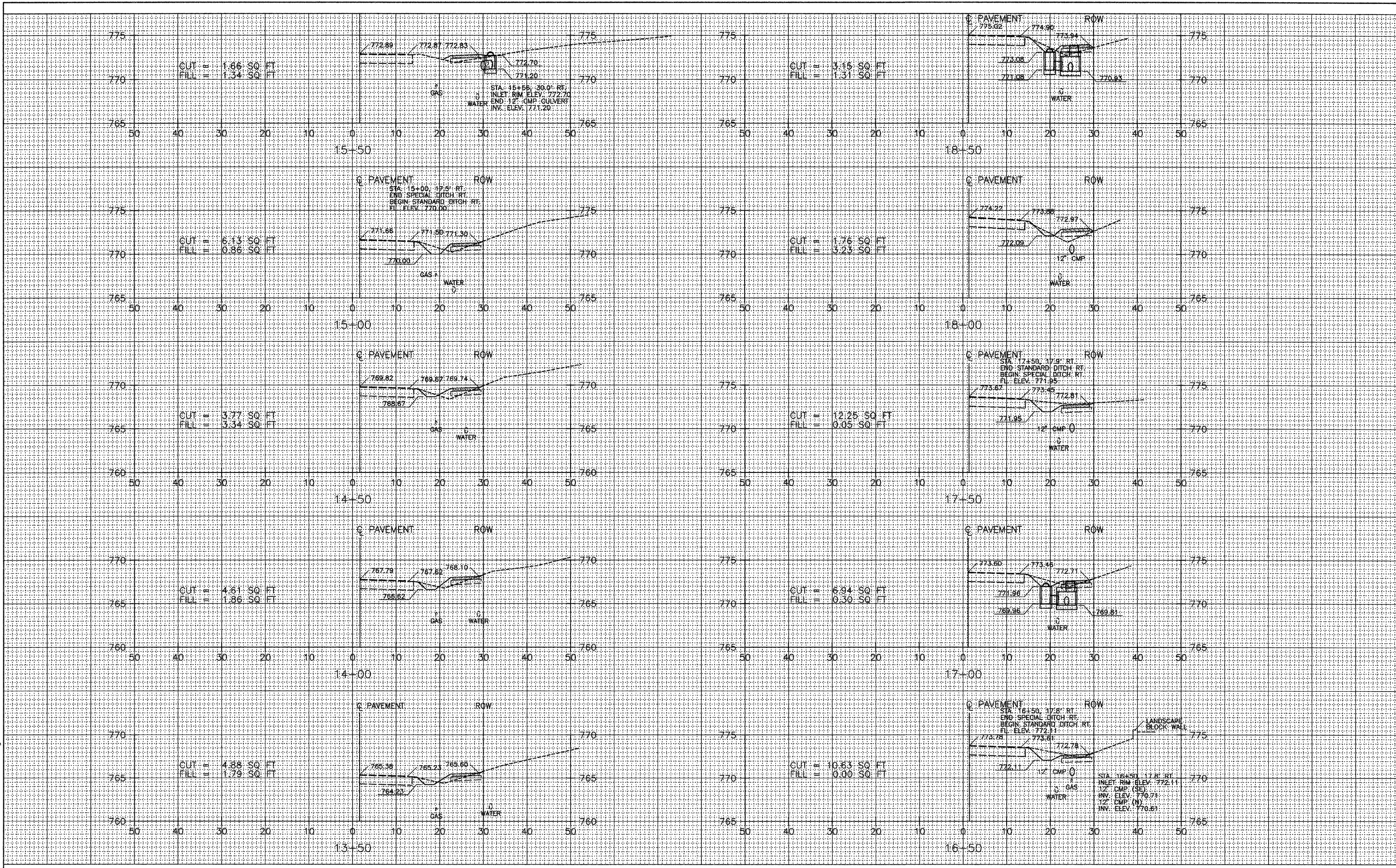
CROSS SECTIONS
 STA 9+00 TO STA 13+00
 SCALE: SHEET NO. OF SHEETS STA. TO STA.

F.A. RTE.	SECTION	COUNTY	TOTAL SHEETS	SHEET NO.
	08-00000-00-SW	WOODFORD	21	19
CONTRACT NO. 89503				
ILLINOIS FED. AID PROJECT				

DATE	
BY	
SURVEYED	
IN FIELD	
TEMPLATE	
AREAS	
CHECKED	
NO.	

DATE	
BY	
SURVEYED	
IN FIELD	
TEMPLATE	
AREAS	
CHECKED	
NO.	

FILE NAME = X:\P\VE\2009\080903.D1\sect\Plana\3.84-H\SECT\DRG5.dgn



USER NAME = owl	DESIGNED -	REVISED -
PLOT SCALE = 10.00' / IN.	DRAWN -	REVISED -
PLOT DATE = 4/7/2009	CHECKED -	REVISED -
	DATE -	REVISED -

STATE OF ILLINOIS
DEPARTMENT OF TRANSPORTATION

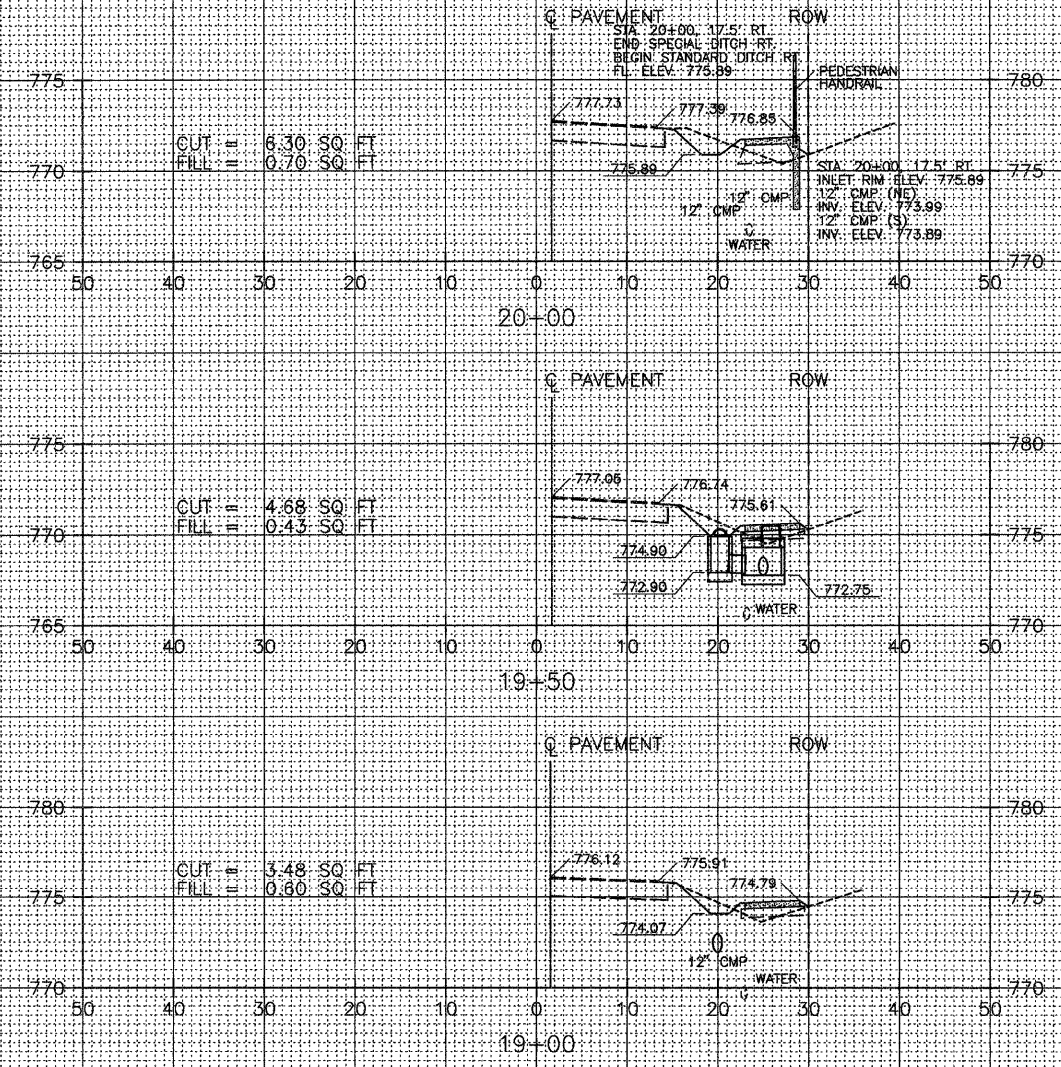
CROSS SECTIONS			
STA 13+50 TO STA 18+50			
SCALE:	SHEET NO.	OF SHEETS	TO STA.

F.A. RTE.	SECTION	COUNTY	TOTAL SHEETS	SHEET NO.
	08-00000-00-SW	WOODFORD	21	20
CONTRACT NO. 89503				
ILLINOIS FED. AID PROJECT				

BY _____ DATE _____
 SURVEYED _____
 ORIGINAL SURVEY _____
 NOTE BOOK _____
 NO. _____

BY _____ DATE _____
 SURVEYED _____
 ORIGINAL SURVEY _____
 NOTE BOOK _____
 NO. _____

STA 20+34.1 - END SIDEWALK



FILE NAME = X:\P\19+00\190003.dwg



USER NAME = oxi	DESIGNED -	REVISED -
PLOT SCALE = 10.00' / IN.	DRAWN -	REVISED -
PLOT DATE = 4/7/2009	CHECKED -	REVISED -
	DATE -	REVISED -

STATE OF ILLINOIS
DEPARTMENT OF TRANSPORTATION

CROSS SECTIONS			
STA 19+00 TO STA 20+00			
SCALE:	SHEET NO.	OF SHEETS	STA. TO STA.

F.A. RTE.	SECTION	COUNTY	TOTAL SHEETS	SHEET NO.
	08-0000-00-SW	WOODFORD	21	21
			CONTRACT NO. 89503	
ILLINOIS FED. AID PROJECT				