

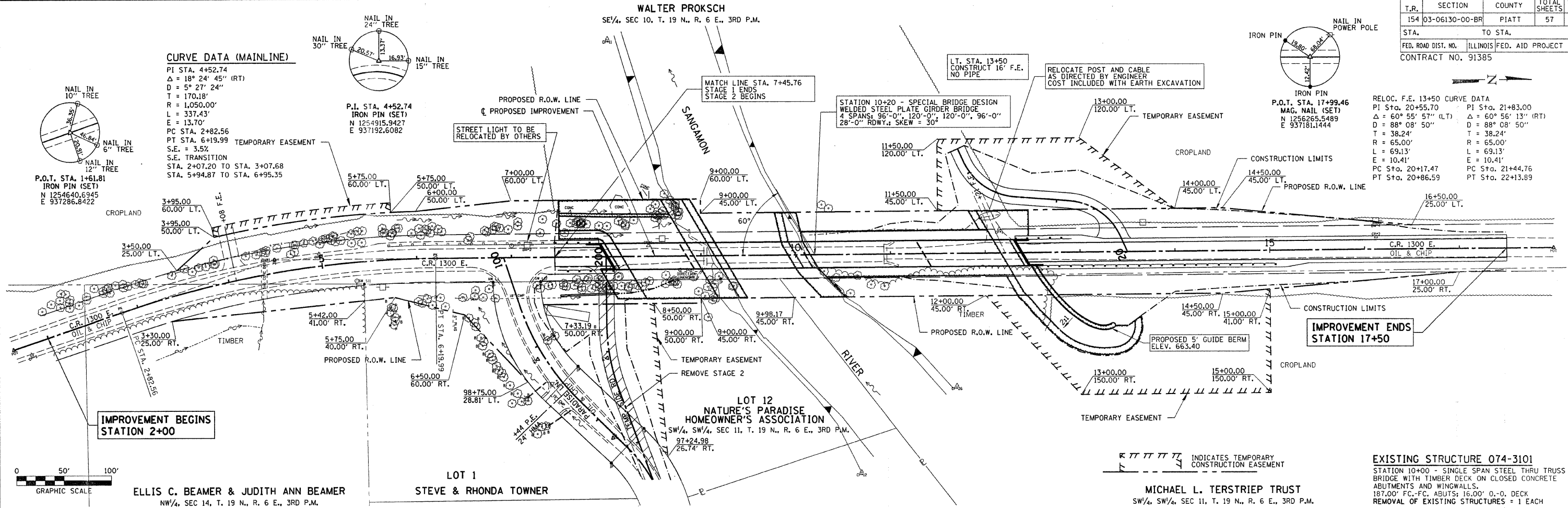
T.R.	SECTION	COUNTY	TOTAL SHEETS	SHEET NO.
154	03-06130-00-BR	PIATT	57	8
STA. TO STA.		ILLINOIS FED. AID PROJECT		
FED. ROAD DIST. NO.		CONTRACT NO. 91385		

CURVE DATA (MAINLINE)
 PI STA. 4+52.74
 $\Delta = 18^\circ 24' 45''$ (RT)
 $D = 5^\circ 27' 24''$
 $T = 170.18'$
 $R = 1,050.00'$
 $L = 337.43'$
 $E = 13.70'$
 PC STA. 2+82.56
 PT STA. 6+19.99
 S.E. = 3.5%
 S.E. TRANSITION
 STA. 2+07.20 TO STA. 3+07.68
 STA. 5+94.87 TO STA. 6+95.35

RELOC. F.E. 13+50 CURVE DATA
 PI Sta. 20+55.70
 $\Delta = 60^\circ 55' 57''$ (LT)
 $D = 88^\circ 08' 50''$
 $T = 38.24'$
 $R = 65.00'$
 $L = 69.13'$
 $E = 10.41'$
 PC Sta. 20+17.47
 PT Sta. 20+86.59

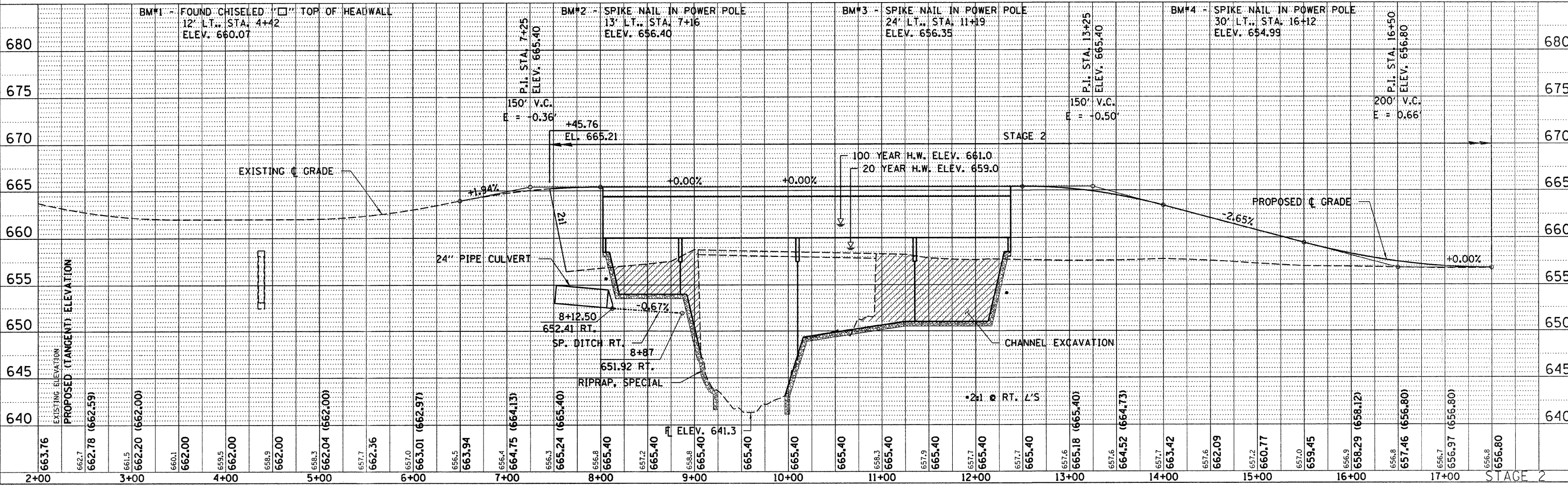
PI Sta. 21+83.00
 $\Delta = 60^\circ 56' 13''$ (RT)
 $D = 88^\circ 08' 50''$
 $T = 38.24'$
 $R = 65.00'$
 $L = 69.13'$
 $E = 10.41'$
 PC Sta. 21+44.76
 PT Sta. 22+13.89

DATE	BY	REVISION



EXISTING STRUCTURE 074-3101
 STATION 10+00 - SINGLE SPAN STEEL THRU TRUSS BRIDGE WITH TIMBER DECK ON CLOSED CONCRETE ABUTMENTS AND WINGWALLS.
 187.00' FC-FC. ABUTS: 16.00' 0-0. DECK REMOVAL OF EXISTING STRUCTURES = 1 EACH

DATE	BY	REVISION



PLOT DATE: 11/8/2009 FILE NAME: 75001-sh1-pp1-stg2.dgn