

T.R.	SECTION	COUNTY	TOTAL SHEETS	SHEET NO.
154	03-06130-00-BR	PIATT	57	9
STA.		TO STA.		
FED. ROAD DIST. NO.		ILLINOIS FED. AID PROJECT		
SIDE ROAD - ALTERNATE 1				
CONTRACT NO. 91385				

**CURVE DATA CURPLN2
(SIDE ROAD)**

PI Sta. 98+89.16
 $\Delta = 27^\circ 08' 54''$ (RT)
 $D = 22^\circ 55' 06''$
 $T = 60.36'$
 $R = 250.00'$
 $L = 118.46'$
 $E = 7.18'$
 PC Sta. 98+28.80
 PT Sta. 99+47.26
 $SE = 4\%$
 SE TRANSITIONS
 STA. 97+74.33 TO STA. 98+62.15
 STA. 99+13.51 TO STA. 99+89.49

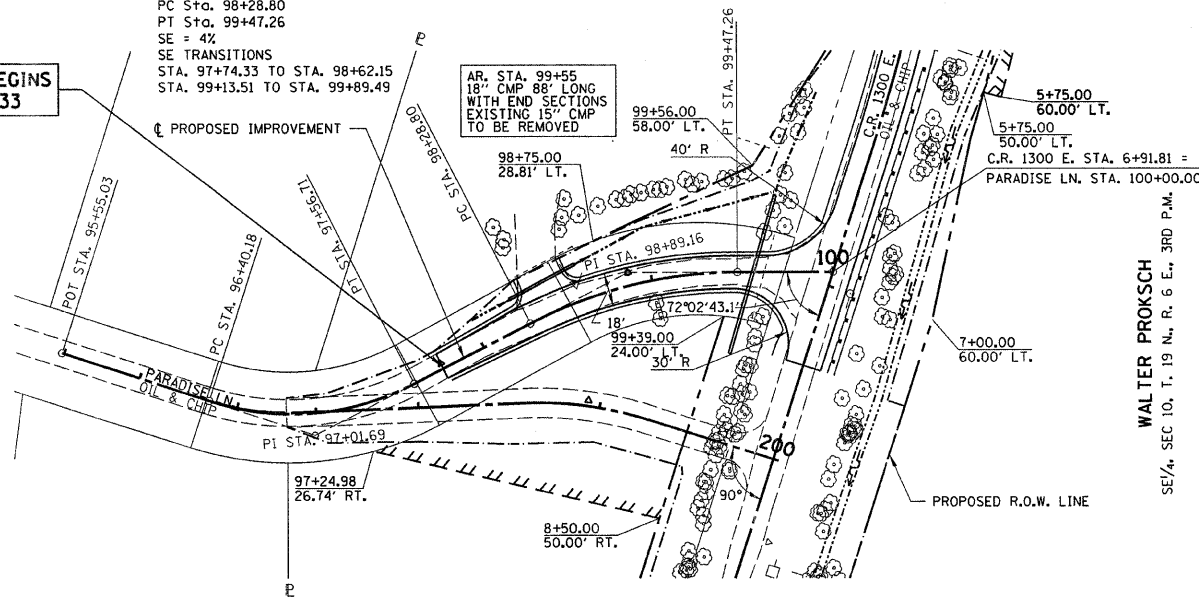
LT. STA. 98+44
 CONSTRUCT 24' P.E.
 15" CMP

LOT 1
 STEVE & RHONDA TOWNER

IMPROVEMENT BEGINS
 STATION 97+74.33

**CURVE DATA CURPLN1
(EXISTING CURVE DATA)**

PI Sta. 97+01.69
 $\Delta = 45^\circ 20' 17''$ (LT)
 $D = 38^\circ 54' 28''$
 $T = 61.51'$
 $R = 147.26'$
 $L = 116.53'$
 $E = 12.33'$
 PC Sta. 96+40.18
 PT Sta. 97+56.71



LOT 12
 NATURE'S PARADISE
 HOMEOWNER'S ASSOCIATION
 SW 1/4, SW 1/4, SEC 11, T. 19 N., R. 6 E., 3RD P.M.

SIDE ROAD (PARADISE LANE)

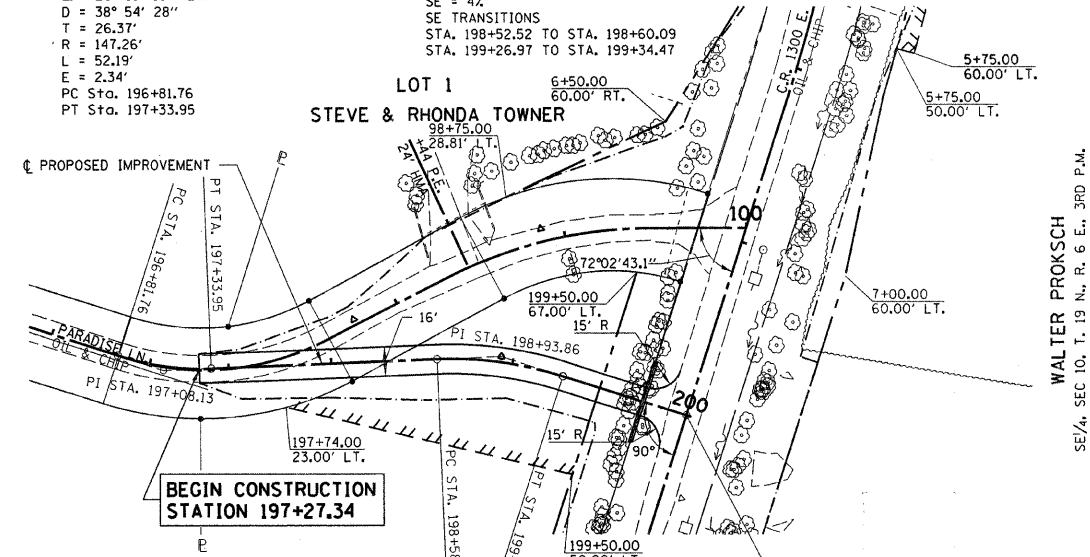
**CURVE DATA CURTSR1
(EXISTING CURVE DATA)**

PI Sta. 197+08.13
 $\Delta = 20^\circ 18' 18''$ (LT)
 $D = 38^\circ 54' 28''$
 $T = 26.37'$
 $R = 147.26'$
 $L = 52.19'$
 $E = 2.34'$
 PC Sta. 196+81.76
 PT Sta. 197+33.95

**CURVE DATA CURTSR2
(TEMPORARY SIDE ROAD)**

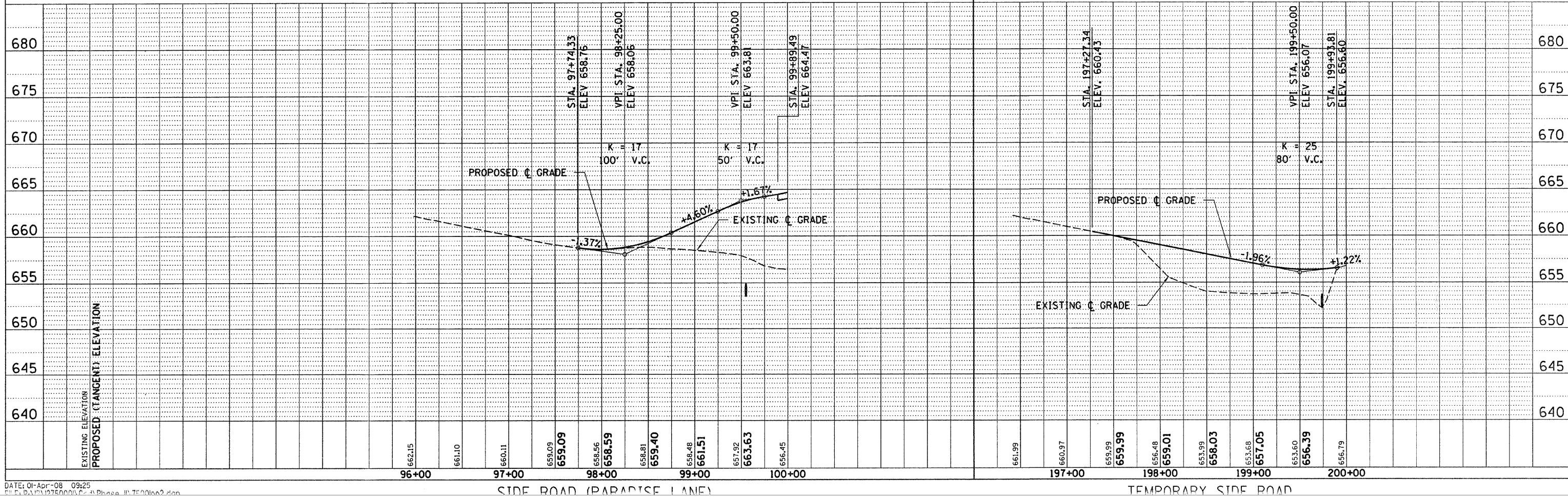
PI Sta. 198+93.86
 $\Delta = 20^\circ 04' 12''$ (RT)
 $D = 28^\circ 38' 52''$
 $T = 35.39'$
 $R = 200.00'$
 $L = 70.06'$
 $E = 3.11'$
 PC Sta. 198+58.35
 PT Sta. 199+28.64
 $SE = 4\%$
 SE TRANSITIONS
 STA. 198+52.52 TO STA. 198+60.09
 STA. 199+26.97 TO STA. 199+34.47

LOT 1
 STEVE & RHONDA TOWNER



LOT 12
 NATURE'S PARADISE
 HOMEOWNER'S ASSOCIATION
 SW 1/4, SW 1/4, SEC 11, T. 19 N., R. 6 E., 3RD P.M.

TEMPORARY SIDE ROAD



SIDE ROAD (PARADISE LANE)

TEMPORARY SIDE ROAD