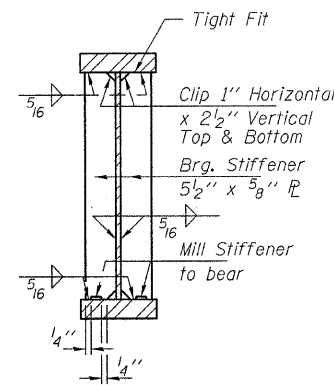
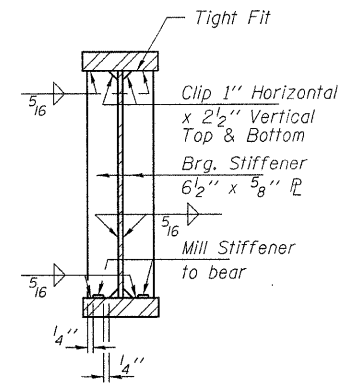


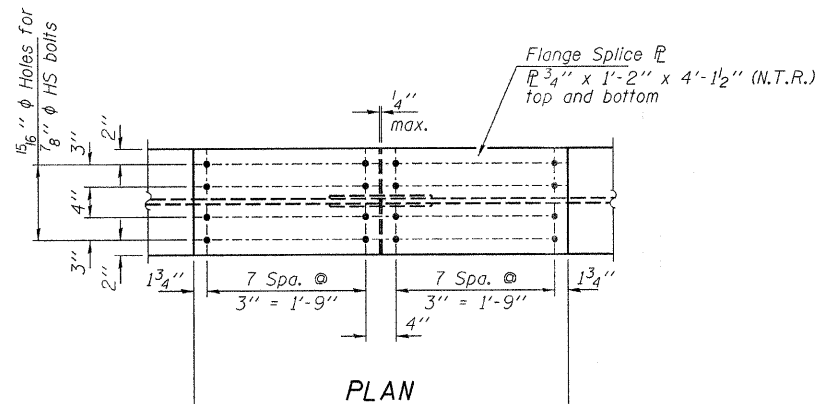
SECTION AT PIERS



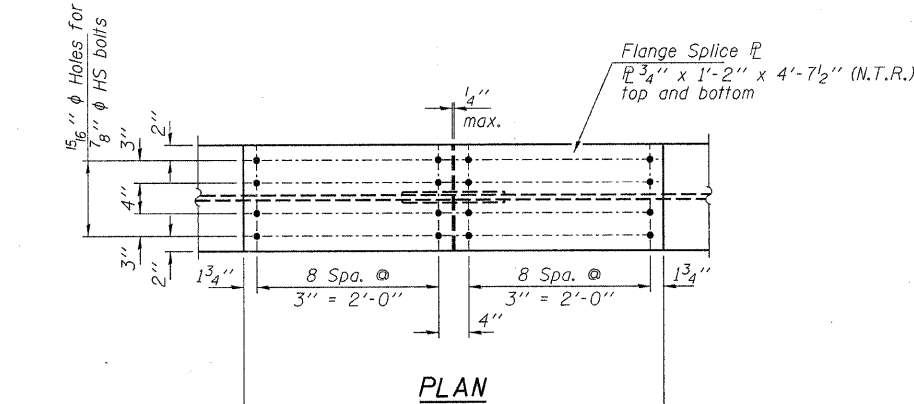
SECTION AT S. ABUTMENT
BEARING STIFFENER PL'S



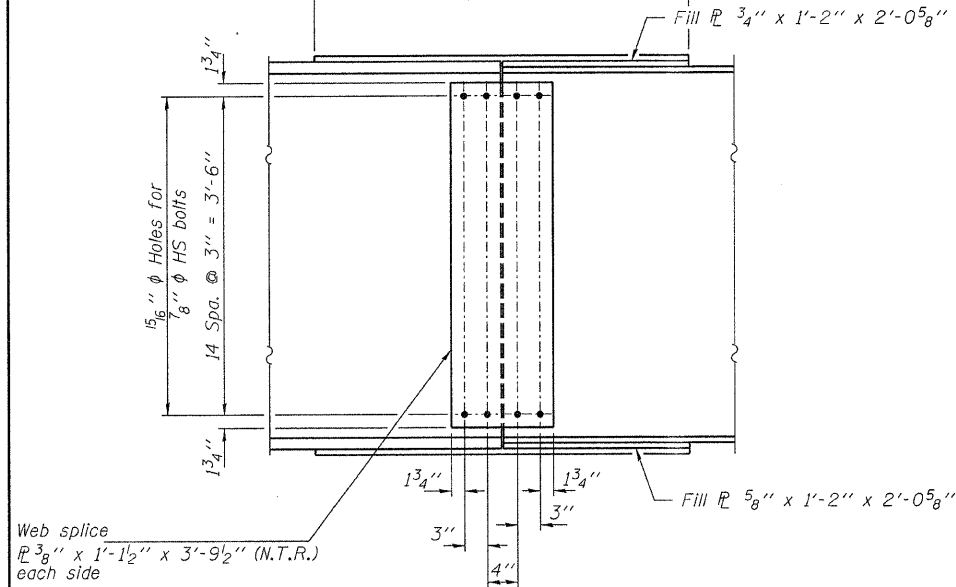
SECTION AT N. ABUTMENT



PLAN

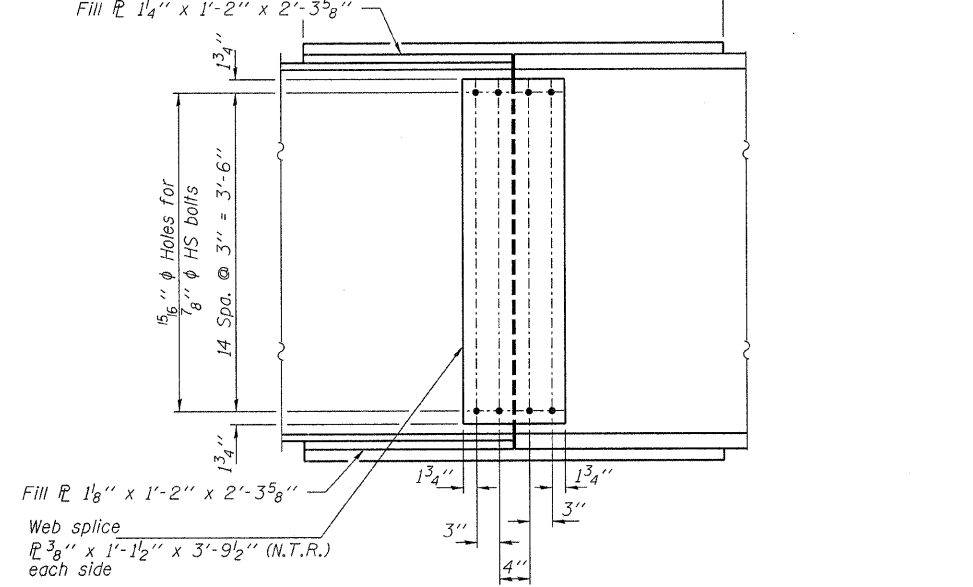


PLAN



ELEVATION

SPLICE #1 DETAIL
(4-required)



ELEVATION

SPLICE #2 & #3 DETAIL
(8-required)

Notes: Load carrying components designated N.T.R. shall conform to the supplemental Requirements for Notch Toughness Zone 2.
All structural steel for splice plates and stiffeners shall be AASHTO M270 Grade 50W.
For additional structural steel details see sheets 23, 25 & 26.

| |
|-------------------|
| DESIGNED - M.D.C. |
| CHECKED - S.M.S. |
| DRAWN - D.A.B. |
| CHECKED - M.G.B. |

STRUCTURAL STEEL DETAILS
STRUCTURE NO. 074-3296

| | | | | | |
|---|------|----------------|--------------------|--------------|-----------|
| HAMPTON, LENZINI & RENWICK, INC. CIVIL & STRUCTURAL ENGINEERS LAND SURVEYORS 3085 STEVENSON DRIVE, SUITE 201 SPRINGFIELD, ILLINOIS 62703 (217) 546-3400 PROJECT NUMBER: 12-76-0001-1 DATE: 12/22/08 | T.R. | SECTION | COUNTY | TOTAL SHEETS | SHEET NO. |
| | 154 | 03-06130-00-BR | PIATT | 57 | 24 |
| SANGAMON ROAD DISTRICT | | | CONTRACT NO. 91385 | | |
| FED. ROAD DIST. NO. | | ILLINOIS | FED. AID PROJECT | | |