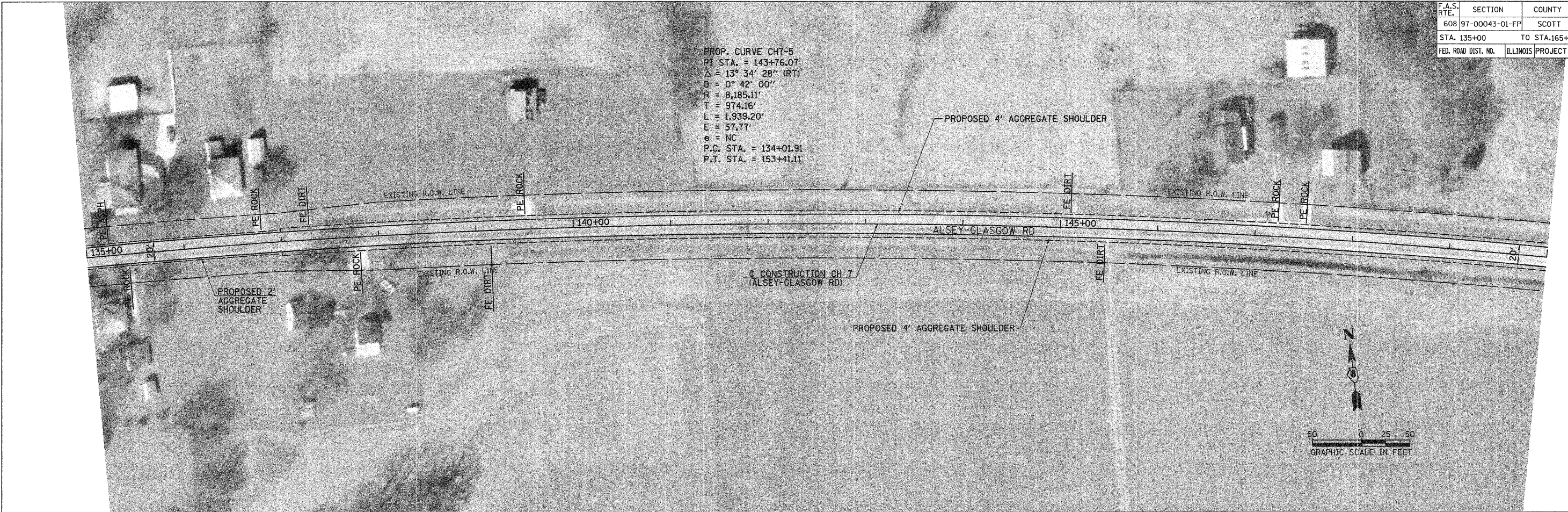
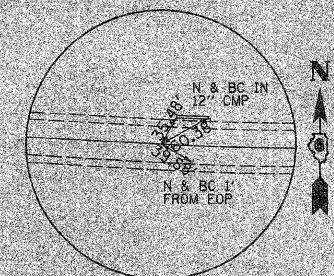


F.A.S. RTE.	SECTION	COUNTY	TOTAL SHEETS	SHEET NO.
608	97-00043-01-FP	SCOTT	17	10
STA. 135+00		TO STA. 165+00		
FED. ROAD DIST. NO.		ILLINOIS PROJECT NO SR-0608(109)		

PROP. CURVE CH7-5
 PI STA. = 143+76.07
 $\Delta = 13^\circ 34' 28''$ (RT)
 $D = 0^\circ 42' 00''$
 $R = 8,185.11'$
 $T = 974.16'$
 $L = 1,939.20'$
 $E = 57.77'$
 $e = NC$
 P.C. STA. = 134+01.91
 P.T. STA. = 153+41.11

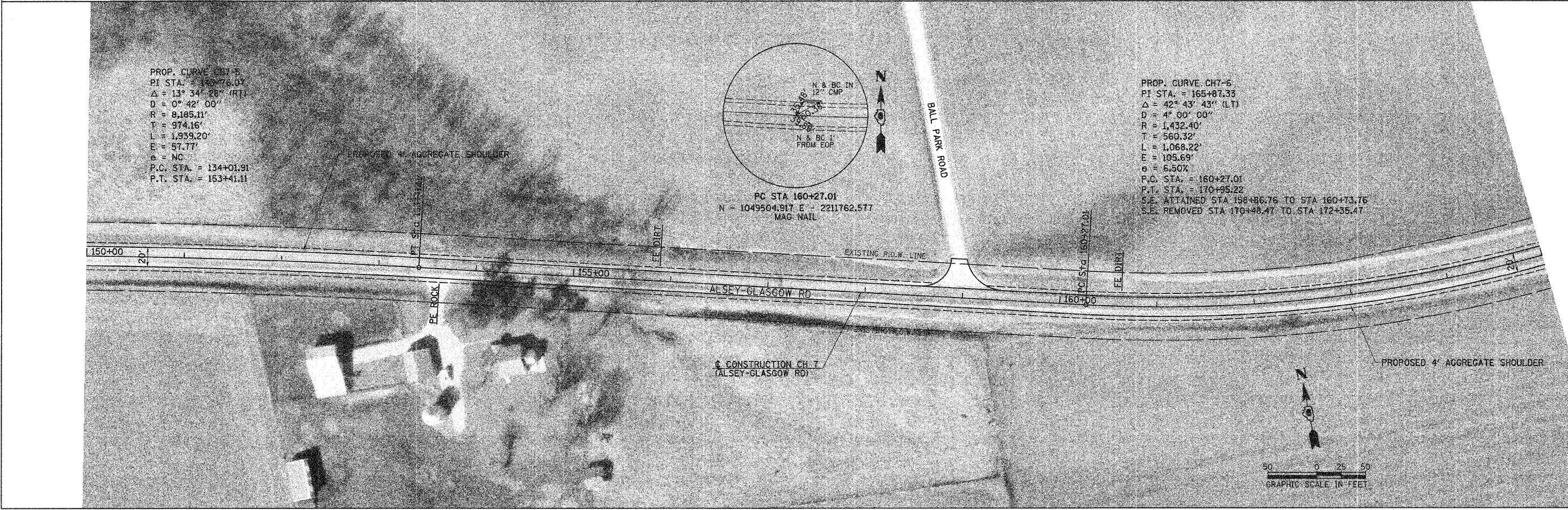


PROP. CURVE CH7-5
 PI STA. = 143+76.07
 $\Delta = 13^\circ 34' 28''$ (RT)
 $D = 0^\circ 42' 00''$
 $R = 8,185.11'$
 $T = 974.16'$
 $L = 1,939.20'$
 $E = 57.77'$
 $e = NC$
 P.C. STA. = 134+01.91
 P.T. STA. = 153+41.11



PC STA 160+27.01
 $N = 1049504.917$ $E = 2211762.577$
 MAG. NAIL

PROP. CURVE CH7-6
 PI STA. = 165+87.33
 $\Delta = 42^\circ 43' 43''$ (LT)
 $D = 4^\circ 00' 00''$
 $R = 1,432.40'$
 $T = 560.32'$
 $L = 1,068.22'$
 $E = 105.69'$
 $e = 6.50\%$
 P.C. STA. = 160+27.01
 P.T. STA. = 170+95.22
 S.E. ATTAINED STA 158+86.76 TO STA 160+73.76
 S.E. REMOVED STA 170+48.47 TO STA 172+35.47



PLOT DATE = 3/2/2009
 FILE NAME = V:\2438\COMBINED PLANS 2438p06.dgn
 USER = bbray