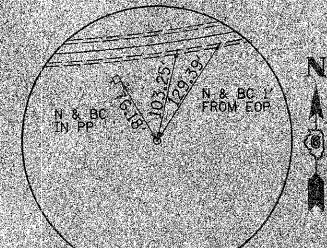
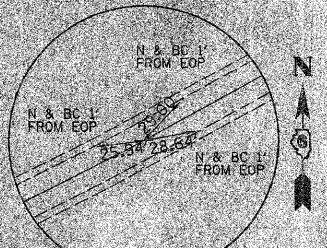


| F.A.S. RTE. | SECTION | COUNTY | TOTAL SHEETS | SHEET NO. |
|---------------------|---------|----------------------------------|--------------|-----------|
| 608 97-00043-01-FP | | SCOTT | 17 | 11 |
| STA. 165+00 | | TO STA. 195+00 | | |
| FED. ROAD DIST. NO. | | ILLINOIS PROJECT NO SR-0608(109) | | |

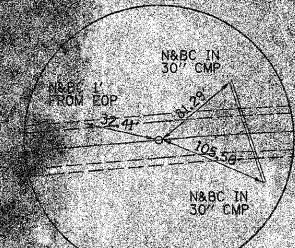
PROP. CURVE CH7-6
 PI STA. = 165+87.33
 $\Delta = 42^\circ 43' 43''$ (LT)
 $D = 4' 00'' 00''$
 $R = 1,432.40'$
 $T = 560.32'$
 $L = 1,068.22'$
 $E = 105.69'$
 $e = 6.50\%$
 P.C. STA. = 160+27.01
 P.T. STA. = 170+95.22
 S.E. ATTAINED STA 158+86.76 TO STA 160+73.76
 S.E. REMOVED STA 170+48.47 TO STA 172+35.47



PI STA 165+87.33
 $N = 1049366.879$ $E = 2212305.628$
 $\frac{5}{8}''$ I-ROD
 (BURIED 6'')



PT STA 170+95.22
 $N = 1049633.954$ $E = 2212798.204$
 MAG NAIL

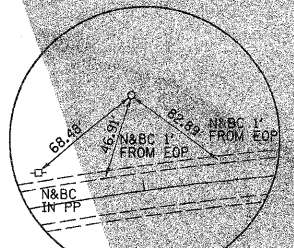


PC STA 179+01.58
 $N = 1050018.299$ $E = 2213507.067$
 MAG NAIL

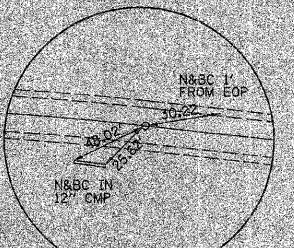


PROP. CURVE CH7-7
 PI STA. = 183+37.89
 $\Delta = 29^\circ 12' 18''$ (RT)
 $D = 3' 25' 16''$
 $R = 1,674.72'$
 $T = 436.31'$
 $L = 853.65'$
 $E = 55.90'$
 $e = 6.00\%$
 P.C. STA. = 179+01.58
 P.T. STA. = 187+55.22
 S.E. ATTAINED STA 177+69.58 TO STA 179+45.58
 S.E. REMOVED STA 187+11.22 TO STA 188+87.22

PROP. CURVE CH7-7
 PI STA. = 183+37.89
 $\Delta = 29^\circ 12' 18''$ (RT)
 $D = 3' 25' 16''$
 $R = 1,674.72'$
 $T = 436.31'$
 $L = 853.65'$
 $E = 55.90'$
 $e = 6.00\%$
 P.C. STA. = 179+01.58
 P.T. STA. = 187+55.22
 S.E. ATTAINED STA 177+69.58 TO STA 179+45.58
 S.E. REMOVED STA 187+11.22 TO STA 188+87.22



PI STA 183+37.89
 $N = 1050226.265$ $E = 2213890.626$
 $\frac{5}{8}''$ I-ROD
 (BURIED 6'')



PT STA 187+55.22
 $N = 1050220.641$ $E = 2214326.901$
 MAG NAIL



PLOT DATE = 3/2/2009
 FILE NAME = V:\2438\COMBINED PLANS\2438p007.dgn
 USER = B.Bohannon