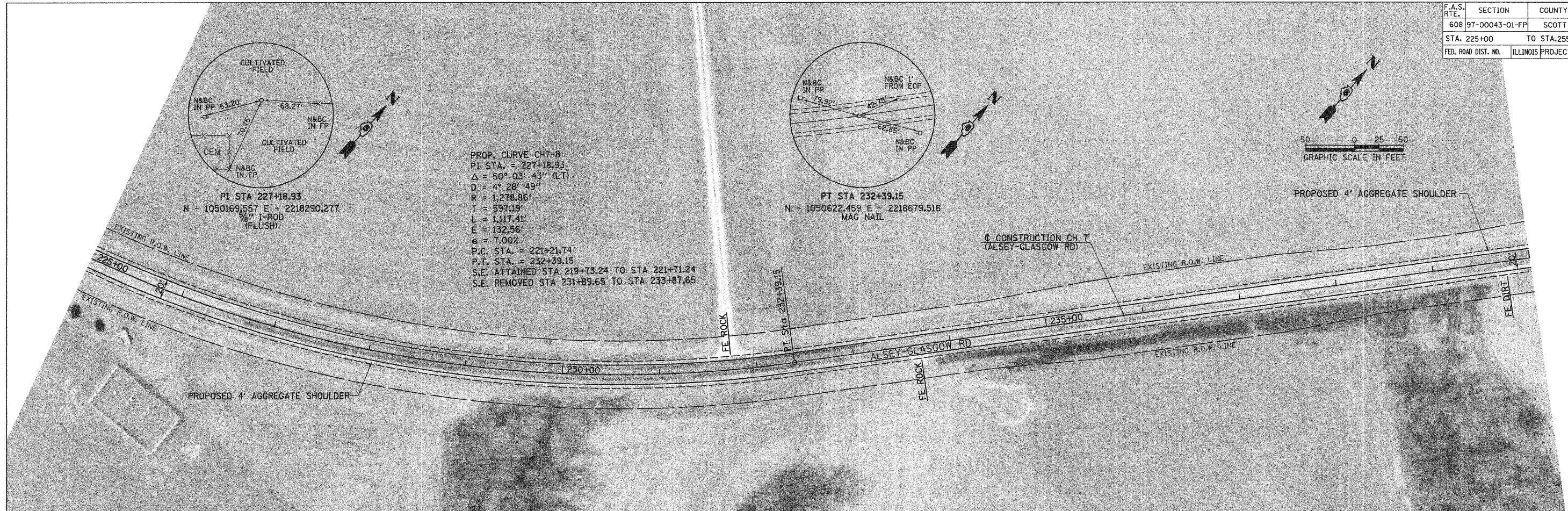
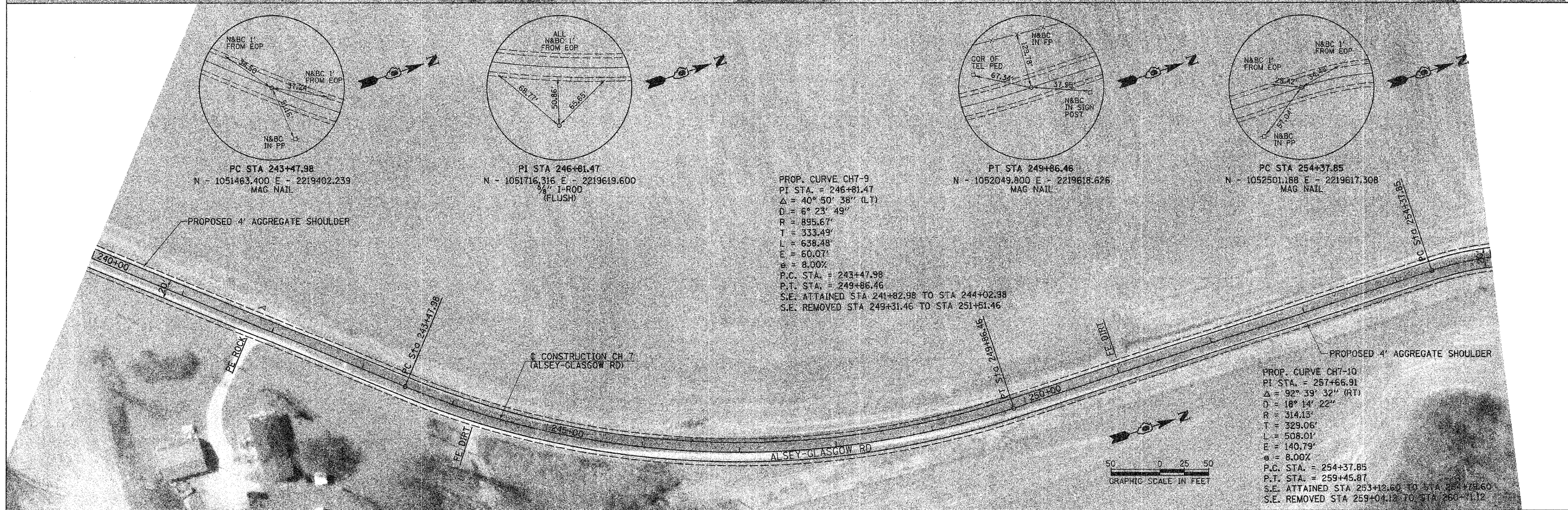
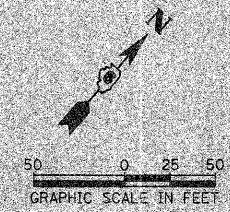


| F.A.S. RTE. | SECTION | COUNTY | TOTAL SHEETS | SHEET NO. |
|---------------------|----------------|-----------------------------------|--------------|-----------|
| 608 | 97-00043-01-FP | SCOTT | 17 | 13 |
| STA. 225+00 | | TO STA. 255+00 | | |
| FED. ROAD DIST. NO. | | ILLINOIS PROJECT NO. SR-0608(109) | | |



PROP. CURVE CH7-8
 PI STA. = 227+18.93
 $\Delta = 50^\circ 03' 43''$ (LT)
 $D = 4^\circ 28' 49''$
 $R = 1,278.86'$
 $T = 597.19'$
 $L = 1,117.41'$
 $E = 132.56'$
 $e = 7.00\%$
 P.C. STA. = 221+21.74
 P.T. STA. = 232+39.15
 S.E. ATTAINED STA 219+73.24 TO STA 221+71.24
 S.E. REMOVED STA 231+89.65 TO STA 233+87.65

PT STA 232+39.15
 N = 1050622.459 E = 2218679.516
 MAG NAIL



PC STA 243+47.98
 N = 1051463.400 E = 2219402.239
 MAG NAIL

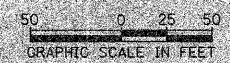
PI STA 246+81.47
 N = 1051716.316 E = 2219619.600
 $\frac{5}{8}$ " I-ROD
 (FLUSH)

PROP. CURVE CH7-9
 PI STA. = 246+81.47
 $\Delta = 40^\circ 50' 38''$ (LT)
 $D = 6^\circ 23' 49''$
 $R = 895.67'$
 $T = 333.49'$
 $L = 638.48'$
 $E = 60.07'$
 $e = 8.00\%$
 P.C. STA. = 243+47.98
 P.T. STA. = 249+86.46
 S.E. ATTAINED STA 241+82.98 TO STA 244+02.38
 S.E. REMOVED STA 249+31.46 TO STA 251+81.46

PT STA 249+86.46
 N = 1052049.800 E = 2219618.626
 MAG NAIL

PC STA 254+37.85
 N = 1052501.188 E = 2219617.308
 MAG NAIL

PROP. CURVE CH7-10
 PI STA. = 257+66.91
 $\Delta = 92^\circ 39' 32''$ (RT)
 $D = 18^\circ 14' 22''$
 $R = 314.13'$
 $T = 329.06'$
 $L = 508.01'$
 $E = 140.79'$
 $e = 8.00\%$
 P.C. STA. = 254+37.85
 P.T. STA. = 259+45.87
 S.E. ATTAINED STA 253+12.60 TO STA 257+88.60
 S.E. REMOVED STA 259+04.12 TO STA 260+71.12



PLOT DATE = 3/2/2009
 FILE NAME = V:\2439\COMBINED PLANS\2439-007A.dgn
 USER NAME = sborghen