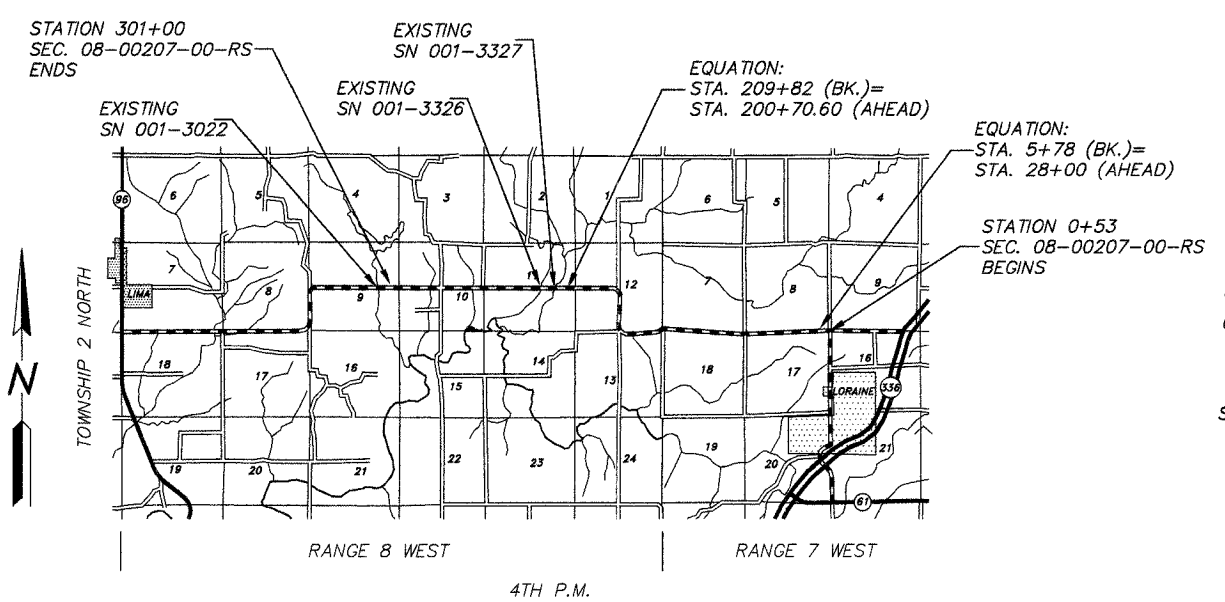
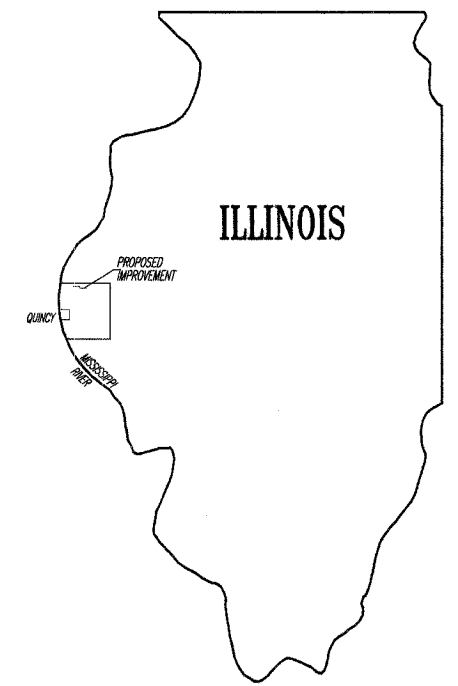


COUNTY	ROUTE	SECTION	TOTAL SHEETS	SHEET NO.
ADAMS	FAS 2592	08-00207-00-RS	15	1

INDEX OF SHEETS:

SHEET NO.	SHEET
1	TITLE SHEET
2	SUMMARY OF QUANTITIES
	GENERAL NOTES
3	TYPICAL CROSS SECTIONS
4-14	PLAN SHEETS
15	SIDE ROAD & ENTRANCE DETAILS
	BUTT JOINT DETAIL
STANDARD	701001-02
STANDARD	701006-03
STANDARD	701301-03
STANDARD	701306-02
STANDARD	701901-01
STANDARD	BLR 24-2

STATE OF ILLINOIS
DEPARTMENT OF TRANSPORTATION
DIVISION OF HIGHWAYS
PLANS FOR PROPOSED
SURFACE TRANSPORTATION/RURAL PROGRAM
LOCAL AGENCY PAVEMENT PRESERVATION
FAS 2592 (CH 1) SECTION 08-00207-00-RS ADAMS COUNTY
PROJECT NO. ARA-RS-2592(102) JOB NO. C-96-223-08



LOCATION MAP

FUNCTIONAL CLASS: MAJOR COLLECTOR (NON-URBAN)
ADT=375

PROPOSED IMPROVEMENT CONSISTS OF PLACING 1 1/2" POLYMERIZED HOT-MIX ASPHALT SURFACE COURSE, MIX "C", N50 OVER 3/4" OF LEVELING BINDER (MACHINE METHOD) N50 ON THE EXISTING 22" ROADWAY WITH OTHER MISCELLANEOUS CONSTRUCTION

- UTILITIES:**
- J.U.L.I.E. _____ 1-800-892-0123
 - ADAMS TELEPHONE _____ GOLDEN, IL
 - ADAMS RURAL ELECTRICAL CO-OP _____ CAMP POINT, IL
 - ABS WATER DISTRICT _____ GOLDEN, IL

GROSS LENGTH:
 STA. 0+53.00 TO STA. 5+78.00 = 525.00 FT.
 STA. 28+00.00 TO STA. 209+82.00 = 18,182.00 FT.
 STA. 200+70.60 TO STA. 301+00.00 = 10,029.40 FT.
 28,736.40 FT.

BRIDGE OMISSIONS:
 STA. 204+30.46 TO STA. 208+52.04 = 421.58 FT.
 STA. 214+99.25 TO STA. 217+00.75 = 201.50 FT.

NET LENGTH TO BE IMPROVED: 623.08 FT.
 28,113.32 FT. = 5.324 MILES

THESE PLANS WERE PREPARED BY ME OR BY A FULL-TIME MEMBER OF MY STAFF WORKING UNDER MY PERSONAL SUPERVISION.

SUBMITTED BY Rick A. Klumpp DATE 12-9-08
 COUNTY ENGINEER
 LICENSE NO. 062-032961
 LIC. EXPIRES 11/30/2009

APPROVED <u>Dorinda G</u>	2008
<u>Rick A. Klumpp</u>	COUNTY ENGINEER
PASSED <u>March 31</u>	2009
<u>Ross Ackerman</u>	DISTRICT ENGINEER OF CONSTRUCTION
PASSED <u>MARCH 31</u>	2009
<u>Tom J. J.</u>	DISTRICT ENGINEER OF LOCAL ROADS AND STREETS
RELEASING FOR BID BASED ON LIMITED REVIEW <u>MARCH 31</u>	2009
<u>Roger & Dinkell</u>	DEPUTY DIRECTOR OF HIGHWAYS REGION FOUR ENGINEER
STATE OF ILLINOIS DEPARTMENT OF TRANSPORTATION	

COUNTY	ROUTE	SECTION	TOTAL SHEETS	SHEET NO.
ADAMS	FAS 2592	08-00207-00-RS	15	2
SUMMARY OF QUANTITIES - GENERAL NOTES				
PROJECT NO. RS-2592(102)				

GENERAL NOTES

1. WHERE SECTION OR SUB-SECTION STONES, USGS BENCH MARK MONUMENTS, AND U.S. ARMY CORPS OF ENGINEERS SURVEY MARKERS ARE ENCOUNTERED, THE ENGINEER SHALL BE NOTIFIED BEFORE SUCH STONES AND MONUMENTS ARE REMOVED. THE CONTRACTOR SHALL PROTECT AND CAREFULLY PRESERVE ALL PROPERTY MARKS UNTIL AN OWNER, AN AUTHORIZED SURVEYOR OR THEIR REPRESENTATIVE HAS WITNESSED OR OTHERWISE REFERENCED THE PROPERTY MARKS LOCATION.
2. ALL PRIVATELY OWNED UTILITIES, UNLESS OTHERWISE SPECIFIED, WILL BE MOVED BY THEIR RESPECTIVE OWNERS WHERE REQUIRED. THE FOLLOWING UTILITY COMPANIES HAVE FACILITIES WITHIN THE LIMITS OF CONSTRUCTION:

 J.U.L.I.E.
 ADAMS RURAL ELECTRICAL CO-OP
 ADAMS TELEPHONE
 ABS WATER DISTRICT
3. THE NOMINAL THICKNESS FOR THE LEVELING BINDER, SURFACE COURSES AND AGGREGATE SHOULDERS ARE SHOWN ON THE TYPICAL SECTIONS, STANDARDS, SCHEDULES OR SPECIAL DETAILS. THE CONSTRUCTED THICKNESS OF THE ABOVE ITEMS SHALL NOT BE LESS THAN 90% OF THE NOMINAL THICKNESS AT ANY LOCATION. THE THICKNESS OF THE HOT-MIX ASPHALT MIXTURE SHOWN ON THE PLANS IS THE NOMINAL THICKNESS. DEVIATIONS FROM THE NOMINAL THICKNESS WILL BE PERMITTED WHEN SUCH DEVIATIONS OCCUR DUE TO IRREGULARITIES IN THE EXISTING SURFACE OR BASE WHICH THE HOT-MIX ASPHALT MIXTURE IS PLACED.
4. THE CONTRACTOR SHALL BE RESPONSIBLE FOR DETERMINING THE LOCATION AND ELEVATION OF ALL EXISTING UTILITIES AND TO NOTIFY ALL UTILITY COMPANIES PRIOR TO THE BEGINNING OF CONSTRUCTION. THIS WILL BE CONSIDERED INCIDENTAL TO THE CONTRACT.
5. APPLICATION RATES SHALL BE AS FOLLOWS UNLESS OTHERWISE SPECIFIED BY THE ENGINEER:

 HOT-MIX ASPHALT MIXTURES
 112 LBS PER SQUARE YARD
 BITUMINOUS MATERIALS (PRIME COAT)
 0.05-0.10 GALLON PER SQUARE YARD ON PCC OR BITUMINOUS CONCRETE
 0.25-0.35 GALLON PER SQUARE YARD ON AGGREGATE
 AGGREGATE (PRIME COAT)
 4 LBS PER SQUARE YARD
6. PERMANENT & TEMPORARY PAVEMENT MARKING TO BE DONE BY OTHERS. SHORT TERM PAVEMENT MARKING IS INCLUDED IN THE CONTRACT. THE REMOVAL OF THE SHORT TERM PAVEMENT MARKING TAPE WILL BE DONE BY OTHERS UPON COMPLETION OF THE PERMANENT PAVEMENT MARKING.

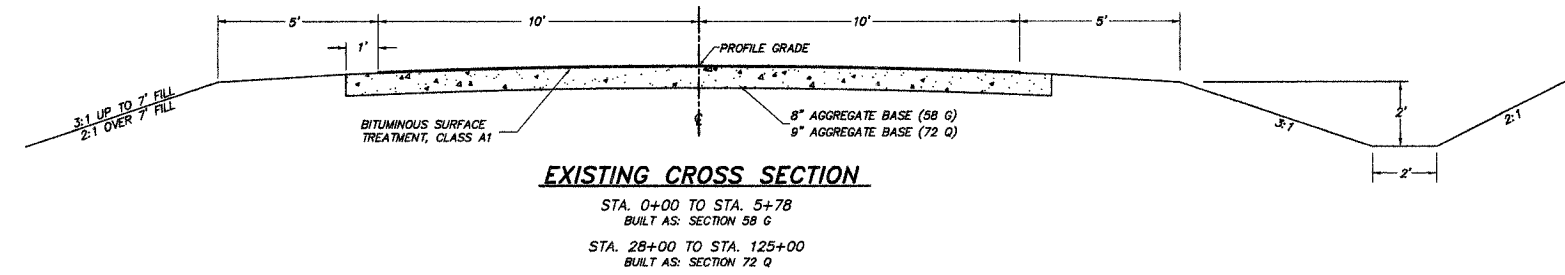
SUMMARY OF QUANTITIES

QUANTITY	UNIT	ITEM	CODE NO.	SPECIAL PROVISIONS
6,560	GALLON	BITUMINOUS MATERIALS (PRIME COAT)	40600100	*
131	TON	AGGREGATE (PRIME COAT)	40600300	
3,515	TON	LEVELING BINDER (MACHINE METHOD), N50	40600625	*
1	EACH	CONSTRUCTING TEST STRIP	40600895	
305	SQ. YD.	HOT-MIX ASPHALT SURFACE REMOVAL - BUTT JOINT	40600982	*
60	SQ. YD.	TEMPORARY RAMP	40600990	
147	TON	HOT-MIX ASPHALT SURFACE COURSE, MIX "C", N50	40603310	*
5,630	TON	POLYMERIZED HOT-MIX ASPHALT SURFACE COURSE, MIX "C", N50	40603510	*
1	L. SUM	MOBILIZATION	67100100	
1	L. SUM	TRAFFIC CONTROL AND PROTECTION	70101700	*
2,556	FOOT	SHORT TERM PAVEMENT MARKING	70300100	*

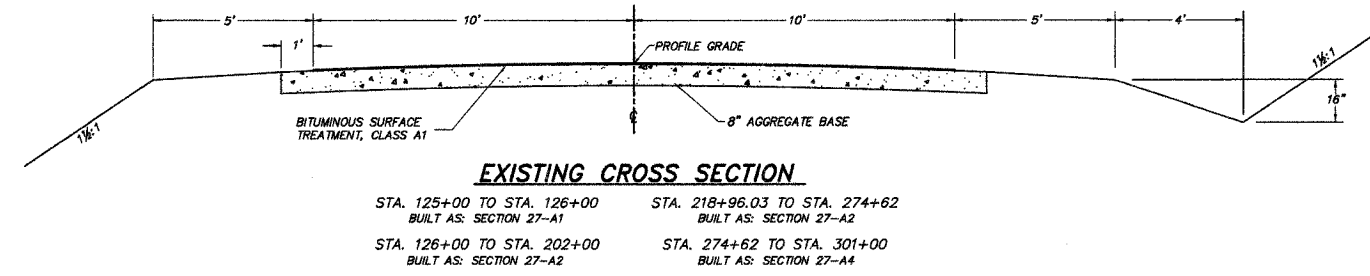
CONSTRUCTION TYPE CODE: I000

COUNTY	ROUTE	SECTION	SHEET NO.	TOTAL SHEETS
ADAMS	FAS 2592	08-00207-00-RS	15	3
TYPICAL CROSS SECTIONS				
PROJECT NO. RS-2592(102)				

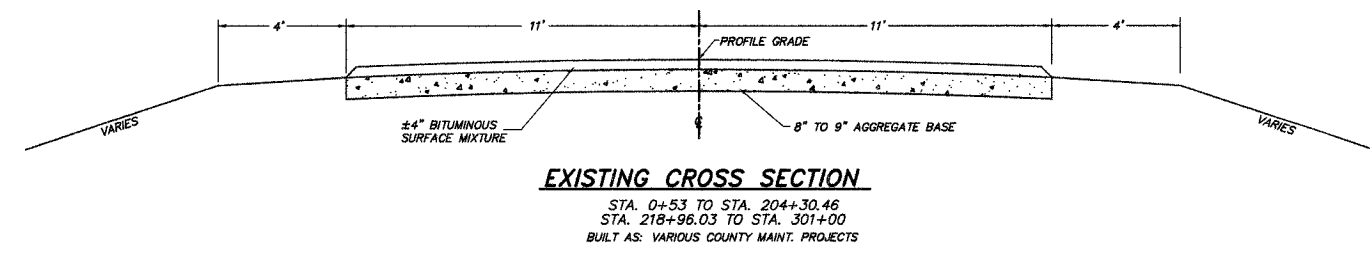
TYPICAL CROSS SECTIONS



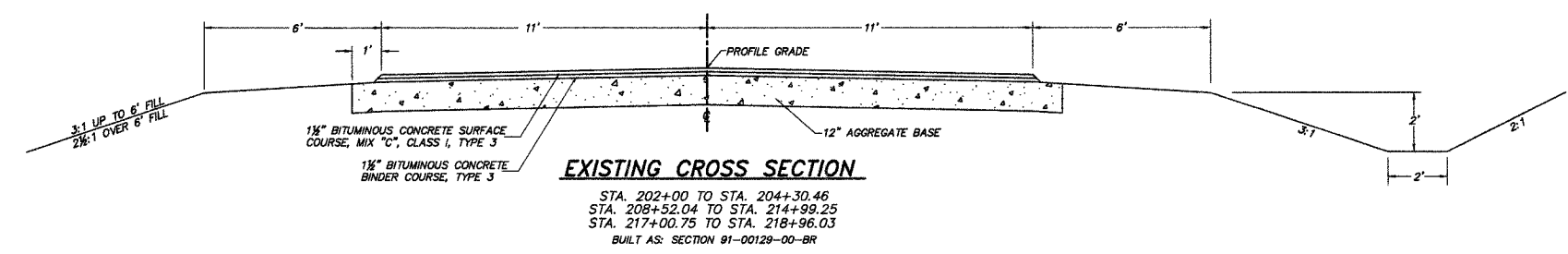
EXISTING CROSS SECTION
 STA. 0+00 TO STA. 5+78
 BUILT AS: SECTION 58 G
 STA. 28+00 TO STA. 125+00
 BUILT AS: SECTION 72 Q



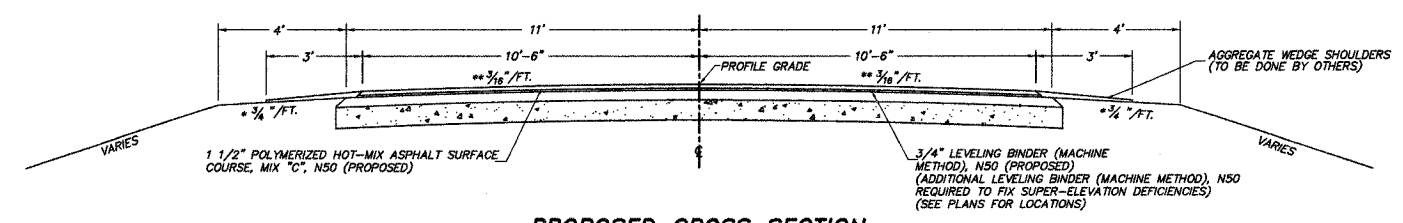
EXISTING CROSS SECTION
 STA. 125+00 TO STA. 126+00
 BUILT AS: SECTION 27-A1
 STA. 126+00 TO STA. 202+00
 BUILT AS: SECTION 27-A2
 STA. 218+96.03 TO STA. 274+62
 BUILT AS: SECTION 27-A2
 STA. 274+62 TO STA. 301+00
 BUILT AS: SECTION 27-A4



EXISTING CROSS SECTION
 STA. 0+53 TO STA. 204+30.46
 STA. 218+96.03 TO STA. 301+00
 BUILT AS: VARIOUS COUNTY MAINT. PROJECTS



EXISTING CROSS SECTION
 STA. 202+00 TO STA. 204+30.46
 STA. 208+52.04 TO STA. 214+99.25
 STA. 217+00.75 TO STA. 218+96.03
 BUILT AS: SECTION 91-00129-00-BR

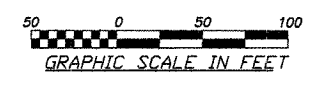


PROPOSED CROSS SECTION

* THE ALGEBRAIC DIFFERENCE BETWEEN THE SHOULDER SLOPE AND THE PAVEMENT SLOPE SHALL NOT EXCEED 10%
 ** CROWN DOES NOT APPLY IN AREA OF SUPER-ELEVATION OR SUPER-ELEVATION TRANSITION.

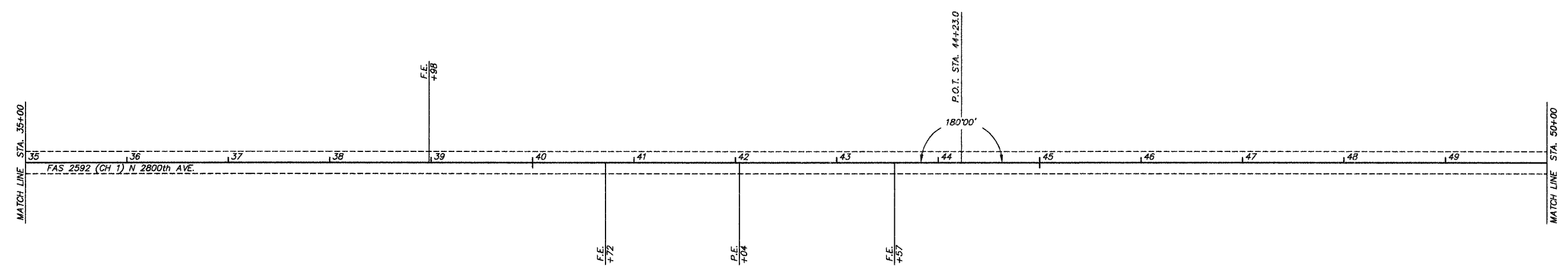
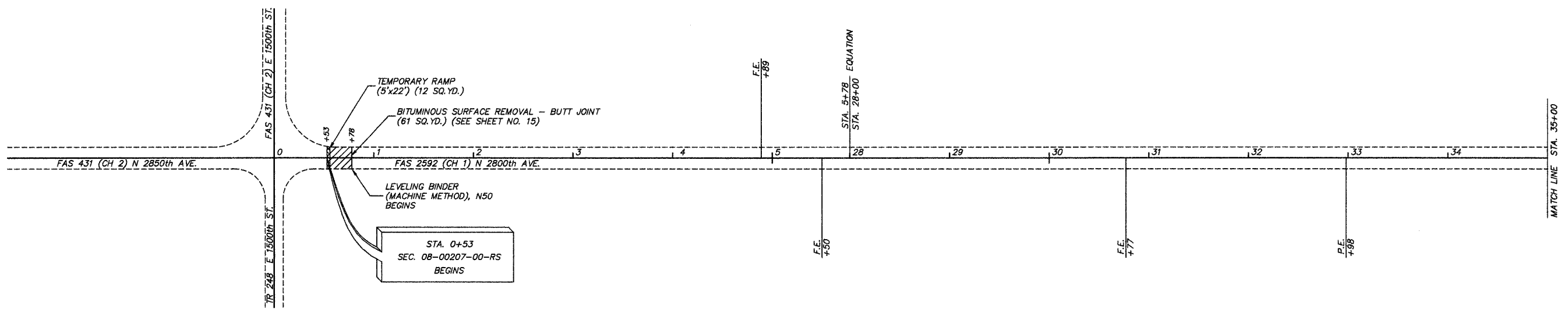
HOT-MIX ASPHALT MIXTURE REQUIREMENTS

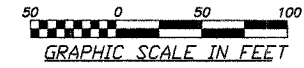
ITEM	ASPHALT GRADE	AGG. COMPOSITION	VOIDS
POLY. SURFACE	SBS PG 64-28	II-8.5 or 12.5 MIX C	4.0% @ NSO
SURFACE	PG 58-22	II-8.5 or 12.5 MIX C	4.0% @ NSO
LEVELING BINDER	PG 58-22	II-8.5	4.0% @ NSO



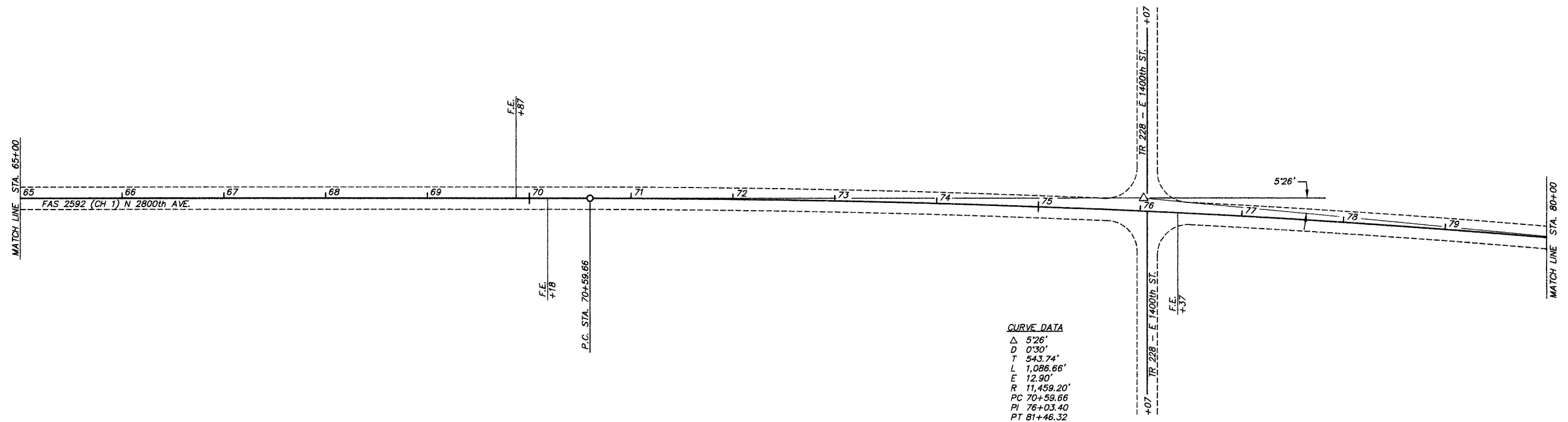
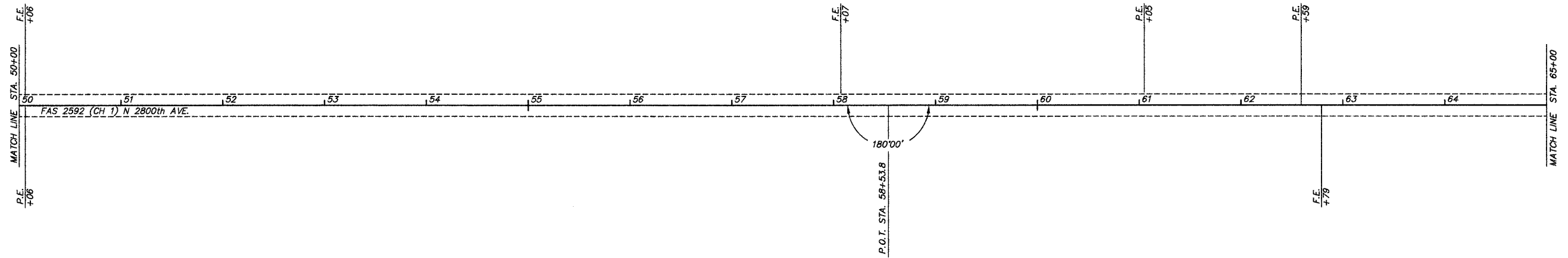
COUNTY	ROUTE	SECTION	TOTAL SHEETS	SHEET NO.
ADAMS	FAS 2592	08-00207-00-RS	15	4

STATION 0+00 TO STATION 50+00
PROJECT NO. RS-2592(102)

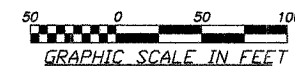




COUNTY	ROUTE	SECTION	TOTAL SHEETS	SHEET NO.
ADAMS	FAS 2592	08-00207-00-RS	15	5
STATION 50+00 TO STATION 80+00				
PROJECT NO. RS-2592(102)				



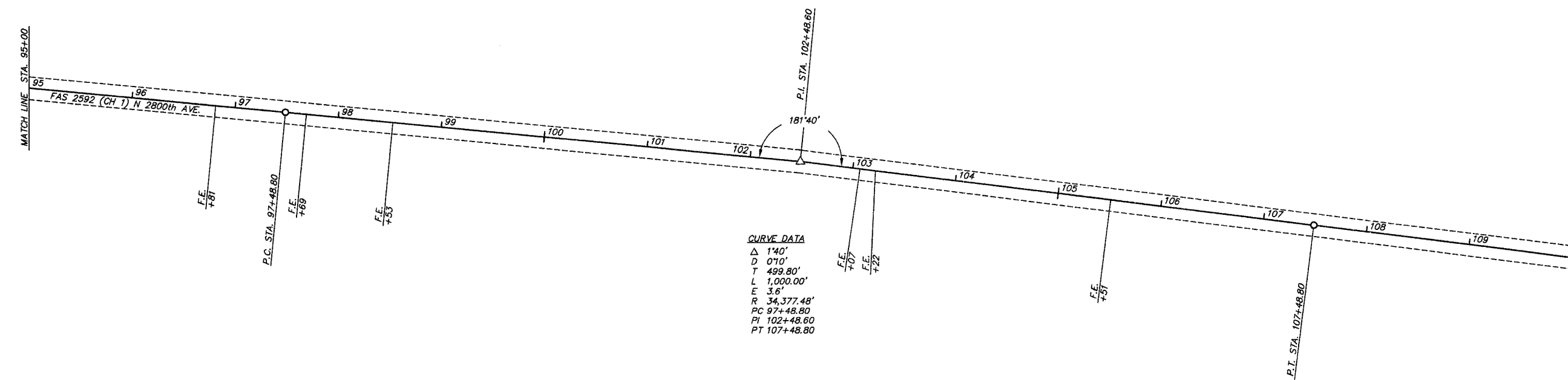
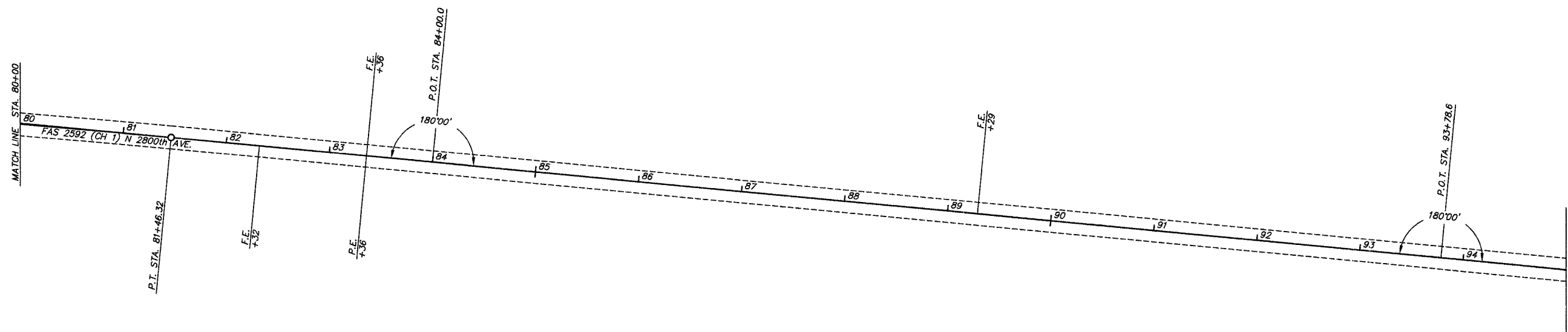
CURVE DATA
 Δ 5'26"
 D 0'30"
 T 543.74'
 L 1,086.66'
 E 12.90'
 R 11,459.20'
 PC 70+59.66
 PI 76+03.40
 PT 81+46.32



COUNTY	ROUTE	SECTION	TOTAL SHEETS	SHEET NO.
ADAMS	FAS 2592	08-00207-00-RS	15	6

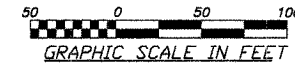
STATION 80+00 TO STATION 110+00

PROJECT NO. RS-2592(102)

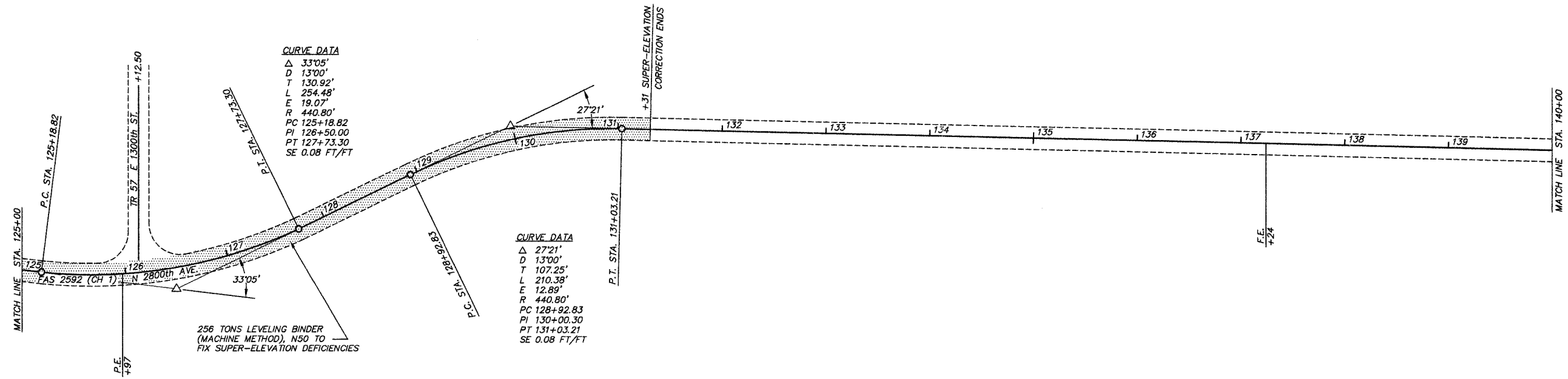
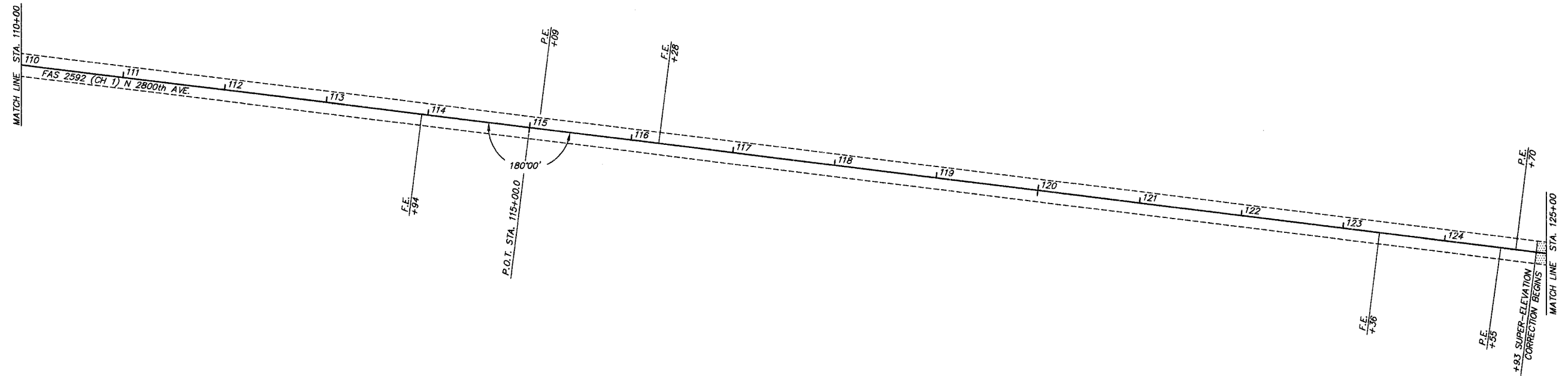


CURVE DATA
 Δ 1'40"
 D 0'10"
 T 499.80'
 L 1,000.00'
 E 3.6'
 R 34,377.48'
 PC 97+48.80
 PI 102+48.80
 PT 107+48.80





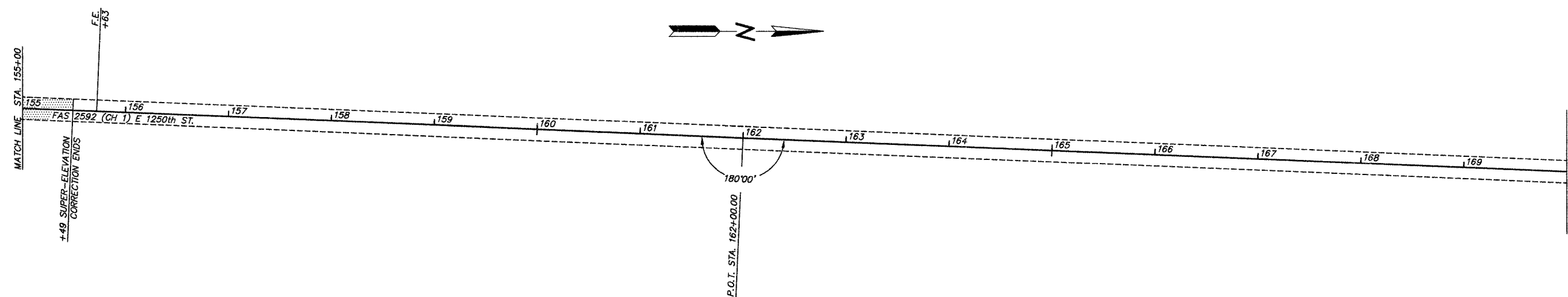
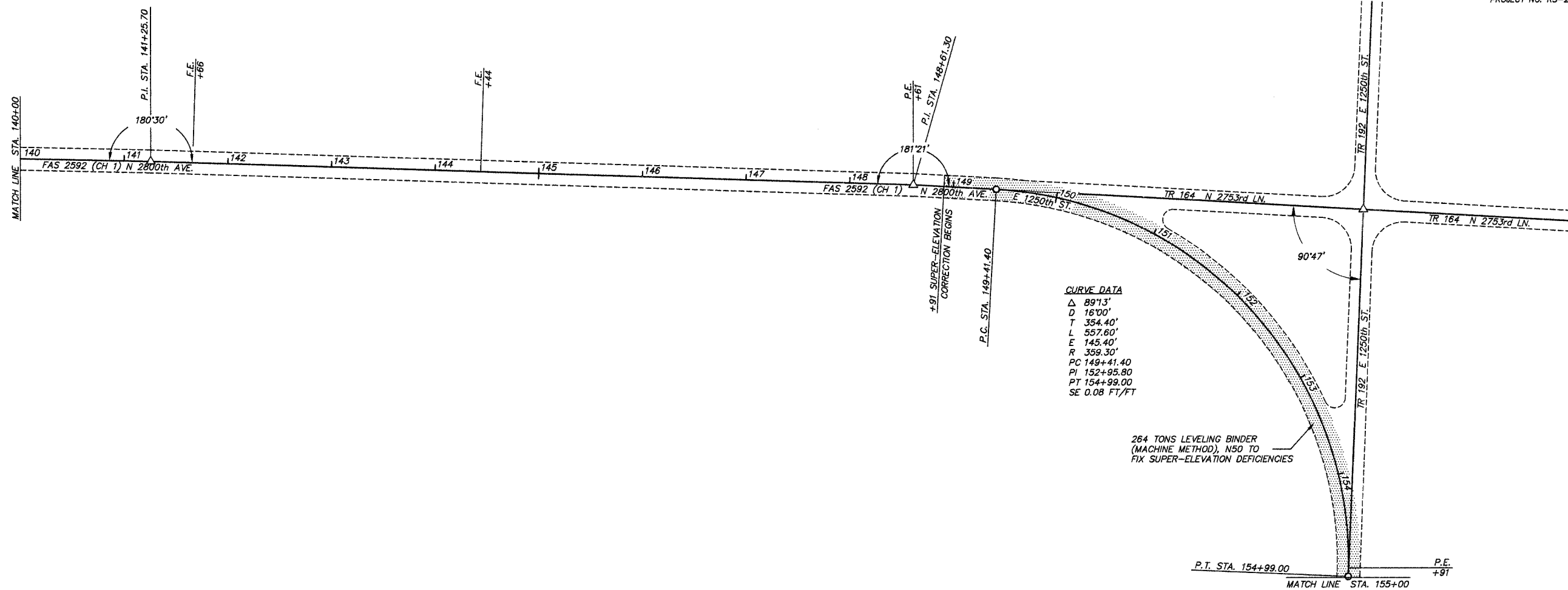
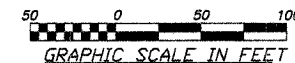
COUNTY	ROUTE	SECTION	TOTAL SHEETS	SHEET NO.
ADAMS	FAS 2592	08-00207-00-RS	15	7
STATION 110+00 TO STATION 140+00				
PROJECT NO. RS-2592(102)				

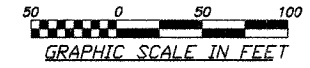


COUNTY	ROUTE	SECTION	TOTAL SHEETS	SHEET NO.
ADAMS	FAS 2592	08-00207-00-RS	15	8

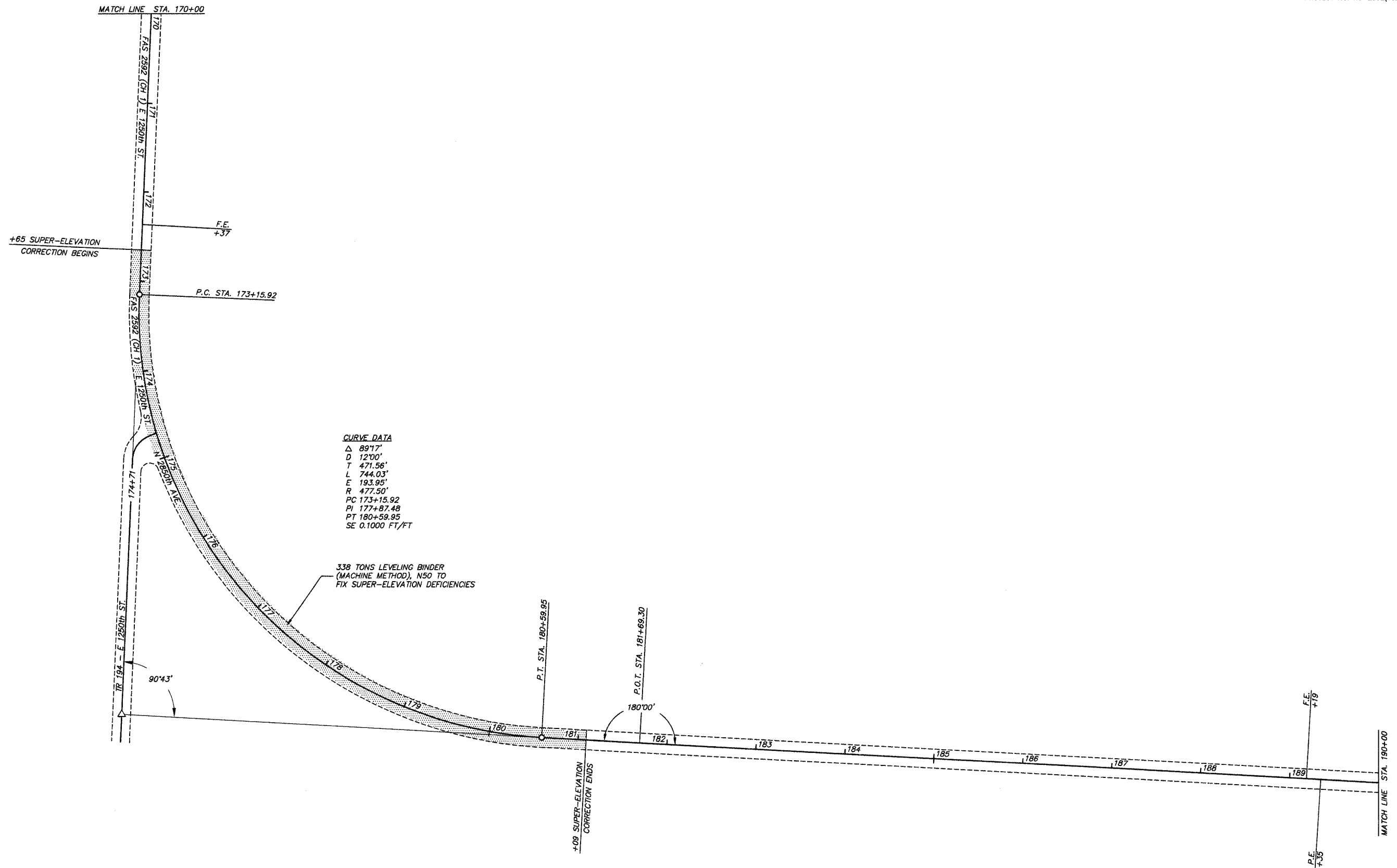
STATION 140+00 TO STATION 170+00

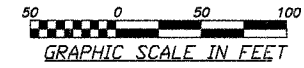
PROJECT NO. RS-2592(102)



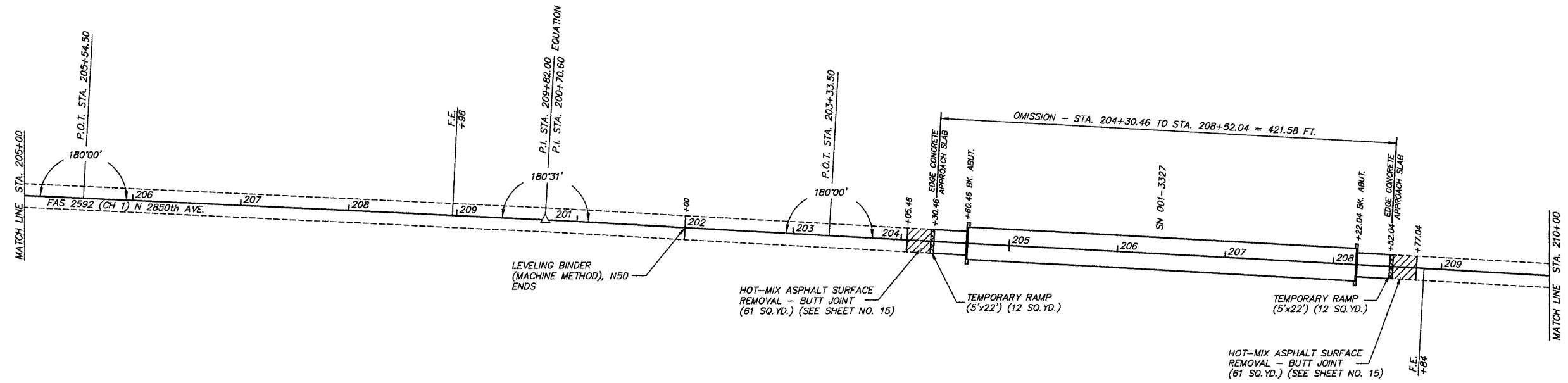
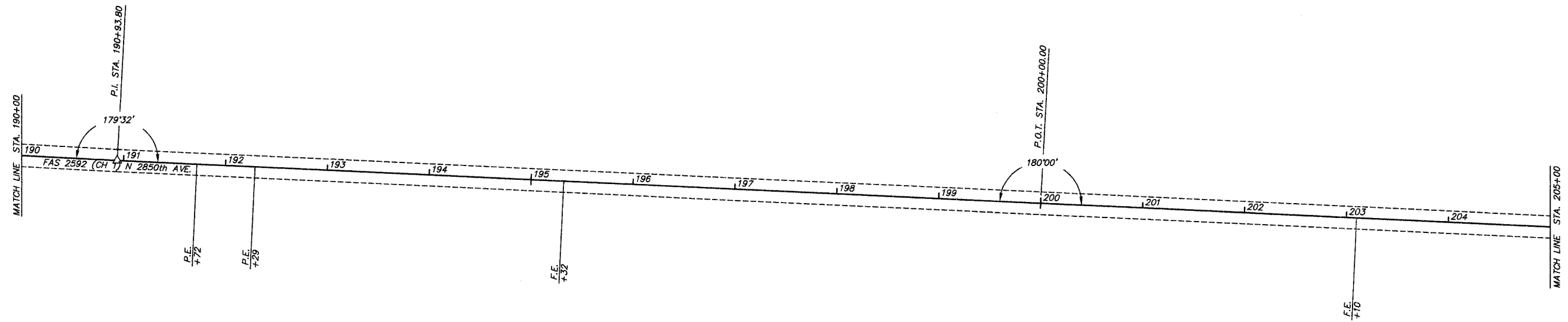


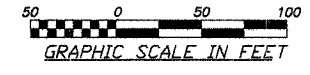
COUNTY	ROUTE	SECTION	TOTAL SHEETS	SHEET NO.
ADAMS	FAS 2592	08-00207-00-RS	15	9
STATION 170+00 TO STATION 190+00				
PROJECT NO. RS-2592(102)				



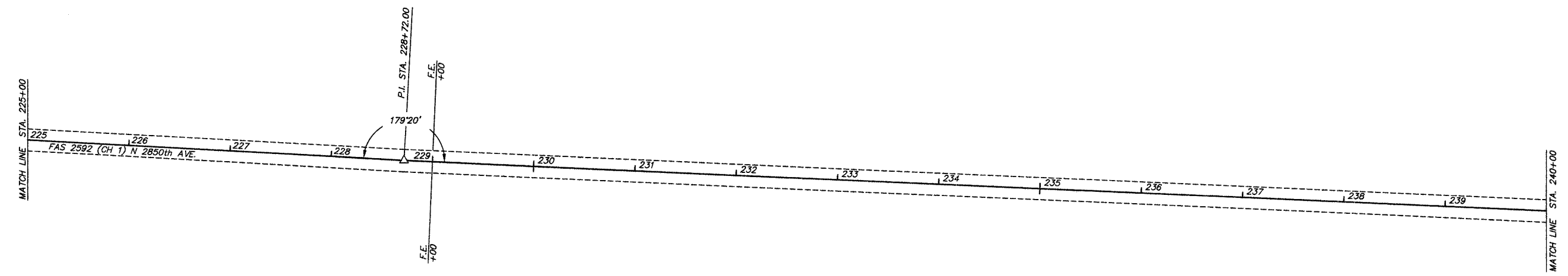
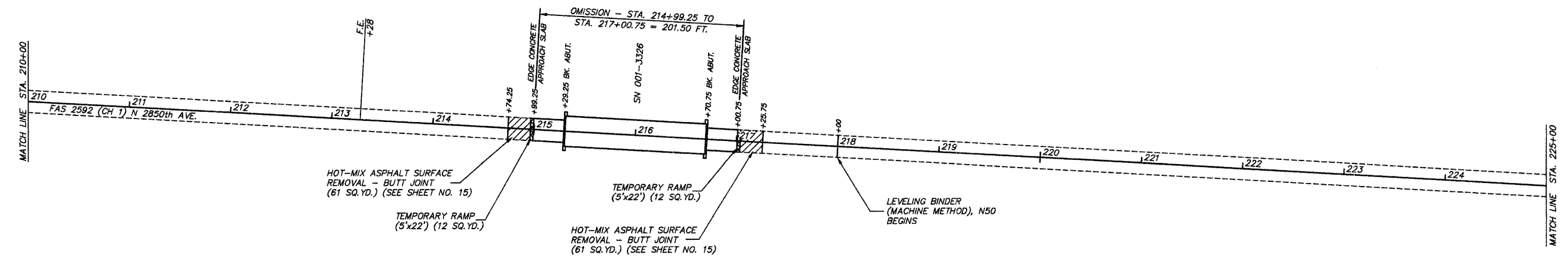


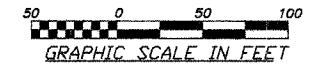
COUNTY	ROUTE	SECTION	TOTAL SHEETS	SHEET NO.
ADAMS	FAS 2592	08-00207-00-RS	15	10
STATION 190+00 TO STATION 210+00				
PROJECT NO. RS-2592(102)				





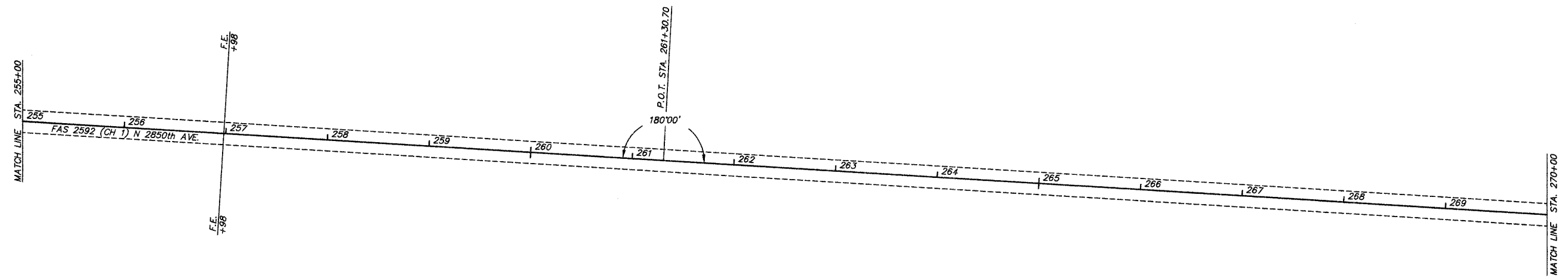
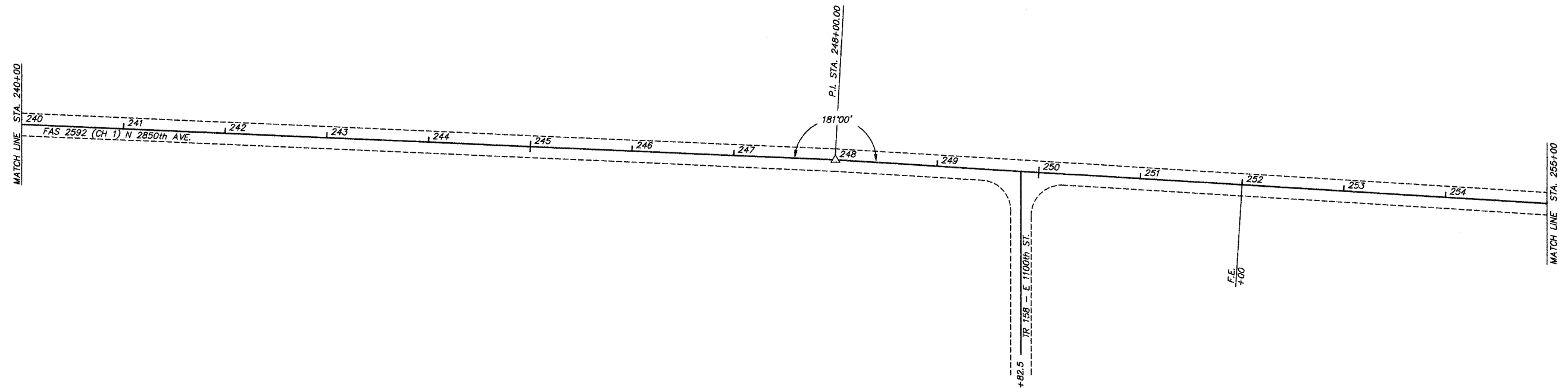
COUNTY	ROUTE	SECTION	TOTAL SHEETS	SHEET NO.
ADAMS	FAS 2592	08-00207-00-RS	15	11
STATION 210+00 TO STATION 240+00				
PROJECT NO. RS-2592(102)				

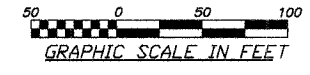




COUNTY	ROUTE	SECTION	TOTAL SHEETS	SHEET NO.
ADAMS	FAS 2592	08-00207-00-RS	15	12

STATION 240+00 TO STATION 270+00
PROJECT NO. RS-2592(102)

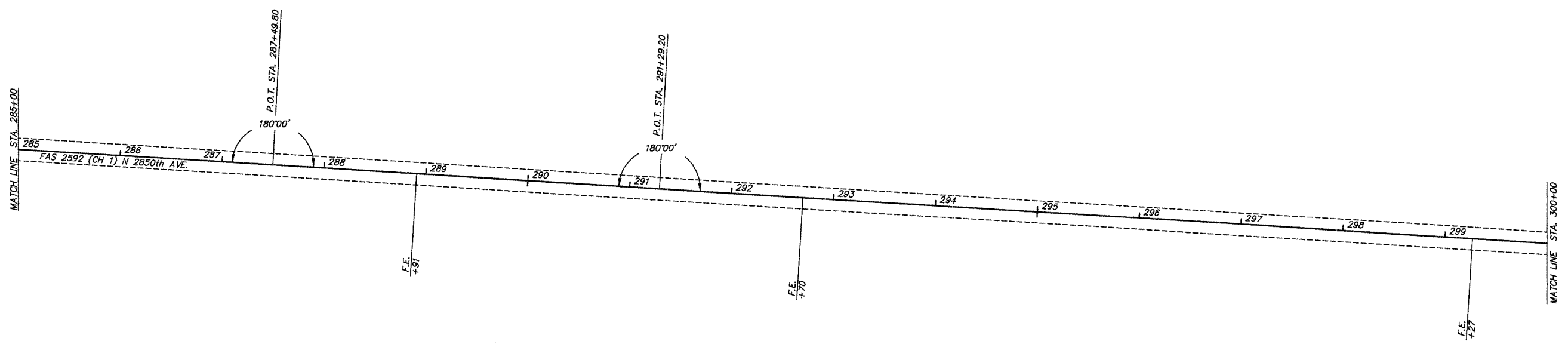
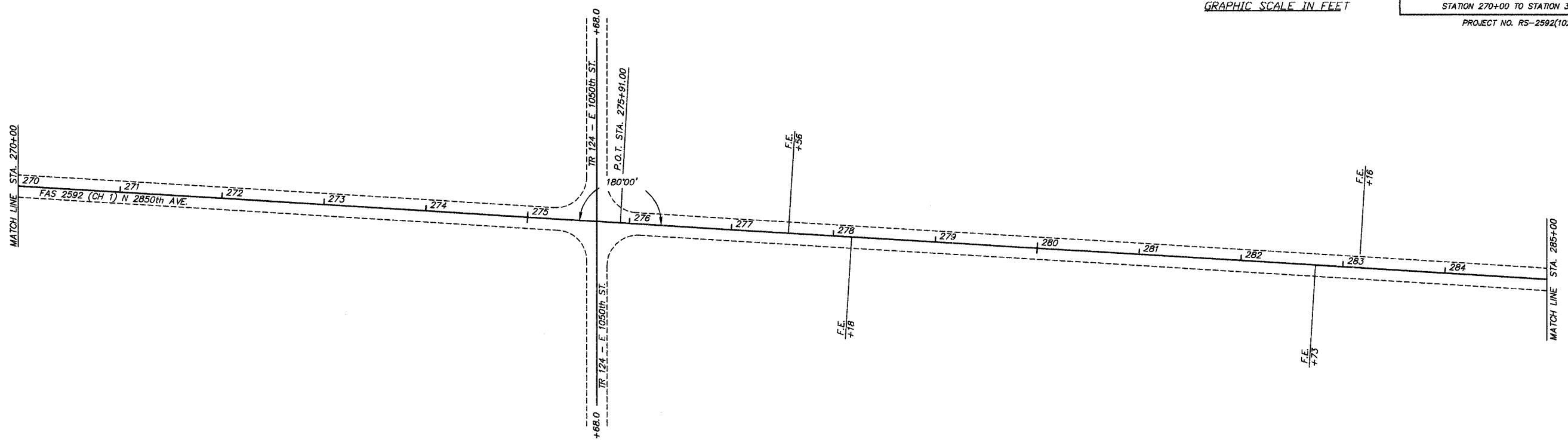


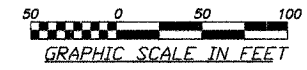


COUNTY	ROUTE	SECTION	TOTAL SHEETS	SHEET NO.
ADAMS	FAS 2592	08-00207-00-RS	15	13

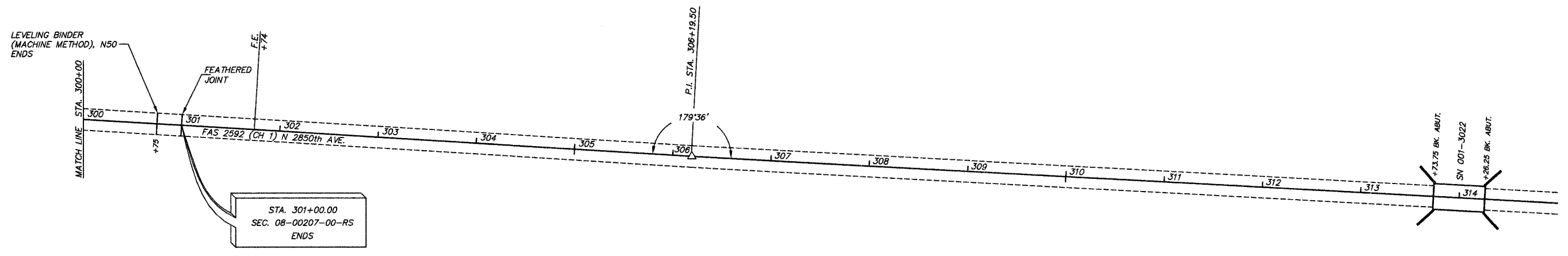
STATION 270+00 TO STATION 300+00

PROJECT NO. RS-2592(102)



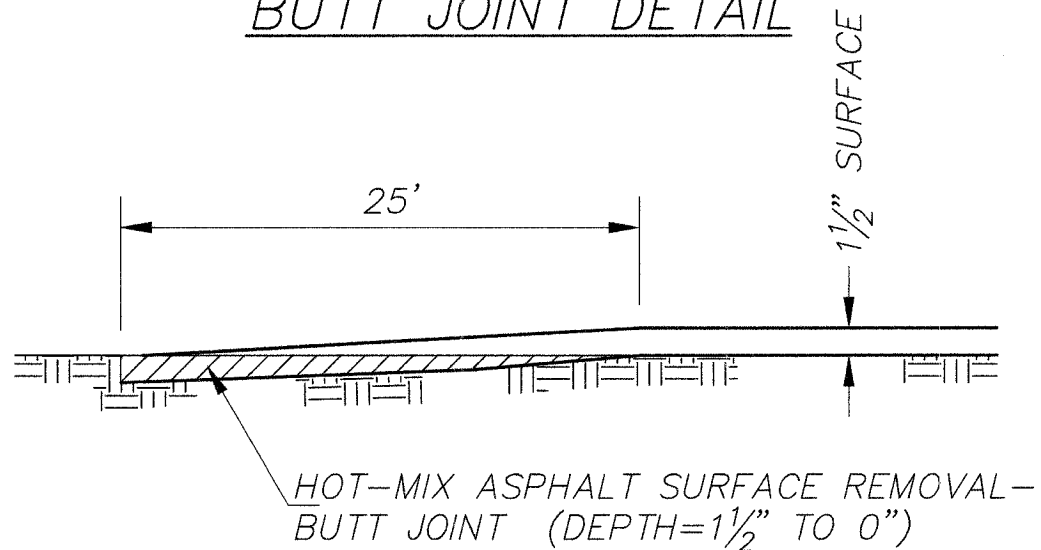


COUNTY	ROUTE	SECTION	TOTAL SHEETS	SHEET NO.
ADAMS	FAS 2592	08-00207-00-RS	15	14
STATION 300+00 TO STATION 315+00				
PROJECT NO. RS-2592(102)				



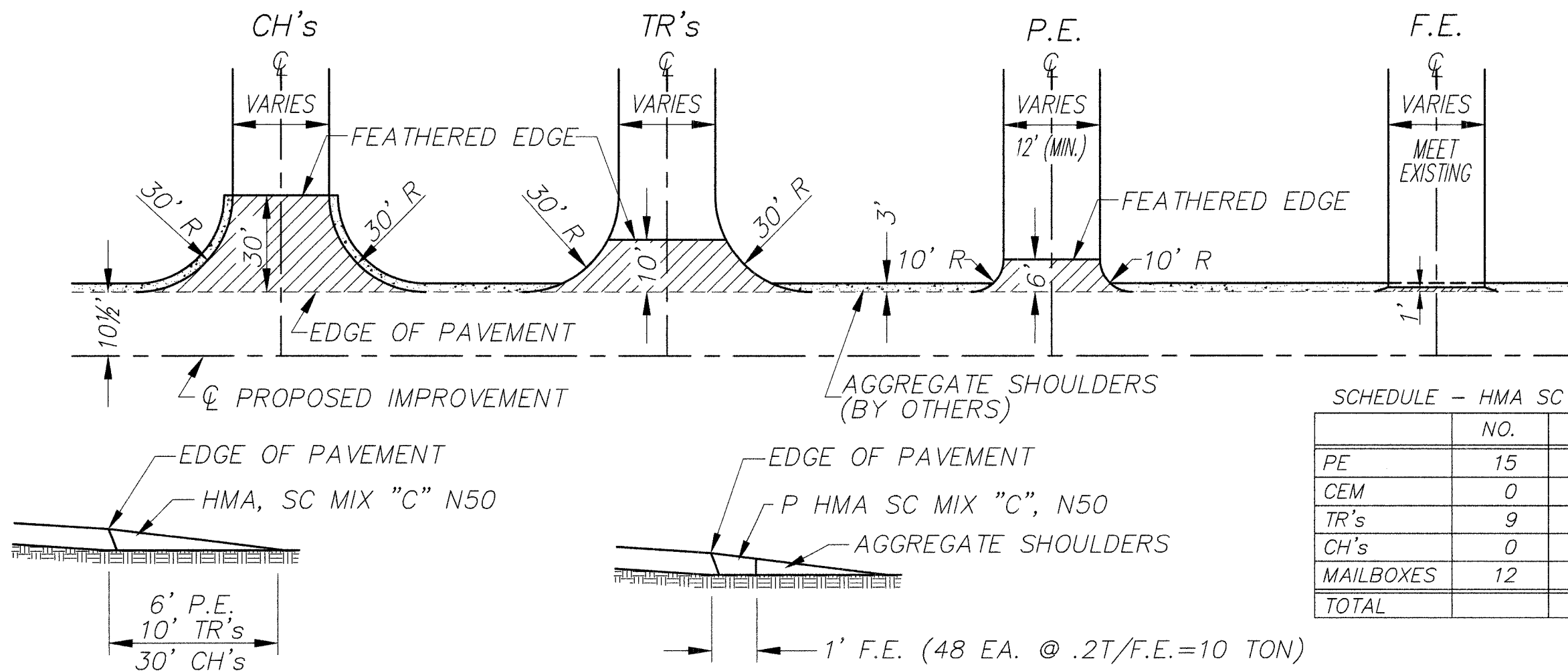
COUNTY	ROUTE	SECTION	TOTAL SHEETS	SHEET NO.
ADAMS	FAS 2592	08-00207-00-RS	15	15
BUTT JOINT DETAIL				
SIDE ROAD & ENTRANCE DETAILS				
PROJECT NO. RS-2592(102)				

BUTT JOINT DETAIL



INTERSECTION DETAILS

ENTRANCE DETAILS



SCHEDULE - HMA SC MIX "C" N50

	NO.	TONS/	TONS
PE	15	2	30
CEM	0	2	0
TR's	9	9	81
CH's	0	15	0
MAILBOXES	12	3	36
TOTAL			147