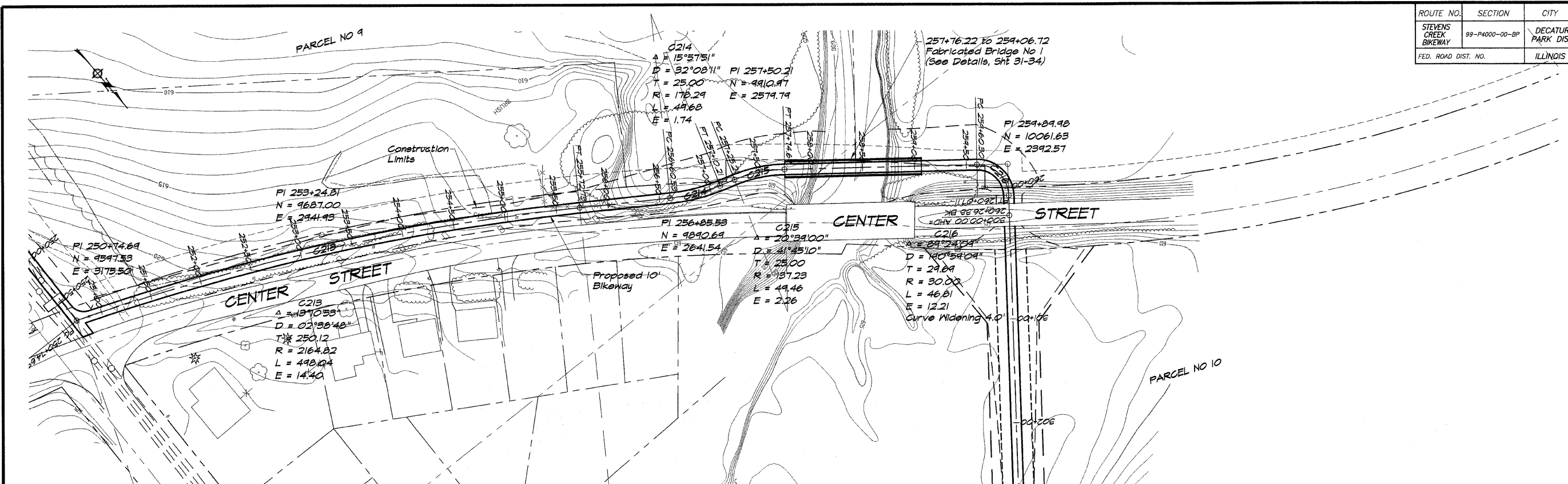
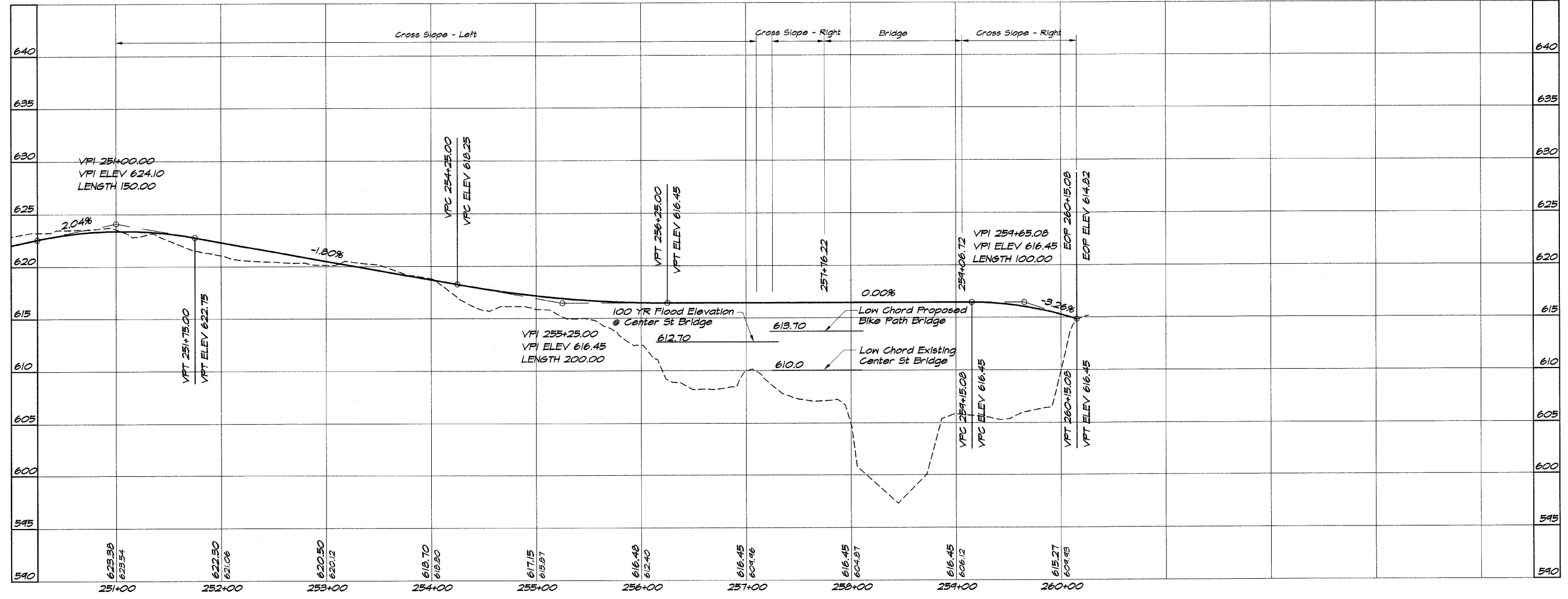


ROUTE NO.	SECTION	CITY	TOTAL SHEETS	SHEET NO.
STEVENS CREEK BIKEWAY	99-P4000-00-BP	DECATUR PARK DIST	145	13
FED. ROAD DIST. NO.	ILLINOIS		PROJECT TE-0007(27)	



BAINBRIDGE & ASSOCIATES, INC.
 Consulting Engineers
GEE MILANSKI
 180 SOUTH TAYLORVILLE ROAD
 DECATUR, ILLINOIS
 State License 194-011596

DESIGNED	SCALE	REVISIONS
MHP	1" = 50'	NO. BY DATE
DRWN	DATE	
P	May 2002	
FIELD BOOK	S&B NO.	
XXX	41044	



DECATUR PARK DISTRICT
STEVENS CREEK BIKEWAY - PHASE I
PLAN AND PROFILE
 STATION 251+00.00 TO 260+15.08