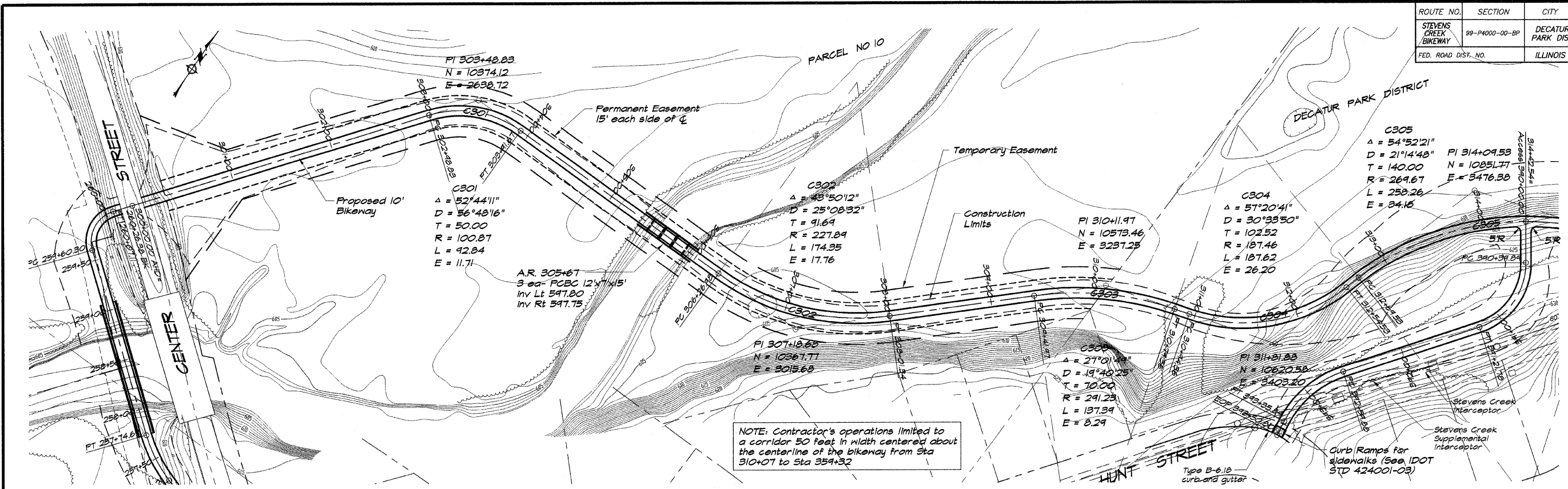
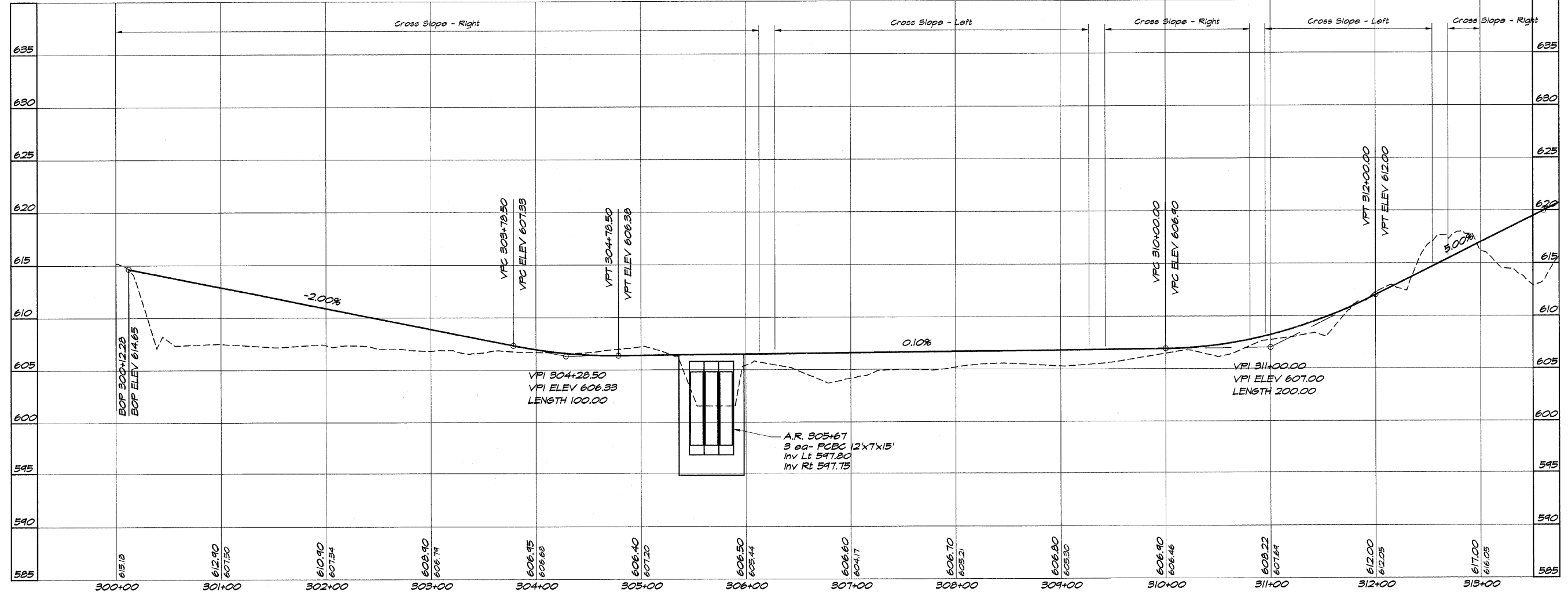


ROUTE NO.	SECTION	CITY	TOTAL SHEETS	SHEET NO.
STEVENS CREEK BIKEWAY	99-P4000-00-BP	DECATUR PARK DIST	145	14
FED. ROAD DIST. NO.		ILLINOIS	PROJECT TE-007(27)	



NOTE: Contractor's operations limited to a corridor 50 feet in width centered about the centerline of the bikeway from Sta 310+07 to Sta 359+32



BAINBRIDGE & ASSOCIATES, INC.
 Consulting Engineers
 MILWAUKEE
 110 SOUTH TAYLORVILLE ROAD
 DECATUR, ILLINOIS 62521
 Phone: (618) 486-0100

REVISIONS	SCALE	DESIGNED
NO. BY DATE	1" = 50'	DLW
	DATE	DRAWN
	May 2002	P. Mills
	608 NO.	FIELD BOOK
	49094	XXX

DECATUR PARK DISTRICT
STEVENS CREEK BIKEWAY - PHASE I
PLAN AND PROFILE
 STATION 300+00.00 TO 313+00.00