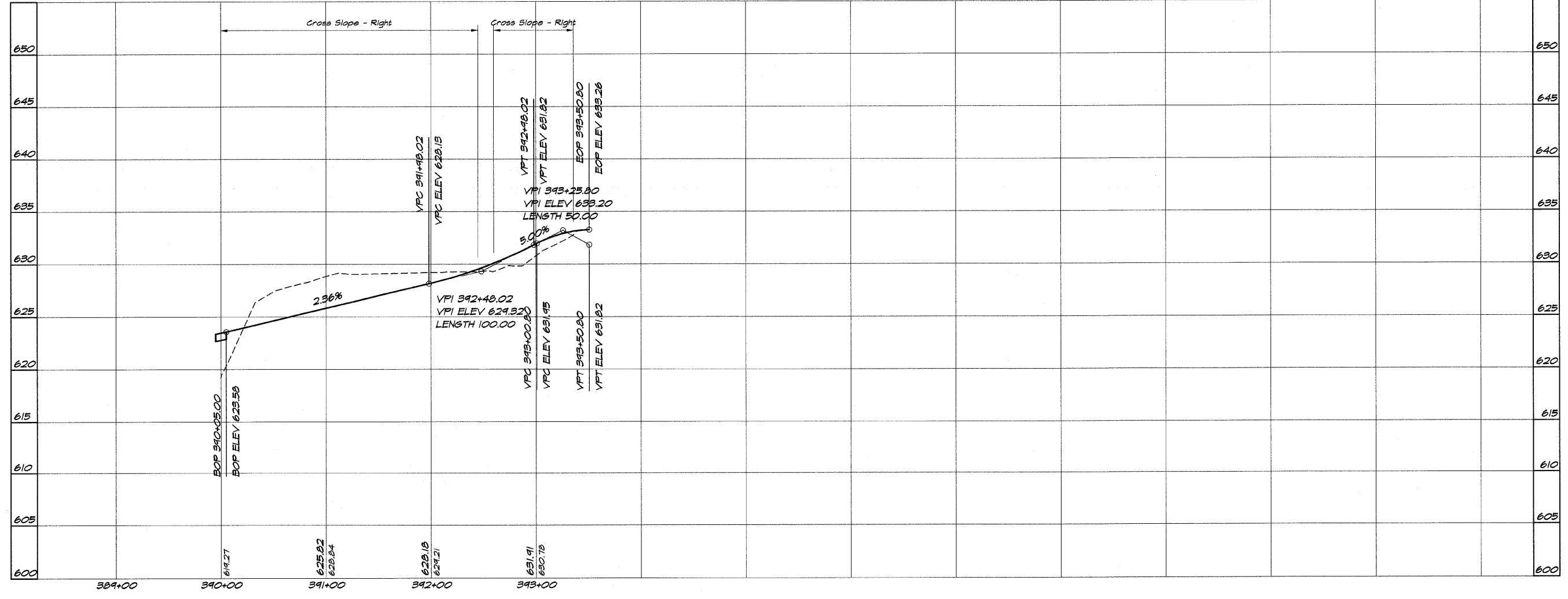
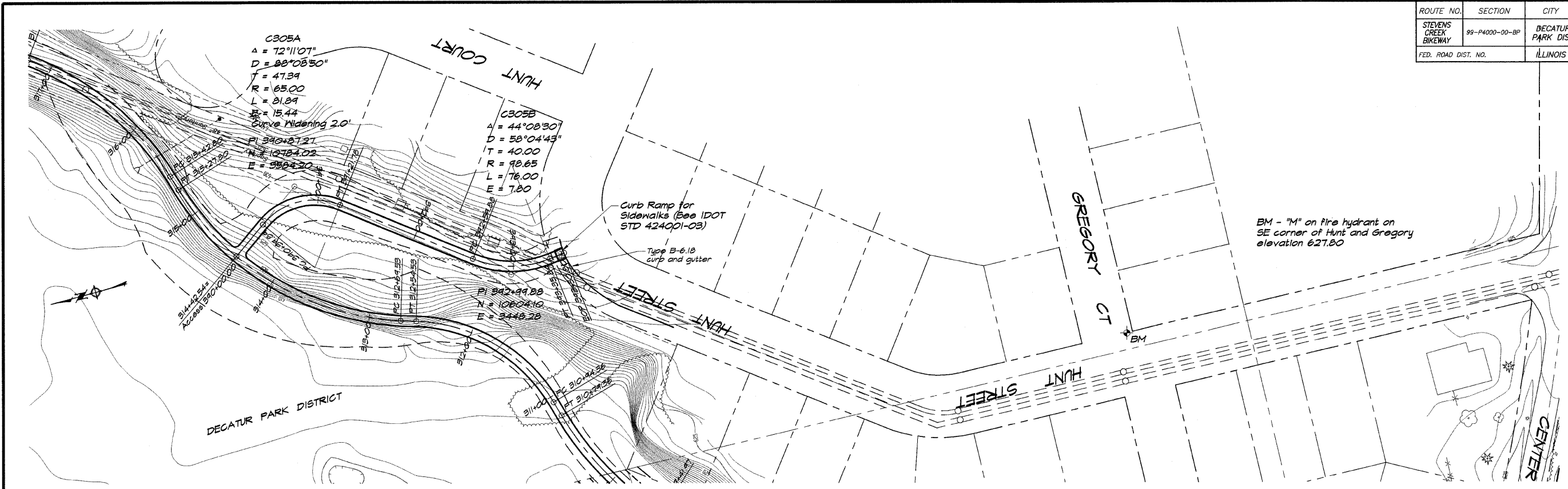


ROUTE NO.	SECTION	CITY	TOTAL SHEETS	SHEET NO.
STEVENS CREEK BIKEWAY	99-P4000-00-BP	DECATUR PARK DIST	145	15
FED. ROAD DIST. NO.			PROJECT TE-0007(27)	



BAINBRIDGE & ASSOCIATES, INC.
 Consulting Engineers
GEB
MILWAUKEE
 1435 SOUTH TAYLORVILLE ROAD
 DECATUR, ILLINOIS
 (From License 184-001256)

DESIGNED	SCALE	REVISIONS
DLN	1" = 50'	NO.
DRAWN	DATE	BY
P mll/s	May 2002	DATE
FIELD BOOK	JOB NO.	NO.
XXX	490494	DATE

DECATUR PARK DISTRICT
STEVENS CREEK BIKEWAY - PHASE I
PLAN AND PROFILE
 STATION 390+00.00 TO 393+50.80