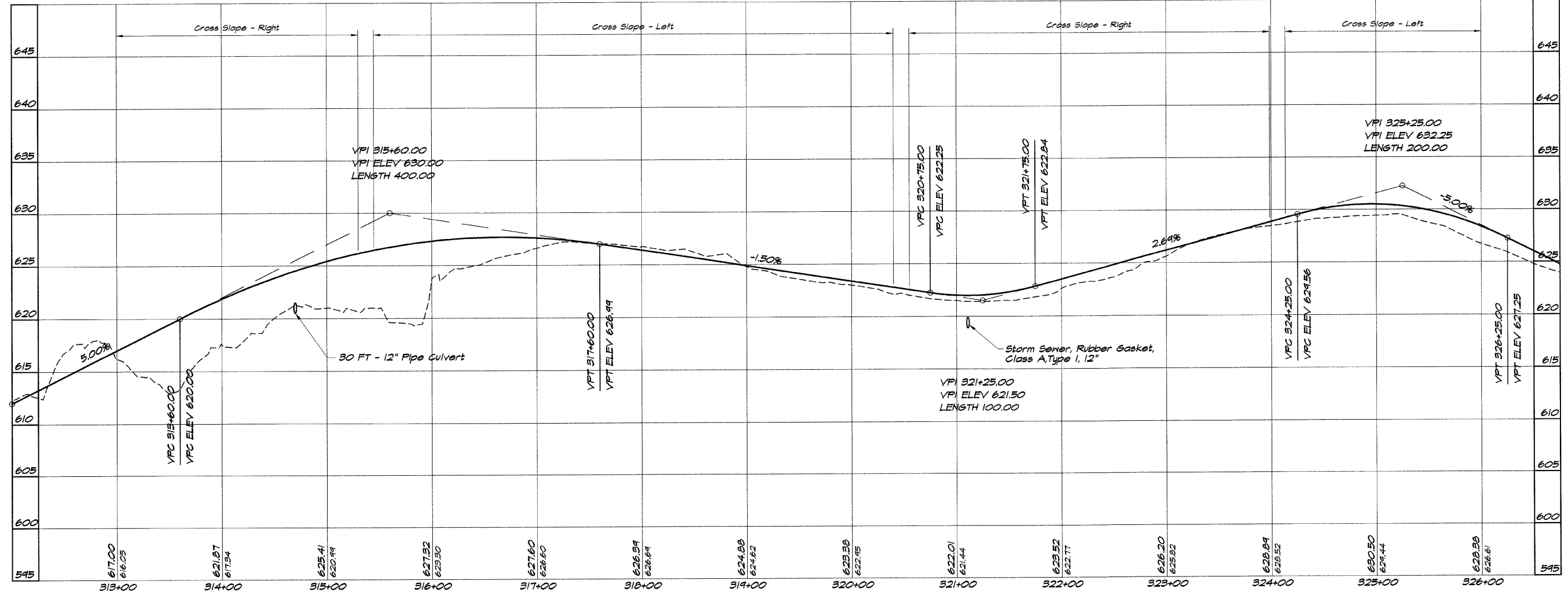
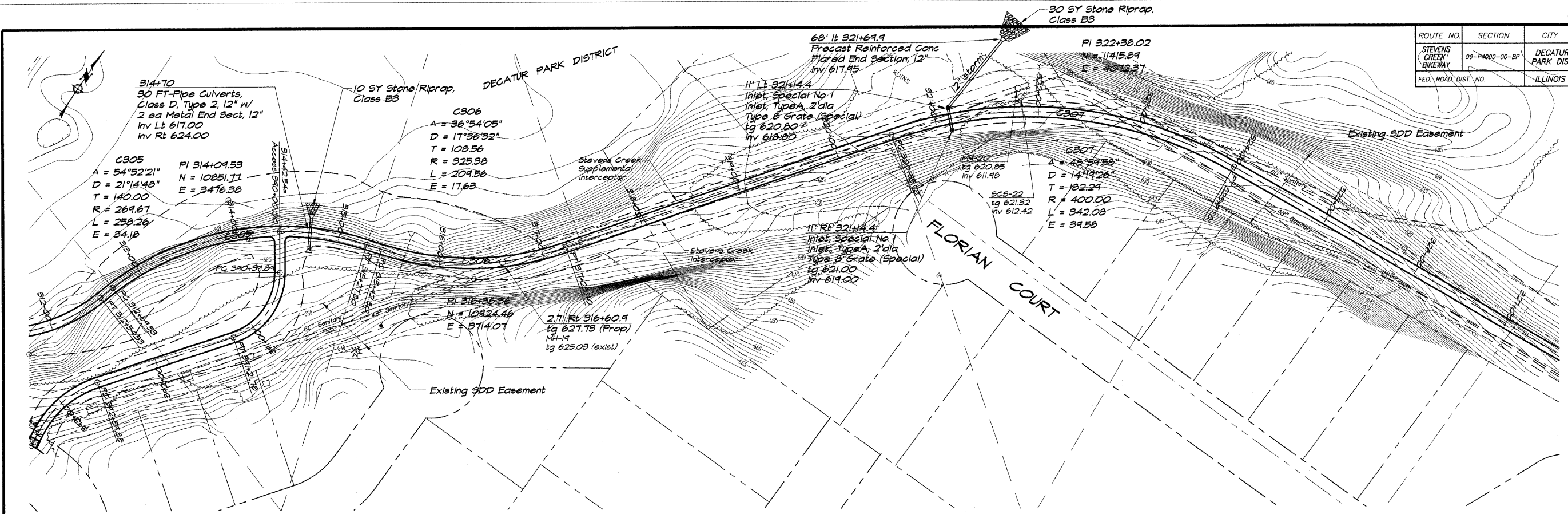


ROUTE NO.	SECTION	CITY	TOTAL SHEETS	SHEET NO.
STEVENS CREEK BIKEWAY	99-P4000-00-BP	DECATUR PARK DIST	145	16
FED. ROAD DIST. NO.	ILLINOIS		PROJECT TE-0007(27)	



BAINBRIDGE & ASSOCIATES, INC.
GEE MILANSKI
 Consulting Engineers
 100 SOUTH TAYLORVILLE ROAD
 DECATUR, ILLINOIS 62521
 (314) 399-1500

DESIGNED	SCALE	REVISIONS
DLW	1" = 50'	NO. BY DATE
PM/S	DATE	
FIELD BOOK	May 2002	
XXX	JOB NO. 49044	

DECATUR PARK DISTRICT
STEVENS CREEK BIKEWAY - PHASE I
PLAN AND PROFILE
 STATION 313+00.00 TO 326+00.00