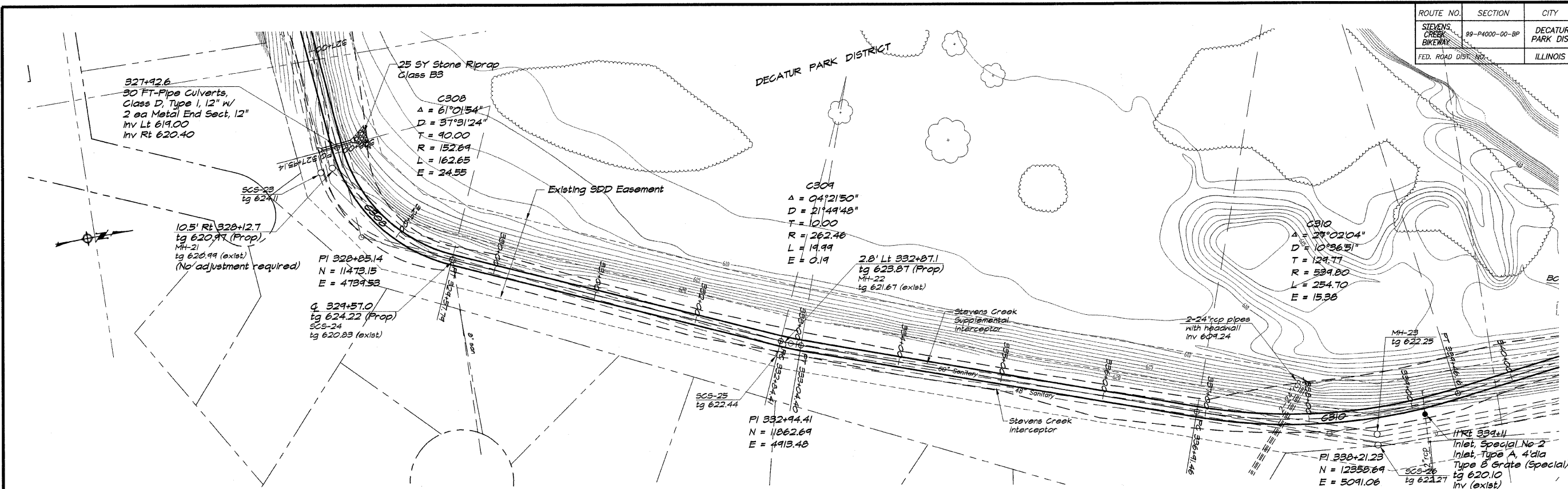


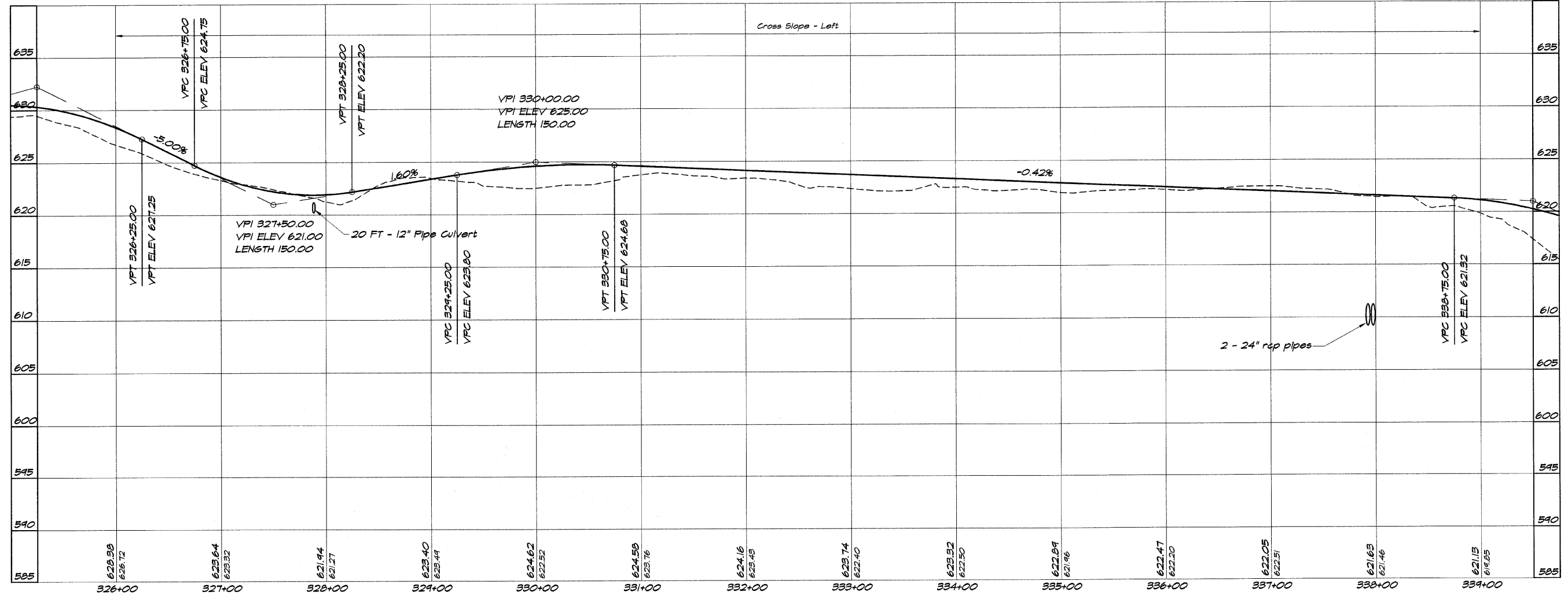
ROUTE NO.	SECTION	CITY	TOTAL SHEETS	SHEET NO.
STEVENS CREEK BIKEWAY	89-44000-00-BP	DECATUR PARK DIST	145	17
FED. ROAD DIST. NO.		ILLINOIS	PROJECT TE-0007(27)	



**BARNBRIDGE & ASSOCIATES, INC.**  
**G&B**  
**MULLINSKI**  
 Consulting Engineers  
 110 SOUTH TAYLORVILLE ROAD  
 DECATUR, ILLINOIS  
 License 154-010156

REVISIONS	NO.	BY	DATE

SCALE: 1" = 50'  
 DATE: May 2002  
 DESIGNED: P Mills  
 DRAWN: P Mills  
 FIELD BOOK: XXX  
 JOB NO.: 440494



**DECATUR PARK DISTRICT**  
**STEVENS CREEK BIKEWAY - PHASE I**  
**PLAN AND PROFILE**  
 STATION 326+00.00 TO 339+00.00