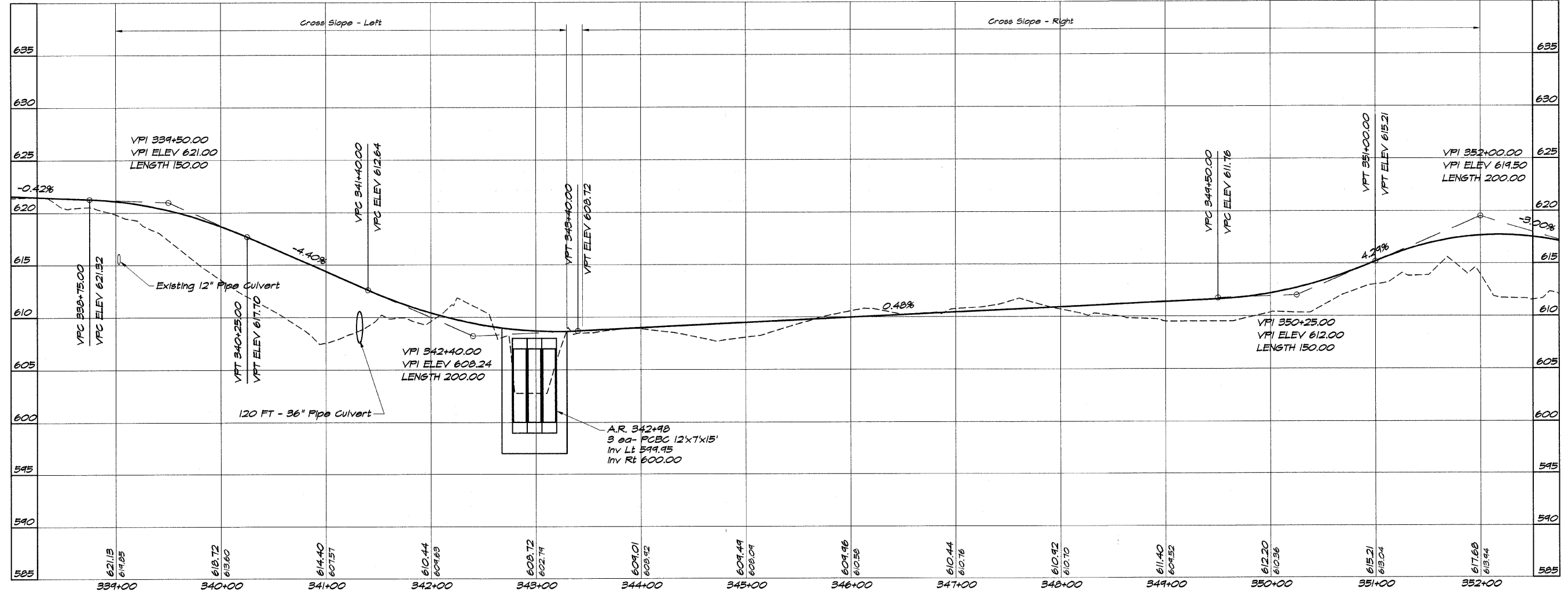
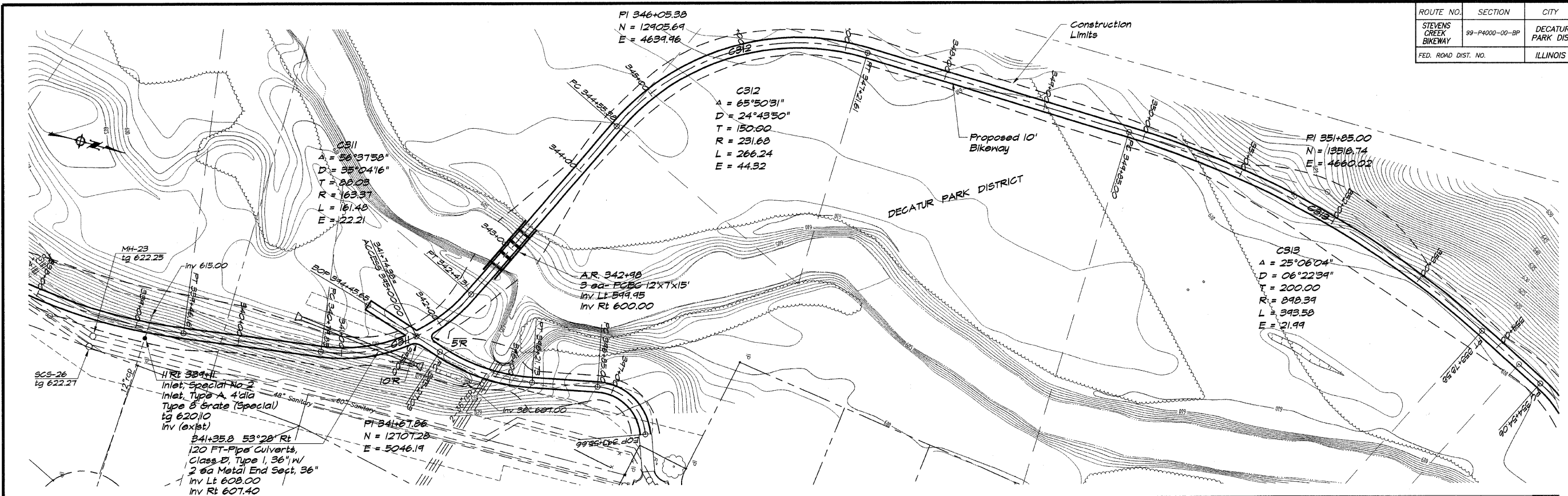


ROUTE NO.	SECTION	CITY	TOTAL SHEETS	SHEET NO.
STEVENS CREEK BIKEWAY	99-P4000-00-BP	DECATUR PARK DIST	145	18
FED. ROAD DIST. NO.	ILLINOIS		PROJECT TE-0007(27)	



BAINBRIDGE & ASSOCIATES, INC.
GEE MILAKSKI
 Consulting Engineers
 800 SOUTH TAVENHILL ROAD
 DECATUR, ILLINOIS
 License 154-001590

REVISIONS	NO.	BY	DATE
SCALE	1" = 50'		
DATE	May 2002		
FIELD BOOK	308 NO. 49044		

DECATUR PARK DISTRICT
STEVENS CREEK BIKEWAY - PHASE I
PLAN AND PROFILE
 STATION 339+00.00 TO 352+00.00