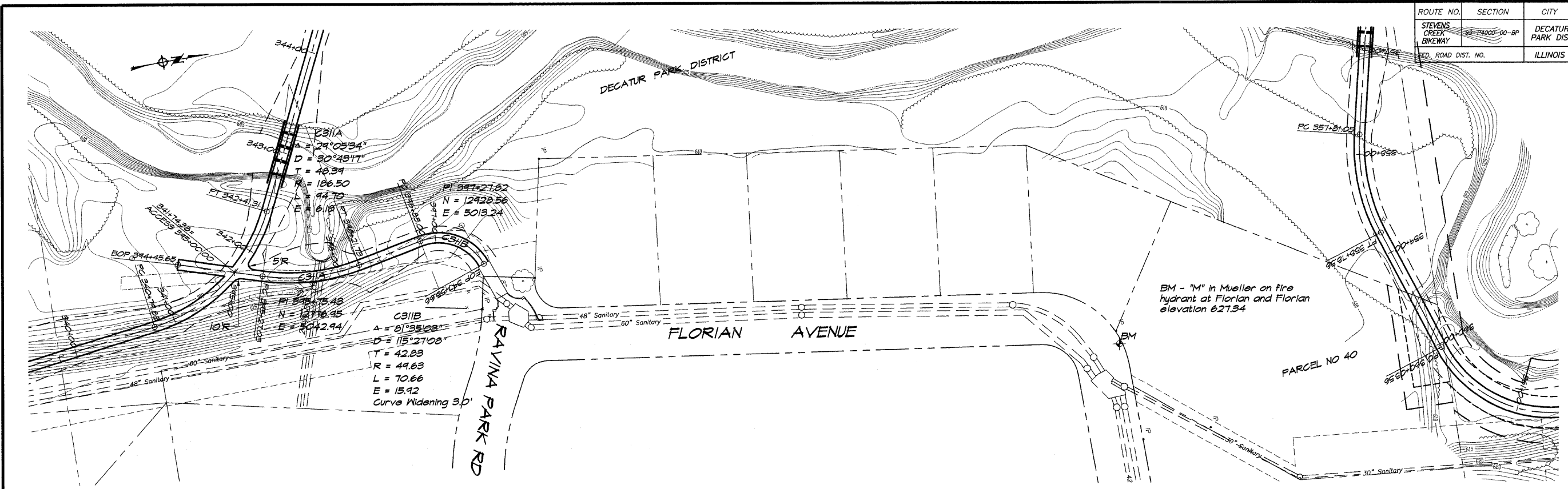
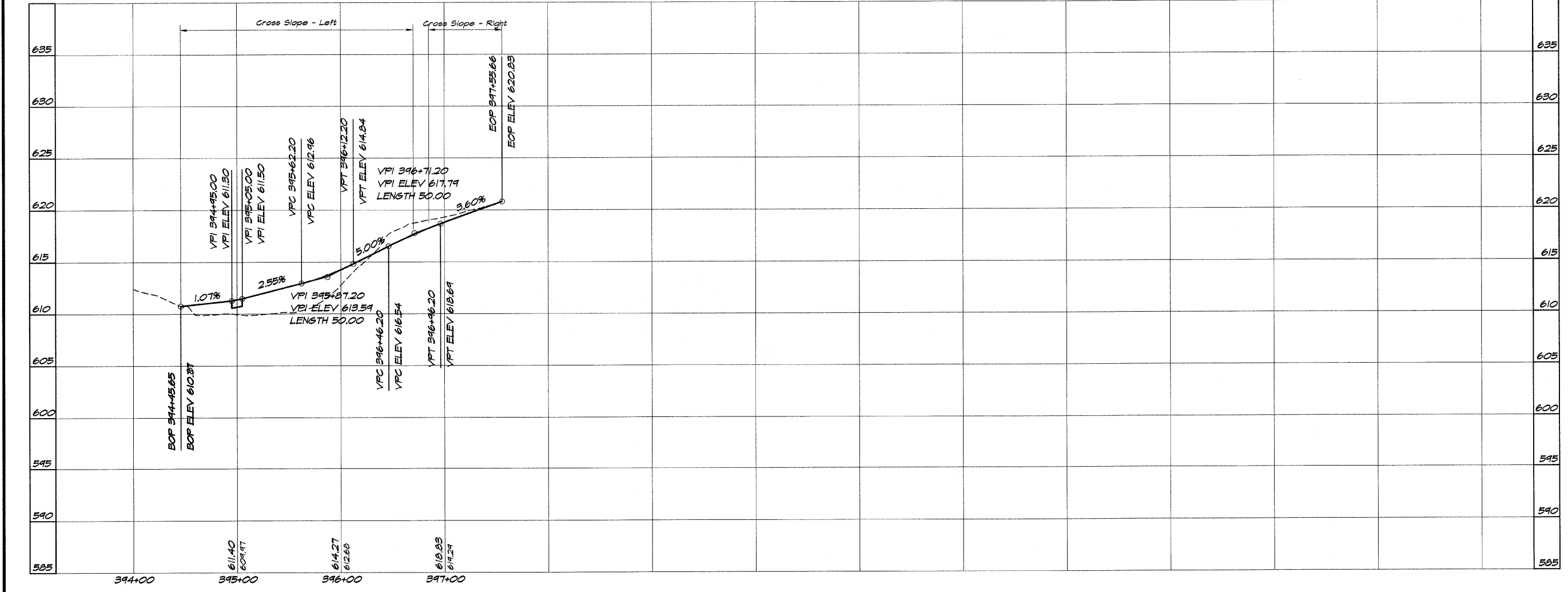


ROUTE NO.	SECTION	CITY	TOTAL SHEETS	SHEET NO.
STEVENS CREEK BIKEWAY	92-24000-00-BP	DECATUR PARK DIST	145	19
FED. ROAD DIST. NO.		ILLINOIS	PROJECT TE-0007(27)	



BAINBRIDGE & ASSOCIATES, INC.
G&B MILAWSKI
 Consulting Engineers
 100 SOUTH TAYLORVILLE ROAD
 DECATUR, ILLINOIS
 (Phone: 248-1500)

DESIGNED	SCALE	DATE	NO.	BY	DATE
DLW	1" = 50'	May 2002			
DRWN					
P. MILLIS					
FIELD BOOK					
XXX					



DECATUR PARK DISTRICT
STEVENS CREEK BIKEWAY - PHASE I
PLAN AND PROFILE
 STATION 394+45.65 TO 397+55.66