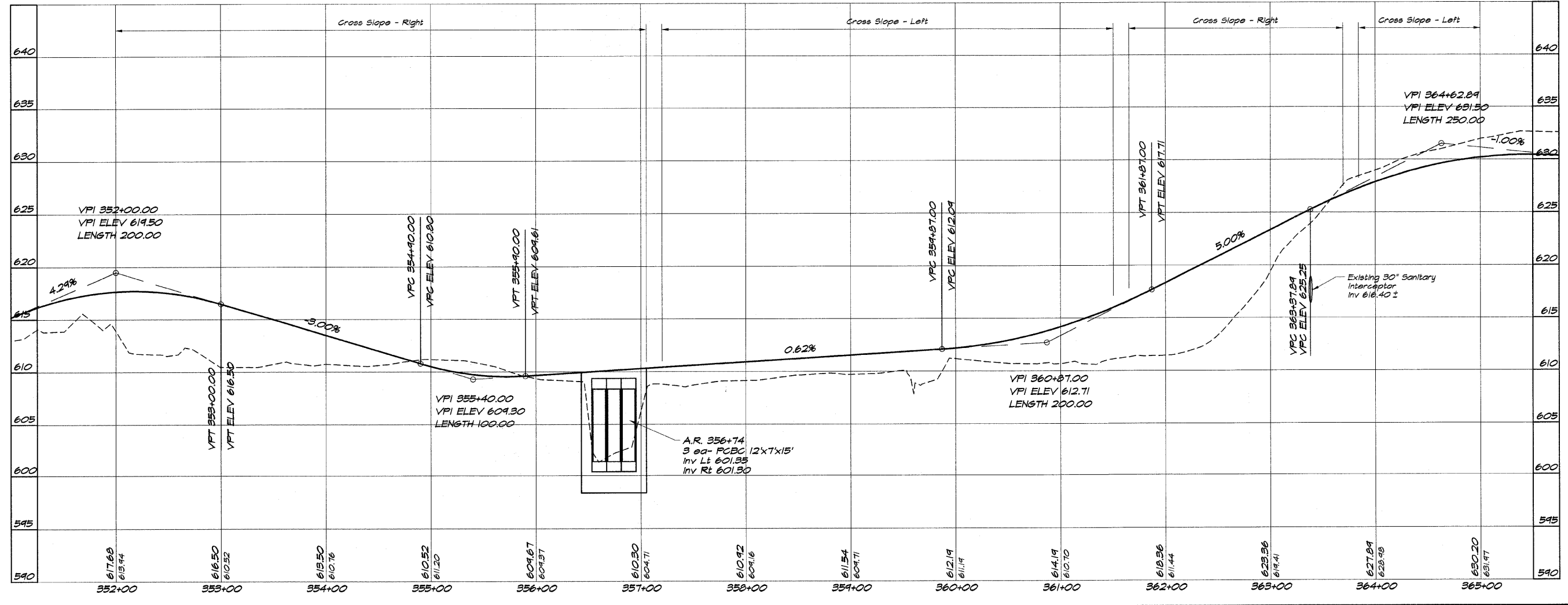
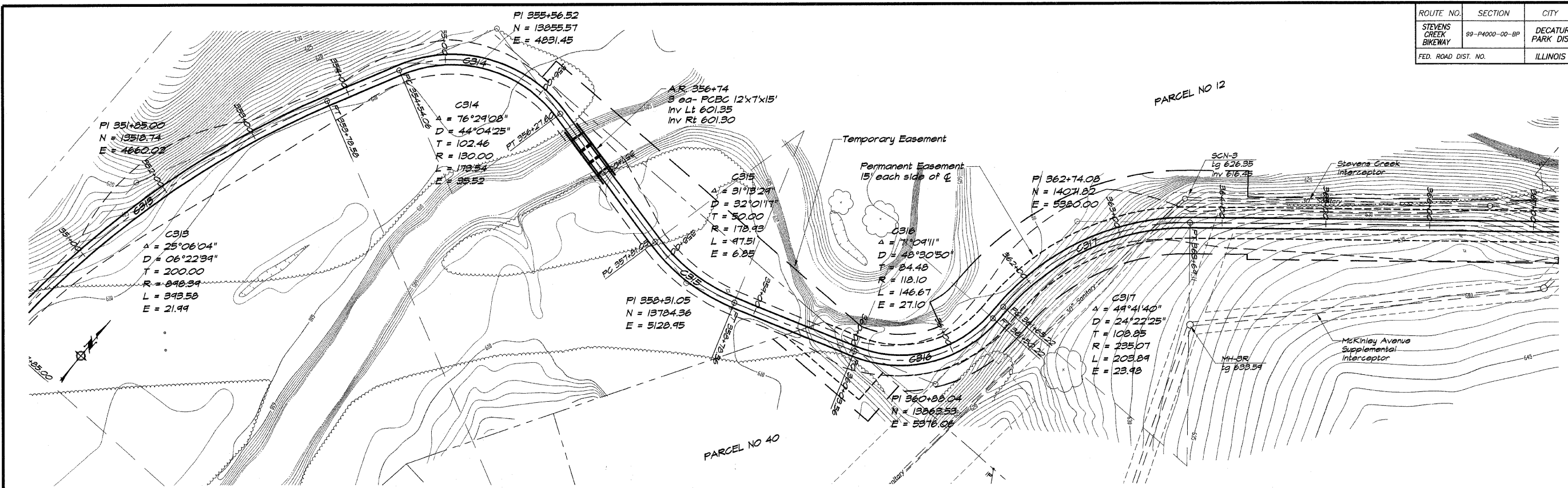


ROUTE NO.	SECTION	CITY	TOTAL SHEETS	SHEET NO.
STEVENS CREEK BIKEWAY	99-P4000-00-BP	DECATUR PARK DIST	145	20
FED. ROAD DIST. NO.		ILLINOIS	PROJECT	TE-0007(27)



BAINBRIDGE & ASSOCIATES, INC.  
 Consulting Engineers  
 180 SOUTH TAYLORVILLE ROAD  
 DECATUR, ILLINOIS 62521  
 License 154-001028

REVISIONS	NO.	BY	DATE

SCALE: 1" = 50'  
 DATE: May 2002  
 DRAWN: P mills  
 FIELD BOOK: 508 NO. 41044  
 XXX

**DECATUR PARK DISTRICT**  
**STEVENS CREEK BIKEWAY - PHASE I**  
**PLAN AND PROFILE**  
 STATION 352+00.00 TO 365+00.00