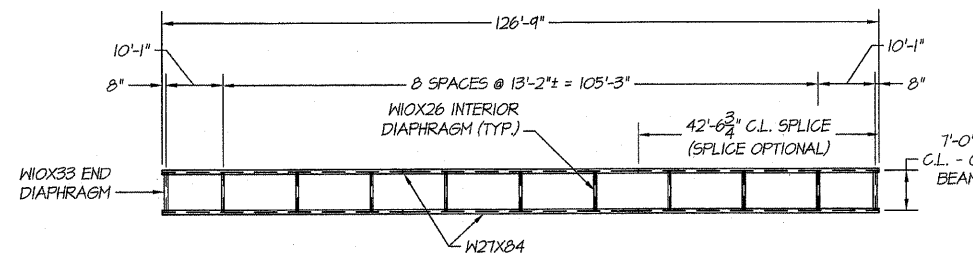
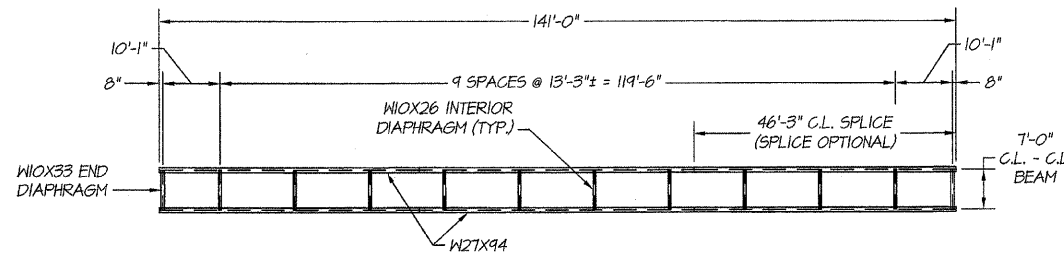


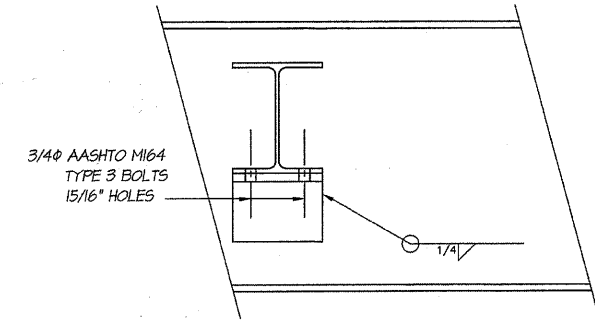
ROUTE NO.	SECTION	CITY	TOTAL SHEETS	SHEET NO.
STEVENS CREEK BIKEWAY	99-P4000-00-BP	DECATUR PARK DIST	145	32
FED. ROAD DIST. NO.		ILLINOIS	PROJECT TE-0007(27)	



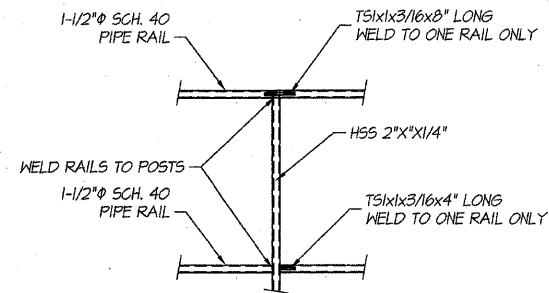
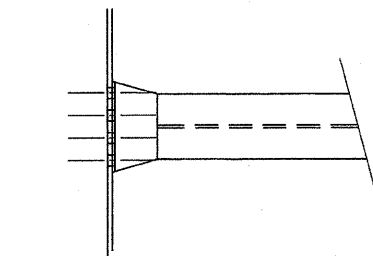
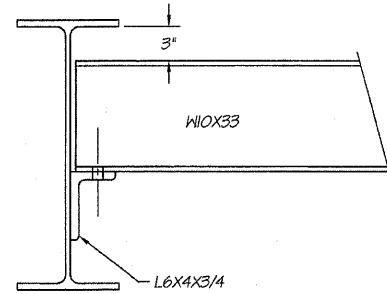
STRUCTURAL STEEL PLAN  
CENTER STREET BRIDGE  
FABRICATED BRIDGE NO. 1  
STA. 257+75 TO 259+00  
SCALE: 1/16" = 1'



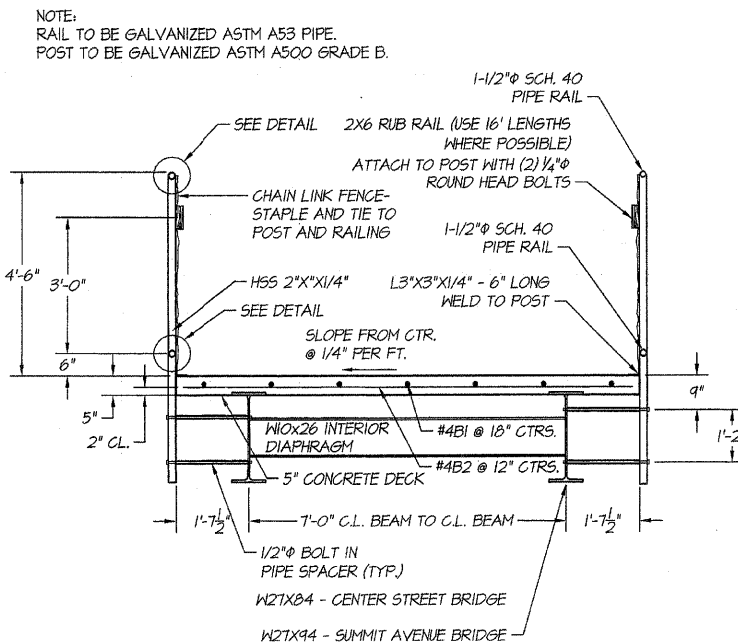
STRUCTURAL STEEL PLAN  
SUMMIT AVENUE BRIDGE  
FABRICATED BRIDGE NO. 2  
STA. 375+63 TO 377+03  
SCALE: 1/16" = 1'



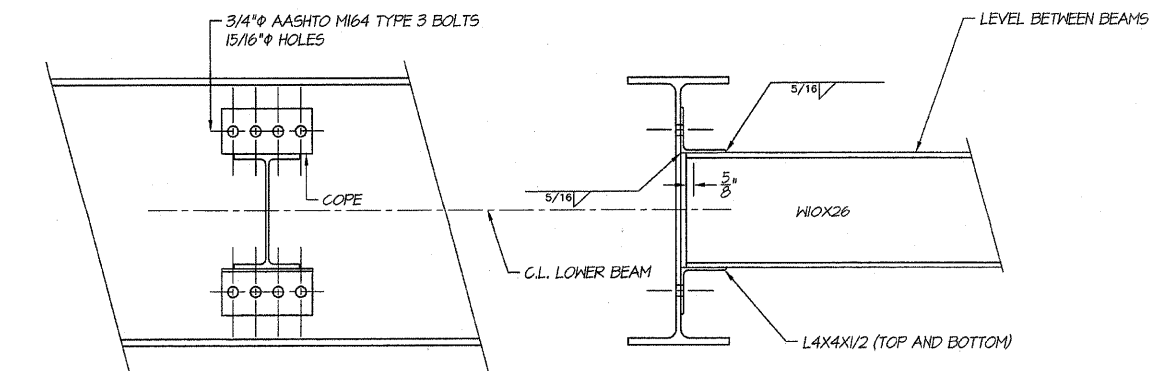
END DIAPHRAGM  
SCALE: 1-1/2" = 1'



JOINT DETAIL  
SCALE: 1/2" = 1'



TYPICAL DECK SECTION  
SCALE: 1/2" = 1'



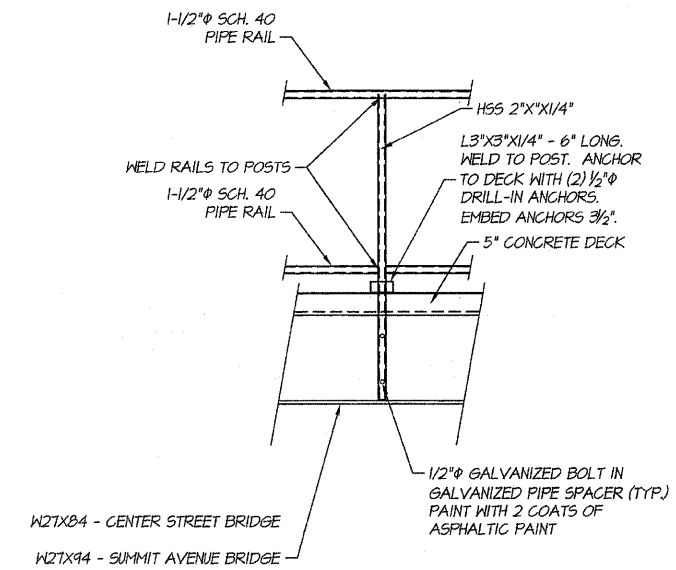
INTERIOR DIAPHRAGM  
SCALE: 1-1/2" = 1'

**BILL OF MATERIALS**  
FABRICATED BRIDGE NO. 1

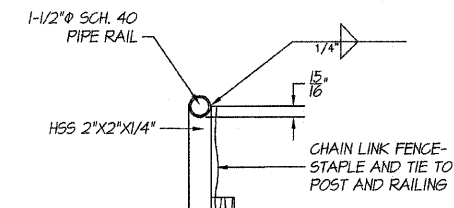
BAR SIZE	NUMBER	LENGTH	SHAPE	WEIGHT
#4B1	37	27'-0"		667
#4B2	132	10'-0"		882
TOTAL WEIGHT OF REINFORCEMENT = 1549 LBS.				
CONCRETE QUANTITY = 20.6 CU. YDS.				

**BILL OF MATERIALS**  
FABRICATED BRIDGE NO. 2

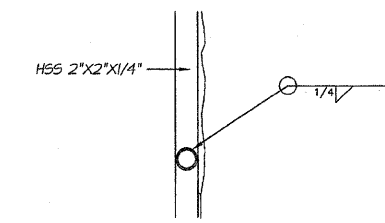
BAR SIZE	NUMBER	LENGTH	SHAPE	WEIGHT
#4B1	43	27'-0"		776
#4B2	147	10'-0"		982
TOTAL WEIGHT OF REINFORCEMENT = 1758 LBS.				
CONCRETE QUANTITY = 22.5 CU. YDS.				



HAND RAILING DETAIL  
SCALE: 1/2" = 1'



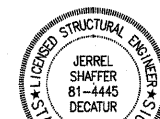
PIPE WELD DETAIL - TOP  
SCALE: 1-1/2" = 1'



PIPE WELD DETAIL - BOTTOM  
SCALE: 1-1/2" = 1'

I certify that to the best of my knowledge, information and belief, this bridge design is structurally adequate for the design loading shown on the plans. The design is an economical one for the style of structure and complies with requirements for the current "AASHTO Standard Specifications for Highway Bridges."

*Jerrel L. Shaffer*  
JERREL L. SHAFFER  
ILLINOIS STRUCTURAL ENGINEER NO. 81-4445



LICENSE EXPIRES: 11/30/2010

BAINBRIDGE & ASSOCIATES, INC.  
Consulting Engineers  
1870 SOUTH TAYLORVILLE ROAD  
DECATUR, ILLINOIS 62526  
Phone: 217-285-1400

REVISIONS

NO.	BY	DATE
1	AS	APR 11 2004
2	RJZ	APR 11 2004
3	XXX	

DECATUR PARK DISTRICT  
STEVENS CREEK BIKEWAY - PHASE I  
FABRICATED BRIDGE DESIGN  
DETAILS

ENGINEERS, INC.  
CONSULTING ENGINEERS  
2800 N. WARRIOR LANE, SUITE 200  
DECATUR, ILLINOIS 62526  
PHONE: 217-285-1400  
FAX: 217-285-1401  
PROFESSIONAL DESIGN FIRM #18-001181

SHEET NO.  
**32**  
OF  
**145**