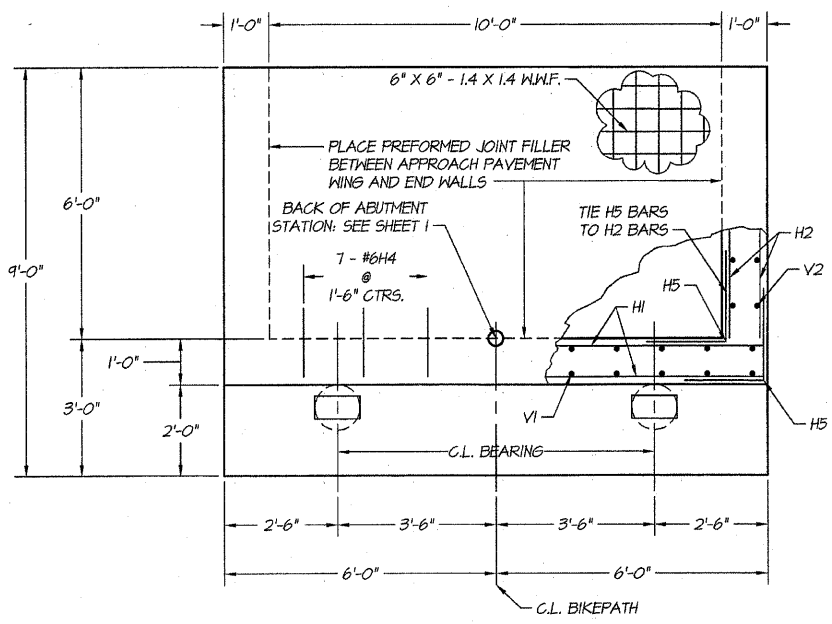
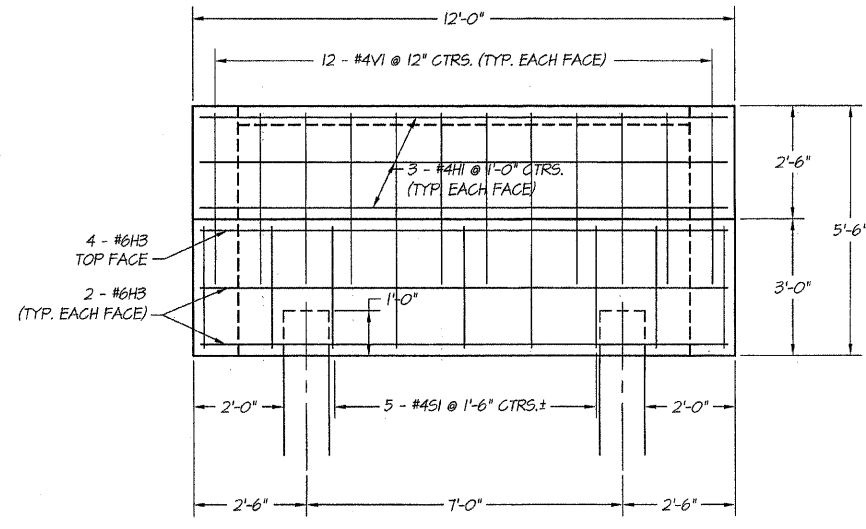


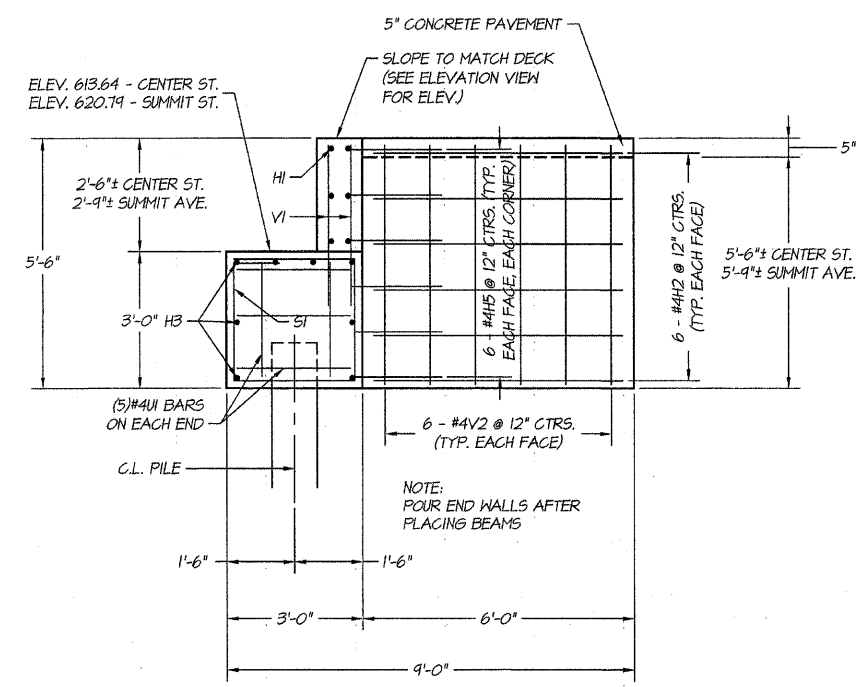
ROUTE NO.	SECTION	CITY	TOTAL SHEETS	SHEET NO.
STEVENS CREEK BIKEWAY	99-P4000-00-BP	DECATUR PARK DIST	145	33
FED. ROAD DIST. NO.	ILLINOIS		PROJECT TE-0007(27)	



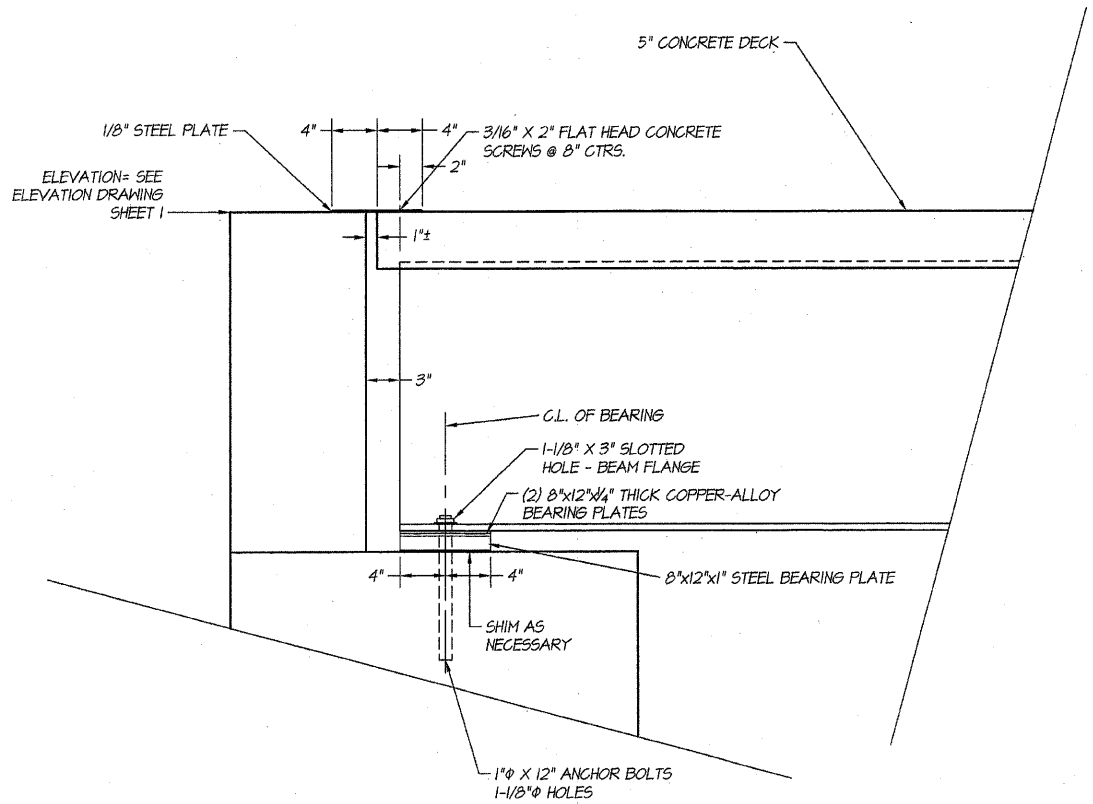
PLAN VIEW - ABUTMENT
SCALE: 1/2" = 1'



ELEVATION - ABUTMENT
SCALE: 1/2" = 1'

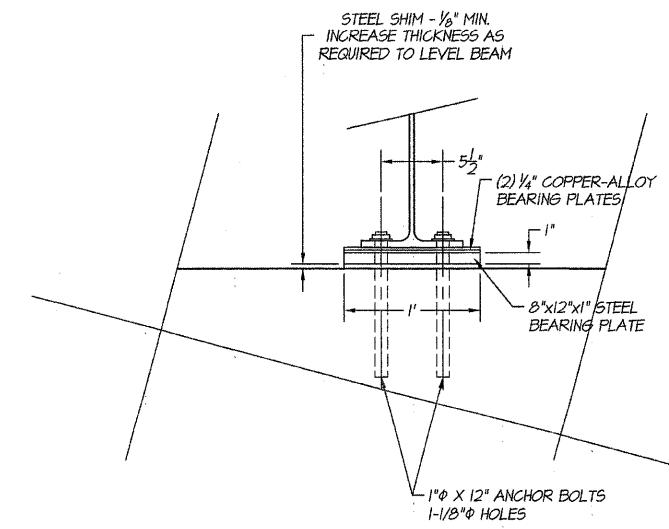
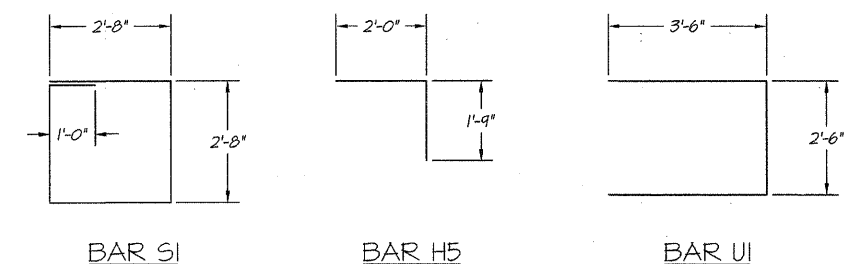


SECTION - ABUTMENT
SCALE: 1/2" = 1'



ELEVATION - BEARING DETAIL
SCALE: 1-1/2" = 1'

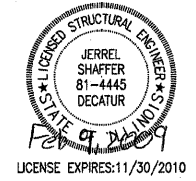
BILL OF MATERIALS (1 ABUTMENT)				
BAR SIZE	NUMBER	LENGTH	SHAPE	WEIGHT
#4H1	6	11'-9"		47
#4H2	24	5'-6"		88
#6H3	8	11'-9"		141
#6H4	7	1'-6"		16
#4H5	24	3'-9"	SEE DETAIL	60
#4S1	11	11'-8"	SEE DETAIL	86
#4U1	10	9'-6"	SEE DETAIL	63
#4V1	24	3'-6"		56
#4V2	24	5'-3"		84
TOTAL WEIGHT OF REINFORCEMENT = 641 LBS.				
CONCRETE QUANTITY = 8.7 CU. YDS				
CENTER ST. - 12" CONCRETE PILES = 70 LIN. FT.				
SUMMIT AVE. - 12" CONCRETE PILES = 71 LIN. FT.				



SECTION - BEARING DETAIL
SCALE: 1-1/2" = 1'

I certify that to the best of my knowledge, information and belief, this bridge design is structurally adequate for the design loading shown on the plans. The design is an economical one for the style of structure and complies with requirements for the current "AASHTO Standard Specifications for Highway Bridges."

Jerrel L. Shaffer
JERREL L. SHAFFER
ILLINOIS STRUCTURAL ENGINEER NO. 81-4445



BARNHARDT & ASSOCIATES, INC.
Consulting Engineers
MILWAUKEE
1870 SOUTH TAYLORVILLE ROAD
DECATUR, ILLINOIS
Illinois License 184-07285

DESIGNED	SCALE	NO.	BY	DATE
JLS	As Noted			
DRAWN	DATE	JOB NO.	FIELD BOOK	XXX
RJZ	April 2004	97099		

DECATUR PARK DISTRICT
STEVENS CREEK BIKEWAY - PHASE I
FABRICATED BRIDGE DESIGN
DETAILS

ENGINEERS, INC.
CONSULTING ENGINEERS
PROFESSIONAL DESIGN TEAM #184-07285
ILLINOIS LICENSE #184-07285
EXPIRES 04/30/2005

SHEET NO.
33
OF
145