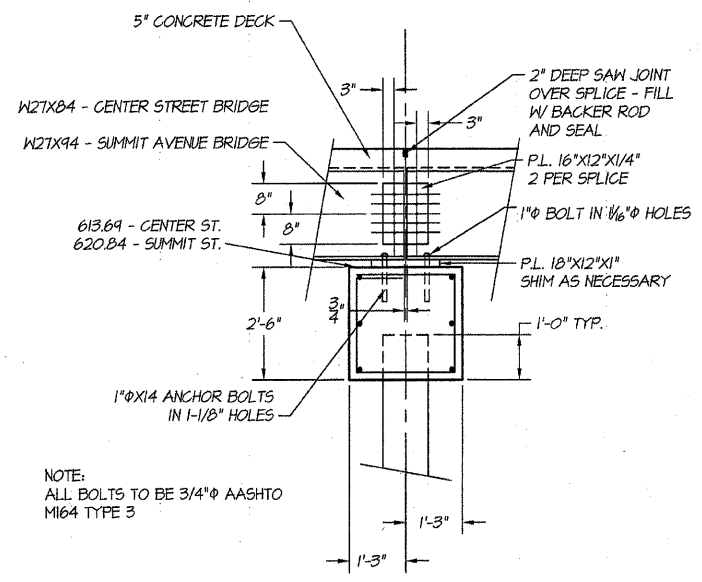
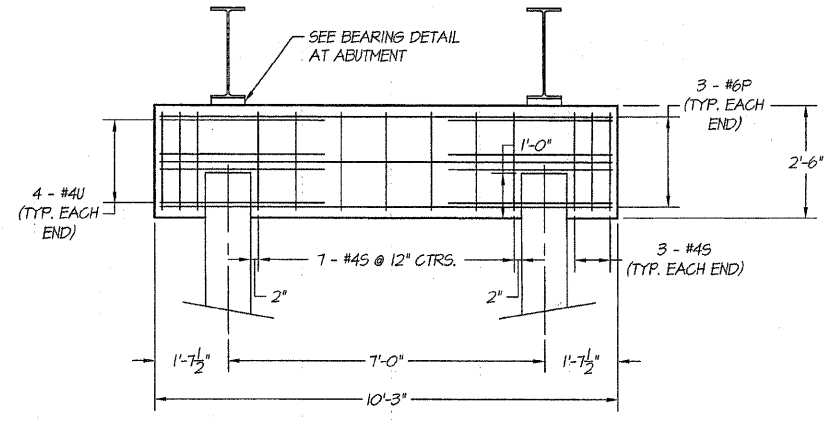


ROUTE NO.	SECTION	CITY	TOTAL SHEETS	SHEET NO.
STEVENS CREEK BIKEWAY	99-P4000-00-BP	DECATUR PARK DIST	145	34
FED. ROAD DIST. NO.		ILLINOIS	PROJECT	TE-0007(27)

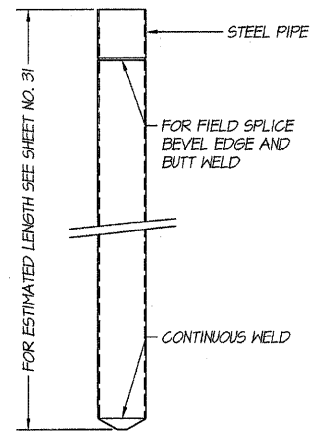
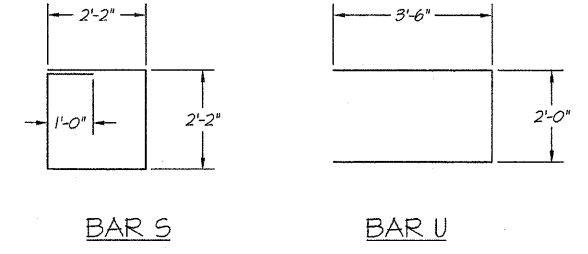


PIER ELEVATION  
SCALE: 1/2" = 1'



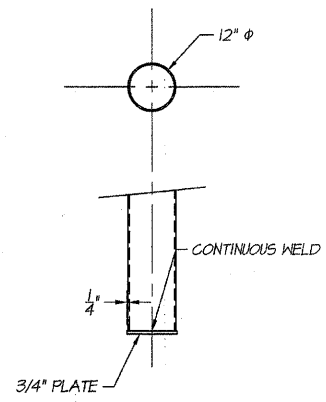
PIER SECTION  
SCALE: 1/2" = 1'

BILL OF MATERIALS (1 PIER)				
BAR SIZE	NUMBER	LENGTH	SHAPE	WEIGHT
#6P	6	10'-0"		90
#4U	8	9'-0"	SEE DETAIL	49
#4S	13	9'-8"	SEE DETAIL	84
TOTAL WEIGHT OF REINFORCEMENT = 223 LBS.				
CONCRETE QUANTITY = 2.4 CU. YDS.				
CENTER ST. - 12" CONCRETE PILES = 70 LIN. FT.				
SUMMIT AVE. - 12" CONCRETE PILES = 71 LIN. FT.				

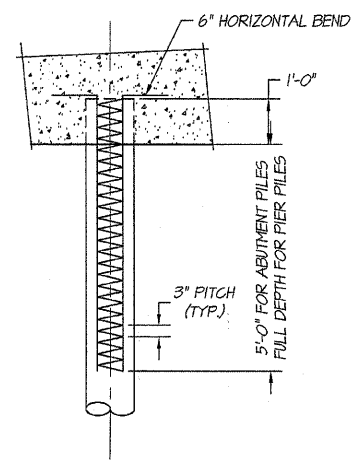


ELEVATION  
DETAIL OF CYLINDRICAL STEEL SHELL FOR CAST IN PLACE CONCRETE PILES  
SCALE: 1/2" = 1'

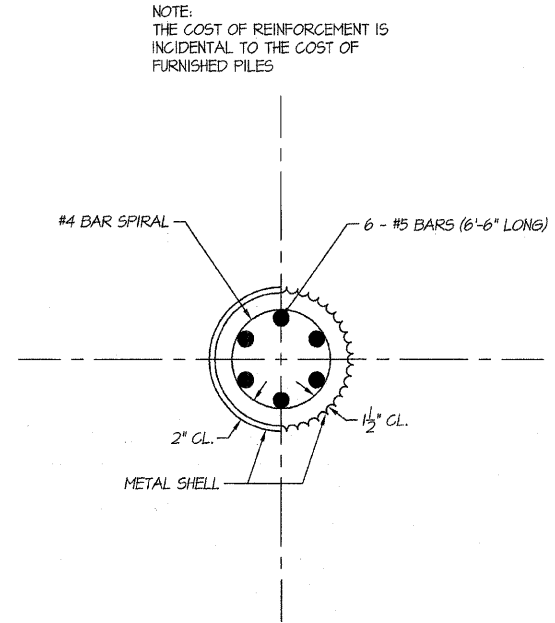
NOTE:  
DRIVING AND BEARING ENDS OF PIPE SHALL BE CUT SQUARE.  
THE THICKNESS OF THE SHELL SHALL BE 0.1743 INCHES WITH A TOLERANCE OF 5%.



ELEVATION - OPTIONAL FLAT END  
DETAIL OF CYLINDRICAL STEEL SHELL FOR CAST IN PLACE CONCRETE PILES  
SCALE: 1/2" = 1'



ELEVATION  
DETAIL OF REINFORCEMENT FOR METAL SHELLS  
SCALE: 1/2" = 1'



SECTION  
DETAIL OF REINFORCEMENT FOR METAL SHELLS  
SCALE: 1-1/2" = 1'

NOTE:  
REINFORCEMENT IN TOP OF PILE SHALL BE OMITTED UNDER PIER FOOTINGS WHEN PLACED IN NATURAL GROUND.

NOTE:  
METAL SHELL PILES USED AT PIERS SHALL RECEIVE ONE COAT OF PRIMER AND TWO COATS OF ALUMINUM PAINT IN ACCORDANCE WITH SECTION 506 OF THE STANDARD SPECIFICATIONS AFTER THE PIER FORMS HAVE BEEN REMOVED. THE PAINT SHALL EXTEND FROM THE BOTTOM OF THE CONCRETE CAP TO THE STREAMBED. PAINTING THE METAL SHELLS IS INCIDENTAL TO THE COST OF FURNISHING THE PILES.

I certify that to the best of my knowledge, information and belief, this bridge design is structurally adequate for the design loading shown on the plans. The design is an economical one for the style of structure and complies with requirements for the current "AASHTO Standard Specifications for Highway Bridges."

*Jerrel Shaffer*  
JERREL L. SHAFFER  
ILLINOIS STRUCTURAL ENGINEER NO. 01-4445



BATNERIDGE & ASSOCIATES, INC.  
Consulting Engineers  
GIBB MILARSKI  
190 SOUTH TAYLORVILLE ROAD  
DECATUR, ILLINOIS 62521  
Phone: 248-1111  
Fax: 248-1111

DESIGNED	SCALE	NO.	BY	DATE
JLS	As Noted			
RJZ	As Noted			
	As Noted			
	As Noted			
	As Noted			
	As Noted			

DECATUR PARK DISTRICT  
STEVENS CREEK BIKEWAY - PHASE I  
FABRICATED BRIDGE DESIGN  
DETAILS

ENGINEERS, INC.  
2020 N. WANDA LINDER HWY. J. HWY.  
CONSULTING ENGINEERS  
DECATUR, ILLINOIS 62521  
PHONE: 248-1111  
FAX: 248-1111

SHEET NO.  
**34**  
OF  
**145**