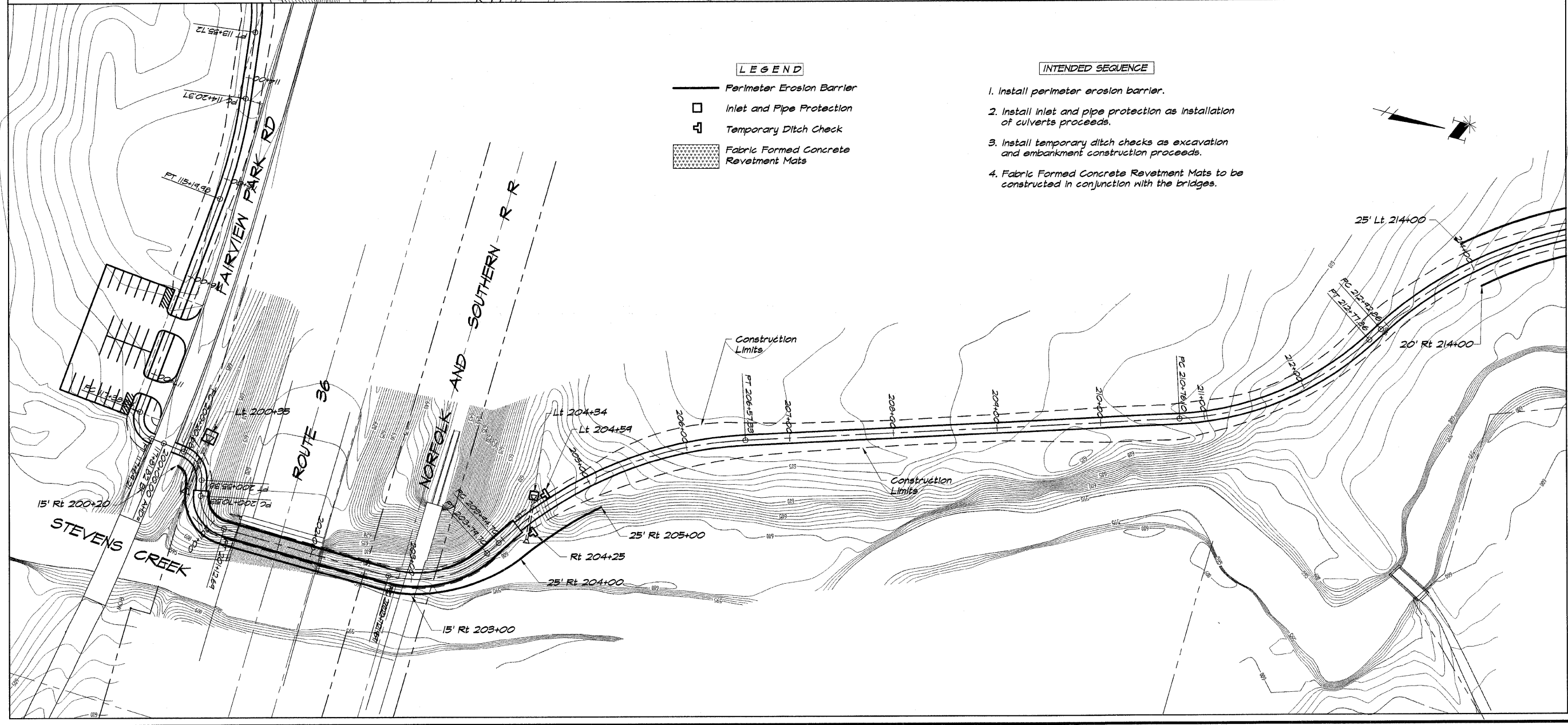
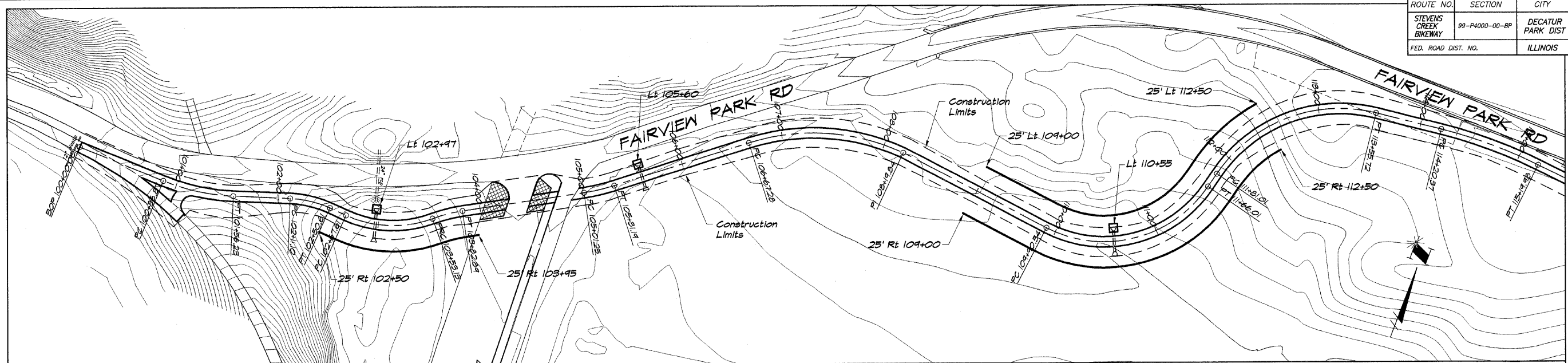


ROUTE NO.	SECTION	CITY	TOTAL SHEETS	SHEET NO.
STEVENS CREEK BIKEWAY	99-P4000-00-BP	DECATUR PARK DIST	145	39
FED. ROAD DIST. NO.	ILLINOIS		PROJECT TE-0007(27)	



**LEGEND**

	Perimeter Erosion Barrier
	Inlet and Pipe Protection
	Temporary Ditch Check
	Fabric Formed Concrete Revetment Mats

- INTENDED SEQUENCE**
1. Install perimeter erosion barrier.
  2. Install inlet and pipe protection as installation of culverts proceeds.
  3. Install temporary ditch checks as excavation and embankment construction proceeds.
  4. Fabric Formed Concrete Revetment Mats to be constructed in conjunction with the bridges.

**BAINBRIDGE & ASSOCIATES, INC.**  
 Consulting Engineers  
 1111 W. TAYLOR ROAD  
 DECATUR, ILLINOIS  
 License 184-01285

**REVISIONS**

NO.	BY	DATE

SCALE: 1" = 50'  
 DATE: May 2002  
 DESIGNED: MHP  
 DRAWN: P. Mills  
 FIELD BOOK: XXXX  
 JOB NO.: 990094

**DECATUR PARK DISTRICT**  
 STEVENS CREEK BIKEWAY - PHASE I  
 EROSION CONTROL PLAN