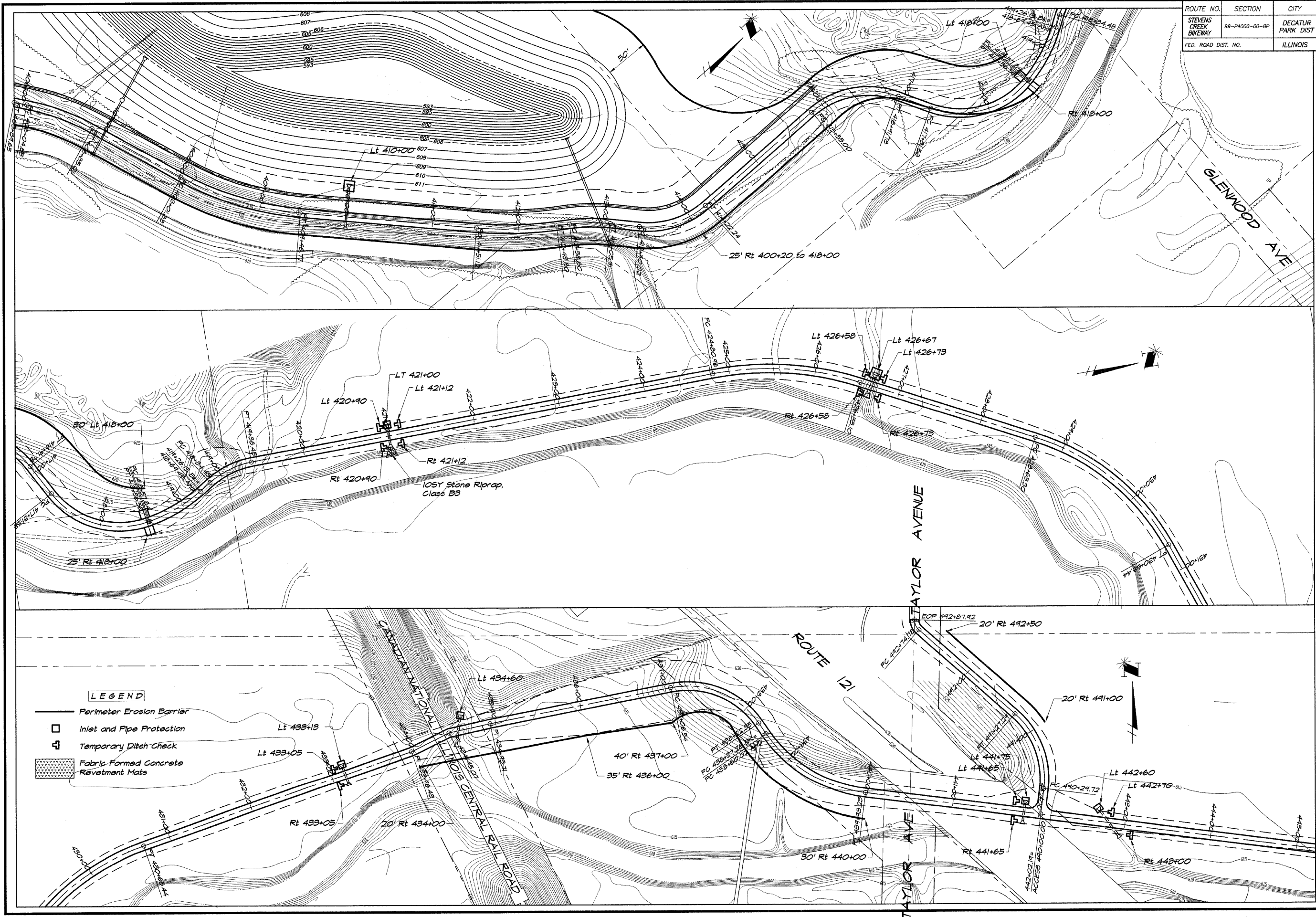


ROUTE NO.	SECTION	CITY	TOTAL SHEETS	SHEET NO.
STEVENS CREEK BIKEWAY	99-P4000-00-BP	DECATUR PARK DIST	145	44
FED. ROAD DIST. NO.	ILLINOIS		PROJECT TE-0007(27)	



BAINBRIDGE & ASSOCIATES, INC.
GEE MILANSKI
 Consulting Engineers
 1000 N. TAYLOR AVENUE
 DECATUR, ILLINOIS
 61742-1000
 Phone: 312/401-1200

REVISIONS	NO.	BY	DATE

DESIGNED	MAP	SCALE	1" = 50'
DRAWN	P. mills	DATE	May 2002
FIELD BOOK	XXX	JOB NO.	99C099

DECATUR PARK DISTRICT
STEVENS CREEK BIKEWAY - PHASE I
EROSION CONTROL PLAN

P:\145493\145493.dwg
 5/1/02 10:55 AM
 5/1/02 10:55 AM