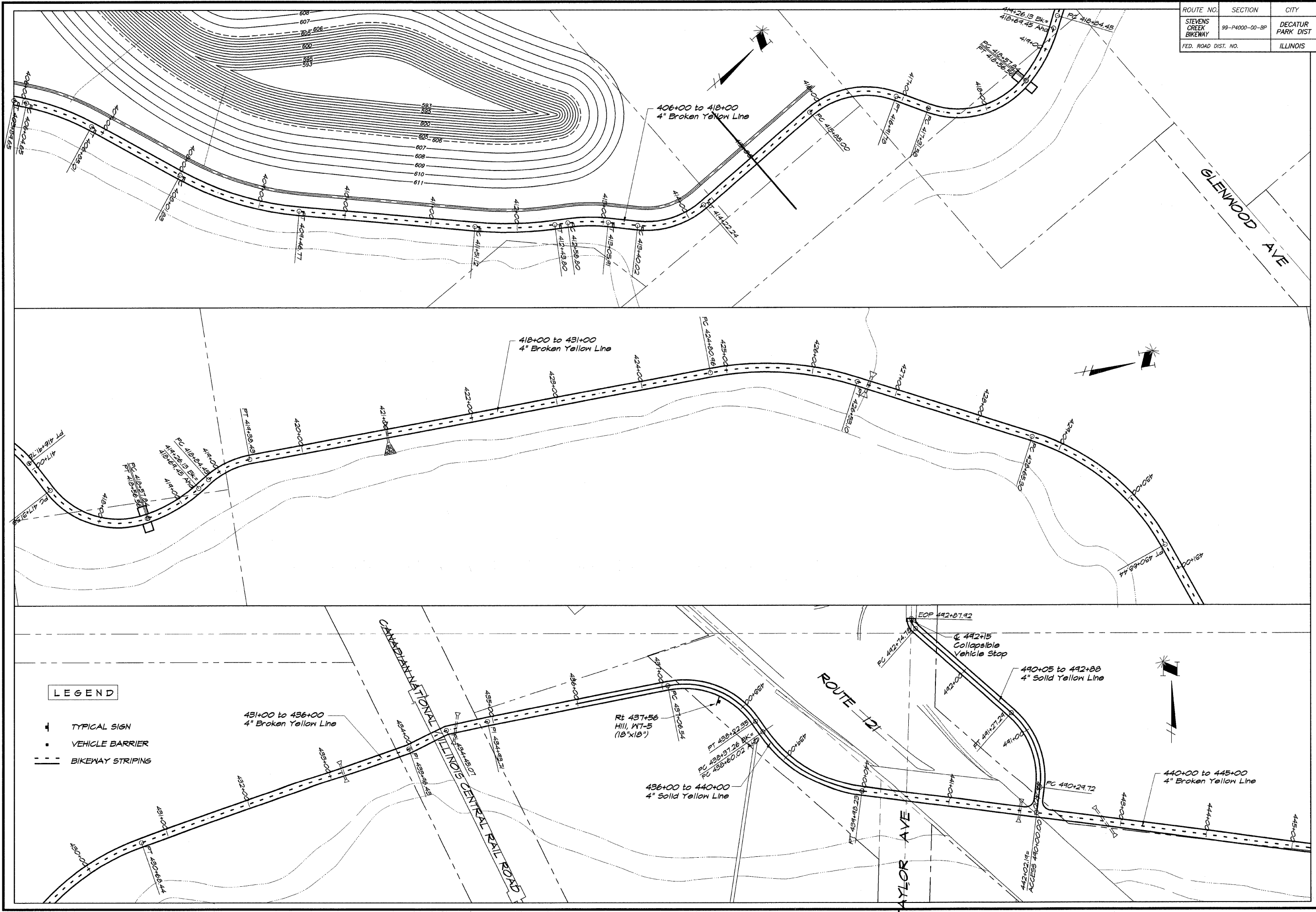


ROUTE NO.	SECTION	CITY	TOTAL SHEETS	SHEET NO.
STEVENS CREEK BIKEWAY	99-P4000-00-BP	DECATUR PARK DIST	145	51
FED. ROAD DIST. NO.	ILLINOIS		PROJECT TE-0007(27)	

BAINBRIDGE GEE MILLAWSKI
 Consulting Engineers
 1870 SOUTH TAYLOR ROAD
 DECATUR ILLINOIS 62521
 Phone: 217-402-7565

DESIGNED	DRAWN	FIELD BOOK	SCALE	DATE	DATE	DATE	DATE
MHP	P	XXX	1" = 50'	May 2002	May 2002	May 2002	May 2002

DECATUR PARK DISTRICT
 STEVENS CREEK BIKEWAY - PHASE I
 PAVEMENT MARKING AND SIGNING PLAN



LEGEND

- ▲ TYPICAL SIGN
- VEHICLE BARRIER
- BIKEWAY STRIPING

431+00 to 436+00
 4" Broken Yellow Line

Rt 437+56
 Hill, W7-5
 (18'x18")

436+00 to 440+00
 4" Solid Yellow Line

490+05 to 492+88
 4" Solid Yellow Line

440+00 to 445+00
 4" Broken Yellow Line

P:\VAD\95493\Drawings\Plan\StevensCreek\StevensCreek_Plan.dwg