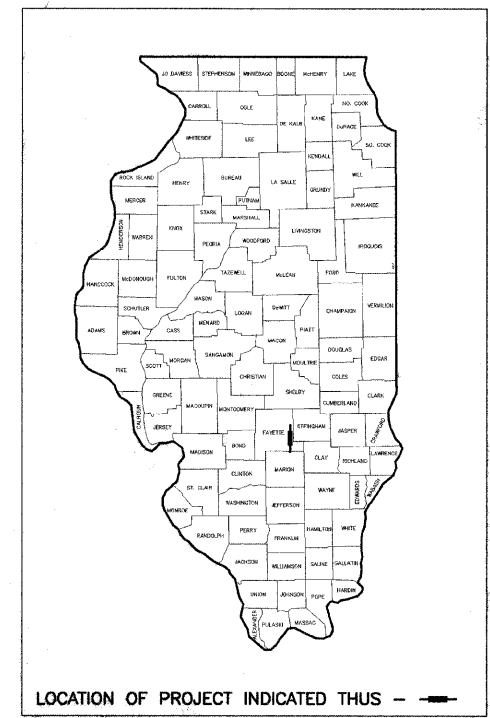
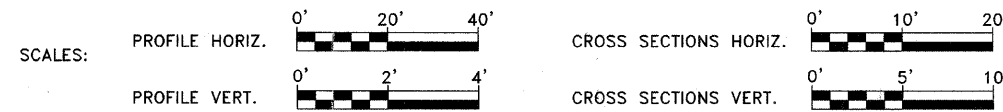


STATE OF ILLINOIS DEPARTMENT OF TRANSPORTATION DIVISION OF HIGHWAYS PLANS FOR PROPOSED HIGHWAY BRIDGE PROGRAM

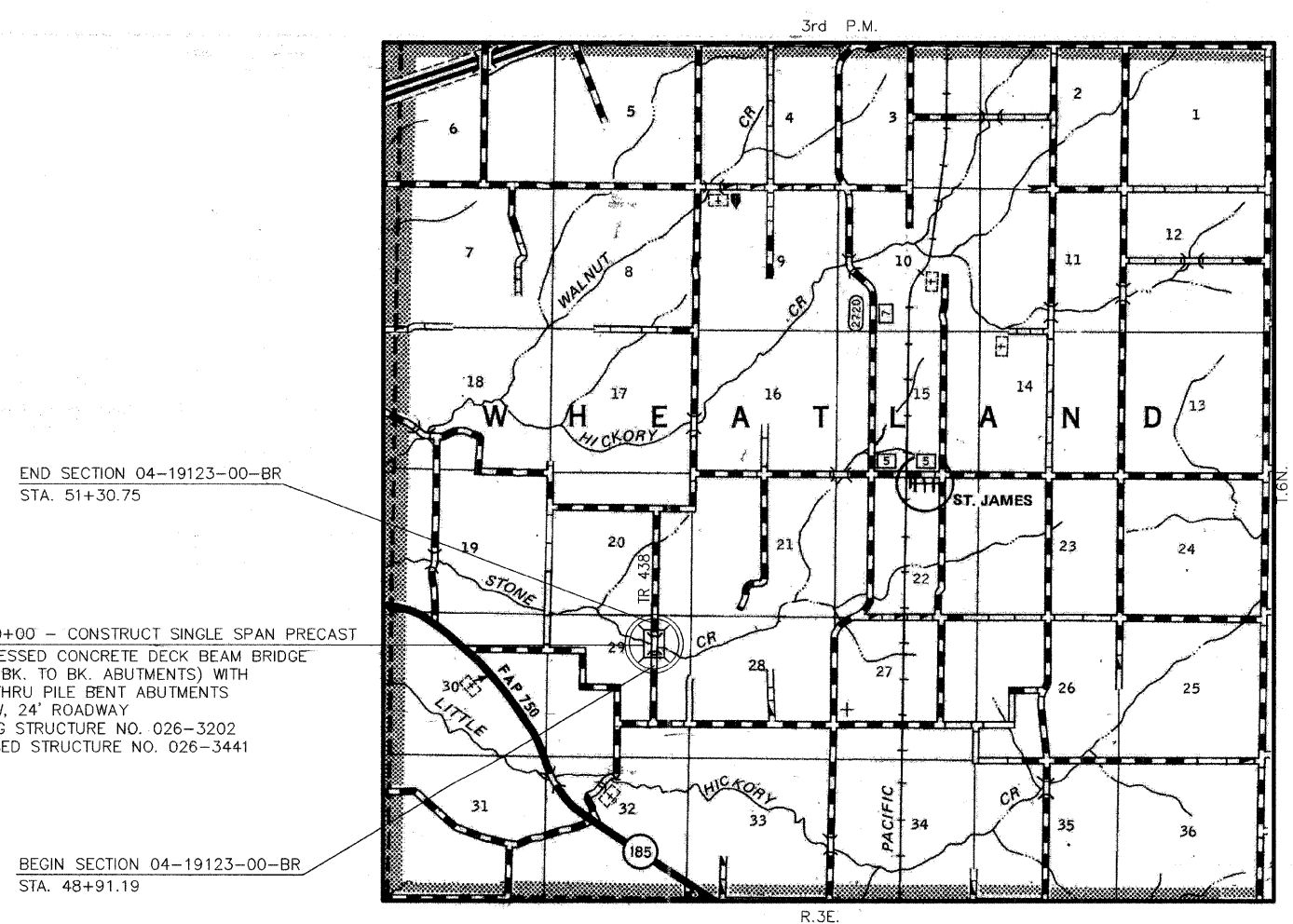
ROUTE NO.	SECTION	COUNTY	TOTAL SHEETS	SHEET NO.
TR 438	04-19123-00-BR	FAYETTE	13	1
FED. ROAD DIST. NO.	ILLINOIS	PROJECT	CONTRACT NO. 95567	



INDEX OF SHEETS	
1	COVER SHEET
2	TYPICAL CROSS SECTIONS, GENERAL NOTES, AND SUMMARY OF QUANTITIES
3	PLAN AND PROFILE
4-12	BRIDGE PLANS
13	CROSS SECTIONS
STANDARD 000001-05	STANDARD SYMBOLS, ABBREVIATIONS AND PATTERNS
STANDARD 280001-04	TEMPORARY EROSION CONTROL SYSTEMS
STANDARD 701901-01	TRAFFIC CONTROL DEVICES
STANDARD B.L.R. 21-8	TYPICAL APPLICATION OF TRAFFIC CONTROL DEVICES FOR CONSTRUCTION ON RURAL LOCAL HIGHWAYS



SECTION 04-19123-00-BR PROJECT NO. BROS-051(085) WHEATLAND ROAD DISTRICT FAYETTE COUNTY JOB NO. C-97-048-09



END SECTION 04-19123-00-BR
STA. 51+30.75

STA. 50+00 - CONSTRUCT SINGLE SPAN PRECAST
PRESTRESSED CONCRETE DECK BEAM BRIDGE
(61.50' BK. TO BK. ABUTMENTS) WITH
SPILL-THRU PILE BENT ABUTMENTS
0° SKEW, 24' ROADWAY
EXISTING STRUCTURE NO. 026-3202
PROPOSED STRUCTURE NO. 026-3441

BEGIN SECTION 04-19123-00-BR
STA. 48+91.19

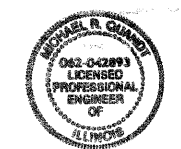
LOCATION MAP
APPROXIMATE SCALE - 1" = 0.60 MILE
LENGTH OF IMPROVEMENTS - 239.56 FEET = 0.045 MILE

APPROVED 12-17, 2008.
Michael A. Neff
COUNTY ENGINEER

PASSED 1-06, 2008.
Marvyn Koval
DISTRICT SEVEN ENGINEER OF
LOCAL ROADS & STREETS

Releasing For
Bid Based on
Limited Review 1-06, 2008.
Roger L. Bushnell
DEPUTY DIRECTOR OF HIGHWAYS,
REGION FOUR ENGINEER

STATE OF ILLINOIS
DEPARTMENT OF TRANSPORTATION



MICHAEL R. QUANDT, P.E.
SIGN: *Michael R. Quandt*
DATE: 12/15/08
EXP. DATE: 11/30/09



48 HOURS PRIOR TO EXCAVATION CALL J.U.L.I.E.:
811 OR 1-800-892-0123

CLASS ROAD: RURAL LOCAL ROAD
A.D.T. = 100
30 M.P.H.

STS AECOM
2524 S. Broadway
Salem, IL 62881
618.548.3500
www.sts-aecom.com
Copyright © 2008, by STS

DATE: DECEMBER 15, 2008
STS JOB NO. 200701116

I:\Projects\200701116\DWG\200701116_Cover.dwg, 12/15/2008 12:01:55 PM

I:\PROJECTS\200701116\DWG\200701116_Cover 1.rvt