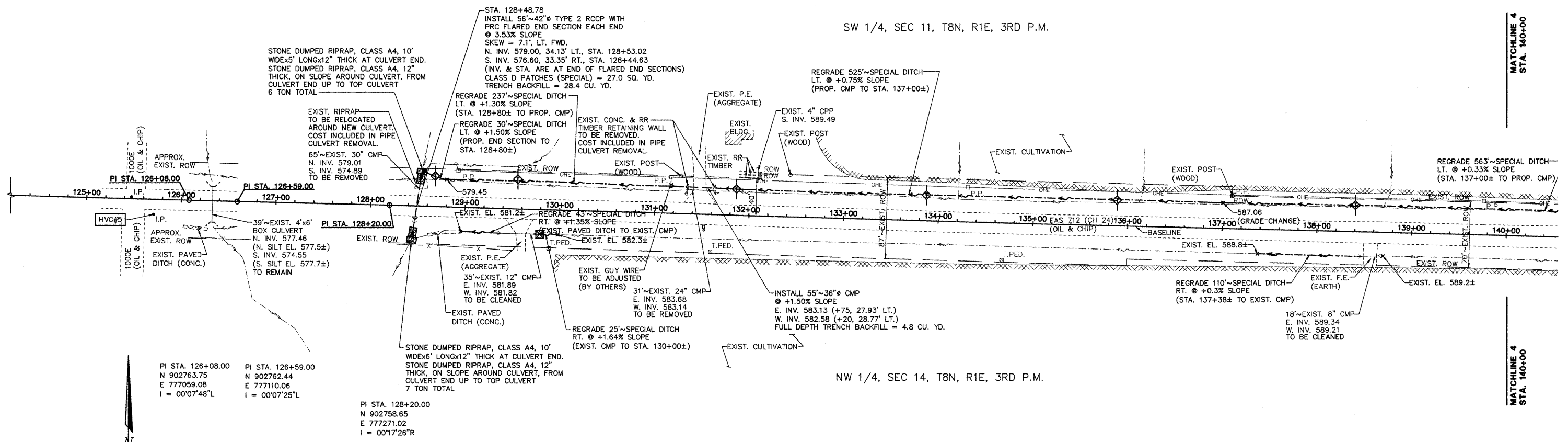


NOTE:
 IN ADDITION TO CONTROL AS SHOWN ON SHEET 2, VERTICAL CONTROL SHALL BE VERIFIED UTILIZING A MINIMUM OF 2 EXISTING CULVERT INVERTS. EXISTING INVERTS ARE TO CULVERT INVERT, NOT SILT ELEVATION. STATIONING PROVIDED FOR REFERENCE ONLY. STATIONING DOES NOT NECESSARILY FOLLOW CENTERLINE ROADWAY.

ROUTE NO.	SECTION	COUNTY	TOTAL SHEETS	SHEET NO.
FAS 712 (CH 24)	05-00110-00-DR	FAYETTE	34	11
FEDERAL AID PROJECT		ILLINOIS	PROJECT	

CONTRACT NO. 95577



PI STA. 126+08.00
 N 902763.75
 E 777059.08
 I = 00°07'48"L

PI STA. 126+59.00
 N 902762.44
 E 777110.06
 I = 00°07'25"L

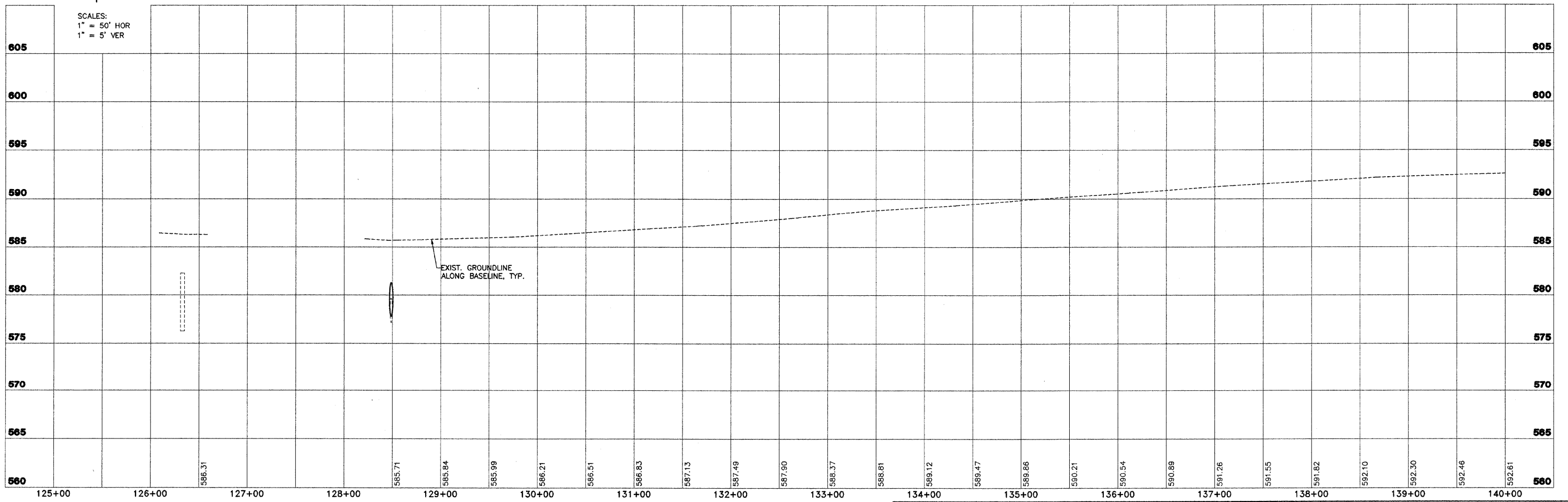
PI STA. 128+20.00
 N 902758.65
 E 777271.02
 I = 00°17'26"R

SW 1/4, SEC 11, T8N, R1E, 3RD P.M.

NW 1/4, SEC 14, T8N, R1E, 3RD P.M.

MATCHLINE 4
 STA. 140+00

MATCHLINE 4
 STA. 140+00



SCALES:
 1" = 50' HOR
 1" = 5' VER

	FAS 712 (CH. 24) SECTION 05-00110-00-DR FAYETTE COUNTY, ILLINOIS		PLAN AND PROFILE STA. 125+00 TO STA.140+00		SURVEY JAS DESIGN MRQ DRAWN BLT	CHECKED APPROVED	DATE 03/25/09 REVISED JOB NO. 200901393
	<small>2524 South Broadway Salem, Illinois 62801 618.548.3500 www.aecom.com Copyright 2008 By AECOM IL Design Firm Reg. No. 184003708</small>						