

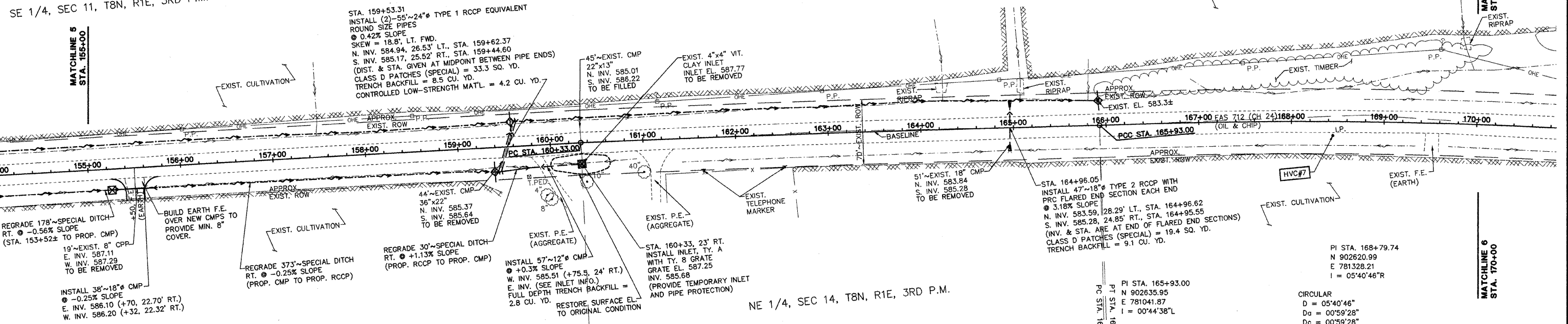
NOTE:
 IN ADDITION TO CONTROL AS SHOWN ON SHEET 2, VERTICAL CONTROL SHALL BE VERIFIED UTILIZING A MINIMUM OF 2 EXISTING CULVERT INVERTS. EXISTING INVERTS ARE TO CULVERT INVERT, NOT SILT ELEVATION. STATIONING PROVIDED FOR REFERENCE ONLY. STATIONING DOES NOT NECESSARILY FOLLOW CENTERLINE ROADWAY.

ROUTE NO.	SECTION	COUNTY	TOTAL SHEETS	SHEET NO.
FAS 712 (CH 24)	05-00110-00-DR	FAYETTE	34	13
FEDERAL AID PROJECT		ILLINOIS	PROJECT	

CONTRACT NO. 95577

SE 1/4, SEC 11, T8N, R1E, 3RD P.M.

SE 1/4, SEC 11, T8N, R1E, 3RD P.M.



NE 1/4, SEC 14, T8N, R1E, 3RD P.M.

NE 1/4, SEC 14, T8N, R1E, 3RD P.M.

MATCHLINE 5
STA. 155+00

MATCHLINE 6
STA. 170+00

PI STA. 160+33.00
 N 902665.85
 E 780482.68
 I = 00°40'17"R

CIRCULAR
 D = 01°20'54"
 D_a = 00°14'27"
 D_c = 00°14'27"
 CD = S 86°56'22" E
 T = 280.01
 R = 23798.81
 L = 560.00
 C = 559.99
 E = 1.65
 M = 1.65

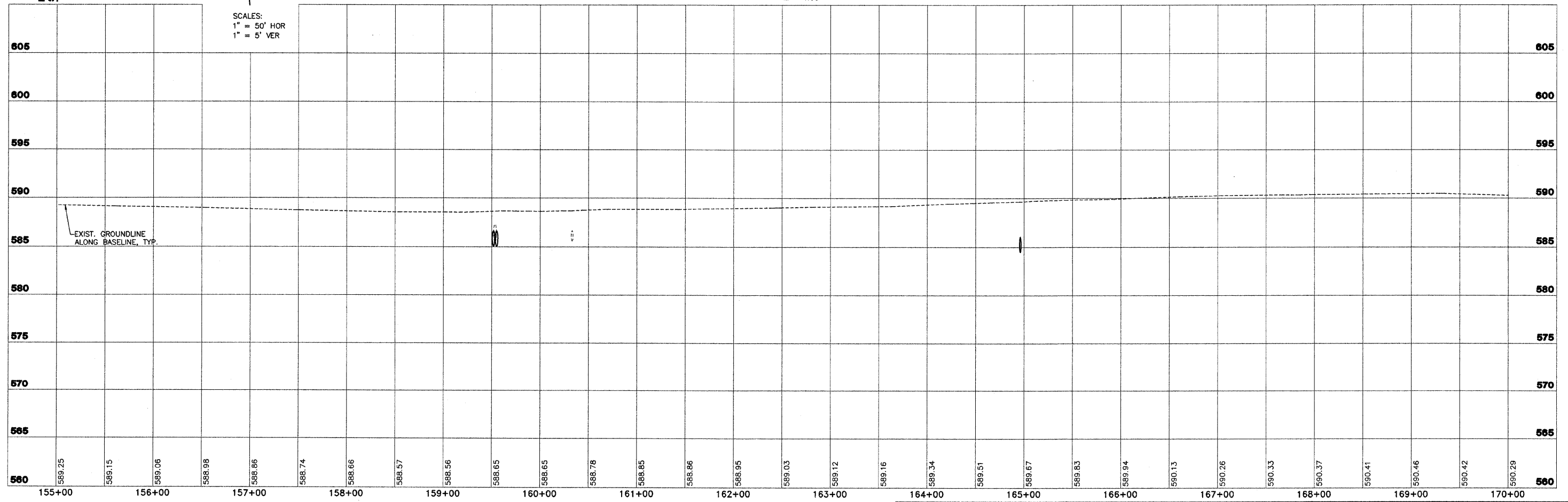
PI STA. 163+13.00
 N 902654.19
 E 780762.45
 I = 01°20'54"R

PI STA. 165+93.00
 N 902635.95
 E 781041.87
 I = 00°44'38" L

PI STA. 168+79.74
 N 902620.99
 E 781328.21
 I = 05°40'46"R

CIRCULAR
 D = 05°40'46"
 D_a = 00°59'28"
 D_c = 00°59'28"
 CD = S 84°10'10" E
 T = 286.73
 R = 5780.67
 L = 573.00
 C = 572.77
 E = 7.11
 M = 7.10

SCALES:
 1" = 50' HOR
 1" = 5' VER



	FAS 712 (C.H. 24) SECTION 05-00110-00-DR FAYETTE COUNTY, ILLINOIS		PLAN AND PROFILE STA. 155+00 TO STA. 170+00	
	SURVEY	JAS	CHECKED	DATE
	DESIGN	MRQ	APPROVED	REVISED
	DRAWN	BLT		JOB NO. 200801393