

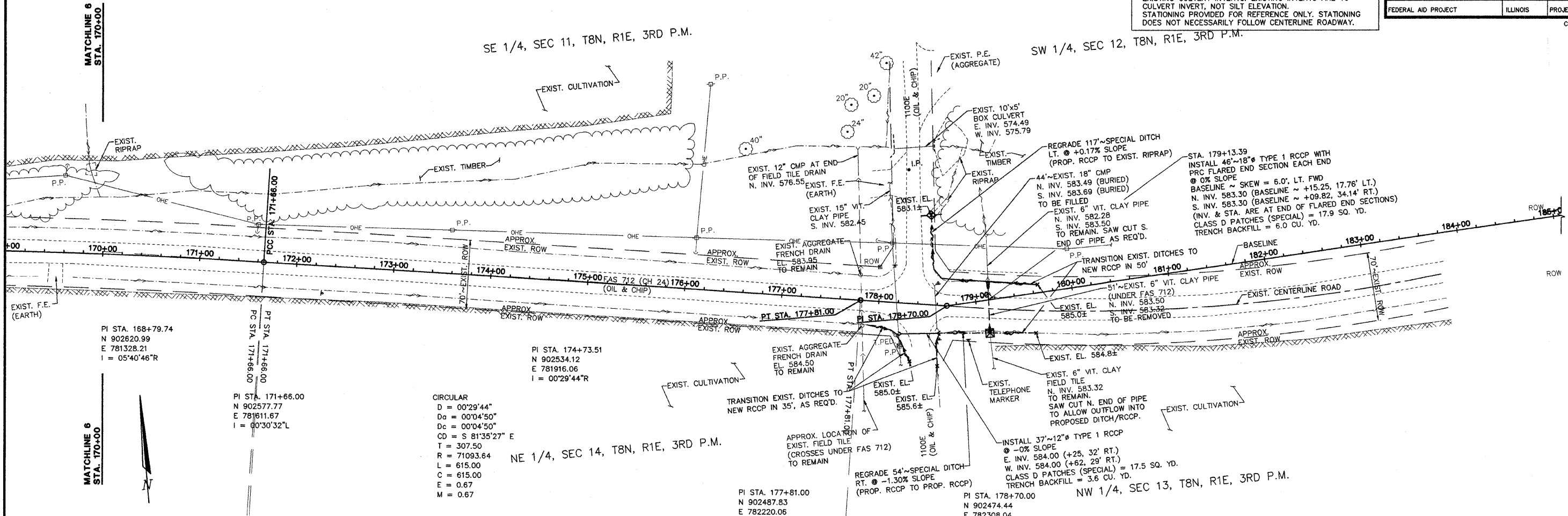
ROUTE NO.	SECTION	COUNTY	TOTAL SHEETS	SHEET NO.
FAS 712 (CH 24)	05-00110-00-DR	FAYETTE	34	14
FEDERAL AID PROJECT		ILLINOIS	PROJECT	
CONTRACT NO. 95577				

NOTE:
 IN ADDITION TO CONTROL AS SHOWN ON SHEET 2, VERTICAL CONTROL SHALL BE VERIFIED UTILIZING A MINIMUM OF 2 EXISTING CULVERT INVERTS. EXISTING INVERTS ARE TO CULVERT INVERT, NOT SILT ELEVATION. STATIONING PROVIDED FOR REFERENCE ONLY. STATIONING DOES NOT NECESSARILY FOLLOW CENTERLINE ROADWAY.

SE 1/4, SEC 11, T8N, R1E, 3RD P.M.

SW 1/4, SEC 12, T8N, R1E, 3RD P.M.

NE 1/4, SEC 14, T8N, R1E, 3RD P.M.



PI STA. 168+79.74
 N 902620.99
 E 781328.21
 I = 05°40'46"R

PI STA. 171+66.00
 N 902577.77
 E 781611.67
 I = 00°30'32"L

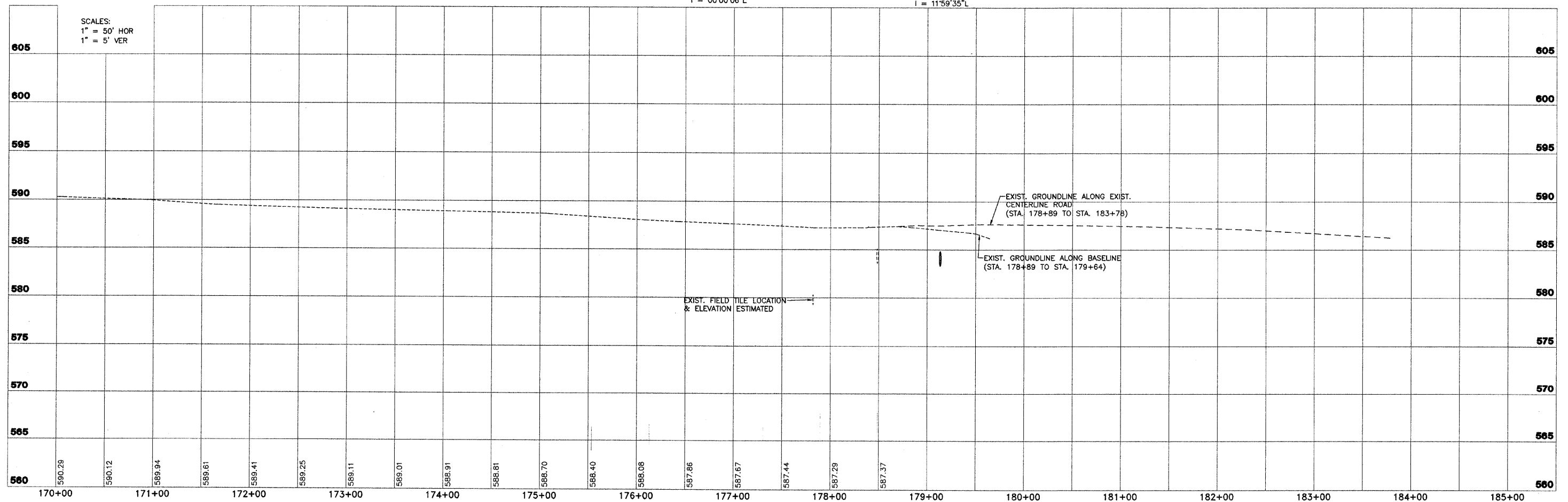
PI STA. 174+73.51
 N 902534.12
 E 781916.06
 I = 00°29'44"R

CIRCULAR
 D = 00°29'44"
 Da = 00°04'50"
 Dc = 00°04'50"
 CD = S 81°35'27" E
 T = 307.50
 R = 71093.64
 L = 615.00
 C = 615.00
 E = 0.67
 M = 0.67

PI STA. 177+81.00
 N 902487.83
 E 782220.06
 I = 00°00'06"L

PI STA. 178+70.00
 N 902474.44
 E 782308.04
 I = 11°59'35"L

SCALES:
 1" = 50' HOR
 1" = 5' VER



AECOM
 2524 South Broadway
 Selma, Illinois 62881
 618.548.3600
 www.aecom.com
 Copyright 2009 © by AECOM
 A Design Firm Reg. No. 19400206

FAS 712 (C.H. 24)
SECTION 05-00110-00-DR
FAYETTE COUNTY, ILLINOIS

PLAN AND PROFILE
STA. 170+00 TO STA. 185+00

SURVEY	CHECKED	DATE
JAS	APPROVED	03/25/09
MRQ	REVISED	
BLT	JOB NO.	200801393

K:\PROJECTS\200801393\PLAN\PCPD10001_3-24-09