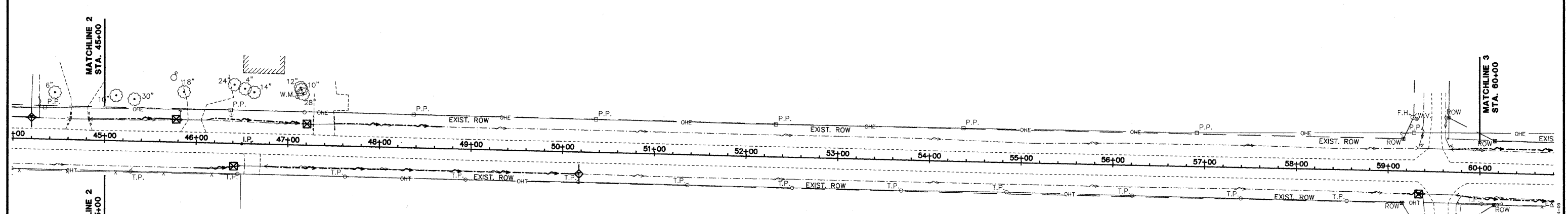
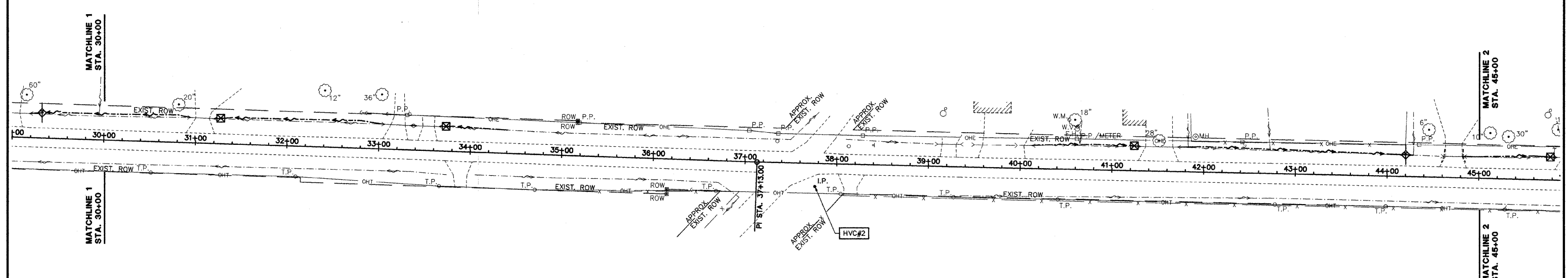
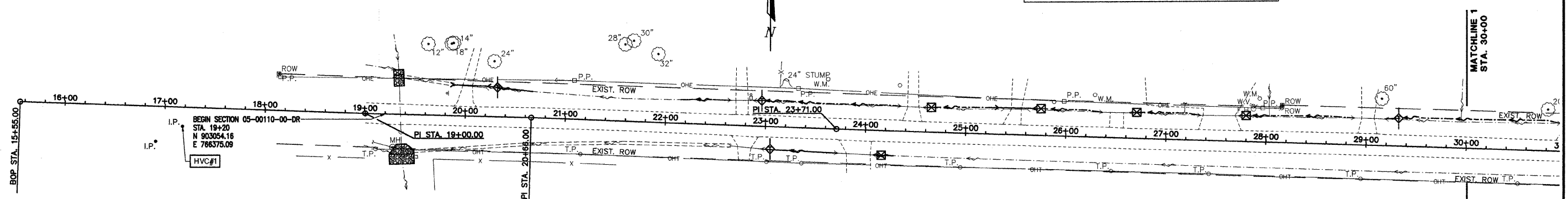


NOTE:
 IN ADDITION TO CONTROL AS SHOWN ON SHEET 2, VERTICAL CONTROL SHALL BE VERIFIED UTILIZING A MINIMUM OF 2 EXISTING CULVERT INVERTS. EXISTING INVERTS ARE TO CULVERT INVERT, NOT SILT ELEVATION. STATIONING PROVIDED FOR REFERENCE ONLY. STATIONING DOES NOT NECESSARILY FOLLOW CENTERLINE ROADWAY.

ROUTE NO. FAS 712 (CH 24)	SECTION 05-00110-00-DR	COUNTY FAYETTE	TOTAL SHEETS 34	SHEET NO. 30
FEDERAL AID PROJECT		ILLINOIS PROJECT	CONTRACT NO. 95577	



NOTES

PERIMETER EROSION BARRIER, TEMPORARY DITCH CHECKS AND TEMPORARY STORM SEWER PROTECTION OF INFLUENT PIPE END SECTIONS AND INLETS, SHALL BE PROVIDED (AS REQUIRED BY THE DRAWINGS), CONSTRUCTED AND MAINTAINED IN ACCORDANCE WITH IDOT STANDARD 280001-04 AND SECTION 280 OF I.D.O.T. STANDARD SPECIFICATIONS FOR ROAD AND BRIDGE CONSTRUCTION. PROVIDE INLET AND OUTLET PROTECTION IMMEDIATELY AFTER CONSTRUCTING INLETS AND OUTLETS.

CONTRACTOR WILL BE REQUIRED TO SUBMIT CERTIFICATION STATEMENT FOR NPDES. FULL COMPLIANCE WITH ALL TERMS OF THE NPDES PERMIT MUST BE STRICTLY ADHERED TO.

SEE PLAN AND PROFILE SHEETS FOR LOCATIONS AND DETAILS OF RIPRAP PADS.

SEE SHEETS 2 AND 2A FOR ADDITIONAL STORM SEWER INFORMATION.

LEGEND

- EXISTING SURFACE DRAINAGE
- OR ■ NEW STORM INLET
- ▭ NEW STORM SEWER END SECTION
- NEW MANHOLE
- NEW DITCH FLOWLINE
- ◇ OR ◇ NEW TEMPORARY DITCH CHECK
- ⊠ NEW INLET/END SECTION PROTECTION
- NEW PERIMETER EROSION BARRIER

AECOM
 2524 South Broadway
 Suite 100, Illinois 62201
 618.548.3500
 www.aecom.com
 Copyright 2008 by AECOM
 IL Design Firm Reg. No. 194023708

FAS 712 (C.H. 24)
SECTION 05-00110-00-DR
FAYETTE COUNTY, ILLINOIS

EROSION CONTROL PLAN
STA. 15+55 TO STA. 60+00

SURVEY	JAS	CHECKED	DATE
DESIGN	MRQ	APPROVED	03/25/09
DRAWN	BLT		REVISED
			JOB NO.
			200801393