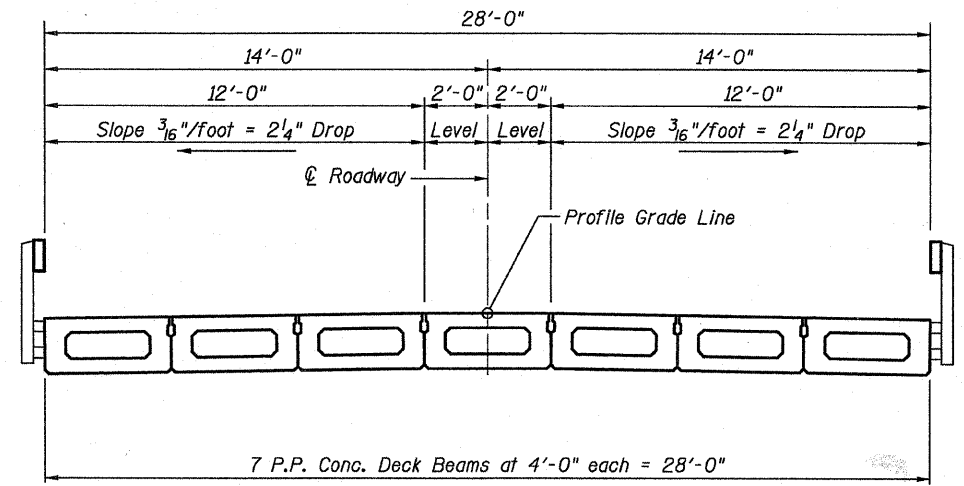
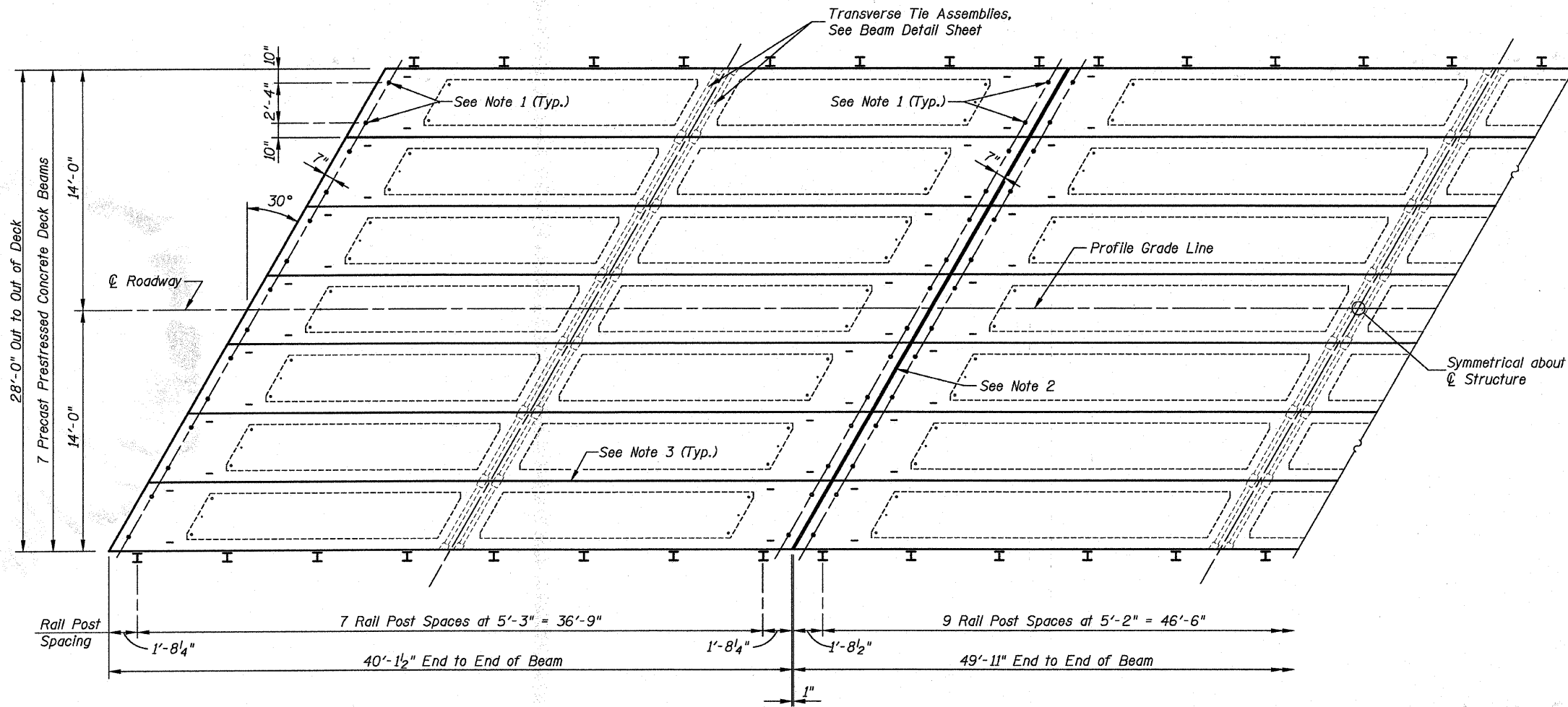


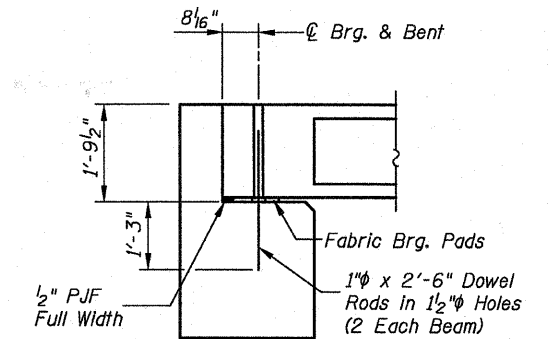
TYPICAL ELEVATION



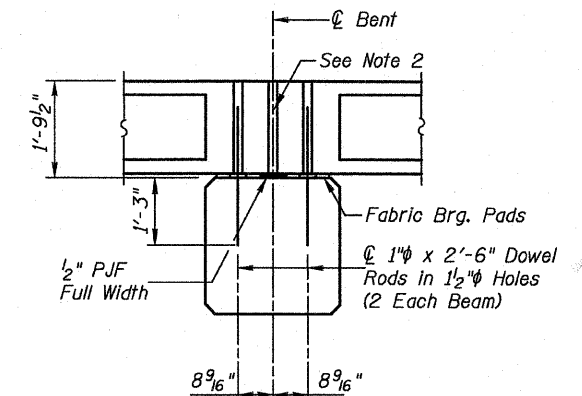
CROSS SECTION



PLAN



SECTION AT ABUTS.
(Along C Beams)



SECTION AT PIERS
(Along C Beams)

BILL OF MATERIAL

Steel Railing, Type S-1	264 Lin. Ft.
Portland Cement Mortar Fairing Course	780 Lin. Ft.

P.P.C. DECK BEAM SUPERSTRUCTURE

SHEET NO. 2 10 SHEETS	T.R.	SECTION	COUNTY	TOTAL SHEETS	SHEET NO.
	137	03-10115-00-BR	CLINTON	15	5
S.N. 014-4055			CONTRACT NO. 97374		
FED. ROAD DIST. NO.		ILLINOIS	FED. AID PROJECT		

DESIGNED	K.M.M.
CHECKED	L.D.G.
DRAWN	K.H.L.
CHECKED	B.G.H.

NOTES

- After beams have been erected, holes shall be drilled into substructure and anchor dowels placed. Dowel holes shall be filled with non-shrink grout to top of beam and allowed to cure min. 24 hrs. prior to grouting the shear keys.
- Nominal 1" joint at C Pier shall be filled with non-shrink grout.
- Longitudinal keys shall be grouted.

