

B.M. - RR Spike in PP
26' Lt. Sta. 14+20
Elev. 200.00

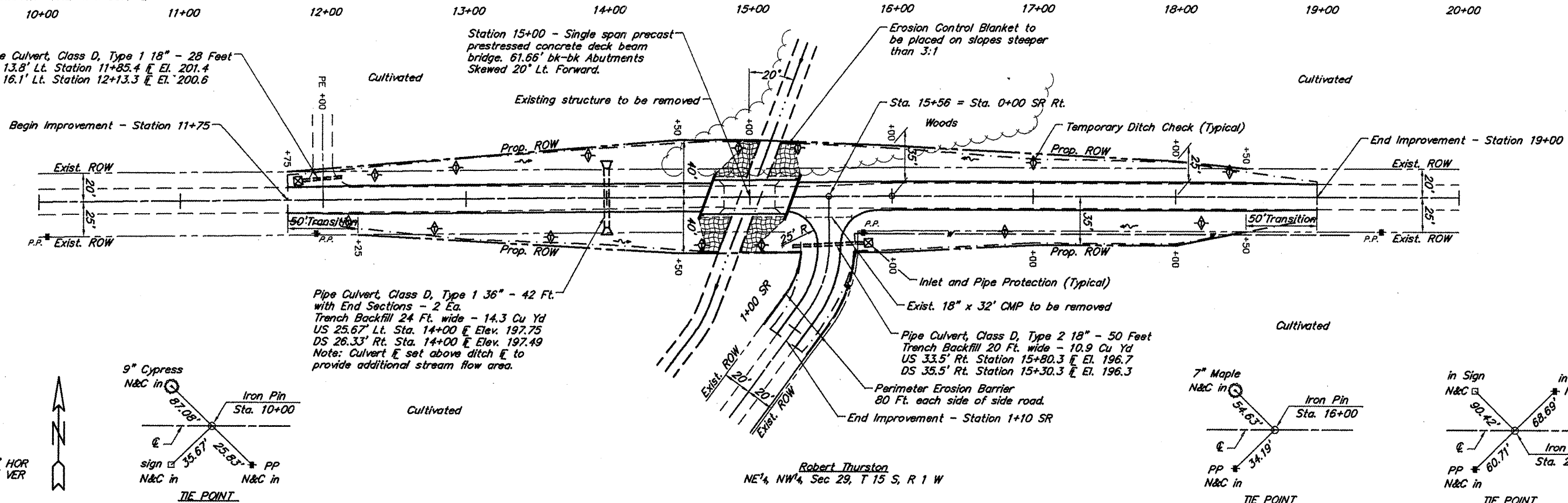
Existing Structure - Timber deck
with steel stringers on concrete
abutments. 16.2' W x 36.0' L

Stanley McClellan
SE 1/4, SW 1/4, Sec 20, T 15 S, R 1 W

PI Sta. = 16+00
Δ = 0°40'00" R
No Curve

Tree Removal Acres: The limits of the tree
removal shall be between a line 15 feet left
of the existing centerline of the roadway and
the proposed left ROW from Station 14+40 to
Station 16+40. Total area 0.1 Acres

ROUTE	SECTION	COUNTY	TOTAL SHEETS	SHEET NO.
TR 95	94-01166-00-BR	PULASKI	13	2
PROJECT NO. BROS-153(30)		CONTRACT NO. 99327		



SCALES:
1" = 80' HOR
1" = 10' VER

