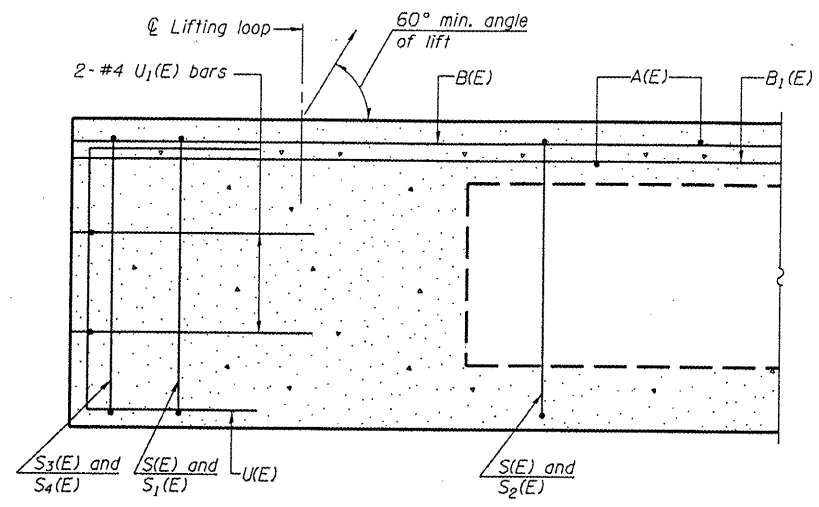
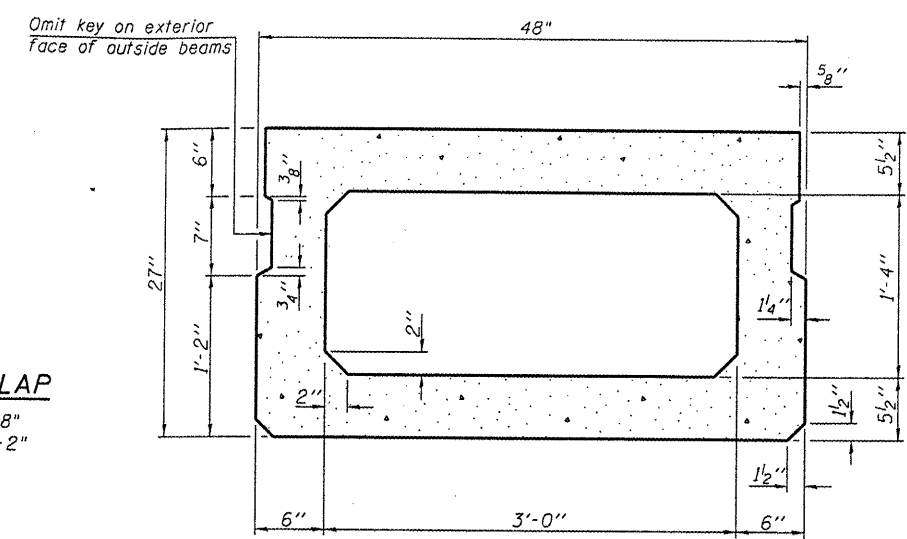


ROUTE	SECTION	COUNTY	TOTAL SHEETS	SHEET NO.
TR 95	94-01166-00-BR	PULASKI	13	7
PROJECT NO. BROS-153(30)			CONTRACT NO. 99327	

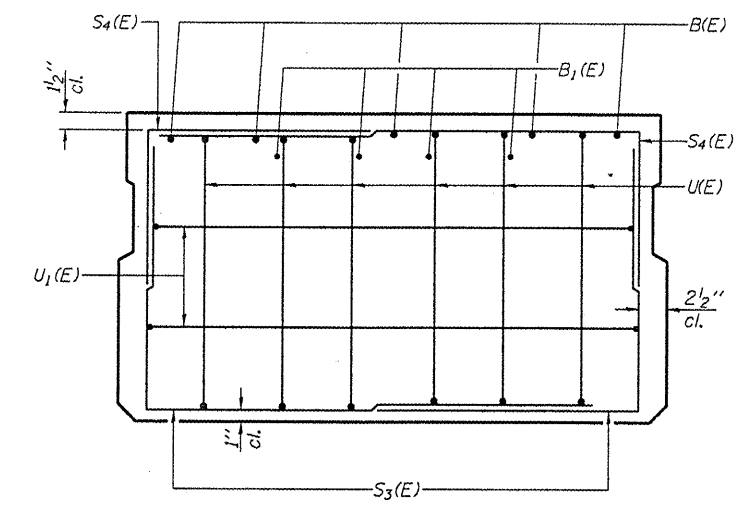


SECTION C-C

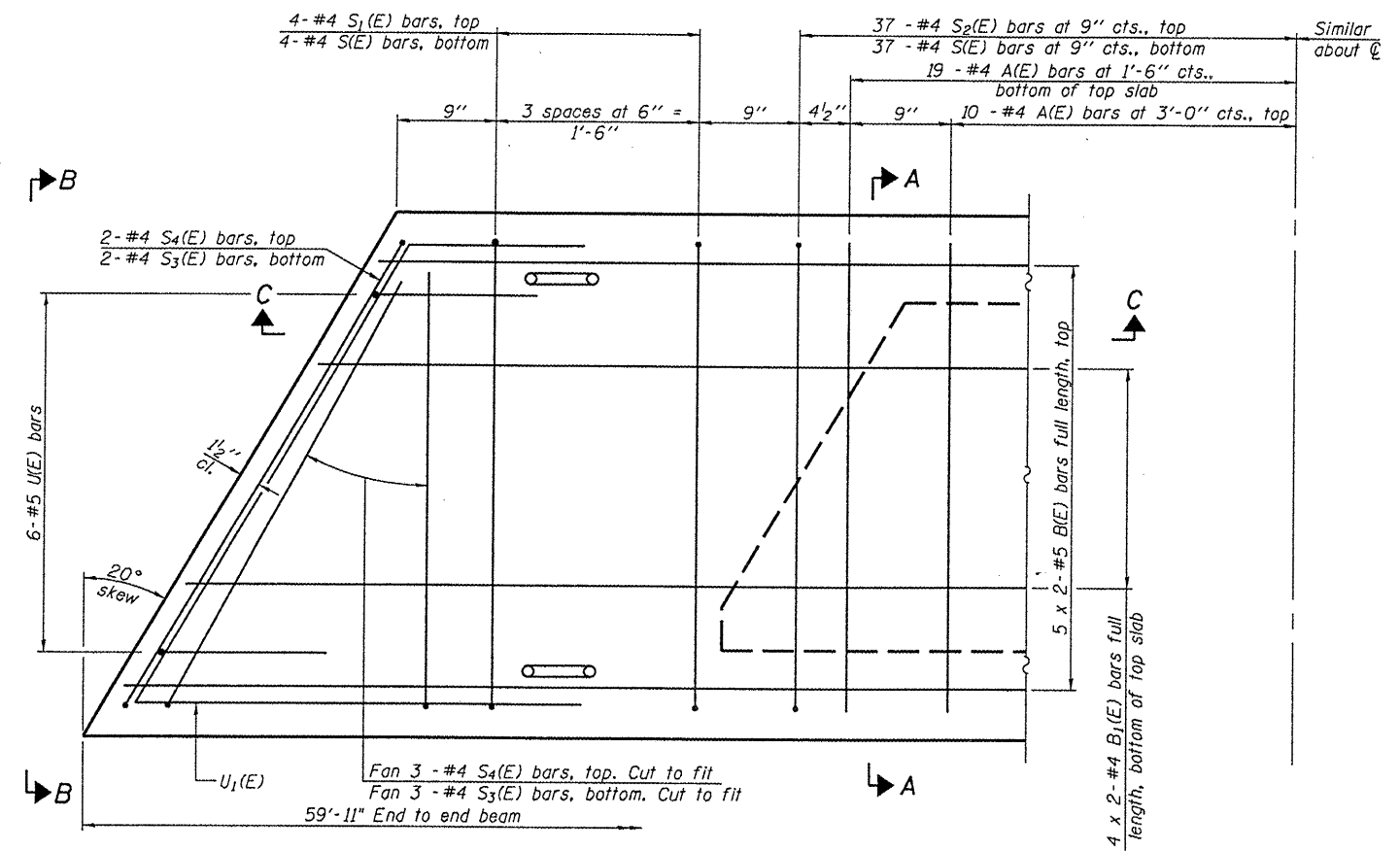
MIN. BAR LAP
 #4 bar = 1'-8"
 #5 bar = 2'-2"



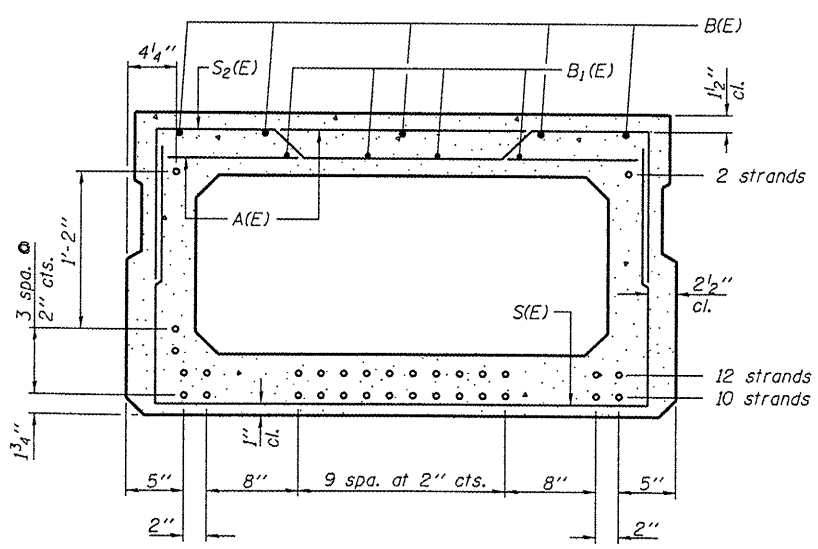
SECTION A-A
(Showing dimensions)



VIEW B-B



PLAN VIEW



SECTION A-A
(Showing reinforcement and permissible strand locations)
 Note: Place the number of strands specified in each row symmetrically about the centerline of beam in the permissible strand locations shown.

BAR LIST
ONE BEAM ONLY
 (For information only)

Bar	No.	Size	Length	Shape
A(E)	58	#4	3'-7"	—
B(E)	10	#5	31'-0"	—
B1(E)	8	#4	30'-8"	—
S(E)	81	#4	7'-5"	┌┐
S1(E)	8	#4	7'-3"	┌┐
S2(E)	74	#4	7'-6"	┌┐
S3(E)	10	#4	4'-8"	┌┐
S4(E)	10	#4	4'-7"	┌┐
U(E)	12	#5	4'-6"	┌┐
U1(E)	4	#4	7'-7"	┌┐

Note: Spacing of S(E) and S2(E) bars may be adjusted up to 4" in the immediate area of the transverse tie diaphragms to miss the block outs for the transverse ties.

DESIGNED	SDS
CHECKED	CWC
DRAWN	DLH
CHECKED	SDS

WHKS & CO.
 ENGINEERS PLANNERS LAND SURVEYORS
 MASON CITY, IOWA DUBUQUE, IOWA AMES, IOWA
 E. DUBUQUE, ILLINOIS SPRINGFIELD, ILLINOIS ROCHESTER, MINNESOTA

PPC DECK BEAM DETAILS (27" X 4'-0")
 TOWNSHIP ROUTE 95 OVER
 PULASKI SLOUGH
 SECTION 94-01166-00-BR
 PULASKI COUNTY
 STA. 15+00

PD-2748-L

8-29-07

Date: 11/02/08
 Operator: ghs/ab/af
 File Name: L:\VAD\DOT\BROS\99327\BROS_VAD\99327_05\CADD_Stroke\Pulaski_94-01166-00-BR.dgn