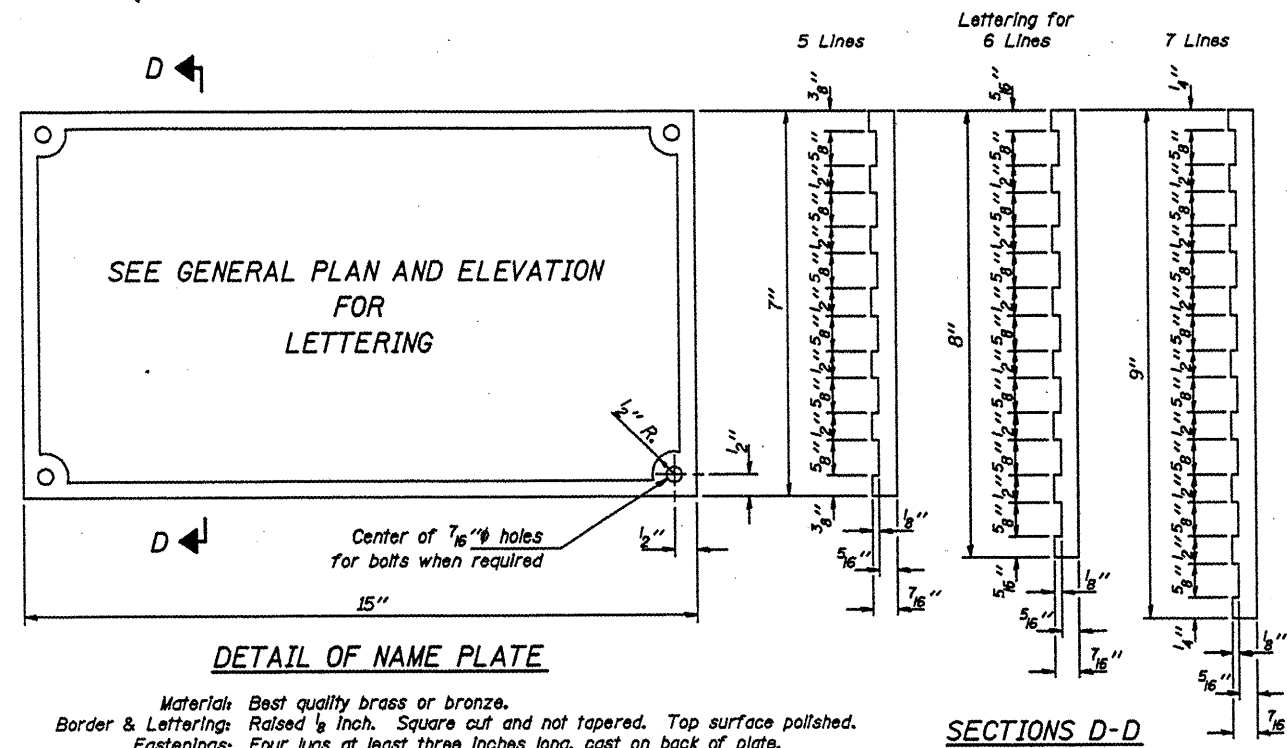
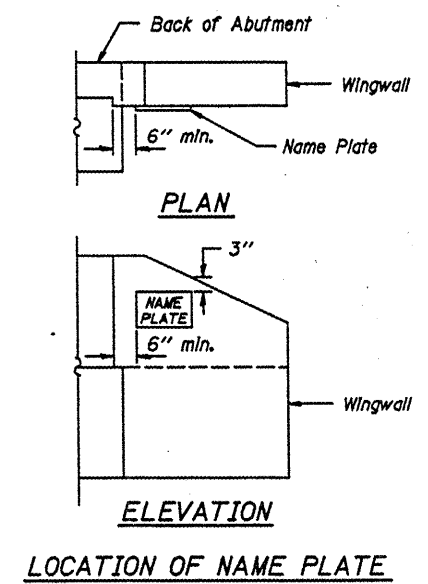


ROUTE	SECTION	COUNTY	TOTAL SHEETS	SHEET NO.
TR 80	00-01198-00-BR	MASSAC	13	10
PROJECT NO. BROS-127(19)			CONTRACT NO. 99354	



DETAIL OF NAME PLATE

Material: Best quality brass or bronze.
 Border & Lettering: Raised 1/8 inch. Square cut and not tapered. Top surface polished.
 Fastenings: Four lugs at least three inches long, cast on back of plate.



LOCATION OF NAME PLATE

SECTIONS D-D

Illinois Department of Transportation

PASSED APRIL 4, 2005
 Thomas S. [Signature]
 Engineer of Bridge Design

APPROVED APRIL 4, 2005
 Ralph E. [Signature]
 Engineer of Bridge and Structures

NAME PLATE
 STANDARD CN