

DU071

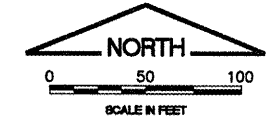
PATH: K:\0425704-Apron_Ph4\Sheet\
FILE: apron-grade2.dwg
UPDATE BY: johse
SURVEY BOOK #
XREF DWG:
XREF DWG:
DATE: Wed 12/8/04 1:22pm

NOTES

- 1. A QUANTITY OF TOPSOIL TO BE DETERMINED IN THE FIELD MAY BE SPREAD EAST OF FREEDOM DRIVE AND GRADED TO DRAIN BY THE CONTRACTOR. (COST INCLUDED TO UNCLASSIFIED EXCAVATION) ANY EXCESS TOPSOIL SHALL BE HAULED OFFSITE BY THE CONTRACTOR. (COST INCLUDED TO UNCLASSIFIED EXCAVATION)
2. IF ONLY THE BASE BID IS AWARDED, THE ENGINEER MAY PROVIDE THE CONTRACTOR WITH A REVISED GRADING PLAN.

LEGEND

- NEW ELEVATION
NEW CONTOUR
EXISTING CONTOUR
NEW MANHOLE
NEW GRADING LIMITS
FLOW DIRECTION
NEW FENCE



REVISIONS

Table with columns: NUMBER, BY, DATE

THIS BAR IS EQUAL TO 2" AT FULL SCALE (34X22).

DUPAGE AIRPORT
WEST CHICAGO, ILLINOIS
SOUTH FLIGHT CENTER APRON - PHASE 4

GRADING PLAN - SHEET 2

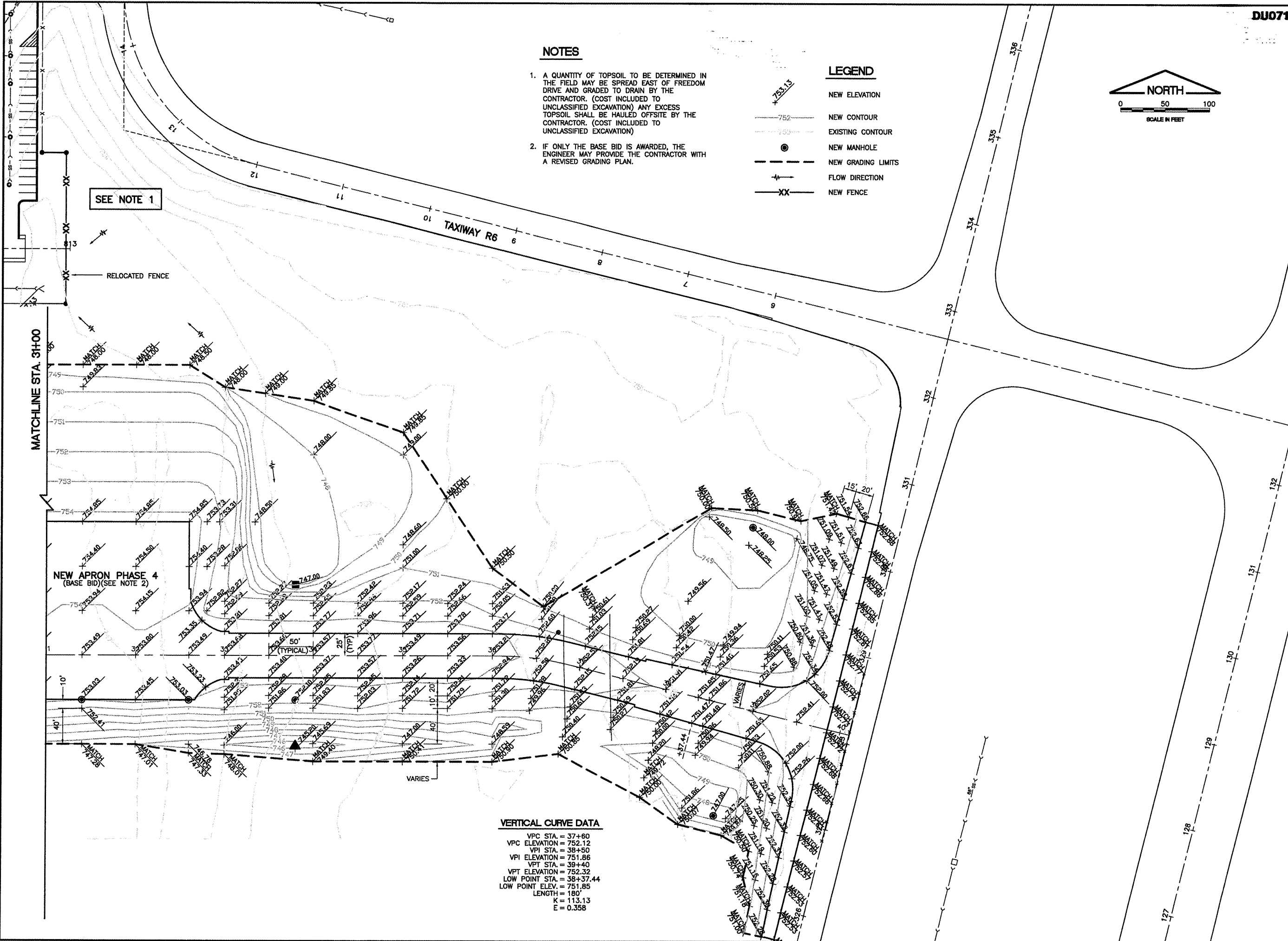
CMT logo and company name: CRAWFORD, MURPHY & TILLY, INC. CONSULTING ENGINEERS License No. 184-000613



Table with project details: DESIGN BY: MJS / JRL, DRAWN BY: JRO, CHECKED BY: MJS / DKP, APPROVED BY: MJS, DATE: 01/30/09, JOB No: 04257-04-00-00, A.I.P. PROJECT: 3-17-0017-B18, ILLINOIS PROJECT: DPA-3391, SHEET 13 OF 31 SHEETS

VERTICAL CURVE DATA

VPC STA. = 37+60
VPC ELEVATION = 752.12
VPI STA. = 38+50
VPI ELEVATION = 751.86
VPT STA. = 39+40
VPT ELEVATION = 752.32
LOW POINT STA. = 38+37.44
LOW POINT ELEV. = 751.85
LENGTH = 180'
K = 113.13
E = 0.358



SEE NOTE 1

RELOCATED FENCE

MATCHLINE STA. 31+00

NEW APRON PHASE 4 (BASE BID)(SEE NOTE 2)

VARIES