

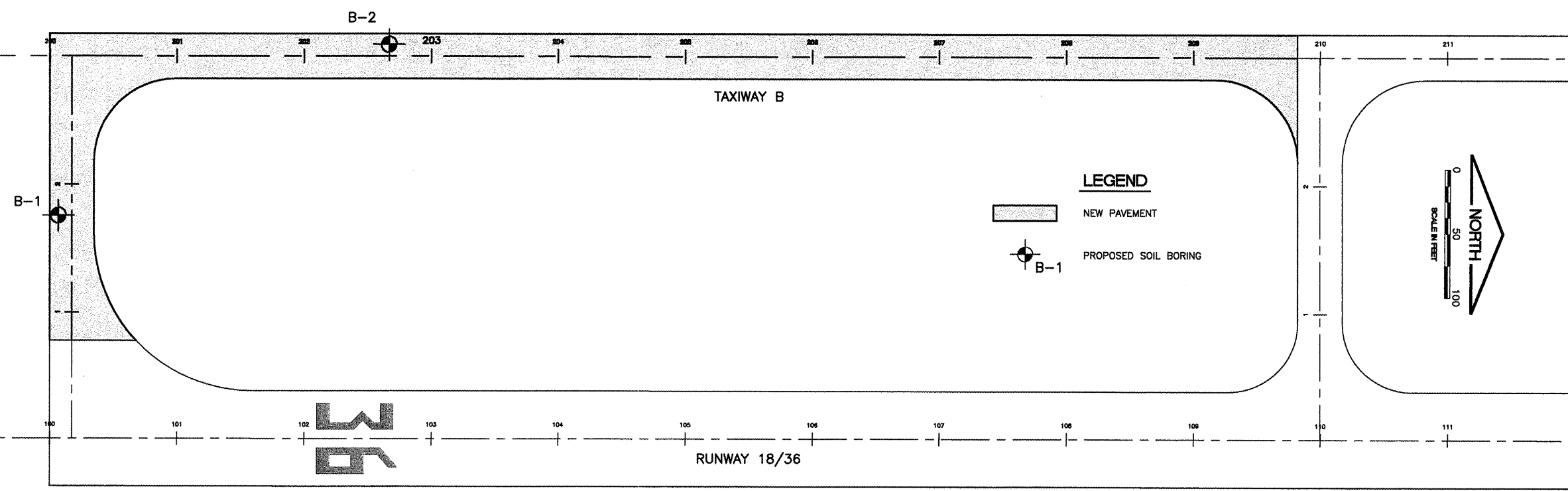
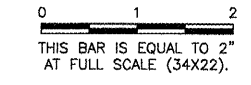
LA038

K:\Lansing\p\0529702\Draw\Sheets
 FILE: 30-enginfo1.dwg
 LAYOUT: Layout 1
 UPDATE BY: Tony Marin
 SURVEY BOOK #
 DATE: Friday, February 27, 2009 3:20:18 PM
 XREF DWG: Base-by.dwg
 tbclnt.dwg
 tb.dwg

GEOTECHNICAL LAYOUT TABLE					
BORING NO.	LOCATION	NORTHING	EASTING	DEPTH	ELEVATION
B-1	199+89.4, 124.3' RT. CENTERLINE TAXIWAY B	1770564.7423	720443.1217	10'	613.87
B-2	202+49.6, 9.0' LT. CENTERLINE TAXIWAY B	1770824.0703	720308.0628	10'	615.54

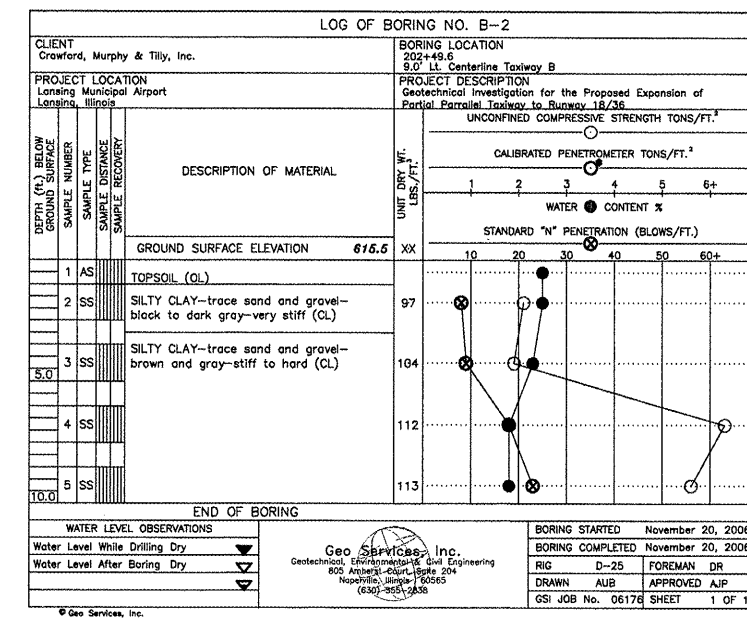
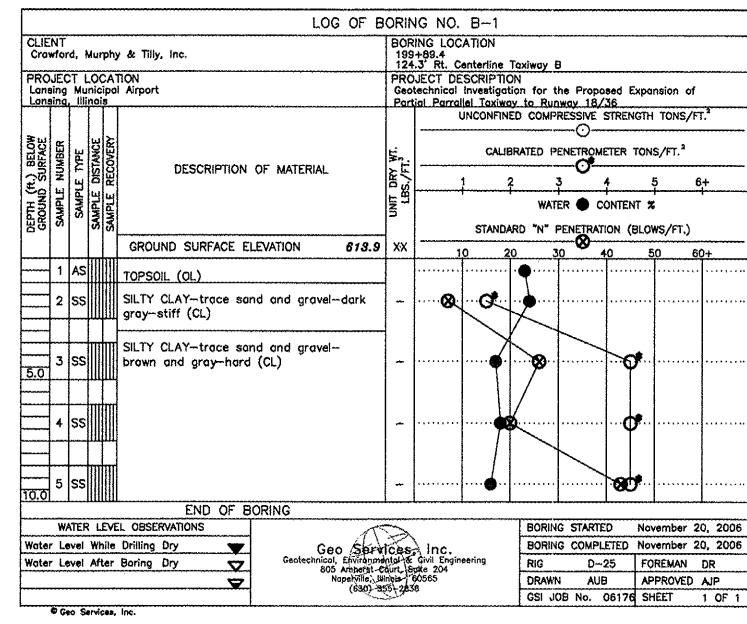
LANSING DRAINAGE DITCH

REVISIONS		
NUMBER	BY	DATE



LANSING MUNICIPAL AIRPORT
 LANSING, ILLINOIS
 PARTIAL PARALLEL TAXIWAY TO RUNWAY 18/36

ENGINEERING INFORMATION



© Copyright CMT, Inc.

CMT
 CRAWFORD, MURPHY & TILLY, INC.
 CONSULTING ENGINEERS
 License No. 184-000618

Lansing Municipal Airport

DESIGN BY:	ARM
DRAWN BY:	JRO
CHECKED BY:	ARM
APPROVED BY:	ARM
DATE:	02/27/09
JOB No:	05297-02
IL PROJECT: IG0-3681	
A.I.P. PROJECT: 3-17-0121-B26	

SHEET 30 OF 30 SHEETS