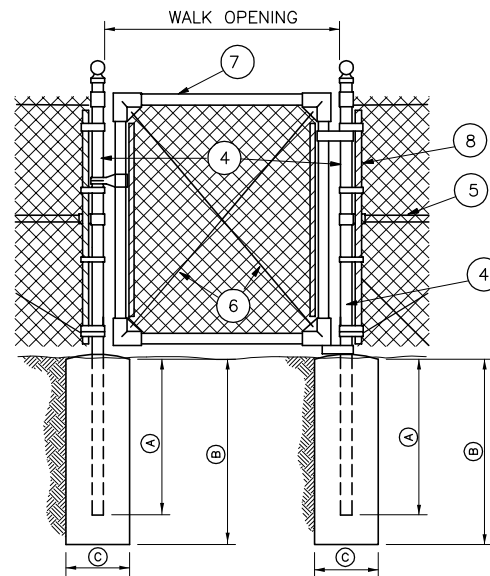
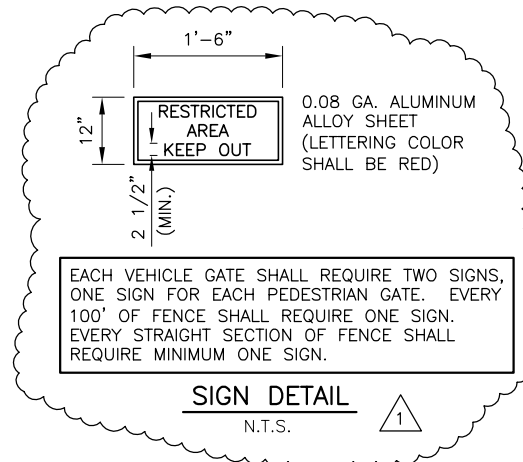


FENCE DETAIL
N.T.S.

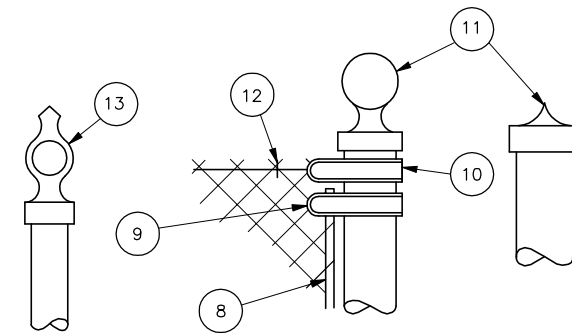


PEDESTRIAN GATE DETAIL
N.T.S.



SIGN DETAIL
N.T.S.

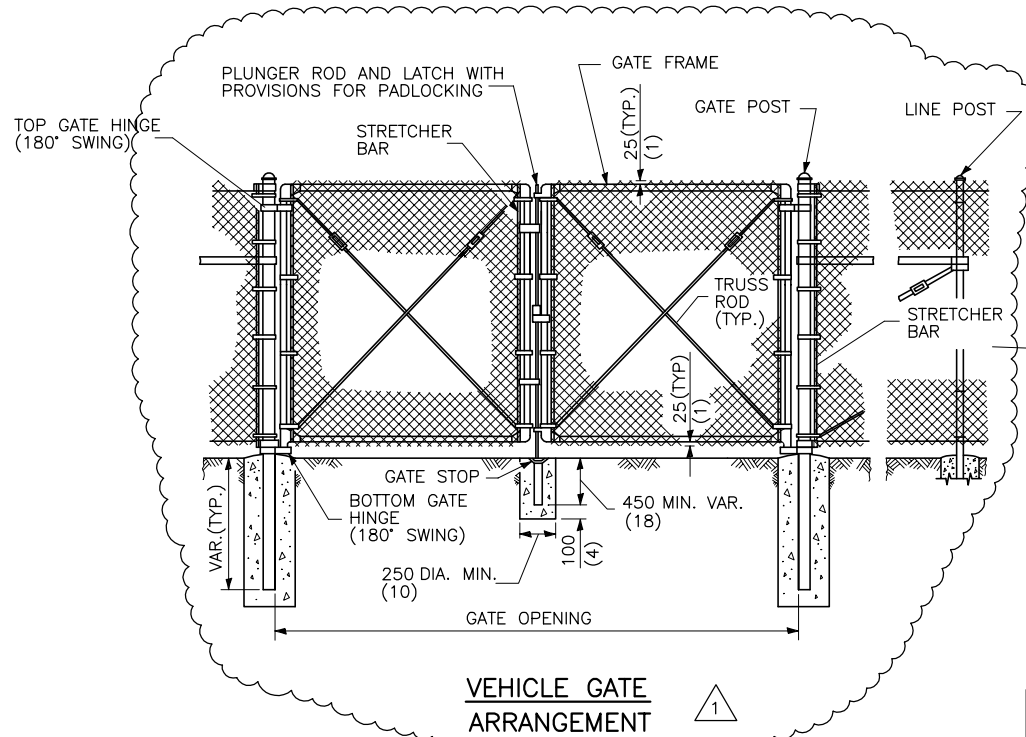
- LEGEND**
- ① FABRIC
 - ② END, CORNER OR PULL POST
 - ③ LINE POST
 - ④ GATE POST
 - ⑤ BRACE
 - ⑥ TRUSS ROD
 - ⑦ GATE FRAME
 - ⑧ STRETCHER BAR 1/4' X 3/4" PLATE
 - ⑨ STRETCHER BAR BAND
 - ⑩ END OR CORNER CLAMP
 - ⑪ POST TOPS (OTHER THAN LINE POSTS)
 - ⑫ FABRIC TIES
 - ⑬ LINE POST TOPS
 - ⑭ ONE-HALF FABRIC HEIGHT OR AS RECOMMENDED BY MANUFACTURER



POST TOPS TO BE PRESSURE FITTED OR SCREWED. POST TOPS MAY BE ELIMINATED FOR ALL POSTS EXCEPT PIPE POSTS. IF POST TOPS ARE ELIMINATED, POST LENGTH

SHALL BE INCREASED 3".

POST TOPS
N.T.S.

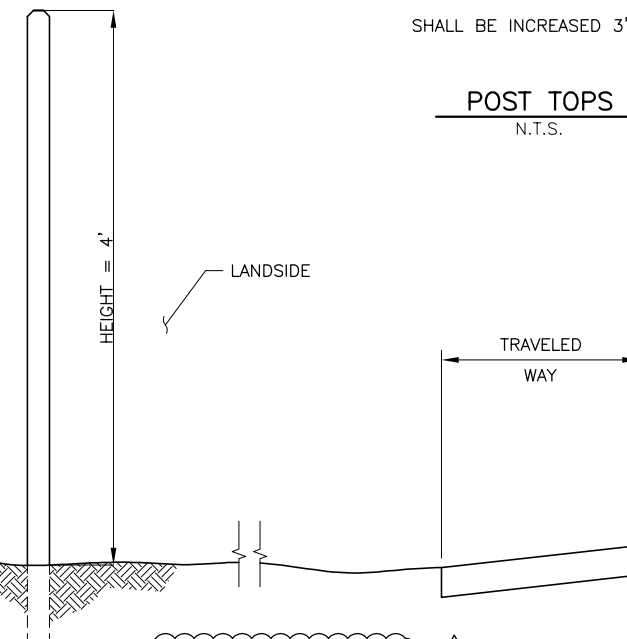


VEHICLE GATE ARRANGEMENT
①

CONCRETE DETAIL
N.T.S.

① MOUND CONCRETE (AR610000) TO PROMOTE DRAINAGE AWAY FROM POST (TYP. ALL LOCATIONS)

AIRSIDE



FENCE HEIGHT
N.T.S.

FENCE NOTES

- WEIGHTS OF MATERIALS SHOWN IN TABLE ARE FOR ASTM F 1043, GROUP IA. SIZES SHOWN ARE FOR STEEL AND ALUMINUM. EQUIVALENT ASTM F 1043 ALTERNATIVES MAY BE USED.
- PULL POSTS SHALL BE USED AT SHARP BREAKS IN VERTICAL GRADE OR AT APPROXIMATE 500' CENTERS ON STRAIGHT RUNS OR AS DIRECTED BY THE ENGINEER.
- DRILLED HOLES C IN SOLID ROCK SHALL PROVIDE A DIAMETER OF NOT LESS THAN 2" GREATER THAN THE MAXIMUM TRANSVERSE DIMENSION OF THE POST SECTION.
- ALL POSTS SHOWN HAVE PROVISIONS TO SECURELY HOLD THE TOP TENSION WIRE IN POSITION AND ALLOW FOR REMOVAL AND REPLACEMENT OF A POST WITHOUT DAMAGING THE TOP TENSION WIRE.

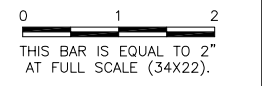
WIRE SIZE AND HEIGHT OF FABRIC			
SPECIFIED DIAMETER		HEIGHT OF FABRIC	
INCHES	GAGE	MESH INCHES	INCHES
0.120	11	2	36, 42
0.148	9	2	48, 60
0.192	6	2	72, 84

	WIDTH	SIZE (IN.)	LBS/FT.
② END CORNER OR PULL POST	N/A	2 1/2" DIA.	5.79
③ LINE POST	N/A	2" DIA.	3.65
④ GATE POST (SINGLE GATE OR 1 LEAF OF DOUBLE)	* 6'	2 1/2" DIA.	5.79
	* 13'	3 1/2" DIA.	9.10
	* 18'	6" DIA.	18.97
	* 18'	8" DIA.	24.70
⑤ BRACE	N/A	1 1/4" DIA.	2.27
⑥ TRUSS ROD	N/A	3/8"	-
⑦ GATE FRAME	N/A	1 1/2" DIA.	2.72

DESCRIPTION		HEIGHT OF FENCE			
		48" SIZE (IN.)	60" SIZE (IN.)	72" SIZE (IN.)	96" SIZE (IN.)
② END CORNER & PULLPOST	(A)	30"	36"	36"	42"
	(B)	36"	42"	42"	48"
	(C)	10"	12"	12"	14"
③ LINE POST	(A)	24"	27"	36"	36"
	(B)	30"	36"	42"	42"
	(C)	10"	12"	12"	12"
④ GATE POST	(A)	30"	36"	36"	42"
	(B)	36"	42"	42"	48"
	(C)	10"	12"	12"	14"

REVISIONS

NUMBER	BY	DATE
1	JEF	6/3/09



PINCKNEYVILLE-DUQUOIN AIRPORT
PERRY COUNTY, ILLINOIS
T-HANGAR SITE WORK
FENCING DETAILS

© Copyright CMT, Inc.
CMT
 CRAWFORD, MURPHY & TILLY, INC.
 CONSULTING ENGINEERS
 License No. 184-000613

DESIGN BY: TJH
 DRAWN BY: CMT
 CHECKED BY: JEF
 APPROVED BY: JEF
 DATE: 4/17/2009
 JOB No: 07062-03-00
 IL PROJECT NO. PJY-3373
 A.I.P. PROJECT NO. 3-17-0037-B6
 SHEET 13 OF 17 SHEETS