

INDEX OF SHEETS

1. COVER SHEET
2. GENERAL NOTES
3. SUMMARY OF QUANTITIES
- 4-6. DMS AND CAMERA DETAILS

06-12-2015 LETTING ITEM 057

STATE OF ILLINOIS

DEPARTMENT OF TRANSPORTATION

DIVISION OF HIGHWAYS

**PROPOSED
HIGHWAY PLANS**

VARIOUS ROUTES

SECTION D2 DMS 2015-1

**FURNISH AND ERECT OVERHEAD MESSAGE BOARD SIGN
HENRY AND ROCK ISLAND COUNTY**

C-92-062-15

F.A.I. RITE VAR.	SECTION D2 DMS 2015-1	COUNTY ILLINOIS	TOTAL SHEETS 6	SHEET NO. 1
CONTRACT NO. 64K76				

D-92-026-15



STANDARDS

- 000001-06 STANDARD SYMBOLS, ABBREVIATIONS AND PATTERNS
- 701006-05 OFF-ROAD OPERATIONS, 2L, 2W, 15' TO 24" FROM PAVEMENT EDGE
- 701101-04 OFF-ROAD OPERATIONS MULTILANE, 15' (4.5 m) TO 24" (600 mm) FROM PAVEMENT EDGE
- 701106-02 OFF-ROAD OPERATIONS, MULTILANE, MORE THAN 15' (4.5 m) AWAY
- 701400-08 APPROACH TO LANE CLOSURE, FREEWAY / EXPRESSWAY
- 701401-09 LANE CLOSURE, FREEWAY / EXPRESSWAY
- 701406-09 LANE CLOSURE, FREEWAY / EXPRESSWAY, DAY OPERATIONS ONLY
- 701426-07 LANE CLOSURE, MULTILANE, INTERMITTENT OR MOVING OPERATIONS, FOR SPEEDS > 45 MPH
- 701901-04 TRAFFIC CONTROL DEVICES

LOCATION 1 – FAI ROUTE 88

**OVERHEAD SIGN STRUCTURE
S.N.# 2S0811088L002.1
I-88 WB
(PROPOSED STA. 345 + 00 WBL)
2.1 MI. EAST OF I-80**

LOCATION 2 – FAI ROUTE 74

**OVERHEAD SIGN STRUCTURE
S.N.# 2S0371074R015.7
I-74 WB
(PROPOSED STA. 665 + 00 WBL)
1.5 MI. SOUTH OF I-74-I-80 INTERSECTION**

LOCATION 3 – FAI ROUTE 80

**OVERHEAD SIGN STRUCTURE
S.N.# 2S0371080L012.1
I-80 WB
(PROPOSED STA. 1062 + 50 WBL)
2 MI. EAST OF I-74-I-280 INTERCHANGE**

J.U.L.I.E.
JOINT UTILITY LOCATION INFORMATION FOR EXCAVATION
1-800-892-0123
OR 811

DISTRICT 2 NO. (815) 284-5468
PROJECT ENGINEER: SCOTT KULLERSTRAND

CONTRACT NO. 64K76

STATE OF ILLINOIS
DEPARTMENT OF TRANSPORTATION
DIVISION OF HIGHWAYS

SUBMITTED 3-11 20 15
PASSED Paul A. Loeten ENGINEER OF OPERATIONS

May 8 20 15
David Baranzoni P.E. ENGINEER OF DESIGN AND ENVIRONMENT

APPROVED May 8 20 15
Omer Osman P.E. DIRECTOR DIVISION OF HIGHWAYS

**PRINTED BY THE AUTHORITY
OF THE STATE OF ILLINOIS**

GENERAL NOTES

PLAN DIMENSIONS AND DETAILS RELATIVE TO THE EXISTING PLANS ARE SUBJECT TO ROUTINE VARIATIONS. THE CONTRACTOR SHALL FIELD VERIFY EXISTING DIMENSIONS AND DETAILS AFFECTING NEW CONSTRUCTION AND MAKE NECESSARY APPROVED ADJUSTMENTS PRIOR TO CONSTRUCTION OR ORDERING OF MATERIALS. SUCH VARIATIONS SHALL NOT BE CAUSE FOR ADDITIONAL COMPENSATION FOR A CHANGE IN THE SCOPE OF THE WORK. HOWEVER, THE CONTRACTOR WILL BE PAID FOR THE QUANTITY FURNISHED BASED UPON THE UNIT BID PRICE FOR THE WORK.

THE CONTRACTOR SHALL BE RESPONSIBLE FOR PROTECTING UTILITY PROPERTY FROM CONSTRUCTION OPERATIONS AS OUTLINED IN ARTICLE 107.31 OF THE STANDARD SPECIFICATIONS. THE "JULIE" NUMBER IS 1-800-892-0123. A MINIMUM OF FORTY-EIGHT (48) HOURS ADVANCE NOTICE IS REQUIRED.

THE LOCATION OF ALL UTILITIES AND PRIVATELY OWNED FACILITIES SHALL BE FIELD VERIFIED BY THE CONTRACTOR PRIOR TO THE INSTALLATION OF ANY COMPONENTS.

THE CONTRACTOR SHALL BE RESPONSIBLE FOR LOCATING EXISTING IDOT ELECTRICAL FACILITIES AT HIS/HER OWN EXPENSE IF REQUIRED. THE CONTRACTOR SHALL ALSO BE LIABLE FOR ANY DAMAGE TO IDOT FACILITIES RESULTING FROM INACCURATE LOCATING.

ELECTRICAL WORK SHALL CONFORM WITH NATIONAL, STATE, AND LOCAL CODES.

THE CONTRACTOR SHALL PROVIDE ELECTRICAL CABLE SLACK IN ACCORDANCE WITH ARTICLE 873.03 UNLESS SPECIFIED OTHERWISE.

ALL SURPLUS MATERIALS SHALL BE DISPOSED OF IN ACCORDANCE WITH ARTICLE 202.03 OF THE STANDARD SPECIFICATION.

THE CONTRACTOR SHALL BE RESPONSIBLE FOR COORDINATION WITH THE IOWA DOT REGARDING COMMUNICATION WITH DMS EQUIPMENT.

ALL ADDITIONAL CONTINUOUS RUNS OF ELECTRICAL CABLE AND CONDUIT NEEDED FOR INSTALLATION OF NEW DMS AND CAMERA EQUIPMENT SHALL BE INCLUDED IN THE COST OF TRUSS MOUNTED LED DYNAMIC SIGNS AND CLOSED -CIRCUIT TELEVISION DOME CAMERA, IP BASE, RESPECTIVELY.

ANY REFERENCE TO A STANDARD IN THESE PLANS SHALL BE

THE CONTRACTOR SHALL COORDINATE WITH SCOTT KULLERSTRAND (815) 284-5468 AND MAKE SALVAGABLE ITEMS AVAILABLE FOR PICK-UP BY THE IOWA DEPARTMENT OF TRANSPORTATION.

FILE NAME	USER NAME	DESIGNED	REVISED	STATE OF ILLINOIS DEPARTMENT OF TRANSPORTATION	GENERAL NOTES	F.A.I. RTE.	SECTION	COUNTY	TOTAL SHEETS	SHEET NO.	
C:\Users\j... \Desktop\DMS Signage	6878 w...@stateil.gov	DRAWN	REVISED			VAR	02 DMS 2015-1	VAR	6	2	
PLT SCALE 1/8"=1'-0"	PLT DATE 11/27/15	CHECKED	REVISED			CONTRACT NO. 64K76					
PLT DATE 11/27/15	DATE	REVISED	SCALE: _____			SHEET NO. 1 OF 1 SHEETS	STA. _____ TO STA. _____	ILLINOIS			

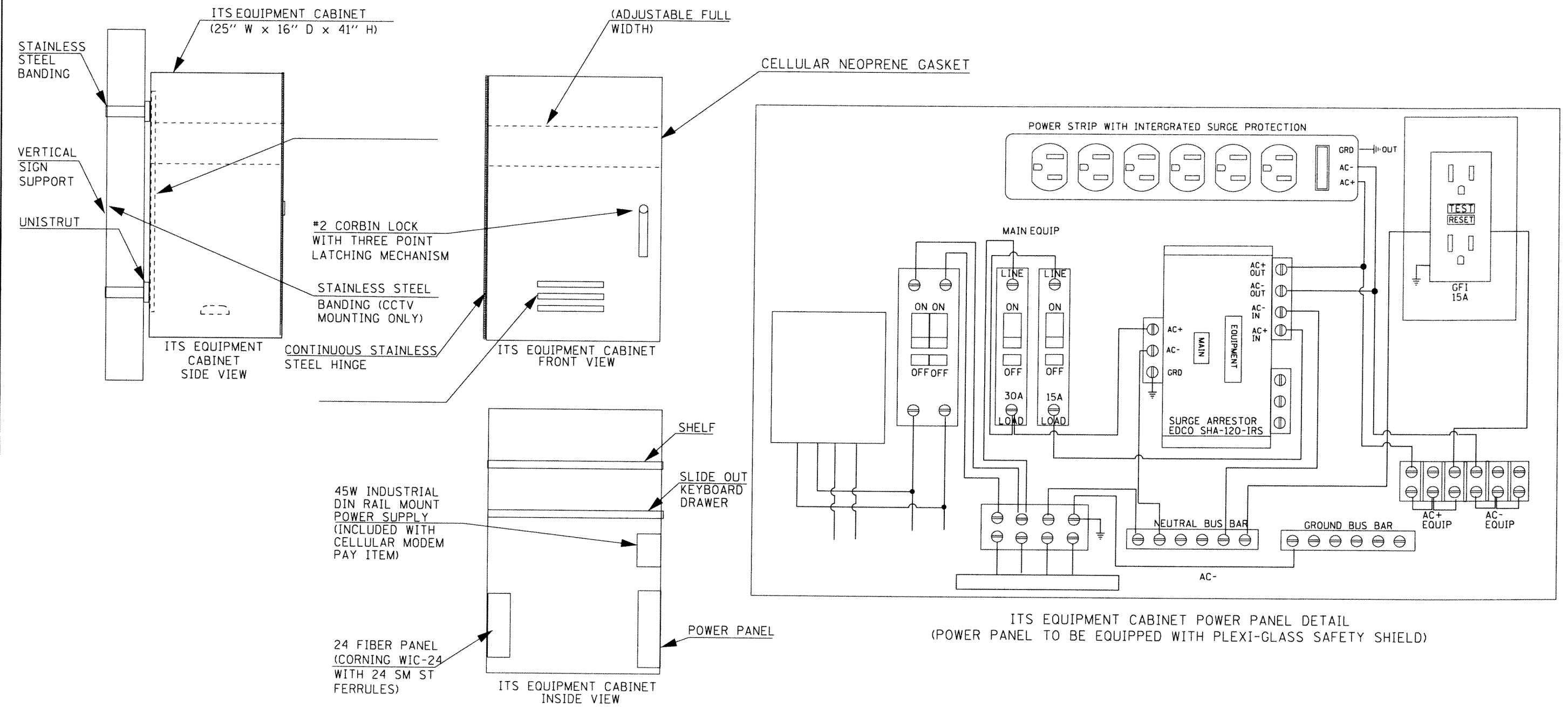
SUMMARY OF QUANTITIES

FAI 74/80/88 (I-74/80/88)
SECTION D2 DMS 2015-1
Henry & Rock Island
CONTRACT # 64K76
SHEET OF
100% State
0021

CODE NO.	ITEM	UNIT	TOTAL QUANTITY	HENRY CO.	ROCK ISLAND CO.
67100100	MOBILIZATION	L SUM	1.0	0.5	0.5
70100205	TRAFFIC CONTROL AND PROTECTION, STANDARD 701401	EACH	3.0	1.5	1.5
70100700	TRAFFIC CONTROL AND PROTECTION, STANDARD 701406	L SUM	1	0.5	0.5
X0323920	POLE MOUNTED EQUIPMENT CABINET, TYPE B	EACH	3	2	1
X0325482	REMOVE EXISTING ITS EQUIPMENT	EACH	3	2	1
X0325485	TRUSS MOUNTED LED DYNAMIC MESSAGE SIGN	EACH	3	2	1
X0325922	CELLULAR MODEM	EACH	3	2	1
X0326254	LAPTOP COMPUTER	EACH	1	0.5	0.5
X0326905	CLOSED-CIRCUIT TELEVISION DOME CAMERA, IP BASE	EACH	3	2	1
X7010410	SPEED DISPLAY TRAILER	CAL MO	1	0.5	0.5

10

*SPECIALTY ITEM

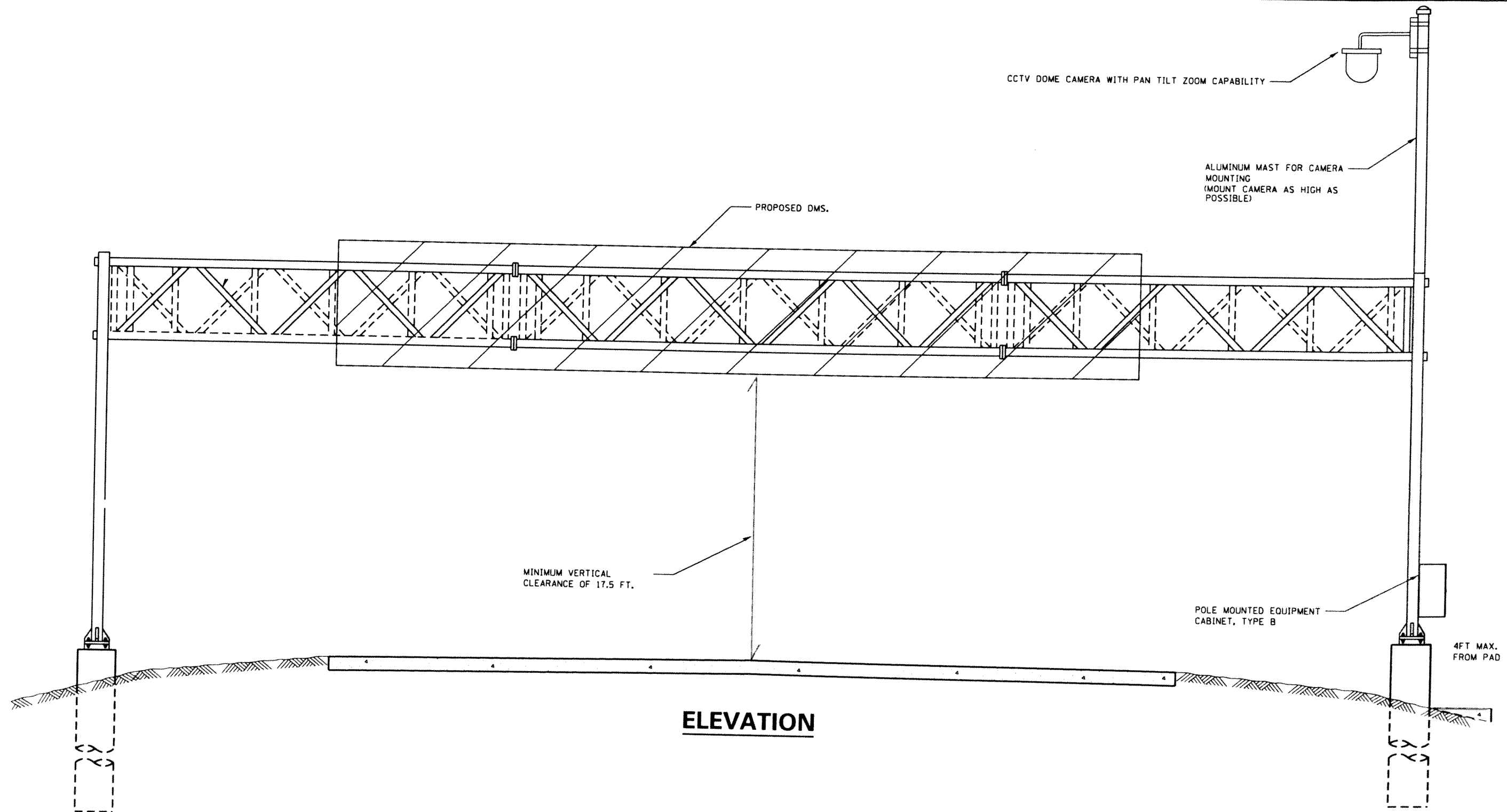


NOTES

1. THE ITS EQUIPMENT CABINET SHALL BE A NEMA TYPE 3R CABINET WITH MINIMUM OUTSIDE DIMENSIONS OF 41" (H) X 25" (W) X 16" (D). THE CABINET SHALL BE CONSTRUCTED FROM .125" THICK ALUMINUM AND HAVE A NATURAL FINISH.
2. THE CABINET SHALL BE FURNISHED WITH ONE ADJUSTABLE HEIGHT SHELF, THREE POSITION DOOR STOP (90, 120, 180 DEGREES), NEOPRENE DOOR GASKET, AIR VENT LOUVERS, CONTINUOUS STAINLESS STEEL DOOR HINGE, INTERIOR STIFFENERS FOR MOUNTING, THREE POINT LATCHING MECHANISM WITH #2 CORBIN LOCK, 24 FIBER INTERCONNECT CENTER, POWER PANEL, AND ALL STAINLESS STEEL HARDWARE.
3. THE CABINET SHALL BE EQUIPPED WITH A THERMOSTATICALLY CONTROLLED VENTILATION FAN, 250 WATT HEATER STRIP (WITH GUARD), AND DELUXE PLEATED AIR FILTER.
4. THE CABINET SHALL BE EQUIPPED WITH A SLIDE OUT KEYBOARD TRAY WITH INTEGRATED DOCUMENT STORAGE DRAWER.
5. THE CONTRACTOR SHALL INSTALL ALL DIN RAIL MOUNTED EQUIPMENT IN THE CABINET.
6. THE CONTRACTOR SHALL INSTALL A 48" X 48" CONCRETE STAND PAD AT EACH CABINET LOCATION. THE COST OF THE STANDPAD SHALL BE INCLUDED IN THE COST OF THE CABINET.

ITS EQUIPMENT CABINET POWER PANEL DETAIL
(POWER PANEL TO BE EQUIPPED WITH PLEXI-GLASS SAFETY SHIELD)

FILE NAME *	USER NAME * rufeldtj	DESIGNED -	REVISED -	STATE OF ILLINOIS DEPARTMENT OF TRANSPORTATION	POLE MOUNTED EQUIPMENT CABINET, TYPE B DETAIL	F.A.I. RTE.	SECTION	COUNTY	TOTAL SHEETS	SHEET NO.	
SH:\Justin\QMS Signs\0366828-shd-details.DGN		DRAWN -	REVISED -			VAR	D2 DMS 2015-1	VAR	6	4	
PLOT SCALE * 1/8" = 1' / in.		CHECKED -	REVISED -			SCALE: _____ SHEET NO. 1 OF 1 SHEETS STA. _____ TO STA. _____					
PLOT DATE * Mar-27-2015 8:29:15 AM		DATE -	REVISED -			ILLINOIS CONTRACT NO. 64K76					



ELEVATION

CCTV CAMERA PLACEMENT (TYP.)
OVERHEAD SIGN STRUCTURES (TYP.)

NOTES:

* THE CONTRACTOR SHALL SUBMIT COMPLETE MOUNTING METHOD DESIGN DETAILS AND CALCULATIONS SEALED BY AN ILLINOIS LICENSED STRUCTURAL ENGINEER TO THE RESIDENT ENGINEER FOR REVIEW AND APPROVAL PRIOR TO THE ORDERING OF ANY MATERIALS.

FILE NAME : C:\Users\muskfeldt\OneDrive\Documents\64K76-1\64K76-1.dwg	USER NAME : muskfeldt	DESIGNED : -	REVISED : -	STATE OF ILLINOIS DEPARTMENT OF TRANSPORTATION	PROPOSED DMS AND CCTV CAMERA DETAIL FOR OVERHEAD SIGN STRUCTURE	F.A.I. RTE. VAR	SECTION 02 DMS 2015-1	COUNTY VAR	TOTAL SHEETS 6	SHEET NO. 5		
PLOT SCALE : 1/8" = 1'-0"	PLOT DATE : Mar-24-2015 11:25:57 AM	DRAWN : -	REVISED : -			SCALE:	SHEET NO. 1 OF 1 SHEETS	STA. _____ TO STA. _____	CONTRACT NO. 64K76			
CHECKED : -	DATE : -	REVISED : -	REVISED : -			ILLINOIS						

ALUMINUM POLE CAP

CCTV CAMERA

4-1/2" DIAMETER SCHEDULE 80 ALUMINUM POLE, 20 FT. LENGTH (INSTALLED VERTICAL AND PLUMB)

ADJUSTABLE MAST ARM CLAMP
COMPONENT PRODUCTS, INC.
CPI-MAB-1070 (8"-10" DIAMETER)
CPI-MAB-1071 (12"-14" DIAMETER)
OR APPROVED EQUAL

THE CONTRACTOR SHALL BE RESPONSIBLE FOR VERIFYING THAT THE CAMERA MAST COMPONENTS FIT CORRECTLY AND ARE COMPATIBLE WITH THE SIGN STRUCTURE. THE CAMERA MAST DESIGN, THE COST OF FURNISHING AND INSTALLING THE CAMERA MAST SHALL BE INCLUDED IN THE COST OF THE CCTV CAMERA.

THE CONTRACTOR SHALL FURNISH AND INSTALL ALL GALVANIZED STEEL UNISTRUT, BRACKETING AND HARDWARE REQUIRED FOR CABINET INSTALLATION ONTO THE SIGN STRUCTURE VERTICAL SUPPORTS. THE CONTRACTOR SHALL SUBMIT CATALOG CUT SHEETS FOR ALL MATERIALS AND DETAIL DRAWINGS FOR PROPOSED MOUNTING METHODS PRIOR TO COMMENCING WORK. ALL MATERIAL SHALL BE APPROVED BY THE ENGINEER PRIOR TO INSTALLATION. THE COST OF THIS WORK SHALL BE INCLUDED IN THE COST OF THE EQUIPMENT CABINET.

1-5#8" X 1 5/8" 12 GA. GALVANIZED STEEL UNISTRUT (ALL CUT ENDS TO BE COLD-GALVANIZED)

STAINLESS STEEL BANDING AND BUCKLE (TYPICAL)

ALUMINUM POLE CAP

.75" DIA. HOLE WITH GROMMET AND PIPE NIPPLES AND NON METALLIC SEAL-TITE (TYP.)

2" DIA. GALVANIZED STEEL CONDUIT

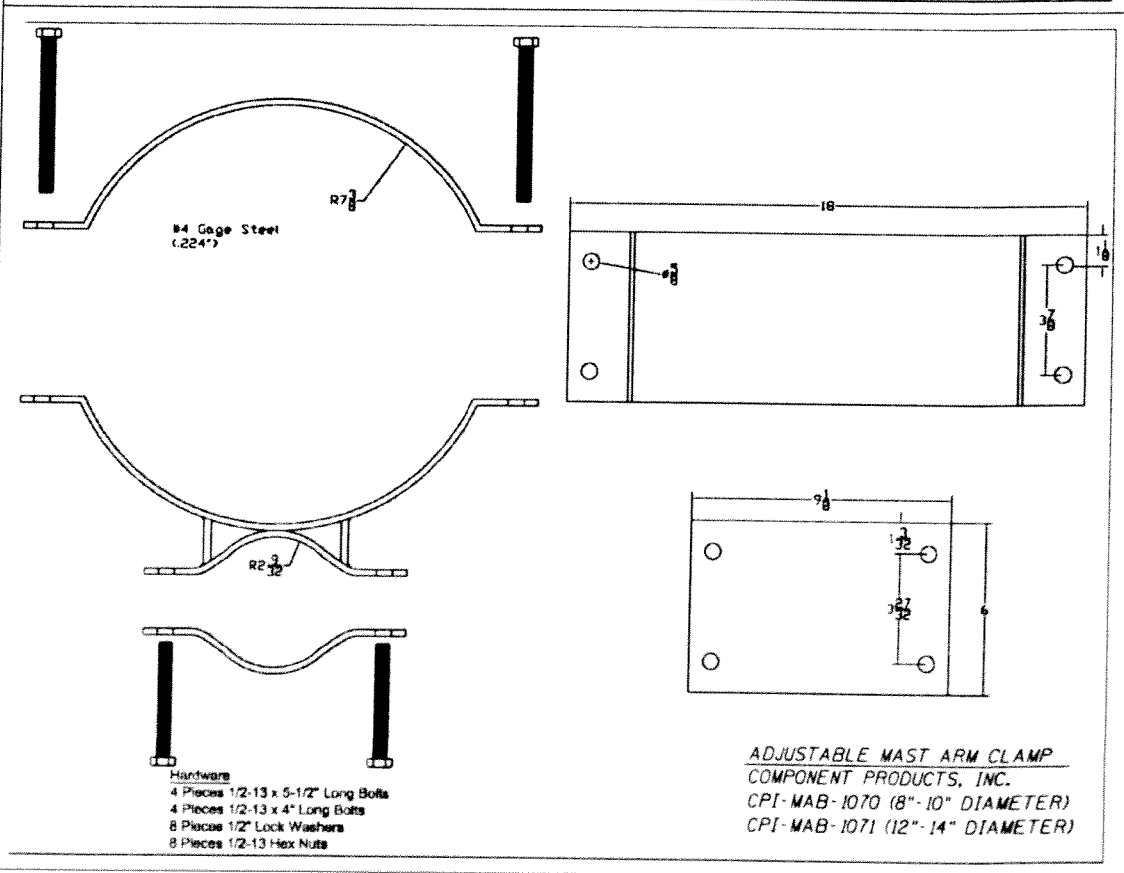
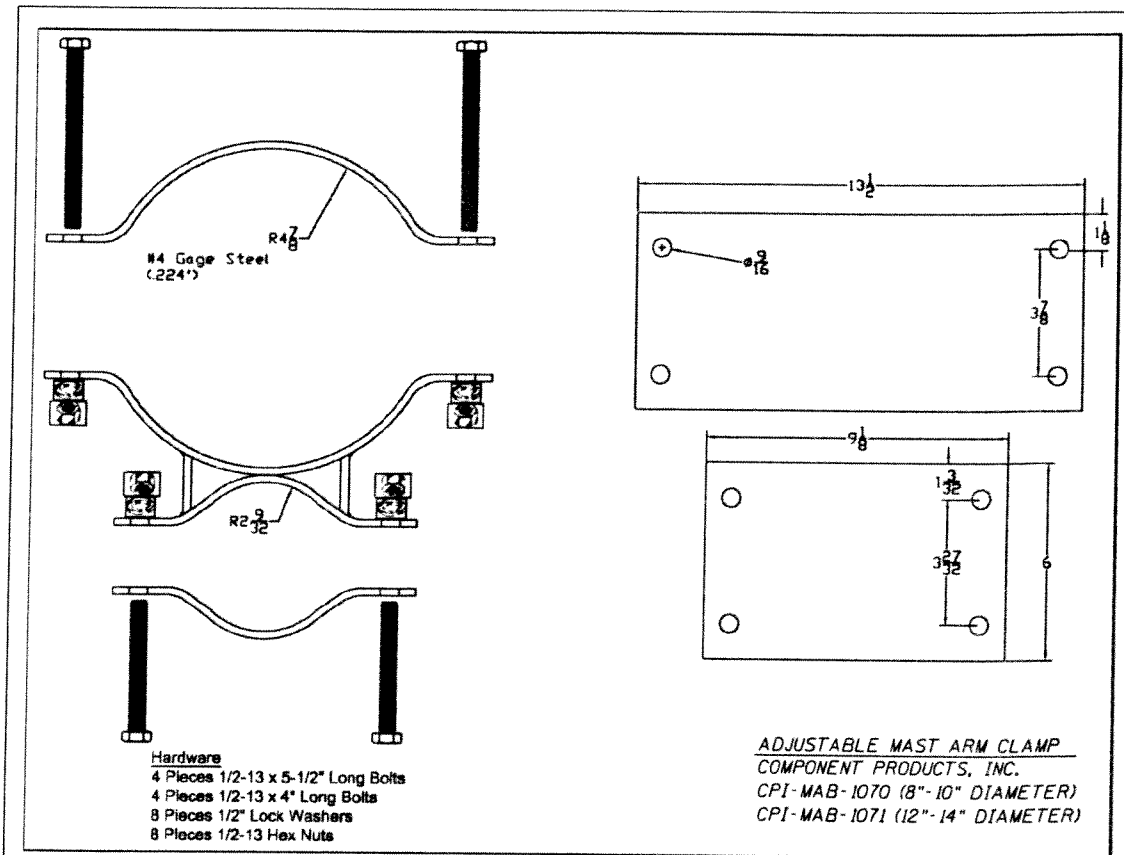
2" DIA. NPT THREADED HUB (COST INCLUDED WITH STRUCTURE) (LOCATION TO BE DETERMINED AT TIME OF SHOP DRAWING SUBMITTAL AND REVIEW)

9'-0"

1'-3"

2'-0"

SIDE ELEVATION



FILE NAME: C:\Users\trusfeldtj\Desktop\DMS_Signs\036828_sht-detail.dgn	USER NAME: trusfeldtj	DESIGNED: -	REVISED: -
PLOT SCALE: 1/8" = 1'-0"	CHECKED: -	DRAWN: -	REVISED: -
PLOT DATE: Feb-23-2015 08:51:18 PM	DATE: -	CHECKED: -	REVISED: -

STATE OF ILLINOIS
DEPARTMENT OF TRANSPORTATION

CCTV CAMERA AND EQUIPMENT CABINET MOUNTING DETAIL
FOR OVERHEAD SIGN STRUCTURES

SCALE: SHEET NO. X OF X SHEETS STA. TO STA.

F.A.I. RTE.	SECTION	COUNTY	TOTAL SHEETS	SHEET NO.
VAR	D2 DMS 2015-1	VAR	6	6
CONTRACT NO. 64K76				

ILLINOIS